

## Product datasheet for **RC215421**

### PHACTR2 (NM\_014721) Human Tagged ORF Clone

#### Product data:

Product Type:	Expression Plasmids
Product Name:	PHACTR2 (NM_014721) Human Tagged ORF Clone
Tag:	Myc-DDK
Symbol:	PHACTR2
Synonyms:	C6orf56
Mammalian Cell Selection:	Neomycin
Vector:	pCMV6-Entry (PS100001)
E. coli Selection:	Kanamycin (25 ug/mL)



[View online »](#)

**ORF Nucleotide Sequence:**

>RC215421 representing NM\_014721  
 Red=Cloning site Blue=ORF Green=Tags(s)

TTTTGTAATACGACTCACTATAGGGCGGCCGGAATTCGTCGACTGGATCCGGTACCGAGGAGATCTGCC  
 GCC**CGGATCGCC**

ATGGACAACGCCGTTGACGGACTGGACAAAGCTTCTATAGCAAACCTCAGATGGCCCCACAGCAGGTTCCC  
 AAACACCTCCCTTCAAAAGAAAGGGGAAACTATCCACCATTGGTAAAATCTTTAAGCCTTGAAATGGAG  
 GAAAAAGAAGACCAGCGACAAATTTAGAGAAACCTCGGCAGTATTAGAAAAGGAAGATATCCACACGACAA  
 AGTAGAGAGGAGCTGATAAGAAGGGGAGTGCTTAAGGAATTGCCTGATCAAGATGGAGATGTAACAGTTA  
 ACTTTGAAAATTCAAACGGGCACATGATACCCATCGGAGAGGAATCTACCCGAGAGGAAAATGTAGTAAA  
 GTCTGAAGAAGGTAATGGCTCTGTATCTGAAAAAACACCACCTCTGGAGGAACAGGCAGAAGATAAGAAA  
 GAGAACTGAAAACCACTCTGAAACACCGGCAGCTCCTGCTCTACCTCCTTCTGCTCCTCTAAGCCTA  
 GACCCAAACCTAAACCCAAAAAATCACCTGTGCCTCCGAAAGGGGCCACTGCTGGGGCCAGCCACAAAGG  
 TGATGAAGTGCCTCCATTAAAAAAAATACCAAGGCTCCTGGTAAAGCAGGCCCCCTCCCTCCACCAAG  
 CCAGCAAGCCGAAACACGACCCGAGAGGCTGCTGGCTCCTCTATTCAAAAAAAACAACCTGGCTCTAAAG  
 CATCAGCTTCGCCATCCACTTATCCACCTCATCTCGTCCCAAAGCTTCAAGGAGACAGTTTCTAGCAA  
 AGCAGGGACAGTGGGGACCACCAAGGGCAAGAGAAAACTGACAAGCAGCCAATAACTTCTCACCTGTCC  
 TCAGACACAACAATTCTGGCACATCCGACCTGAAAGGAGAGCCTGCAGAGACCAGAGTGGAGAGTTTCA  
 AACTCGAACAGACTGTCCCTGGAGCTGAGGAGCAGAACACAGGCAAAATCAAGTCCATGGTCCCTCCACC  
 CCCTGTGGCTCCAGCACCTTCTCCTCTGGCCCCCCTCTCCCTCTTGAGGATCAGTGCATTACTGCCTCA  
 GACACTCCAGTTGCTCCTCGTCAGCGTTGGAGCTGACCTGCCGCTCTGCCTTAGACCCAAGTCAGCTTC  
 TTTGGGCTGAAGAGCCGACGAACAGAACCACTCTACTCAGGCACTGGCTTAAGTGTTAACAGAGAAAA  
 TGCAAAATGTTTCAACCAAAGAGGAGCTGGGAAGACAGTGCCTCAGTACTGACTCCTGGGCTGATG  
 GGCGAATCTTCAGAATCCTTTAGTGCCTCAGAAGATGAAGGCCACAGGAATACCAAGCCAATGACTCTG  
 ACTCGGACGGGCTATCTGTACACCGATGATGAGGACGAAGACGAAGATGAGGATGGCAGTGGAGAAAAG  
 TGCTTTGGCAAGTAAAATACGCCGGAGGGATACTTGTCTATCAAACCTTGGAACAGACCATCTAAGAAA  
 GAACTAGAGGACAAAAACATCTTGACGCGTACATCTGAAGAAGAGAGGCAGGAAATCCGACAACAATTG  
 GAACCAAGTTAGTCAGGAGGCTGAGCCAGAGGCCACAACCTGAAGAATTAGAGCAAAGAAACATCCTAAA  
 AAAAAAGAAATGAAGAAGAGGAACAAGAAGCAAAAATGGAACCTAAACGCAGACTCAGCAGAAAGCTCAGC  
 CTGAGACCCACAGTGGCAGAGCTACAAGCTCGAAGGATCCTGCGATTTAACGAGTATGTAGAAGTCACGG  
 ATTCTCCTGACTATGACCGCCGAGCAGACAAGCCCTGGGCCAGGTTAACACCTGCAGACAAGGCAGCAAT  
 AAGGAAAGAACTAAATGAATTTAAAAGCACAGAAATGGAAGTTTATGAAGAGAGTCGACAGTTTACAAGG  
 TTTTCATCGTCCA

**ACGCGT**ACGCGGCCGCTCGAGCAGAAACTCATCTCAGAAGAGGATCTGGCAGCAAATGATATCCTGGATT  
 ACAAGGATGACGACGATAAGGTTTAA

Protein Sequence: >RC215421 representing NM\_014721  
 Red=Cloning site Green=Tags(s)

MDNAVDGLDKASIANSDGPTAGSQTTPPFKRKGLSTIGKIFKPWKWRKKKTSDFRETSAVLERKISTRQ  
 SREELIRRGVLKELPDQGDVTVNFENSGHMIPIGEESTREENVVKSEENGNSVSEKTPPLEEQAEKDK  
 ENTENHSETPAAPALPPSAPPKPRPKPKKSPVPPKGATAGASHKGDEVPIKKNKAPGKQAPVPPPK  
 PASRNTTREAAGSSHKTTGSKASASPSTSSSTRPKASKETVSSKAGTVGTTKGRKTDKQIPITSHLS  
 SDTTTSGTSDLKGPAETRVESFLEQTVPGAEEQNTGKFKSMVPPPVAPAPSPPLAPLPLEDQCITAS  
 DTPVVLVSVGADLPVSALDPSQLLWAEPTNRRTLYSGTGLSVNRENAKCFTTKEELGKTVPQLLTPGLM  
 GESSSEFSASEDEGHREYQANDSDSDGPILYTDDDEDEDEDGSGESALASKIRRRDTLAIKLGNRPSKK  
 ELEDKNILQRTSEERQEIQQIGTKLVRLSQRPTTEELQRNLIKQKNEEEQEAKMELKRRLSRKLS  
 LRPTVAELQARRILRFNEYVEVTDSPDYDRRADKPWARLTPADKAAIRKELNEFKSTEMEVHEESRQFTR  
 FHRP

TRTRPLEQKLISEEDLAANDILDYKDDDDKV

Chromatograms: [https://cdn.origene.com/chromatograms/mk8070\\_g01.zip](https://cdn.origene.com/chromatograms/mk8070_g01.zip)

Restriction Sites: SgfI-MluI

Cloning Scheme:



ACCN: NM\_014721

ORF Size: 1902 bp

OTI Disclaimer: The molecular sequence of this clone aligns with the gene accession number as a point of reference only. However, individual transcript sequences of the same gene can differ through naturally occurring variations (e.g. polymorphisms), each with its own valid existence. This clone is substantially in agreement with the reference, but a complete review of all prevailing variants is recommended prior to use. [More info](#)

OTI Annotation: This clone was engineered to express the complete ORF with an expression tag. Expression varies depending on the nature of the gene.

Components: The ORF clone is ion-exchange column purified and shipped in a 2D barcoded Matrix tube containing 10ug of transfection-ready, dried plasmid DNA (reconstitute with 100 ul of water).

- Reconstitution Method:**
1. Centrifuge at 5,000xg for 5min.
  2. Carefully open the tube and add 100ul of sterile water to dissolve the DNA.
  3. Close the tube and incubate for 10 minutes at room temperature.
  4. Briefly vortex the tube and then do a quick spin (less than 5000xg) to concentrate the liquid at the bottom.
  5. Store the suspended plasmid at -20°C. The DNA is stable for at least one year from date of shipping when stored at -20°C.

**RefSeq:** [NM\\_014721.3](#)

**RefSeq Size:** 4318 bp

**RefSeq ORF:** 1905 bp

**Locus ID:** 9749

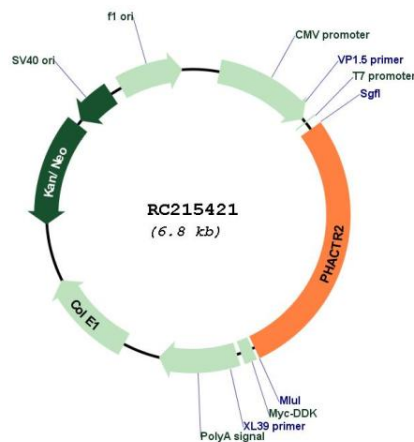
**UniProt ID:** [O75167](#)

**Cytogenetics:** 6q24.2

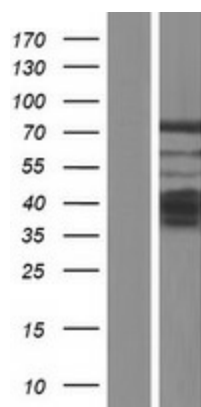
**Domains:** RPEL

**MW:** 69.5 kDa

**Product images:**



Circular map for RC215421



Western blot validation of overexpression lysate (Cat# [LY415095]) using anti-DDK antibody (Cat# [TA50011-100]). Left: Cell lysates from untransfected HEK293T cells; Right: Cell lysates from HEK293T cells transfected with RC215421 using transfection reagent MegaTran 2.0 (Cat# [TT210002]).