

Product datasheet for RC215419

MAST1 (NM_014975) Human Tagged ORF Clone

Product data:

Product Type:	Expression Plasmids
Product Name:	MAST1 (NM_014975) Human Tagged ORF Clone
Tag:	Myc-DDK
Symbol:	MAST1
Synonyms:	MCCCHCM; SAST
Mammalian Cell Selection:	Neomycin
Vector:	pCMV6-Entry (PS100001)
E. coli Selection:	Kanamycin (25 ug/mL)
ORF Nucleotide Sequence:	>RC215419 representing NM_014975 Red=Cloning site Blue=ORF Green=Tags(s)

TTTTGTAATACGACTCACTATAGGGCGGCCGGAATTCGTCGACTGGATCCGGTACCGAGGAGATCTGCC
GCC**CGATCGCC**

ATGTCTGACTCTCTGGACCGCCTTTCTAATTTCTCGATGCCCTCCTCCCGCGGCAGTATGTTCC
GCCGCACCAAGAGCTGCCGACCCAGTAATCGGAAAAGCCTCATCCTGACCAGCACTTCAACCACGCTACC
GAGACCCCACTCCCGCTGCCAGGTCACCTAGGCAGCAGTCCCCTGGACAGCCCCGAAACTTCTCCCC
AACACCCCGCCCACTTCTCGTTTGCCTCTCCGAAGGGCGGACGGACCGGTGGTCTCTGGCCTCGC
TCCCTTATCTGGCTATGGCACAACACGCCAGTTCCACCGTCTCGTCTCTGCTCTCCAGGAGCG
CCTTACCAGCTGCCCTACCAGCCACGGTGGACGAGCTCCACTTCTCTCCAAACACTTCGGGAGCACC
GAGAGCATCACAGACGAGGATGGTGGCCGTCGCTCCCCAGCCGTGCGGCCCGCTCACGGAGCCTAGCC
CCGGGCGCTCCCTCTCTCTACGACAACGAGATCGTGATGATGAATCACGTCTACAAGGAGAGGTTCCC
GAAGGCCACTGCGCAGATGGAGGAGAAGCTGCGCGACTTACCCGCGCCTACGAACCCGACAGCGTTCTG
CCTCTGGCCGATGGCGTGCTCAGCTTATCCACCACAGATCATCGAGCTGGCCCGGACTGCCTGACCA
AGTCCCGTGACGGCCTCATCACACGGTCTACTTCTATGAATTGCAGGAGAACCTGGAGAAGCTCCTTCA
AGACGCCTATGAACGCTCTGAGAGCTTGGAGGTGGCCTCGTTACTCAGCTGGTGAAGAAGTTGCTTATT
ATCATCTACGCCCTGCGAGGCTGCTGGAGTGCCTGGAATTCAACCCGAGGAGTTTACCACCTGCTGG
AGGCGGCCGAAGGACACGCCAAGGAGGGCCACCTTGTGAAGACGGACATCCCCCGCTACATCATCCGCCA
GCTGGGCCTCACCCGTGACCCCTTTCCAGACGTGGTGCATCTGGAGGAACAGGACAGTGGTGGTTCCAAC
ACCCCTGAGCAAGACGATCTCTCTGAGGGCCGACGAGCAAGGCCAAGAAACCGCCGGGGAGAATGACT
TCGATACCATCAAGCTCATAAGCAACGGTGCCTACGGCGCTGTCTACCTGGTGGCGCACCCGACACGCG
GCAGCGCTTTGCCATGAAAAAGATCAACAAGCAGAAGTTGATCCTCCGCAACCAGATCCAGCAGGCTTT
GTGGAGCGGATATCCTCACCTTCGCCGAGAACCCTTTGTGGTGGCATGTTCTGCTCCTTTGAGACTC
GGCGCCACCTCTGCATGGTTCATGAATATGTGGAAGGCGGCGACTGTGCCACCTGCTGAAGAATATTGG
AGCGCTGCCGTAGAGATGGCCCGCATGTACTTTGCTGAGACGGTCTAGCCCTGGAGTATTGCACAAC



[View online »](#)

TATGGCATCGTGACCCGCGACCTCAAGCCTGACAACCTCCTTATCACCTCCATGGGTCACATCAAGCTCA
 CAGATTTCCGGCTCTCCAAGATGGGGCTCATGAGCCTCACCACCACTTATATGAAGGCCACATCGAGAA
 GGACGCCCCGAGAGTTCTTGACAAAACAGGTGTGTGGGACCCAGAGTACATCGCGCCGAGGTATCCTG
 CGTCAAGGCTACGGCAAGCCAGTGGACTGGTGGGCTATGGGGATCATCCTCTACGAGTTCCTGGTGGGCT
 GTGTGCCCTTCTTCGGAGACACACCAGAGGAGCTATTTGGACAGGTATCAGTATGACATCCTGTGGCC
 CGAGGGGATGAGGCCCTACCTACGGAGGCCAACTCCTCATATCCAGCCTCTGCAGACCAACCTCTG
 GTCAGGTTGGGGCAGGGCGGCTTTTGGAGTGAAGCAGCACAGTTTCTTTCGAGACCTGGACTGGACAG
 GGCTGCTGAGGCAGAAGGCCGAGTTCATCCCCACCTAGAGTCGGAAGATGACACTAGCTACTTTGACAC
 CCGCTCAGACAGGTATCACCACGTGAACCTCTATGACGAGGATGACACGACGAGGAGGAGCCCGTGAA
 ATCCGCCAGTTCTCTTCTGCTCTCCGCGCTTACGAAGGTGTATAGCAGCATGGAGCAGCTGTCGACAGC
 ACGAGCCCAAGACCCAGTAGCAGCTGCAGGGAGCAGCAAGCGGGAGCCGAGCACCAAGGGCCCCGAGGA
 GAAGGTGGCCGGCAAGCGGGAGGGGCTGGGCGGCTGACCCTGCGTGAGAAGACCTGGAGAGGGGCTCT
 CCGGAGATCAAGCGATTCTCCGCGTCCGAGGCCAGTTTCTGGAGGGAGAGGCCAGTCCCCTTTGGGCG
 CCCGCCCGGTTTCTCGGCGTCTGGAGCCAGCCGCTTACGCGCCCCAAGAGGACGAGGATGAGGC
 CCGGCTGCGCAGGCTCCCCGGCCAGCTCCGACCCCGGGGATCCCTGGATGCACGGGCCCCAAAGAG
 GAGACTCAAGGGGAAGGCACCTCCAGCGCCGGGACTCCGAGGCCACTGACCGTCCACGCCAGGTGACC
 TCTGCCACCCTCGAAGGATGGGGATGCATCAGGCCCAAGGGCTACCAATGACTTGGTTCTGCGCCGGG
 GCGGCACCAGCAGATGTGAGGGATGTGGCAGTAGAGAAGAGGCCTTCTCGAACTGGGGGCAAAGTCATC
 AAATCAGCCTCAGCCACTGCCTTATCTGTATGATTCTCTGAGTGGACCCACATGGAAGTTCACCCCTTG
 CTAGTCCCATGTCTCCAGATCTCTGTCTCAACCCATCCTCACGGGACTCCTCACCCAGCCGGGACTA
 CTCACCAGCTGTGAGTGGGCTCCGCTCCCCATCACCATCCAGCGCTCGGGCAAGAAGTATGGTTCACA
 GTGCGTCCATCCGTGTCTACATGGGTGACACGGATGTCTATAGTGTCCACCACATTGTCTGGCATGTGG
 AGGAAGGAGGCCAGCCAGGAGGCAGGACTCTGTGCTGGGACCTCATCACCCAGTGAATGGGAGCC
 TGTGCATGGCATGGTGCATCCTGAGGTCGTGGAGCTGATCCTTAAGAGTGGCAACAAGGTAGCAGTGACC
 ACAACGCCCTTCGAAAATACCTCTATCCGATTGGTCCCAGGCGCAGCAGCTACAAGCTAAAATGG
 CTCGGAGGAACAAGCACCCTCCGCCAAGGAGGGCCAGGAGAGCAAGAAGCGCAGCTCCCTCTCCGGAA
 GATCACGAAGCAGTGAACCTGTGCATACTAGCCGCTCGCTGTGTCGCTGAACCGCTCGCTGTATCC
 AGCGATAGTCTCCGGGCTCGCTACGCACGGGCTGCCGGCGGCTCGCCACGCACAGCTACCGCTCCA
 CGCCTGACTCCGCTACCTAGGGCCTCATCCCAGAGCAGCTCCCAGCCTCGAGACGCCCAACTCGCC
 TGCGTGTGCGGCTCGCACCACATTCCGCCAGCAGCTGCACGGACTGTGCCAAAGCTCCATCGCCAG
 TACCGCTCTGCGGATGCAAGTCCGCCGCAACATCCCTCTATCGCCGCTGGCACACACGCGTCCCCCA
 CGCAGGGCTCACGCGCCACTGCCGGCCACACGGTGGGAGCTCGCACACTACTCAGAGCTTCCCGGC
 CAAACTGCACTCATCGCCTCCCGTGTGCGCCCGGCCCAAGAGTGCCGAGCCCCCTCGCTCGCCGCTC
 CTCAAGCGCGTGCAGTCCGCCGAGAAGCTGGGAGCCTCTTTGAGTGGGCAAGAAGGGCGCGTGGCGA
 AACACAGCCTCGAGGTGGGCCACCCGATTTCCGCAAGGACTTCCATGGCGAGCTGGCGTGCATAGCCT
 TGCCGAGTCCGACGGTGAAGCAGCCCAAGTTCGAGGGCCTTGGCGCGCCCGGAGGTGCGCGTCCGCCG
 CTGGGCCGACAGGAGTCACTTTGAGCCTGGGCGCGGACCCGTTGCTGCCGAGGGTGCCTCCAGGCCAC
 CAGTGTGAGCAAGGAGAAGGAATCCCCGGGGGCGCCGAGGCGTGCACCCACCCCGCGCAGCAGCCCC
 CGGTGGCCGACCCTGGAGCGGGACGTGCGCTGCACGCGCATCAGAGCGTGCAGACGGAGGATGGCCT
 GGCGGGATGGCCAGGGCTGTGGCCAAGGCGGCGCTGAGCCCGGTGCAAGAACACGAGACAGGCCGGCGCA
 GCAGCTCTGGCGAGGCGGGCACACCCTGGTACCCATTGTGCTAGAGCCTGCGCGGCCCGGGGCTAAGGC
 TGTGGTGCCTCAGCCTCTGGGCGCGACTCCAAGGGTTGCAGGAACCCGACCCCTGGCGCCTTCCGTG
 CCCGAGGCCCCCCGGGGCCGGGAGCGCTGGGTGTTGGAGGTGGTGGAGGAGCGCACACGCTGAGCGGT
 CTCGCTCAAGCCCGCTCCCCAAAGCTCTCCCCGAGCCCGAGACCCCTCCCTAGCCCCAGGAAAGTG
 CAGTGCACCCAGCAGTGCAGTACCCAGTCCCACCCGATCCCTTTGGGCTCGGGACCAAGCCTCAA
 GTGGGGCTGACCTCCCGGTGCCCTGCTGAAGCTGTGCCCCAGCAGGCCGACCAAAAAAGGAGTGTCCA
 GTCCCGCACCCCGGGACCA

ACGCGTACGCGGCCGCTCGAGCAGAACTCATCTCAGAAGAGGATCTGGCAGCAAATGATATCCTGGATT
 ACAAGGATGACGACGATAAGGTTTAA

Protein Sequence: >RC215419 representing NM_014975
 Red=Cloning site Green=Tags(s)

```

MSDSLWTALSNFSMPSPGGSMFRRTKSCRTSNRKSILITSTPTLPRPHSPLPGHLGSSPLDSPRNFSP
NTPAHFSFASSRRADGRRWLSASLPSSGYGTNTPSSTVSSSCSSQERLHQLPYQPTVDELHFLSKHFGST
ESITDEDGRRSPAVRPRSRSLSPGRSPSSYDNEIVMMNHVYKERFPKATAQMEEKLRDFTRAYEPDSVL
PLADGVLFSFIHHQIIEIARDCLTKSRDGLITTVYFYELQENLEKLLQDAYERSESLVAFVTQLVKLLLI
IISRPARLLECLEFNPEEFYHLLAAEGHAKGHLVKTDIPRYIIRQLGLTRDPFPDVVHLEEQDSGGSN
TPEQDDLSEGRSSKAKKPPGENDFDTIKLSNGAYGAVYLVHRDTRQRFAMKKINKQNLILRNQIQQAF
VERDILTFAENPFVGMFCSFETRRLCMVMEYVEGGDCATLLKNIGALPVEMARMYFAETVLALEYLHN
YGI VHRDLKPDNLLITSMGHKLTDFGLSKMGLMSLTNLYEGHIEKDAREFLDKQVCGTPEYIAPEVIL
RQGYGKPDVWAMGIILYEFVGCVPFFGDTPEELFGQVISDDILWPEGDEALPTEAQLLISLLQTNPL
VRLGAGGAFEVKQHSFRDLDTWGLLRQKAEFIPHLESDDTSYFDTRSDRYHHVNSYDEDDTTEEEPVE
IRQFSSCSPRFKVVYSSMEQLSQHEPKTPVAAAGSSKREPSTKGPEEKVAGKREGLGGLTLREKTWRGGS
PEIKRFSASEASFLEGEASPLGARRRFSALLEPSRFSAPQEDDEARLRPRPSSDPAGSLDARAPKE
ETQGEGETSSAGDSEATDRPRPGDLCPPSKDGDASGPRATNDLVLRARHQMSGDVAVEKRPSRTGGKVI
KSASATALSVMIPAVDPHGSSPLASPMSPRSLSSNPSSRDSSPSRDYSPAVSGLRSPITIQRSGKYGFT
LRAIRVYMGDTDVYVSHHIVVHVEEGGPAQEAGLCAGDLITHVNGEPVHGMVHPEVVELILKSGNKVAVT
TTPFENTSIRIGPARRSSYKAKMARRNKPSAKEGQESKRSRSLFRKITKQSNLLHTSRSLSSLNRSLS
SDSLPGSPTHGLPARSPHYSRSTPDSAYLGASSQSSSPASSTPNPASSASHHIRPSTLHGLSPKLHRQ
YRSARCKSAGNIPLSPLAHTPSTQASPPPLPGHTVGSSTHTQSFPAKLHSSPPVVRPRPKSAEPPRSPL
LKRVSQSAEKLASLSADKKGALRKHSLEVGHPDFRKFDFHGLALHSLAESDGETPPVEGLGAPRQVAVRR
LGRQESPLSLGADPLLPEGASRPPVSSKEKESPGGAEACTPPRATTPGGRTLERDVGCTRHQSVQTEDGT
GGMARAVAKAALSPVQEHETGRRSSSAGEAGTLPVIVVEPARPGAKAVVQPLGADSKGLQEPAPLAPS
PEAPRGRERWVLEVEERTTSGPRSKPASPKLSPEPQTPSLAPAKCSAPSSAVTPVPPASLLGSGTKPQ
VGLTSRCPAEAVPPAGLTKKGVSSPAPGP
  
```

TRTRPLEQKLISEEDLAANDILDYKDDDDKV

Chromatograms: https://cdn.origene.com/chromatograms/mk8009_b04.zip

Restriction Sites: SgfI-MluI

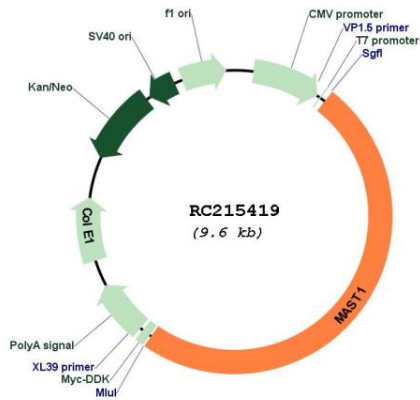
Cloning Scheme:



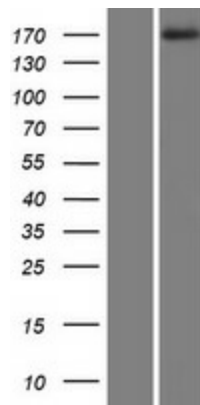
ACCN: NM_014975

ORF Size:	4710 bp
OTI Disclaimer:	The molecular sequence of this clone aligns with the gene accession number as a point of reference only. However, individual transcript sequences of the same gene can differ through naturally occurring variations (e.g. polymorphisms), each with its own valid existence. This clone is substantially in agreement with the reference, but a complete review of all prevailing variants is recommended prior to use. More info
OTI Annotation:	This clone was engineered to express the complete ORF with an expression tag. Expression varies depending on the nature of the gene.
Components:	The ORF clone is ion-exchange column purified and shipped in a 2D barcoded Matrix tube containing 10ug of transfection-ready, dried plasmid DNA (reconstitute with 100 ul of water).
Reconstitution Method:	<ol style="list-style-type: none">1. Centrifuge at 5,000xg for 5min.2. Carefully open the tube and add 100ul of sterile water to dissolve the DNA.3. Close the tube and incubate for 10 minutes at room temperature.4. Briefly vortex the tube and then do a quick spin (less than 5000xg) to concentrate the liquid at the bottom.5. Store the suspended plasmid at -20°C. The DNA is stable for at least one year from date of shipping when stored at -20°C.
RefSeq:	NM_014975.1 , NP_055790.1
RefSeq Size:	4833 bp
RefSeq ORF:	4713 bp
Locus ID:	22983
UniProt ID:	Q9Y2H9
Cytogenetics:	19p13.13
Protein Families:	Druggable Genome, Protein Kinase
MW:	170.5 kDa
Gene Summary:	This gene is a member of the microtubule-associated serine/threonine kinase (MAST) family. The protein encoded by this gene has an N-terminal serine/threonine kinase domain followed by a postsynaptic density protein-95/discs large/zona occludens-1 (PDZ) domain. In mouse and rat, the orthologous protein associates with the cytoskeleton and can bind both beta-2-syntrophin and neuronal nitric oxide synthase (nNOS) through its PDZ domain. In mouse and rat, this protein also co-localizes with dystrophin- and utrophin-associated protein complexes (DAPC/UAPC) in the vascular endothelium of the central nervous system. [provided by RefSeq, May 2017]

Product images:



Circular map for RC215419



Western blot validation of overexpression lysate (Cat# [LY414871]) using anti-DDK antibody (Cat# [TA50011-100]). Left: Cell lysates from untransfected HEK293T cells; Right: Cell lysates from HEK293T cells transfected with RC215419 using transfection reagent MegaTran 2.0 (Cat# [TT210002]).