

Product datasheet for RC215415

GTF2H2C (NM_001098728) Human Tagged ORF Clone

Product data:

Product Type: Expression Plasmids
Product Name: GTF2H2C (NM_001098728) Human Tagged ORF Clone
Tag: Myc-DDK
Symbol: GTF2H2C
Synonyms: GTF2H2C_2
Mammalian Cell Selection: Neomycin
Vector: pCMV6-Entry (PS100001)
E. coli Selection: Kanamycin (25 ug/mL)
ORF Nucleotide Sequence: >RC215415 representing NM_001098728
 Red=Cloning site Blue=ORF Green=Tags(s)

TTTTGTAATACGACTCACTATAGGGCGGCCGGAATTCGTCGACTGGATCCGGTACCGAGGAGATCTGCC
 GCC**CGATCGCC**

ATGGATGAAGAACCTGAAAGAATAAGCGATGGGAAGGAGGCTATGAAAGAACATGGGAGATTCTTAAAG
 AAGATGAATCTGGATCACTTAAAGCTACAATAGAAGACATTCTATTCAAGGCAAAGAGAAAAAGAGTATT
 TGAGCACCATGGACAAGTTCGACTTGAATGATGCGCCACCTTTATGTGGTAGTAGATGGATCAAGAACA
 ATGGAAGACCAAGATTTAAAGCCTAATAGACTGACGTGTACTTTAAAGTTGTTGGAATACTTTGTAGAGG
 AATATTTTATGATCAAAATCCTATTAGTCAGATTGGAATAATTGTAAGTAAAGAGCTGAAAAATT
 GACTGAACTTTCAGGAAACCAAGAAAACATATAACGTCTTTGAAGGAAGCTGTGGATATGACCTGCCAT
 GGAGAGCCATCTCTTTATAATTCCTAAGCATGGCTATGCAGACTCTAAAACACATGCCTGGACATACAA
 GTGCGAAGTACTAATCATCTTTAGCAGCCTTACAACCTGCGATCCATCTAATATTTATGATCTAATCAA
 GACCCTAAAGGCAGCTAAAATTAGAGTATCTGTTATTGGATTGTCTGCAGAAGTTCGCGTTTGCAGTGA
 CTTGCTCGTGAAGTGGTGGCAGTACCATGTTATTTAGATGAAAGCCATTACAAGAGTTGCTCACAC
 ATCATCTAGTCTCCTCTGCTAGCTCAAGTCTGAATGCTCACTTATTCGATGGGATTTCTCAGCA
 CACCATTGCTTTTATCTGACCAGGATGCAAAACCTCTTTGAGCATGGCGCATTGGATGGCAATACT
 GAGCCAGGGCTTACATTAGGAGGCTATTTCTGCCACAGTGTGGGCAAAGTACTGTGAGTACCTGTTG
 AATGTAATAATCTGTGGTCTTACTTTGGTGTCTGCTCCCACTGGCAGCGTCTTACCATCATTTGTTTCC
 TTTGGATGCTTTTCAAGAAATCCCTAGAGAATATAATGGAGAAGATTTTGTATGGATGTCAGGGG
 GAATTGAAAGACCAACATGTTTATGTTTGTGCTGTGTGCCAAAATGTTTCTGTGTGGAGTGTGATGTTT
 TTGTTATGATTCTACTACTGTTGCCCTGGCTGATTTCATAAGATTCCAGCTCTTCAGGTGTT

ACGCGTACGCGGCCGCTCGAGCAGAACTCATCTCAGAAGAGGATCTGGCAGCAATGATATCCTGGATT
 ACAAGGATGACGACGATAAGGTTTAA



[View online >](#)

Protein Sequence: >RC215415 representing NM_001098728
Red=Cloning site Green=Tags(s)

MDEEPERTKRWEGGYERTWEILKEDESGSLKATIEDILFKAKRKRVEFHGQVRLGMMRHLVYVVVDGSR
 MEDQDLKPNRLTCTLKLLLEYFVEEYFDQNPISQIGIIVTKSKRAEKLTELSGNPRKHITSLKEAVDMTC
 GEPSLYNSLSMAMQTLKHMPGHTSREVLIIFFSSLTTCDPNSNIYDLIKTLKAAKIRVSVIGLSAEVRVCTV
 LARETGGTYHVILDESHYKELLTHHLSPPPASSSSECSLIRMGFPQHTIASLSDQDAKPSFSMAHLDGNT
 EPLTLGGYFCPQCRAKYCELPVECKICGLTLVSAPHLARSYHHLFPLDAFQEIPLEEYNGERFCYGCQG
 ELKDQHYVYCAVCQNVFCVDCDVFVHDSLHCCPGCIHKIPAPSGV

TRTRPLEQKLISEEDLAANDILDYKDDDDKV

Chromatograms: https://cdn.origene.com/chromatograms/ja1291_e04.zip

Restriction Sites: SgfI-MluI

Cloning Scheme:



* The last codon before the Stop codon of the ORF

ACCN: NM_001098728

ORF Size: 1185 bp

OTI Disclaimer: The molecular sequence of this clone aligns with the gene accession number as a point of reference only. However, individual transcript sequences of the same gene can differ through naturally occurring variations (e.g. polymorphisms), each with its own valid existence. This clone is substantially in agreement with the reference, but a complete review of all prevailing variants is recommended prior to use. [More info](#)

OTI Annotation: This clone was engineered to express the complete ORF with an expression tag. Expression varies depending on the nature of the gene.

Components: The ORF clone is ion-exchange column purified and shipped in a 2D barcoded Matrix tube containing 10ug of transfection-ready, dried plasmid DNA (reconstitute with 100 ul of water).

Reconstitution Method:

1. Centrifuge at 5,000xg for 5min.
2. Carefully open the tube and add 100ul of sterile water to dissolve the DNA.
3. Close the tube and incubate for 10 minutes at room temperature.
4. Briefly vortex the tube and then do a quick spin (less than 5000xg) to concentrate the liquid at the bottom.
5. Store the suspended plasmid at -20°C. The DNA is stable for at least one year from date of shipping when stored at -20°C.

RefSeq: [NM_001098728.3](#)

RefSeq Size: 2106 bp

RefSeq ORF: 1188 bp

Locus ID: 728340

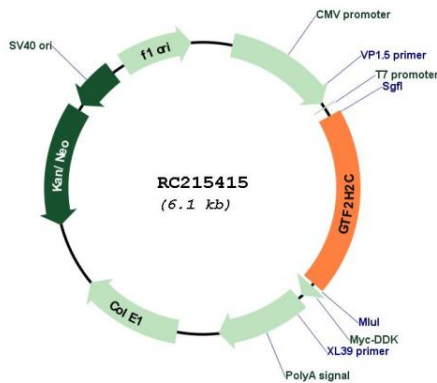
UniProt ID: [Q6P1K8](#)

Cytogenetics: 5q13.2

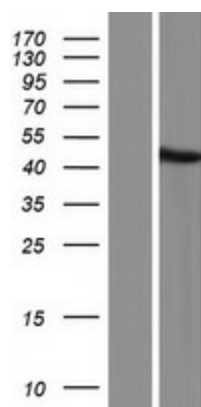
Protein Families: Druggable Genome

MW: 44.3 kDa

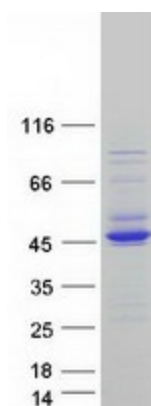
Product images:



Circular map for RC215415



Western blot validation of overexpression lysate (Cat# [LY420670]) using anti-DDK antibody (Cat# [TA50011-100]). Left: Cell lysates from untransfected HEK293T cells; Right: Cell lysates from HEK293T cells transfected with RC215415 using transfection reagent MegaTran 2.0 (Cat# [TT210002]).



Coomassie blue staining of purified GTF2H2C protein (Cat# [TP315415]). The protein was produced from HEK293T cells transfected with GTF2H2C cDNA clone (Cat# RC215415) using MegaTran 2.0 (Cat# [TT210002]).