

Product datasheet for **RC215414**

TMPPE (NM_001039770) Human Tagged ORF Clone

Product data:

| | |
|---------------------------|---|
| Product Type: | Expression Plasmids |
| Product Name: | TMPPE (NM_001039770) Human Tagged ORF Clone |
| Tag: | Myc-DDK |
| Symbol: | TMPPE |
| Mammalian Cell Selection: | Neomycin |
| Vector: | pCMV6-Entry (PS100001) |
| E. coli Selection: | Kanamycin (25 ug/mL) |



[View online »](#)

ORF Nucleotide
Sequence:

>RC215414 representing NM_001039770
Red=Cloning site Blue=ORF Green=Tags(s)

TTTTGTAATACGACTCACTATAGGGCGGCCGGAATTCGTCGACTGGATCCGGTACCGAGGAGATCTGCC
GCCGCGATCGCC

ATGGCCATCTTCAGGCAGCTGTCCCTAGGCGCGAAGGCCACCCTGGCTGCTGCTACTGTCTTCGTGTCCA
TGATCGCCTCCCCTCGTATCTGGCAGAGAGCCTTGAGCTCAGGGCCTGGCGTTGGCTGCTTCGCTTGCA
GCTTGCCCTGTTTGTCAACTCGCTCTTGCTCATTGGCTCCCTCTACATTTGGCGCAGCACAGTGAGCAAC
CTCTGCCACTCCCAGCTGCAGAGTCAACCTGTTTTAGCTTTGGAAGGTGGTGGTTCTGGCATTCTGG
CCCTGGCCATTCCAGTTTCTTTACCATGTTCTTTTTAGTGGCCGAAGAGCCCTATCTCTTTTCTTGGC
GGCCTACTCTGCCTGGGTGCTTACATCATCATGCTCTTCTTCTTCTCCTCCTCAGCGGCATGGAGCAG
GCCTACCAGCTCTGGCCTGGCGCAGTGGTAGGGTCGTGGGCAGCCTTGAGAAGACAAGGAAGCTCGTGC
TCAGGCCTGCCCTGGCAGTGGGAGTGACTGCTGTGCTCAGCGTGGCCGGGATTCTGAATGCCGCGCAGCC
CCCGGCTGTGAAAACGTGGAGGTGCCATCCATCAGCTGCCTCAATGAACAACCTCAAGATCGTG
CTCCTCTCAGACATTCACCTGGGCCCCACAGTGGGCAGGACCAAGATGGAATGTTTGTGAGGATGGTGA
ATGTGCTGGAACCAGACATCACGGTGATTGTGGGTGACCTCTCCGACTCAGAAGCCTCGGTCTGCGGAC
GGCTGTGCTCCTCTGGGCCAGCTTCATTACATCTCGGTGCCTACTTCGTACAGGCAATCATGAGTAC
TACACGTCAGATGTCAGCAACTGGTTTGCACCTTCTGGAATCCCTGCATGTCCAGCCTCTTCATAATGAGA
ACGTGAAGATTTCCGCCACACGGGCCAACGTGGTGGTGGTGGCAGTGGCAGTGGGAGTGAGGATGAGGA
CTGGATCGCTTGGCTGGGTGGACGATATTGAAGCAGACATCCTGCACTACTCTGGCCATGGCATGGAT
CTTGACAAGGCCCTGGAGGGCTGCAGCCAGACCACACAATCATCTTGTAGCTCACCAGCCCTGGCTG
CCAAGAGAGCTCTCCAGGCTCGGCCAGATTAACCTGATCCTTTCTGGGCACACACATGCTGGGCAGAT
CTTCCCCTTGAACGTAGCAGCCTATCTCCTGAATCCCTTCTTTGCTGGTCTCTACCAGGTGGCCAGGCT
ACATTCGTGTATGTCAGCCAGGCACAGCCTACTACGGGATACCCATGAGGCTGGGTAGCAGGGCCGAGA
TCACAGAGCTCATCTGCAGCGTCTCCC

ACGCGTACGCGGCCGCTCGAGCAGAACTCATCTCAGAAGAGGATCTGGCAGCAATGATATCCTGGATT
ACAAGGATGACGACGATAAGGTTTAA

Protein Sequence:

>RC215414 representing NM_001039770
Red=Cloning site Green=Tags(s)

MAIFRQLSLGAKATLAAVTVFVSMIASRSYLAESLELRWRLLRLQLALFVNSLLLIGSLYIWRSTVSN
LCHSPAAESTCFQLWKVVVLAFLALAHSSFFTMFFLVAEEPFLSLAAYSCLGAYIIMLFFLILSGMEQ
AYQLLAWRSRGRVGSLEKTRKLVLRPALAVGVTAVLSVAGILNAAQPPAVKTVEVPIHQLPASMNNLKIV
LLSDIHLGPTVGRKMEMFVRMNVLEPDITVIVGDLSDSEASVLRATAVPLGQLHSHLGAYFVTGNHEY
YTSVSNWFALLESLHVQPLHNENVKISATRAQRGGGSGSGSEDEDWICLAGVDDIEADILHYSHGMD
LDKALEGCPDHTIILLAHQPLAAKRALQARPDINLILSGHTHAGQIFPLNVAAYLLNPFAGLYQVAQA
TFVYVSPGTAYYGIPMRLGSRAEITELILQRSP

TRTRPLEQKLISEEDLAANDILDYKDDDDKV

Chromatograms:

https://cdn.origene.com/chromatograms/mk8005_a09.zip

Restriction Sites:

SgfI-MluI

Cloning Scheme:

Cloning sites used for ORF Shutting:



* The last codon before the Stop codon of the ORF

ACCN: NM_001039770

ORF Size: 1359 bp

OTI Disclaimer: The molecular sequence of this clone aligns with the gene accession number as a point of reference only. However, individual transcript sequences of the same gene can differ through naturally occurring variations (e.g. polymorphisms), each with its own valid existence. This clone is substantially in agreement with the reference, but a complete review of all prevailing variants is recommended prior to use. [More info](#)

OTI Annotation: This clone was engineered to express the complete ORF with an expression tag. Expression varies depending on the nature of the gene.

Components: The ORF clone is ion-exchange column purified and shipped in a 2D barcoded Matrix tube containing 10ug of transfection-ready, dried plasmid DNA (reconstitute with 100 ul of water).

Reconstitution Method:

1. Centrifuge at 5,000xg for 5min.
2. Carefully open the tube and add 100ul of sterile water to dissolve the DNA.
3. Close the tube and incubate for 10 minutes at room temperature.
4. Briefly vortex the tube and then do a quick spin (less than 5000xg) to concentrate the liquid at the bottom.
5. Store the suspended plasmid at -20°C. The DNA is stable for at least one year from date of shipping when stored at -20°C.

RefSeq: [NM_001039770.3](#)
RefSeq Size: 3962 bp

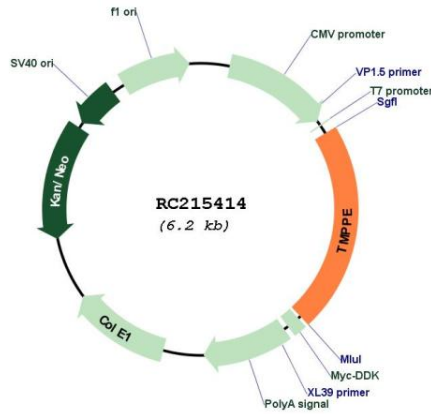
RefSeq ORF: 1362 bp

Locus ID: 643853

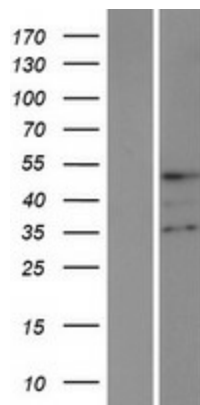
UniProt ID: [Q6ZT21](#)

Cytogenetics: 3p22.3
 Protein Families: Transmembrane
 MW: 49.3 kDa

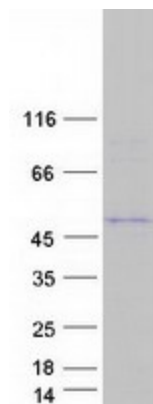
Product images:



Circular map for RC215414



Western blot validation of overexpression lysate (Cat# [LY421823]) using anti-DDK antibody (Cat# [TA50011-100]). Left: Cell lysates from untransfected HEK293T cells; Right: Cell lysates from HEK293T cells transfected with RC215414 using transfection reagent MegaTran 2.0 (Cat# [TT210002]).



Coomassie blue staining of purified TMPPE protein (Cat# [TP315414]). The protein was produced from HEK293T cells transfected with TMPPE cDNA clone (Cat# RC215414) using MegaTran 2.0 (Cat# [TT210002]).