

Product datasheet for **RC215402**

FUBP3 (NM_003934) Human Tagged ORF Clone

Product data:

Product Type:	Expression Plasmids
Product Name:	FUBP3 (NM_003934) Human Tagged ORF Clone
Tag:	Myc-DDK
Symbol:	FUBP3
Synonyms:	FBP3
Mammalian Cell Selection:	Neomycin
Vector:	pCMV6-Entry (PS100001)
E. coli Selection:	Kanamycin (25 ug/mL)



[View online »](#)

ORF Nucleotide Sequence:

>RC215402 representing NM_003934
 Red=Cloning site Blue=ORF Green=Tags(s)

TTTTGTAATACGACTCACTATAGGGCGGCCGGAATTCGTCGACTGGATCCGGTACCGAGGAGATCTGCC
 GCC**CGCATCGCC**

ATGGCGGAGCTGGTGCAGGGGCAGAGCGCTCCTGTGGGATGAAGCCGAGGGCTTCGTGGATGCCCTGC
 ACCGGGTCGGCAGATTGCTGCTAAAATTGATTCAATTCCTCACTTGAATAATTCCACACCTCTAGTGGA
 CCCCTCAGTATATGGATACGGAGTACAAAAACGGCCCTTGGATGATGGAGTAGGTAAACCAGTTAGGGGCC
 TTGGTACATCAAAGGACGGTAATAACGGAAGAATTCAAAGTGCCTGACAAAATGGTTGGATTATTATCG
 GCAGGGGAGGTGAGCAGATTTACGGATTCAAGCAGAATCTGGTTGAAAATTCAGATTGCTTCAGAGAG
 TTCTGGGATTCCAGAGAGGCCCTGTGTACTTACCGAACCCAGAAAATTGAACAAGCCAAACGGCTC
 CTGGGACAGATTGTGGACCGCTGTGAAATGGACCTGGCTTTCATAATGACATAGACAGCAACAGCACAA
 TCCAGGAGATTCTATTCCGCATCTAAAGTGGGTCTGGTCATCGGCAGAGGAGGGGAAACAATCAAGCA
 GTTGCAGGAGCGGACAGGGGTGAAGATGGTCATGATCCAGGATGGCCATTGCCACGGGAGCAGACAAG
 CCTCTTCGTATCACTGGAGATGCATTTAAAGTACAGCAAGCAAGAAAATGGTACTAGAGATTATCCGAG
 AAAAAGACCAAGCTGACTTTTCGGGGTGTACGCGCGGATTTCAACTCTCGAATGGGAGGAGGCAGTATAGA
 GGTATCTGTGCCTAGGTTTGTGTGGGGATTGTAATAGGAAGAAACGGGGAAATGATCAAAAAGATCCAG
 AATGATGCTGGTGTGAGGATTAGTTTAAACCAGATGATGGGATTAGTCCAGAAAAGAGCTGCCCAGGTCA
 TGGGCCCTCCGGATCGGTGTGAGCATGCAGCGCATATCATCAGCGAGCTGATTCTTACAGCCCAGGAAAAG
 AGACGGCTTTGGAGGCCGTGGCAGCAGCCAGAGGAAGAGGTCTGGCCGTGGCGACTGGAGCGTGGAGCC
 CCTGGTGGCGTCCAGGAGATAACATACACGGTCCAGCCGATAAGTGTGGCCTCGTCATAGGCAAAAGGGG
 GTGAGAACATCAAAGCATCAACCAGCAGTCAGGGGCGCACGTGGAGCTTCAGAGGAACCCCTCCCAA
 CAGCGACCCCAACCTGCGGAGATTCAACATCAGGGGGTTCCCCAGCAGATCGAGGTGGCCAGGCAGCTC
 ATAGATGAGAAAAGTTGGCGGGACCAATCTCGGAGCACCTGGAGCCTTCGGACAGAGTCCATTACAGCCAGC
 CACCTGCCCCACCTCATCAAAATACCTTCTCCAAGGAGCTCCGGGTGCTTCCCAAACATGGTGCCAA
 GGTGAATGGGAACCCCCACAGCACCCCTGTGAGTGGTCTCCGGCCTTTCTGACCAGGGCTGGGGCAGC
 ACCTACCAGGCGTGGCAGCAGCCACACAGCAGGTCCCAAGCCAGCAGAGCCAGCCGAGCAGCCAGC
 CCAACTACAGCAAGGCCGGGAAGACTATTACAAAAACAGAGTACGCCGCCAGCGCTGCTCCTCAGGC
 CAGCTCCCACCGACTACACAATGGCCTGGGCAGAATATTACAGACAGCAGGTCTGCTTCTACGGACAG
 ACGTTAGGGCAGGCGCAGGCCACAGCCAGGAGCAG

ACGCGTACGCGGCCGCTCGAGCAGAAACTCATCTCAGAAGAGGATCTGGCAGCAAATGATATCCTGGATT
 ACAAGGATGACGACGATAAGGTTTAA

Protein Sequence:

>RC215402 representing NM_003934
 Red=Cloning site Green=Tags(s)

MAELVQGSAPVGMKAEGFVDALHRVRQIAAKIDSIPHLNNSTPLVDPSVYGVQKRPLDDGVGNQLGA
 LVHQRTVITEEFKVPDKMVGFIIIGRGGEQISRIQAESGCKIQIASESSGIPERPCVLTGTPESIEQAKRL
 LGQIVDRCRNGPGFHNDIDSNSTIQEILIPASKVGLVIGRGGETIKQLQERTGVKMMIQDGPLPTGADK
 PLRITGDAFKVQQAREMVLEIIREKDQADFRGVRGDFNSRMGGGSI EVSVPRFAVGIVIGRNGEMIKKIQ
 NDAGVRIQFKPDDGISPERAAQVMGPPDRCQHAHII SELILTAQERDFGGLAAARGRGRGRGDWSVGA
 PGGVQEITYTVPADKCLVIGKGGENIKSINQQSGAHVELQRNPPNSDPNLRRTIRGVPQQIEVARQL
 IDEKVGGTNLGAPGAFGQSPFSQPPAPPHQNTFPPRSSGCFPNMAAKVNGNPHSTPVSPPAFLTQGWGS
 TYQAWQPTQVPSQQSQPSSQPNYSKAWEDYKKQSHAASAAPQASSPPDYTMAWAEYYRQVAFYQG
 TLGQAQHSSEQ

TRTRPLEQKLISEEDLAANDILDYKDDDDKV

Chromatograms:

https://cdn.origene.com/chromatograms/ja1406_h04.zip

Restriction Sites:

Sgfl-Mlul

Cloning Scheme:


ACCN: NM_003934

ORF Size: 1716 bp

OTI Disclaimer: The molecular sequence of this clone aligns with the gene accession number as a point of reference only. However, individual transcript sequences of the same gene can differ through naturally occurring variations (e.g. polymorphisms), each with its own valid existence. This clone is substantially in agreement with the reference, but a complete review of all prevailing variants is recommended prior to use. [More info](#)

OTI Annotation: This clone was engineered to express the complete ORF with an expression tag. Expression varies depending on the nature of the gene.

Components: The ORF clone is ion-exchange column purified and shipped in a 2D barcoded Matrix tube containing 10ug of transfection-ready, dried plasmid DNA (reconstitute with 100 ul of water).

- Reconstitution Method:**
1. Centrifuge at 5,000xg for 5min.
 2. Carefully open the tube and add 100ul of sterile water to dissolve the DNA.
 3. Close the tube and incubate for 10 minutes at room temperature.
 4. Briefly vortex the tube and then do a quick spin (less than 5000xg) to concentrate the liquid at the bottom.
 5. Store the suspended plasmid at -20°C. The DNA is stable for at least one year from date of shipping when stored at -20°C.

RefSeq: [NM_003934.2](#)

RefSeq Size: 3175 bp

RefSeq ORF: 1719 bp

Locus ID: 8939

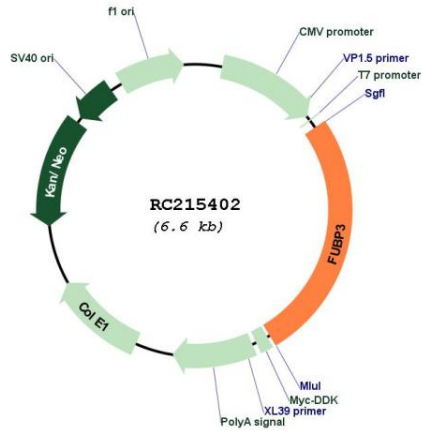
UniProt ID: [Q96I24](#)

Cytogenetics: 9q34.11-q34.12

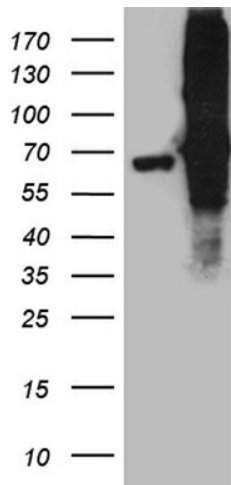
MW: 61.5 kDa

Gene Summary: May interact with single-stranded DNA from the far-upstream element (FUSE). May activate gene expression.[UniProtKB/Swiss-Prot Function]

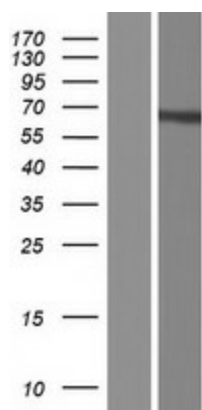
Product images:



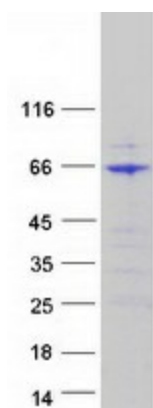
Circular map for RC215402



HEK293T cells were transfected with the pCMV6-ENTRY control (Cat# [PS100001], Left lane) or pCMV6-ENTRY FUBP3 (Cat# RC215402, Right lane) cDNA for 48 hrs and lysed. Equivalent amounts of cell lysates (5 ug per lane) were separated by SDS-PAGE and immunoblotted with anti-FUBP3 antibody (Cat# [TA812228]). Positive lysates [LY418344] (100ug) and [LC418344] (20ug) can be purchased separately from OriGene.



Western blot validation of overexpression lysate (Cat# [LY418344]) using anti-DDK antibody (Cat# [TA50011-100]). Left: Cell lysates from untransfected HEK293T cells; Right: Cell lysates from HEK293T cells transfected with RC215402 using transfection reagent MegaTran 2.0 (Cat# [TT210002]).



Coomassie blue staining of purified FUBP3 protein (Cat# [TP315402]). The protein was produced from HEK293T cells transfected with FUBP3 cDNA clone (Cat# RC215402) using MegaTran 2.0 (Cat# [TT210002]).