

## Product datasheet for RC215399

### RECQ4 (RECQL4) (NM\_004260) Human Tagged ORF Clone

#### Product data:

Product Type:	Expression Plasmids
Product Name:	RECQ4 (RECQL4) (NM_004260) Human Tagged ORF Clone
Tag:	Myc-DDK
Symbol:	RECQ4
Synonyms:	RECQ4
Mammalian Cell Selection:	Neomycin
Vector:	pCMV6-Entry (PS100001)
E. coli Selection:	Kanamycin (25 ug/mL)
ORF Nucleotide Sequence:	>RC215399 representing NM_004260 Red=Cloning site Blue=ORF Green=Tags(s)

TTTTGTAATACGACTCACTATAGGGCGGCCGGAATTCGTCGACTGGATCCGGTACCGAGGAGATCTGCC  
GCC**CGATCGCC**

ATGGAGCGGCTGCGGGACGTGCGGGAGCGGCTGCAGGCGTGGGAGCGCGGTTCCGACGGCAGCGGGGCGGACCGGAGCCAGGACGACGTGGAGGCGGCGCCGAGGAGACCCGCGGCTCTACCGGGAATACCGCAC  
TCTGAAGCGTACCAGGGCCAGGCCGGCGGGCTCCGAGCTCCGAGTCGCTCCCGCGGCGGGCGAA  
GAGGCGCCAGAGCCCGCTGCTGGGGGCCCATCTGAATCGGGTGCACCAAGAGTCCACAGTCTACGC  
CAGGGCGGAGCCCGAGGCTCGGTGCCGACTACGGCAGCGGCTCAAGCCAATCTGAAAGGCACCCCT  
GCAGGCCGAGCCAGCCCTGGGCCGAGACCGTGGCCTCTAGGAAGAGCCTCATCTAAGGCATCCACCCCA  
AAGCCCCAGGTACAGGGCTGTCCCCTCCTTTGCAGAAAAAGTCAAGTATGAGCCTCCACAGCTCCCTG  
AGCCCCAGCCAAGGCCAGGCCGGCTCCAGCATCTGCAGGCATCCCTGAGCCAGCGGCTGGGCTCCCTAGA  
TCCTGGCTGGTTACAGCGATGTCACAGTGGAGTCCCAGATTTTCTGGGGGCCCAAGCCTGCAGGCCCT  
GATCTAGGCTCAGAGGAATCACAACTTCTGATCCCTGGTGGTGGTGTCTCTGGTCTGGTGGTGGT  
CCCAGGGCCAGAGGCTTCAAGCCTTCAAGAAGTCAAGTCCGTGGGGAGCCCCAGCCAGCAGCAG  
TGGAGGCGAGAAGCGGAGATGGAACGAGGAGCCCTGGGAGAGCCCGCACAGTCCAGCAGGAGCAGC  
CAAGTGGACCCCATCGAGGGGCTGGGCTGTAGCAGTTGAGGAAGCCCTCCAGGGGAACCTGTAC  
AGGCACAGCCACCTCAGCCCTGCAGCAGCCATCGAACCAGGTACCAGGACTCAGCCCTCCAGTCA  
AGCTAGGCTGGGAAGGCTGAGGGCACAGCCCCCTGCACATCTTCCCTCGGCTGGCCCGCCATGACAGG  
GGCAATTACGTACGGCTCAACATGAAGCAGAAACTACGTGCGGGGCCGGGCACTCCGTAGCAGGCTCC  
TCCGCAAGCAGGCATGGAAGCAGAAGTGGCGGAAGAAAGGGGAGTGTGGGGTGGTGGTGGTGGTGGT  
CACAAACCAAGGAGTCTTGTTCCTGAACGAGCAGTTCGATCACTGGCAGCCAGTGTCCCGGCCAGCA  
AGTGAGGAAGACACAGATGCTGTGGGCTGAGCCACTGGTTCCTTACCACAACCTGTACTGAGGTGC  
CCAGCCTGGACCCACCGTGTGCCACTCTACTCCTGGGGCCCTCAGGGCAGTTGGCAGAGACCGCGC  
TGAGGTGTCCAGCCCTGGAGCAGCTGGGGACCAAGCCTTTCGCCCTGGGCAGGAGCGTGCAGTCATG



[View online >](#)

CGGATCCTGTCTGGCATCTCCACGCTGCTGGTGCCTACAGGTGCCGCAAGTCCCTGTGCTACCAGC  
TCCCAGCGCTGCTCTACAGCCGGCGCAGCCCCTGCCTCACGTTGGTCGTCTCTCCCCTGCTGCTACTCAT  
GGATGACCAGGTGTCTGGCCTGCCACCCTGTCTCAAGGCGGCCTGCATACACTCGGGCATGACCAGGAAG  
CAACGGGAATCTGTCTGCAGAAGATTCGGGCAGCCAGGTACACGTGCTGATGCTGACACCTGAGGCAC  
TGGTGGGGGGGGAGGCCCTCCCTCCAGCCGACAGCTGCCTCCAGTTGCTTTTGCCTGCATTGATGAGGC  
CCTACTGCCTCTCCAGTGGTCCCAAACTTCCGGCCCTGCTACCTGCGCGTCTGCAAGGTGCTTCGGGAG  
CGCATGGCGTGCCTGCTTCCGGCCCTCACAGCCACAGCCACACGCCGCACTGCCAGTGACGTGGCAG  
AGCACCTGGCTGTGGCTGAAGAGCCTGACCTCCAGGGCCAGCCCAGTTCCCAACCACTGCACCTTTC  
CGTGCCATGGACAGGGACACAGACCAGGCACTGTTGACGCTGCTGCAAGGCAAACGTTTTCAAAACCTC  
GATTCCATTATCATTTACTGCAACC GGCGGAGGACACAGAGCGGATCGTGCCTCCTCCGAACCTGCC  
TGCACGCAGCCTGGGTCCAGGGTCTGGAGGTCGTGCCCCAAAACACAGCCGAGGCCTACCACGGGG  
CATGTGCAGCCGGGAACGGCGGGGTACAGCGAGCCTTTCATGCAGGGCCAGTTGCGGGTGGTGGCC  
ACGGTGGCCTTTGGGATGGGCTGGACCGCCAGATGTGCGGGCTGTGCTGCATCTGGGGCTGCCCCAA  
GCTTCGAGAGCTACGTGCAGGCCGTGGCCGGCCGGCGTGACGGGCAGCCTGCCACTGCCACCTTT  
CCTGCAGCCCAGGGCGAAGACCTGCGAGAGCTGCGCAGACATGTGCACGCCGACAGCAGGACTTCTG  
GCTGTGAAGAGGCTGGTACAGCGCGTGTCCAGCCTGCACCTGCACCTGCACCAGGCCGCCCTCGGAGC  
AGGAAGGGGCCGTGGGTGGGGAGAGGCCTGTGCCAAAGTACCCCCCTCAAGAGGCTGAGCAGCTTAGCCA  
CCAAGCAGCCCCAGGACCCAGAAGGGTCTGCATGGGCCATGAGCGGGCACTCCCAATACAGCTTACCCTA  
CAGGCTTTGGACATGCCGGAGGAGGCCATCGAGACTTTGCTGTGCTACCTGGAGCTGCACCCACACCACT  
GGCTGGAGCTGCTGGCGACCACCTATACCCATTGCCGTGTAAGTGCCTGGGGGCCCTGCCAGCTCCA  
GGCCCTGGCCACAGGTGTCCCCTTTGGCTGTGTGCTTGGCCAGCAGCTGCCTGAGGACCCAGGGCAA  
GGCAGCAGCTCCGTGGAGTTTGACATGGTCAAGCTGGTGGACTCCATGGGCTGGGAGCTGGCCTCTGTGC  
GGCGGGCTCTCTGCCAGCTGCAGTGGGACCACGAGCCCAGGACAGGTGTGCGGCGTGGGACAGGGTGCT  
TGTGGAGTTCAGTGAGCTGGCCTTCCACCTTCGCAGCCCGGGGACTTGACCGCTGAGGAGAAGGACCAG  
ATATGTGACTTCTCTATGGCCGTGTGCAGGCCGGGAGCGCCAGGCCCTGGCCCGTCTGCGCAGAACCT  
TCCAGGCTTTTACAGCGTAGCCTTCCCAGCTGCGGGCCCTGCCTGGAGCAGCAGGATGAGGAGCGCAG  
CACCAGGCTCAAGGACTGCTCGGCCGCTACTTTGAGGAAGAGGAAGGGCAGGAGCCGGGAGGCATGGAG  
GACGCACAGGGCCCCGAGCCAGGGCAGGCCAGACTCCAGGATTGGGAGGACCAGGTCCGCTGCGACATCC  
GCCAGTTCCTGTCCCTGAGGCCAGAGGAGAAGTTCTCCAGCAGGGCTGTGGCCCGCATCTTCCACGGCAT  
CGGAAGCCCTGTACCCGGCCAGGTGTACGGGCAGGACCGACGCTTCTGGAGAAAATACCTGCACCTG  
AGCTTCCATGCCCTGGTGGCCCTGGCCACGGAAGAGCTCTGCAGGTGGCCCGC

ACGCGTACGCGGGCCGCTCGAGCAGAACTCATCTCAGAAGAGGATCTGGCAGCAAATGATATCCTGGATT  
ACAAGGATGACGACGATAAGGTTTAA

**Protein Sequence:** >RC215399 representing NM\_004260  
 Red=Cloning site Green=Tags(s)

```

MERLRDVRERLQAWERAFRRQRGRRPSQDDVEAAPEETRALYREYRTLKRTTGQAGGGLRSSESLPAAAE
EAPPEPRCWGPHLNRAATKSPQSTPGRSRQGSVPDYQRLKANLKGTLQAGPALGRRPWPLGRASSKASTP
KPPGTGPVPSFAEKVSDPEPQLPEPQPRPGRLQHLQASLSQRLGSLDPGWLQRCHSEVPDFLGAPKACRP
DLGSEESQLLIPGESAVLGPAGSQGPEASAFQEVSIRVGSQPSSSGGEKRRWNEEPWESPAQVQVQESS
QAGPPEGAGAVAVEEDPPGEPVQAQPPQPCSSPSNPRYHGLSPSSQARAGKAEGTAPLHIFPRLARHDR
GNYVRLNMKQKHVYRGRALRSRLLRKQAWKQKWRKKGECFGGGGATVTTKESCFLEQFDHWAQAQCPRPA
SEEDTDAVGPPELVPSPQPVPEVPSLDPTVLPVLSLSPGSLAETPAEVFQALEQLGHQAFRPGQERAVM
RILSGISTLLVLPAGKSLCYQLPALLYSRRSPCLTLVVSPLLMLDDQVSGLPPCLKAACIHSMTKTRK
QRESVLQKIRAAQVHMLTPEALVGAGGLPAAQLPPVAFACIDEAHCLSQWSHNRPCYL RVCKVLRRE
RMGVHCFGLTATATRRASDVAQHLVAEEDLHGPAPVPTNLHLVSMRDRDQALLTLLQGKRFQNL
DSIIICYNRREDTERIAALLRTCLHAAWVPGSGRAPKTTAEAYHAGMCSRERRRVRQAFMQQLRVVVA
TVAFGMGLDRPDVRAVLHLGLPPSFESYVQAVGRAGRDGQPAHCHLFLQPQGEDLRELRHVHADSTDFL
AVKRLVQRVFPACTCTCTRPPSEQEAGVGERPVPKYPPQEAELSHQAAPGPRRVCMGHERALPIQLTV
QALDMPEEAIETLLCYLELHPHHWLELLATTYTHCRLNCPGGPAQLQALAHRCPPPLAVCLAQQLPEDPGQ
GSSSVFEFDMVKLVDSMGWELASVRRALCQLQWDHEPRTGVRRTGVLVFVSELAFHLRSPGDLTAEKQDQ
ICDFLYGRVQARERQALARLRTFQAFHSAVFPSCGPCLEQQDEERSTRCLKDLLGRYFEEEEQEPGGME
DAQGPEPGQARLQDWEDQVRCDIRQFLSLRPEEKFSRAVARIFHIGISPCYPAQVYVQDRRFWRKYLHL
SFHALVGLATEELLQVAR
  
```

TRTRPLEQKLISEEDLAANDILDYKDDDDKVV

**Chromatograms:** [https://cdn.origene.com/chromatograms/mk6684\\_d01.zip](https://cdn.origene.com/chromatograms/mk6684_d01.zip)

**Restriction Sites:** SgfI-MluI

**Cloning Scheme:**

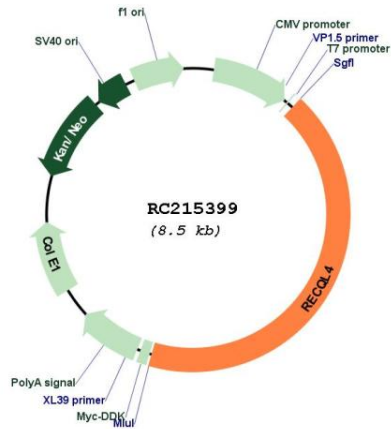


**ACCN:** NM\_004260

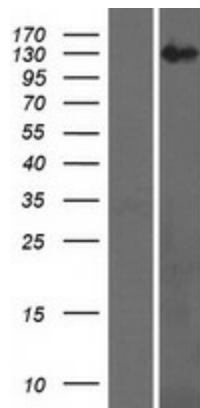
**ORF Size:** 3624 bp

<b>OTI Disclaimer:</b>	The molecular sequence of this clone aligns with the gene accession number as a point of reference only. However, individual transcript sequences of the same gene can differ through naturally occurring variations (e.g. polymorphisms), each with its own valid existence. This clone is substantially in agreement with the reference, but a complete review of all prevailing variants is recommended prior to use. <a href="#">More info</a>
<b>OTI Annotation:</b>	This clone was engineered to express the complete ORF with an expression tag. Expression varies depending on the nature of the gene.
<b>Components:</b>	The ORF clone is ion-exchange column purified and shipped in a 2D barcoded Matrix tube containing 10ug of transfection-ready, dried plasmid DNA (reconstitute with 100 ul of water).
<b>Reconstitution Method:</b>	<ol style="list-style-type: none"><li>1. Centrifuge at 5,000xg for 5min.</li><li>2. Carefully open the tube and add 100ul of sterile water to dissolve the DNA.</li><li>3. Close the tube and incubate for 10 minutes at room temperature.</li><li>4. Briefly vortex the tube and then do a quick spin (less than 5000xg) to concentrate the liquid at the bottom.</li><li>5. Store the suspended plasmid at -20°C. The DNA is stable for at least one year from date of shipping when stored at -20°C.</li></ol>
<b>RefSeq:</b>	<a href="#">NM_004260.4</a>
<b>RefSeq Size:</b>	3820 bp
<b>RefSeq ORF:</b>	3627 bp
<b>Locus ID:</b>	9401
<b>UniProt ID:</b>	<a href="#">O94761</a>
<b>Cytogenetics:</b>	8q24.3
<b>Protein Families:</b>	Druggable Genome, Stem cell - Pluripotency
<b>MW:</b>	132.9 kDa
<b>Gene Summary:</b>	The protein encoded by this gene is a DNA helicase that belongs to the RecQ helicase family. DNA helicases unwind double-stranded DNA into single-stranded DNAs and may modulate chromosome segregation. This gene is predominantly expressed in thymus and testis. Mutations in this gene are associated with Rothmund-Thomson, RAPADILINO and Baller-Gerold syndromes. [provided by RefSeq, Jan 2010]

Product images:



Circular map for RC215399



Western blot validation of overexpression lysate (Cat# [LY418114]) using anti-DDK antibody (Cat# [TA50011-100]). Left: Cell lysates from untransfected HEK293T cells; Right: Cell lysates from HEK293T cells transfected with RC215399 using transfection reagent MegaTran 2.0 (Cat# [TT210002]).