

Product datasheet for **RC215397**

NBR1 (NM_005899) Human Tagged ORF Clone

Product data:

Product Type:	Expression Plasmids
Product Name:	NBR1 (NM_005899) Human Tagged ORF Clone
Tag:	Myc-DDK
Symbol:	NBR1
Synonyms:	1A1-3B; IAI3B; M17S2; MIG19
Mammalian Cell Selection:	Neomycin
Vector:	pCMV6-Entry (PS100001)
E. coli Selection:	Kanamycin (25 ug/mL)



[View online »](#)

ORF Nucleotide Sequence:

>RC215397 representing NM_005899
 Red=Cloning site Blue=ORF Green=Tags(s)

TTTTGTAATACGACTCACTATAGGGCGGCCGGGAATTCGTCGACTGGATCCGGTACCGAGGAGATCTGCC
 GCC**CGCATCGCC**

ATGGAACCACAGTTACTCTAAATGTGACTTTTAAAAATGAAATTCAAAGCTTTCTGGTTTCTGATCCAG
 AAAATACAACCTGGGCTGATATCGAAGCTATGGTAAAAGTTTCATTTGATCTGAATACTATTCAAATAAA
 ATACCTGGATGAGGAAAATGAAGAGGTATCCATCAACAGTCAAGGAGAATATGAAGAAGCGCTTAAGATG
 GCAGTTAAACAGGGAAACCAACTGCAGATGCAAGTCCACGAAGGGCACCATGTCGTTGATGAAGCCCCAC
 CCCAGTTGTAGGAGCAAACGACTAGCTGCCAGGGCAGGGAAGAAGCCACTTGACATTACTCTTCACT
 GGTGAGAGTCTTGGGATCAGACATGAAGACCCAGAGGATCCTGCAGTGCAGTCGTTTCCACTTGTTC
 TGTGACACAGACCAGCCTCAAGACAAGCCCCAGACTGGTTCACAAGCTACCTGGAGACGTTTCAGAGAAC
 AAGTGGTTAACGAAACGGTTGAGAAGCTTGAACAGAAATTACATGAAAAGCTTGCCTCCAGAACCATC
 CTTGGGTTCTTGTCCCTCAGAAGTCTCAATGCCTACTTCAGAAGAAACATTGTTTTTCCAGAAAACCAG
 TTCAGCTGGCATATTGCTTGCAACAACGCCAAAGAAGGATTGTTGGTGTCCGCTACCAAGTGTAGCCTAT
 GCCCATCTACAATATCTGTGAAGATTGTGAAGCAGGGCCATATGGCCATGACACTAACCAGTCTCTGCT
 GAAGTTGCGGAGACCTGTTGTGGGCTCCTCTGAACCGTTCTGCTACTCAAAGTACTCTACTCCTCGTCTT
 CCTGCTGCTCTGGAACAAGTCAGGCTCCAGAAACAGGTTGATAAGAACTTCTTAAAGCAGAAAAGCAAA
 GGTTGCGAGCTGAGAAGAAACAACGTAAGCAGAGGTCAAGGAACTTAAAAAGCAGCTTAAACTCCATAG
 GAAAATCACCTGTGGAATTCATCCATGGACTCCAGAGCCCCAAGTCTCCTTTAGGCCGACCTGAGAGC
 TTGCTCCAGTCTAATACCCTGATGCTCCCTTTCAGCCCTGTACCTCCGTTATGCCAATGCTCAGTGCAG
 CATTTGTGGATGAGAATTTGCCTGATGGACTCACCTTCAGCCAGGAACCAAGTTTATCAAACACTGGAG
 GATGAAAAATACAGGAAATGTAAGGTGGAGTGCAGACACAAGCTCAAGTTCATGTGGGAAACCTGACT
 TTGGCTTCCACAGAAAAGAAGGATGTTTTGGTTCCTGCCTCAAGGCCGGCCATGTGGGAGTTGATCTG
 TGGAGTTCATTGCCCCAGCCTTGGAGGGAACGTATACTTCCCATTGGCGTCTTTCTCACAAAGGCCAGCA
 ATTTGGGCTCGGGTCTGGTGCAGTATCATAGTAGATCCTTCCCTCCGAGAGAGCCCTGATAACATT
 GAAAAGGGCATGATCAGCTCAAGCAAACTGATGATCTCACCTGCCAGCAAGAGGAAACTTTTCTTCTGG
 CTAAGAAGAAAGACAGCTTGGTGAAGTACTGAGCAGACAGAAGGGACAGCAGCCTGCATCCCACAGAA
 GGCAAAAATGTTGCCAGTGAGAGGGAGCTCTACATCCCATCTGTGGATCTTCTGACTGCCAGGACCTG
 CTGTCCTTTGAGCTGTTGGATATAAACATTGTTCAAGAGTTGGAGAGAGTGCCCCACAACACCCCTGTGG
 ATGTGACTCCCTGCATGTCTCCTCTGCCACATGACAGTCTTTAATAGAGAAGCCAGGCTTGGGGCAGAT
 AGAGGAAGAGAATGAAGGGGCAGGATTTAAAGCACTTCTGATTCTATGGTGTGTCAGTAAAGGAAAGGCT
 GAGAACATTGCTTCTGTGGAGGAAGCAGAAGAAGACCTGAGTGGGACCCAGTTTGTGTGTGAGACAGTAA
 TCCGATCCCTTACCTGGATGCTGCCCCAGACCACAACCTCCTTGCAGACAGAAGTCTTGCAGATGAC
 ATTTGCCTTGCCTGAAGGACCCTTGGAAATGAGAAGGAGGAGATTATCCATATCGCTGAGGAAGAAGCT
 GTCATGGAGGAGGAGGAGGATGAGGAGGATGAGGAGGAGGAGGATGAGCTCAAAGATGAAGTTCAAAGTC
 AGTCTCTGCTTCTCAGAGGATTACATCATCATCCTGCCTGAGTGTGTTGATACCAGCCGCCCTGGG
 GGATTCTATGTACAGCTCTGCGCTCTCACAGCCAGGCCCTGGAGCGAGGTGCTGAAGGCAAGCCTGGGGTT
 GAGGCTGGGCAGGAACCAAGCTGAGGCTGGGGAAAAGACTCCCTGGAGGGGAGAACCAGCCACAGGACACA
 GCATAAGTGACATCCTCACGACCTCACAGACTCTGAAAACAGTGCCCTAATCCCAGAGGTAGTGGAGCT
 TCCACCGTCACTGCCAGGAGCTCTCCTTGTGTACATCATCATGGTTCCTCCAGGAGTGGATTTACCAGTT
 ACCATACCAGAAGTTTCTCAGTCCCTGATCAGATCAGAGGAGAGCCAGAGGCTCATCAGGACTTGTAA
 ACAGCAGACAGAAGAGCTATGACCACTCAAGGCACCATCATGGGAGCAGCATTGCTGGAGGACTGGTAA
 GGGGGCTTTGTCTGTTGCTGCTCTGCATAACAAGGCCCTGTTGCTGGGCCACCAGTCACTGCACAGCCA
 ATAATTTCTGAAGATCAGACAGCAGCCCTGATGGCCATCTCTTTGAAATGGGATTCTGTGACAGGCAGC
 TGAACTACGGCTGCTGAAGAAACACAATTACAATATCCTGCAGGTTGTGACAGAACTTCTCAGTTAA
 CAACAACGACTGGTACAGCCAACGCTAT

ACGCGTACGCGGCCGCTCGAGCAGAAACTCATCTCAGAAGAGGATCTGGCAGCAAATGATATCCTGGATT
 ACAAGGATGACGACGATAAGGTTTAA

Protein Sequence: >RC215397 representing NM_005899
 Red=Cloning site Green=Tags(s)

MEPQVTLNVTFKNEIQSFLVSDPENTTWADIEAMVKVSFDLNTIQIKYLDEENEEVSINSQGEYEEALKM
 AVKQGNLQMQVHEGHHVVDEAPPPVVGAKRLAARAGKKPLAHYSSLVRVLGSDMKTPEDPAVQSFPLVP
 CDTDQPQDKPPDWFTSYLETFREQVVNETVEKLEQKLHEKLVLQNP SLGSCPSEVSMPTSEETLFLPENQ
 FSWHIACNNCQRRIVGVRYQC SLCP SYNICEDCEAGPYGHD TNHVLLKLRP VVGSSEPFCHSKYSTPRL
 PAALAEQVRLQKQVDKNFLKAEKQRLRAEKKQRKAEVKELKKQLKLRKIHLWNSIHGLQSPKSLGRPES
 LLQSN TLM LPLQPCTSVMPML SAAFVDENLPD GTHLQPGTKF IKHWRMKN TG NVKWSADTKLKF MWGNLT
 LASTEKKDVLV PCLKAGHVGVSVVEFIAPALEGTYTSHWRLSHKGQQFGPRVWCSIIVDPFPSEESPDNI
 EKGMISSKTDLLTCQEEETFLLAKEERQLGEVTEQTEGTAACIPQKAKNVASERELYIPVDLLTAQDL
 LSFELLDINIVQELERVP HNT PVDVTPCMSPLPHDSPLIEKPGLGQIEEENEGAGFKALPDSMVSVKRKA
 ENIASVEEAEEDLSGTQFVCETVIRSLTLDAAPDHNPPCRQKSLQMTFALPEGPLGNEKEEIIHIAEEEA
 VMEEEEDEEEDDELKDEVQSQSSASSEDYIIILPECFDTSRPLGDSMYSSALSQPLERGAEGKPGV
 EAGQEPAEAGERLPGGENQPQEHISDILTTSQTLETVPLIPEVVELPPSLPRSSPCVHHHSGPGVDLPV
 TIPEVSSVPDQIRGEP RGS SGLVNSRQKSYDHSRHHHSS IAGGLVKGAL SVAASAYKALFAGPPVTAQP
 IISEDQTAALMAHLFEMGFCDRQLNLRLLKKNYINILQVVTELLQLNNDWYSQRY

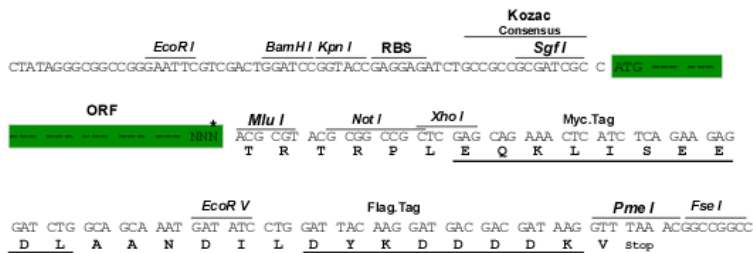
TRTRPLEQKLISEEDLAANDILDYKDDDDKV

Chromatograms: https://cdn.origene.com/chromatograms/mk6594_d08.zip

Restriction Sites: SgfI-MluI

Cloning Scheme:

Cloning sites used for ORF Shuttling:



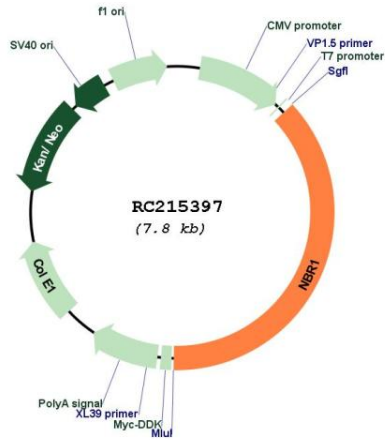
* The last codon before the Stop codon of the ORF

ACCN: NM_005899

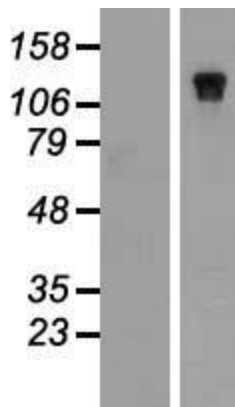
ORF Size: 2898 bp

OTI Disclaimer:	The molecular sequence of this clone aligns with the gene accession number as a point of reference only. However, individual transcript sequences of the same gene can differ through naturally occurring variations (e.g. polymorphisms), each with its own valid existence. This clone is substantially in agreement with the reference, but a complete review of all prevailing variants is recommended prior to use. More info
OTI Annotation:	This clone was engineered to express the complete ORF with an expression tag. Expression varies depending on the nature of the gene.
Components:	The ORF clone is ion-exchange column purified and shipped in a 2D barcoded Matrix tube containing 10ug of transfection-ready, dried plasmid DNA (reconstitute with 100 ul of water).
Reconstitution Method:	<ol style="list-style-type: none">1. Centrifuge at 5,000xg for 5min.2. Carefully open the tube and add 100ul of sterile water to dissolve the DNA.3. Close the tube and incubate for 10 minutes at room temperature.4. Briefly vortex the tube and then do a quick spin (less than 5000xg) to concentrate the liquid at the bottom.5. Store the suspended plasmid at -20°C. The DNA is stable for at least one year from date of shipping when stored at -20°C.
RefSeq:	NM_005899.5
RefSeq Size:	4394 bp
RefSeq ORF:	2901 bp
Locus ID:	4077
UniProt ID:	Q14596
Cytogenetics:	17q21.31
Domains:	PB1, ZnF_ZZ
Protein Families:	Druggable Genome
MW:	107.2 kDa
Gene Summary:	The protein encoded by this gene was originally identified as an ovarian tumor antigen monitored in ovarian cancer. The encoded protein contains a B-box/coiled-coil motif, which is present in many genes with transformation potential. It functions as a specific autophagy receptor for the selective autophagic degradation of peroxisomes by forming intracellular inclusions with ubiquitylated autophagic substrates. This gene is located on a region of chromosome 17q21.1 that is in close proximity to the BRCA1 tumor suppressor gene. Alternative splicing of this gene results in multiple transcript variants. [provided by RefSeq, Apr 2014]

Product images:



Circular map for RC215397



Western blot validation of overexpression lysate (Cat# [LY410463]) using anti-DDK antibody (Cat# [TA50011-100]). Left: Cell lysates from untransfected HEK293T cells; Right: Cell lysates from HEK293T cells transfected with [RC222234] using transfection reagent MegaTran 2.0 (Cat# [TT210002]).