

## Product datasheet for RC215390

### Syntenin (SDCBP) (NM\_005625) Human Tagged ORF Clone

#### Product data:

Product Type:	Expression Plasmids
Product Name:	Syntenin (SDCBP) (NM_005625) Human Tagged ORF Clone
Tag:	Myc-DDK
Symbol:	Syntenin
Synonyms:	MDA-9; MDA9; ST1; SYCL; TACIP18
Mammalian Cell Selection:	Neomycin
Vector:	pCMV6-Entry (PS100001)
E. coli Selection:	Kanamycin (25 ug/mL)
ORF Nucleotide Sequence:	>RC215390 ORF sequence Red=Cloning site Blue=ORF Green=Tags(s)

TTTTGTAATACGACTCACTATAGGGCGCCGGGAATTCGTCGACTGGATCCGGTACCGAGGAGATCTGCC  
GCC**CGGATCGCC**

ATGTCTCTCTATCCATCTCTCGAAGACTTGAAGGTAGACAAAGTAATTCAGGCTCAAACCTGCTTTTTCTG  
CAAACCTGCCAATCCAGCAATTTGTGAGAAGCTTCTGCTCCTATCCCTCACGATGGAAATCTCTATCC  
CAGACTGTATCCAGAGCTCTCTCAATACATGGGGCTGAGTTTAAATGAAGAAGAAATACGTGCAAATGTG  
GCCGTGGTTTCTGGTGCACCACTTCAGGGGCAGTTGGTAGCAAGACCTTCCAGTATAAATATATGGTGG  
CTCCTGTAACCTGGTAATGATGTTGGAATTCGTAGAGCAGAAATTAAGCAAGGGATTTCGTGAAGTCATTTT  
GTGTAAGGATCAAGATGGAAAAATTGGACTCAGGCTTAAATCAATAGATAATGGTATATTTGTTTCAGCTA  
GTCCAGGCTAATTCCTCCAGCCTCATTGGTTGGTCTGAGATTTGGGGACCAAGTACTTCAGATCAATGGTG  
AAAACCTGTGCAGGATGGAGCTCTGATAAAGCGCACAAGGTGCTCAAACAGGCTTTTGGAGAGAAGATTAC  
CATGACCATTTCGTGACAGGCCCTTTGAACGGACGATTACCATGCATAAGGATAGCACTGGACATGTTGGT  
TTTATCTTTAAAAATGGAAAAATAACATCCATAGTGAAGATAGCTCTGCAGCCAGAAATGGTCTTCTCA  
CGGAACATAACATCTGTGAAATCAATGGACAGAATGTCATTGGATTGAAGGACTCTCAAATTCAGAGCAT  
ACTGTCAACATCTGGGACTGTAGTTACTATTACAATCATGCCTGCTTTTATCTTTGAACATATTATTAAG  
CGGATGGCACCAAGCATTATGAAAAGCCTAATGGACCACACCATTCTGAGGTT

**ACGCGT**ACGCGGCCGCTCGAGCAGAAACTCATCTCAGAAGAGGATCTGGCAGCAAATGATATCCTGGATT  
ACAAGGATGACGACGATAAGGTTTAA



[View online »](#)

**Protein Sequence:** >RC215390 protein sequence  
Red=Cloning site Green=Tags(s)

MSLYPSLEDLKVDKVIQAQTAFSANPANPAILSEASAPIPHDGNLYPRLYPELSQYMGSLNNEEIRANV  
 AVVSGAPLQGQLVARPSSINYMVAPVTGNDVGIIRAEIKQGIREVILCKDQDGKIGLRLKSIDNGIFVQL  
 VQANSPASLVGLRFGDQVLQINGENCAGWSSDKAHKVLKQAFGEKITMTIRDRPFERTITMHKDSTGHVG  
 FIFKNGKITSIVKDDSSAARNGLL TEHNICEINGQNVIGLKDSQIADILSTSGTVVTITIMPAFIFEHIK  
 RMAPSIMKSLMDHTIPEV

TRTRPLEQKLISEEDLAANDILDYKDDDDKV

**Chromatograms:** [https://cdn.origene.com/chromatograms/mk6462\\_c09.zip](https://cdn.origene.com/chromatograms/mk6462_c09.zip)

**Restriction Sites:** SgfI-MluI

**Cloning Scheme:**



**ACCN:** NM\_005625

**ORF Size:** 894 bp

**OTI Disclaimer:** The molecular sequence of this clone aligns with the gene accession number as a point of reference only. However, individual transcript sequences of the same gene can differ through naturally occurring variations (e.g. polymorphisms), each with its own valid existence. This clone is substantially in agreement with the reference, but a complete review of all prevailing variants is recommended prior to use. [More info](#)

**OTI Annotation:** This clone was engineered to express the complete ORF with an expression tag. Expression varies depending on the nature of the gene.

**Components:** The ORF clone is ion-exchange column purified and shipped in a 2D barcoded Matrix tube containing 10ug of transfection-ready, dried plasmid DNA (reconstitute with 100 ul of water).

**Reconstitution Method:**

1. Centrifuge at 5,000xg for 5min.
2. Carefully open the tube and add 100ul of sterile water to dissolve the DNA.
3. Close the tube and incubate for 10 minutes at room temperature.
4. Briefly vortex the tube and then do a quick spin (less than 5000xg) to concentrate the liquid at the bottom.
5. Store the suspended plasmid at -20°C. The DNA is stable for at least one year from date of shipping when stored at -20°C.

**RefSeq:** [NM\\_005625.4](#)

**RefSeq Size:** 2173 bp

**RefSeq ORF:** 897 bp

**Locus ID:** 6386

**UniProt ID:** [O00560](#)

**Cytogenetics:** 8q12.1

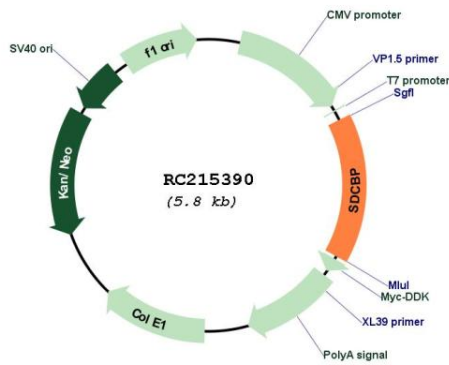
**Domains:** PDZ

**Protein Families:** Druggable Genome, Transmembrane

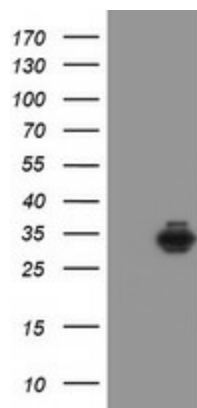
**MW:** 32.4 kDa

**Gene Summary:** The protein encoded by this gene was initially identified as a molecule linking syndecan-mediated signaling to the cytoskeleton. The syntenin protein contains tandemly repeated PDZ domains that bind the cytoplasmic, C-terminal domains of a variety of transmembrane proteins. This protein may also affect cytoskeletal-membrane organization, cell adhesion, protein trafficking, and the activation of transcription factors. The protein is primarily localized to membrane-associated adherens junctions and focal adhesions but is also found at the endoplasmic reticulum and nucleus. Alternative splicing results in multiple transcript variants encoding different isoforms. Related pseudogenes have been identified on multiple chromosomes. [provided by RefSeq, Jan 2017]

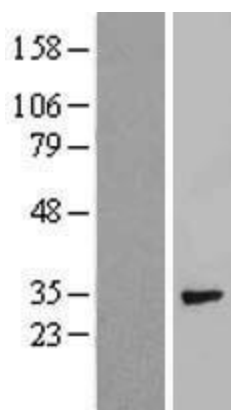
Product images:



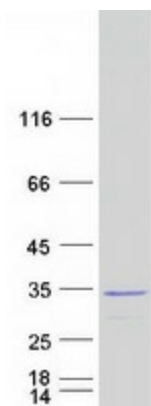
Circular map for RC215390



HEK293T cells were transfected with the pCMV6-ENTRY control (Cat# [PS100001], Left lane) or pCMV6-ENTRY SDCBP (Cat# RC215390, Right lane) cDNA for 48 hrs and lysed. Equivalent amounts of cell lysates (5 ug per lane) were separated by SDS-PAGE and immunoblotted with anti-SDCBP (Cat# [TA504796]). Positive lysates [LY417182] (100ug) and [LC417182] (20ug) can be purchased separately from OriGene.



Western blot validation of overexpression lysate (Cat# [LY417182]) using anti-DDK antibody (Cat# [TA50011-100]). Left: Cell lysates from untransfected HEK293T cells; Right: Cell lysates from HEK293T cells transfected with RC215390 using transfection reagent MegaTran 2.0 (Cat# [TT210002]).



Coomassie blue staining of purified SDCBP protein (Cat# [TP315390]). The protein was produced from HEK293T cells transfected with SDCBP cDNA clone (Cat# RC215390) using MegaTran 2.0 (Cat# [TT210002]).