

Product datasheet for **RC215385**

WDR27 (NM_182552) Human Tagged ORF Clone

Product data:

Product Type:	Expression Plasmids
Product Name:	WDR27 (NM_182552) Human Tagged ORF Clone
Tag:	Myc-DDK
Symbol:	WDR27
Mammalian Cell Selection:	Neomycin
Vector:	pCMV6-Entry (PS100001)
E. coli Selection:	Kanamycin (25 ug/mL)



[View online »](#)

ORF Nucleotide Sequence:

>RC215385 representing NM_182552
 Red=Cloning site Blue=ORF Green=Tags(s)

TTTTGTAATACGACTCACTATAGGGCGGCCGGAATTCGTCGACTGGATCCGGTACCGAGGAGATCTGCC
 GCC**CGGATCGCC**

ATGAAAAATCCCAAGACATTTTCTCAAGTAATGGTGGCTGTCTAAGTGATATAGTTATAGAAAAATACC
 TGGTTGAATCCAAGGAGTCTGTGTCTCATGTTTCAGCTTGCTTGCAGCATGCAGGACTGTGCTTTCCCTTT
 GGATGGAAGTGAAGTTGTATATGGAACACTAAGGATCCTTCTCATCAGCTTCTAATCCTACGAGGACAC
 CATCAGCCAATTACTGCTATGGCTTTTGGAAATAAAGTGAACCCACTTCTAATCTGCTCAGCATCACTGG
 ATTATGTTATAATGTGGAACCTGGATGAATGTAGAGAGAAAGTACTTCAAGGGCTGGTCCCTCGAGGGAC
 TGTCTATGGGCTCGCTTTTGGAAAGGTGCTGTGTTTACAGTTGAGCCTGGATGATCATGTTGTTGCCGTG
 TGTGCTGGAACAAAATATTCATGCTGGATATTGAGCAGCGATTTTCTGTGACATACATAGAACGTCCTG
 ATGTTAATAACCGCCACAAAGTCCCACCACCGACTTCTGCACACATTCTCAGACTCAGGCTGTTCCG
 GGCCGAGCTGCAGGGCCACTGGGCCCGGTGACTGCGGTGGAGTTCTGTCCCTGGCGAGCAGGCACCCCTC
 ATCTCGGCGTCTGAGGACAGAGGCTTAAAGTCTGGGACCATTGTACAGGATCATTAAATACAGTTCAT
 CTGTGTTATCAGCATATCCTCTTCTCAGTTTATTCATTGATGCAGAAAGCAGGCAGCTGGTCAACCGGGT
 TGCTGACGGCCAGCTTTGGATCTTCAGTTTGTGGATGGACACCATTATCGTCTGTGGCACGGGTTGAC
 CTAAGGAAGAAGACAGAGACTTTCTCCACAAGAAGGGTTAAGTCTGGGCTGTGCAGCCAGCCAGAAGAAA
 GCCAGCTTCCCTCTACAAGTCTCTGGGAAAAGGAGAGCAGGTTGAAGTAAACATTTCTGTACTGAGACT
 TGCACCCTGTGATCTCTCACTCATCCAAATCTGCATGTGGATGCTTTTCTTCTGAGAACCCCGATGT
 GTGTGGATCGGAAGCTCAGTGGGCTTATTCGATTTAACCTGGCAAACCTGGAAGTGAAGCTGCTTTGT
 ATTACAAGGATTTCCAGAGCCTCAGCATCCTGCTGGCCGGATCGTGTGCCCTGAGGAACCCGACGCGGA
 TCAAAAGGTGCTGTGCTTGGCTCCCTCTTTGGCGGAAGATTGCCGTGTTGGAGATCAACCGGCC
 GCGCTAGTCAGGGCTCAGCAGTGCCACAGCATGGGGCAGAGCCTCTCGGTGCCAGCCAGCTCCTGTGTCC
 TACCGACCTCTCCACTGTATCTGGGAATTGCCAAGGAGAAGAGTACCAAGGCTGTAGTGAACAGCGACG
 TGCTGCACGGAACGTCATGAAGGACCAACGCTGGTTTTCCATAGTAAAGTTAGTTCATCTGTTATGCG
 TCAGCACCATGTAATATGTTTTACCAAAGACCAACATCAAGAGTGAAGGGAAAGGATCTTCAAGGA
 GCAGGAGCAGCTGCGCACGGGAGGCATACCCCGTGGAGTGCCTGTGCCACCAAGCCCGGCCCCAGGT
 CGCTGCCGCCCCACCTGCACACGTGTATGCTGCATCCAGTACTCAGGAGATGGGCAGTGGCTGGCCTGT
 GGGTTGGCCAACCATCTGTTACTCGTTTTGATGCCAGCCTGACTGGGACACCTGCTGTGTTTTCAGGTC
 ACGACGGGGCAGTGAATGCCGTGTGCTGGAGCCAGGACCGGAGGTGGCTGCTCTGCGGCCCGGACGG
 GACCCTGCGAATGTGGTGGCTCGTGGGGCAGAGCTCGCACTGCTTCTGGGCAAAGACATGTTTTCTAAA
 CCTATACAGTCTGCACAGTTCTATTATATAGATGCCTTTATATTGTTATCTTCTGGCCCTGAATTTCAAG
 TACTGAGGTATCACATTGACACTTGCAAAGATGAGATTAAGAGATATAAACAGAAGAGCAAGTCCAAGCT
 GATTTGCAGGCTCTCCACGACGGGTGCAGTAGACATGACCAGTTTATCGGCAGTCAACGACTTTTATTCC
 CACATCGTACTCGCAGCTGGCCGGAACAGGACCGTGGAAAGTGTGACCTCAACGCCGCTGCAGTGCAG
 CGGTGATAGCGGAAGCCCACTCACGGCTGTCCATCAAATCTGCCAAAATAAAGGTTTCATATTTACAAC
 CCAACAGCCTCAGGCTTATAACCTTTTCTGACCACGGCCATTGGCGATGGGATGAGACTGTGGGACCTG
 AGAACCTGAGGTGTGAGCGCCACTTTGAAGGGCATCAACCCGCGGCTATCCATGTGGAATCGCTTTCA
 GTCTTTGTGGACGATTTCGCGCTTGTGGGGCCGAGGACAGACACGCTTACGTGTATGAAATGGGCTCAAG
 CACGTTTTCTACCGGCTGGCTGGGCACACAGACTGTCACTGGAGTGGCCTTCAACCCATCAGCGCC
 CAGCTTGCCACAGCTACCTGGATGGTAAACTCCAGCTCTTTCTAGCTGAG

ACGCGTACGCGGCCGCTCGAGCAGAACTCATCTCAGAAGAGGATCTGGCAGCAAATGATATCCTGGATT
 ACAAGGATGACGACGATAAGGTTTAA

Protein Sequence: >RC215385 representing NM_182552
Red=Cloning site Green=Tags(s)

```
MENPQDIFSSNGGCLSDIVIEKYLVESKESVSHVQLACSMQDCAFPLDGTCLCIWNTKDPHQLLILRGH
HQPITAMAFGNKVNPLLICASLDYVIMWNLDECREKVLQGLVPRGTVMGSLGKVLCLQLSLDDHVAV
CAGNKIFMLDIEQRF SVTYIERPDVNNRHKVPPTFLHTFSQTQAVRAELQGHLPVTAVEFCPWRAGTL
ISASEDRGFKVWDHCTGSLIYSSSVLSAYPLL SLFIDAESRQLVTGCADGQLWIFSLMDGHHYRRVARVD
LRKKTETFSRRVKSGLCSQPEESQLPST SALGKEQVEVTFPVLRLAPCDLSLIPNSACGCL SSENTRC
VWIGSSVGLFVFNLANLEVEAALYYKDFQSL SILLAGSCALRNRTADQKVLCLLASLFGGKIIVLEINPA
ALVRAQQCPMSGQLSVPASSCVLPTSPLYLGI AKEKSTKAASEQRRARNVMKDQRLVFH SKVRSSGYA
SAPHVTMFSPKTNIKSEGKSSRSRSCAREAYPECAVPTKPGPQVAAAAPTCTRVCCI QYSGDGQWLAC
GLANHLLL VFDASLTGTPAVFSGHDGAVNAVCWSQDRRWLL SAARDGTLRMWSARGAELALLL GKDMFSK
PIQSAQFYIIDAFILLSSGPEFQLLR YHIDTCKDEIKRYKQKSKSLICRLSTTGAVDMTSL SAVNDFYS
HIVLAAGRNRTEVFDLNAGCSAAVIAEAHSRPVH QICQNKGSSFTTQPQAYNFLTTAIGDGMRLWDL
RTLRCERHFEGHPTRGYPCGIAFSPCGRFAACGAEDRHAYVYEMGSSTFSHRLAGHTDTVTGVAFNPSAP
QLATATLDGKLQLFLAE
```

TRTRPLEQKLISEEDLAANDILDYKDDDDKV

Chromatograms: https://cdn.origene.com/chromatograms/mk8027_d03.zip

Restriction Sites: Sgfl-MluI

Reconstitution Method:

1. Centrifuge at 5,000xg for 5min.
2. Carefully open the tube and add 100ul of sterile water to dissolve the DNA.
3. Close the tube and incubate for 10 minutes at room temperature.
4. Briefly vortex the tube and then do a quick spin (less than 5000xg) to concentrate the liquid at the bottom.
5. Store the suspended plasmid at -20°C. The DNA is stable for at least one year from date of shipping when stored at -20°C.

RefSeq: [NM_182552.3](#)

RefSeq Size: 3193 bp

RefSeq ORF: 2688 bp

Locus ID: 253769

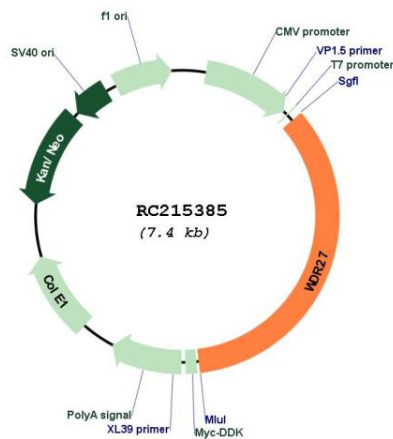
UniProt ID: [A2RRH5](#)

Cytogenetics: 6q27

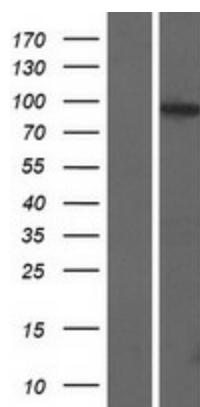
MW: 93.5 kDa

Gene Summary: This gene encodes a protein with multiple WD repeats. Proteins with these repeats may form scaffolds for protein-protein interaction and play key roles in cell signalling. Alternative splicing results in multiple transcript variants, but the full-length structure of some of these variants cannot be determined. [provided by RefSeq, Nov 2015]

Product images:



Circular map for RC215385



Western blot validation of overexpression lysate (Cat# [LY405477]) using anti-DDK antibody (Cat# [TA50011-100]). Left: Cell lysates from untransfected HEK293T cells; Right: Cell lysates from HEK293T cells transfected with RC215385 using transfection reagent MegaTran 2.0 (Cat# [TT210002]).