

Product datasheet for **RC215382**

RASGRF1 (NM_153815) Human Tagged ORF Clone

Product data:

Product Type:	Expression Plasmids
Product Name:	RASGRF1 (NM_153815) Human Tagged ORF Clone
Tag:	Myc-DDK
Symbol:	RASGRF1
Synonyms:	CDC25; CDC25L; GNRP; GRF1; GRF55; H-GRF55; PP13187; ras-GRF1
Mammalian Cell Selection:	Neomycin
Vector:	pCMV6-Entry (PS100001)
E. coli Selection:	Kanamycin (25 ug/mL)



[View online »](#)

ORF Nucleotide Sequence:

>RC215382 representing NM_153815
 Red=Cloning site Blue=ORF Green=Tags(s)

TTTTGTAATACGACTCACTATAGGGCGGCCGGAATTCGTCGACTGGATCCGGTACCGAGGAGATCTGCC
 GCC**CGCATCGCC**

ATGTACTCGGCCATGTCACCCTTCAGCAAGGCCACGCTGGACACCAGCAAGCTCTATGTGTCCAGCAGCT
 TCACCAACAAGATTCCAGATGAGGGCGATACGACCCTGAGAAGCCCGAAGACCCTTCAGCGCTCAGCAA
 GCAGAGCTCAGAAGTCTCCATGAGAGAGGAGTCAGATATTGATCAAAAACAGAGTGATGATGGTGATACT
 GAAACATACCAACTAAATCTCCAACAACACCCAAATCAGTCAAAAAACAAAATTCTTCAGAGTTCCAC
 TCTTTTCTATAACAATGGAGTCGTATGACCTCTGTGCTGAACTGGACAATAACCGCAGTGCCTGTG
 GGCCGCTCTGCCTTTGCCATAGCAACCGCCGGGGCAACGAGGGCACCCAAACAAGGAGAAGTACCGG
 AGGATGTCCTTAGCCAGTGCAGGGTTTCCCCAGACCAGAGGAATGGAGACAAGGAGTTTGTGATCCGCA
 GAGCAGCCACCAATCGTGTCTTGAACGTGCTCCGCCACTGGGTGTCCAAGCACTCTCAGGACTTTGAGAC
 CAACGATGAGCTCAAATGCAAGGTGATCGGCTTCTGGAAGAAGTCATGCACGCCGGAGCTCCTGACC
 CAGGAGCGGAAGGCTGCAGCCAACATCATCAGGACTCTGACCCAGGAGGCCAGGTGACAACAGATCA
 CGCTGGAGGAGATCACGCAGATGGCTGAAGGCGTGAAGGCTGAGCCCTTTGAAAACCACTCAGCCCTGGA
 GATCGCGGAGCAGCTGACCCTGCTAGATCACCTCGTCTCAAGAAGATTCCTTATGAGGATTTCTCGGA
 CAAGGATGGATGAAACTGAAAAGAATGAAAGGACCCCTTATATCATGAAAACCACTAAGCACTTCAATG
 ACATCAGTAACTTGATTGCTTCAGAAATCATCCGCAATGAGGACATCAACGCCAGGGTGAGCGCCATCGA
 GAAGTGGTGGCCGTAGCTGACATATGCCGCTGCCTCCACAACACAATGCCGACTGGAGATCACCTCG
 TCCATGAACCGCAGTGAATCTTCCGGCTCAAAAAGACGTGGCTCAAAGTCTCTAAGCAGACTAAAGCTT
 TGATTGATAAGCTCAAAAAGCTTGTCATCTGAGGGCAGATTTAAGAATCTCAGAGAAGCTCTGAAAAA
 TTGTGACCCACCCTGTGTCCCTTACCTGGGGATGTACCTCACCGACCTGGCCTTCATCGAGGAGGGGACG
 CCCAATTACACGGAAGACGGCCTGGTCAACTTCTCCAAGATGAGGATGATATCCCATATTATCCGAGAGA
 TTCGCCAGTTTCAACAACTGCCTACAAAATAGAGCACCAAGCAAGGTAACGCAATATTTACTGGACCA
 ATCTTTTGTAAATGGATGAAGAAAGCCTCTACGAGTCTTCTCTCGAATAGAACCAAAAACCTCCCCACC

ACGCGTACGCGGCCGCTCGAGCAGAAACTCATCTCAGAAGAGGATCTGGCAGCAATGATATCCTGGATT
 ACAAGGATGACGACGATAAGGTTTAA

Protein Sequence:

>RC215382 representing NM_153815
 Red=Cloning site Green=Tags(s)

MYSAMSPFSKATLDTSKLYVSSSFTNKIPDEGDTTPEKPEDPSALSKQSSEVSMREESDIDQNQSDDGDT
 ETSPTKSPPTPKSVKNKNSSEFPLFSYNNGVVMTSCRELDNNRSALSAASAFAIATAGANEGTPNKEKYR
 RMSLASAGFPDQRNGDKEFVIRRAATNRVLNVLRHVWSKHSQDFETNDELKCKVIGFLEEVMHDPELLT
 QERKAAANIIRTLTQEDPGDNQITLLEEITQMAEGVKAEPFENHSALEIAEQLTLLDHLVFKKIPYEEFFG
 QGWMKLEKNERTPYIMKTTKHFNDISNLIASEIIRNEDINARVSAIEKWVAVADICRCLHNYNAVLEITS
 SMNRSIAIFRLKKTWLVSKQTKALIDKLQKLVSEGRFKNLREALKNCDPPCVPYLGMYLTLDFIIEEGT
 PNYTEDGLVNF SKMRMISHIIREIRQFQQTAYKIEHQAKVTQYLLDQSFVMDEESLYESSLRIEPLPT

TRTRPLEQKLISEEDLAANDILDYKDDDDKV

Chromatograms:

https://cdn.origene.com/chromatograms/ja1406_a04.zip

Restriction Sites:

Sgfl-Mlul

Cloning Scheme:


ACCN: NM_153815

ORF Size: 1467 bp

OTI Disclaimer: The molecular sequence of this clone aligns with the gene accession number as a point of reference only. However, individual transcript sequences of the same gene can differ through naturally occurring variations (e.g. polymorphisms), each with its own valid existence. This clone is substantially in agreement with the reference, but a complete review of all prevailing variants is recommended prior to use. [More info](#)

OTI Annotation: This clone was engineered to express the complete ORF with an expression tag. Expression varies depending on the nature of the gene.

Components: The ORF clone is ion-exchange column purified and shipped in a 2D barcoded Matrix tube containing 10ug of transfection-ready, dried plasmid DNA (reconstitute with 100 ul of water).

Reconstitution Method:

1. Centrifuge at 5,000xg for 5min.
2. Carefully open the tube and add 100ul of sterile water to dissolve the DNA.
3. Close the tube and incubate for 10 minutes at room temperature.
4. Briefly vortex the tube and then do a quick spin (less than 5000xg) to concentrate the liquid at the bottom.
5. Store the suspended plasmid at -20°C. The DNA is stable for at least one year from date of shipping when stored at -20°C.

RefSeq: [NM_153815.2](#), [NP_722522.1](#)

RefSeq Size: 2843 bp

RefSeq ORF: 1470 bp

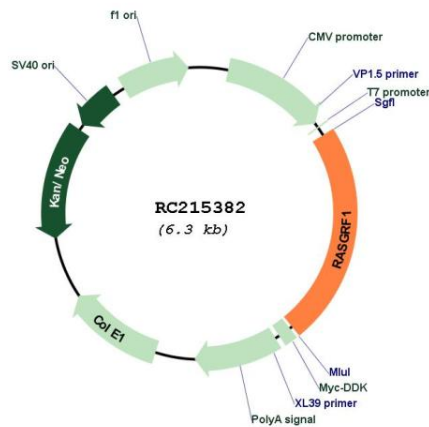
Locus ID: 5923

UniProt ID: [Q13972](#)

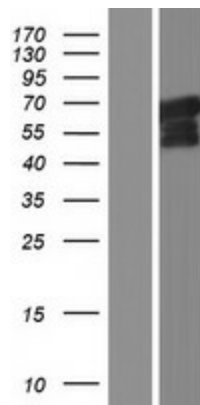
Cytogenetics: 15q25.1

Domains:	RasGEF
Protein Families:	Druggable Genome
Protein Pathways:	Focal adhesion, MAPK signaling pathway
MW:	55.3 kDa
Gene Summary:	The protein encoded by this gene is a guanine nucleotide exchange factor (GEF) similar to the <i>Saccharomyces cerevisiae</i> CDC25 gene product. Functional analysis has demonstrated that this protein stimulates the dissociation of GDP from RAS protein. The studies of the similar gene in mouse suggested that the Ras-GEF activity of this protein in brain can be activated by Ca ²⁺ influx, muscarinic receptors, and G protein beta-gamma subunit. Mouse studies also indicated that the Ras-GEF signaling pathway mediated by this protein may be important for long-term memory. Alternatively spliced transcript variants encoding distinct isoforms have been reported. [provided by RefSeq, Mar 2009]

Product images:



Circular map for RC215382



Western blot validation of overexpression lysate (Cat# [LY406963]) using anti-DDK antibody (Cat# [TA50011-100]). Left: Cell lysates from untransfected HEK293T cells; Right: Cell lysates from HEK293T cells transfected with RC215382 using transfection reagent MegaTran 2.0 (Cat# [TT210002]).