

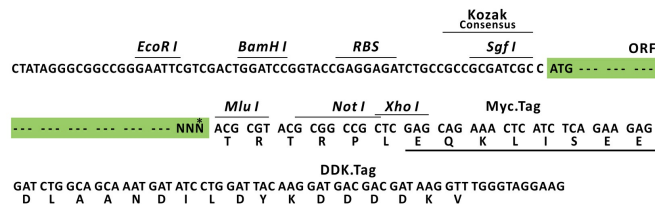
Product datasheet for RC215378L3

Claspin (CLSPN) (NM_022111) Human Tagged Lenti ORF Clone

Product data:

Product Type:	Expression Plasmids
Product Name:	Claspin (CLSPN) (NM_022111) Human Tagged Lenti ORF Clone
Tag:	Myc-DDK
Symbol:	Claspin
Mammalian Cell Selection:	Puromycin
Vector:	pLenti-C-Myc-DDK-P2A-Puro (PS100092)
E. coli Selection:	Chloramphenicol (34 ug/mL)
ORF Nucleotide Sequence:	The ORF insert of this clone is exactly the same as(RC215378).
Restriction Sites:	Sgfl-MluI
Cloning Scheme:	

Cloning sites used for ORF Shuttling:



* The last codon before the Stop codon of the ORF.

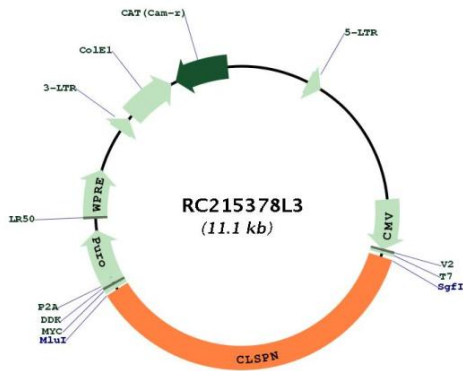
ACCN:	NM_022111
ORF Size:	4017 bp



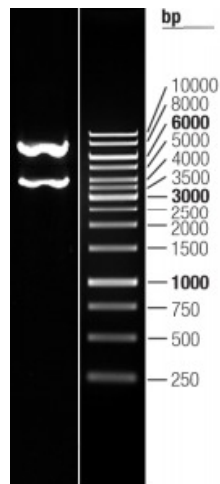
[View online »](#)

OTI Disclaimer:	The molecular sequence of this clone aligns with the gene accession number as a point of reference only. However, individual transcript sequences of the same gene can differ through naturally occurring variations (e.g. polymorphisms), each with its own valid existence. This clone is substantially in agreement with the reference, but a complete review of all prevailing variants is recommended prior to use. More info
OTI Annotation:	This clone was engineered to express the complete ORF with an expression tag. Expression varies depending on the nature of the gene.
Components:	The ORF clone is ion-exchange column purified and shipped in a 2D barcoded Matrix tube containing 10ug of transfection-ready, dried plasmid DNA (reconstitute with 100 ul of water).
Reconstitution Method:	<ol style="list-style-type: none"> 1. Centrifuge at 5,000xg for 5min. 2. Carefully open the tube and add 100ul of sterile water to dissolve the DNA. 3. Close the tube and incubate for 10 minutes at room temperature. 4. Briefly vortex the tube and then do a quick spin (less than 5000xg) to concentrate the liquid at the bottom. 5. Store the suspended plasmid at -20°C. The DNA is stable for at least one year from date of shipping when stored at -20°C.
RefSeq:	NM_022111.3
RefSeq Size:	8484 bp
RefSeq ORF:	4020 bp
Locus ID:	63967
UniProt ID:	Q9HAW4
Cytogenetics:	1p34.3
MW:	151.1 kDa
Gene Summary:	The product of this gene is an essential upstream regulator of checkpoint kinase 1 and triggers a checkpoint arrest of the cell cycle in response to replicative stress or DNA damage. The protein is also required for efficient DNA replication during a normal S phase. Multiple transcript variants encoding different isoforms have been found for this gene. [provided by RefSeq, Jun 2010]

Product images:



Circular map for RC215378L3



Double digestion of RC215378L3 using SgfI and MluI