

Product datasheet for **RC215377**

CHFR (NM_018223) Human Tagged ORF Clone

Product data:

Product Type:	Expression Plasmids
Product Name:	CHFR (NM_018223) Human Tagged ORF Clone
Tag:	Myc-DDK
Symbol:	CHFR
Synonyms:	RNF116; RNF196
Mammalian Cell Selection:	Neomycin
Vector:	pCMV6-Entry (PS100001)
E. coli Selection:	Kanamycin (25 ug/mL)



[View online »](#)

ORF Nucleotide Sequence:

>RC215377 representing NM_018223
 Red=Cloning site Blue=ORF Green=Tags(s)

TTTTGTAATACGACTCACTATAGGGCGGCCGGAATTCGTCGACTGGATCCGGTACCGAGGAGATCTGCC
 GCC**CGGATCGCC**

ATGGAGCGGCCGAGGAAGCAAGCAGTCGCCGCCGCGAGCCCTGGGACGGCTCCTGCGTCTGGGCG
 CGGAGGAGGGCGAGCCGACGTCCTCCTGAGGAAGCGGGAGTGGACCATCGGGCGGAGACGAGGTTGCGA
 CCTTCTCCTCCAGCAATAAACTGGTCTCTGGAGTCACTGTAGAATTGTAGTGGATGAAAAATCAGGT
 CAGGTGACACTGGAAGATACCAGCACCAGTGAACAGTGATTAACAAGCTGAAGGTTGTTAAGAAGCAGA
 CATGCCCTTACAGACTGGGGATGTCATCTACTTGGTGTACAGGAAGAATGAACCGGAACACAACGTGGC
 ATACCTCTATGAATCTTTAAGTAAAAGCAAGGCATGACACAAGAATCCTTTGAGATGGTGCCTTGTCTGT
 GTTGCCAGGCTGGTCTAAAACCTCTGGGATCAAGTATCCTCCACCTTGGCCTCCCAAAGTATTGTGA
 TTACAGGGTCTGGGGTGGTGGCATCTCCCTAAAGGAAGTGGTCCCTCTGTGGCAAGTGTGAAGTCTC
 CAGCTTTGCCTCAGCTCTCCAGACAGAAAGACTGCGTCTTTTGTGCTTGAACCCAGGATCAGGAG
 GATTTGGAGCCCGTGAAGAAGAAAAATGAGAGGAGATGGGACCTTGACCTGAACGGGCAGTTGTTGGTCCG
 CACAACCGGTAGAAATGCCCAAACCGTCCACGAGGACGTGAGCAGCGGCTGGGAAGCCAGACAAGAT
 GGAGGAGACGCTGACATGCATCATCTGCCAGGACCTGCTGCACGACTGCGTGAGTTTGCAGCCCTGCATG
 CACACGTTCTGCGCGGCTTGTACTCGGGCTGGATGGAGCGCTCGTCCCTGTGTCTACCTGCCGCTGTC
 CCGTGGAGCGGATCTGTAAAACCATCTCAACAACCTCGTGAAGCATACCTCATCCAGCATCCAGA
 CAAGAGTCGACAGTGAAGAAGATGTCAAAGTATGGATGCCAGGAATAAACTCAAGACATGCTGCAG
 CCCAAAGTCAGGCGGCTTTTTCTGATGAAGAAGGGAGTTCAGAGGACCTGCTGGAGCTGTCAGACGTTG
 ACAGTGAGTCTCAGACATTAGCCAGCCATACGTCGTGTGCCGCGAGTGTCTGAGTACAGAAGGCAGAG
 GGCGCAGCCTCCCACTGCCAGCACCCGAGGGCGAGCCAGGAGCCACAGGCCCTGGGGATGCACCC
 TCCACGTCGCTCAGCCTGACGACAGCAGTCCAGGATTACGTGTGCCCTCTGCAAGGAAGCCACGCCCTGT
 GCACCTGCTGTTCCAGCCATGCCGACCGGAGAGCGGAGCGGAGCAGGACCCGCGTGTGCGCCCTCA
 GCAGTGTGCGGTGCTGCTGCAGCCTTTCTGCCACCTGTACTGGGGCTGCACCCGGACCGGCTGCTACGGC
 TGCCTGGCCCGTTTTGTGAGCTCAACCTGGGTGACAAGTGTCTGGACGGCTGCTGAACAACAACAGCT
 ACGAGTCAGACATCCTGAAGAATTACCTGGCAACCAGAGGTTTGACATGGAAAAACATGTTGACCGAGAG
 CCTCGTGGCTCTCAGCGGGGAGTGTCTGCTGTCTGATTACAGAGTCACGGGAGACCCGTTCTGTGT
 TACTGCTGTGGCTGCGCAGCTTCCGTGAGCTGACCTATCAGTATCGGCAGAACATTCCTGCTCCGAGT
 TGCCAGTGGCCGTAACATCCCGTCTGACTGCTACTGGGCGCGTAACTGCCGCACTCAGGTGAAAGTCA
 CCACGCCATGAAATTCATCATCTGTGAACAGACAAGGTTCAAAAAAC

ACGCGTACGCGGCCGCTCGAGCAGAAACTCATCTCAGAAGAGGATCTGGCAGCAAATGATATCCTGGATT
 ACAAGGATGACGACGATAAGGTTTAA

Protein Sequence:

>RC215377 representing NM_018223
 Red=Cloning site Green=Tags(s)

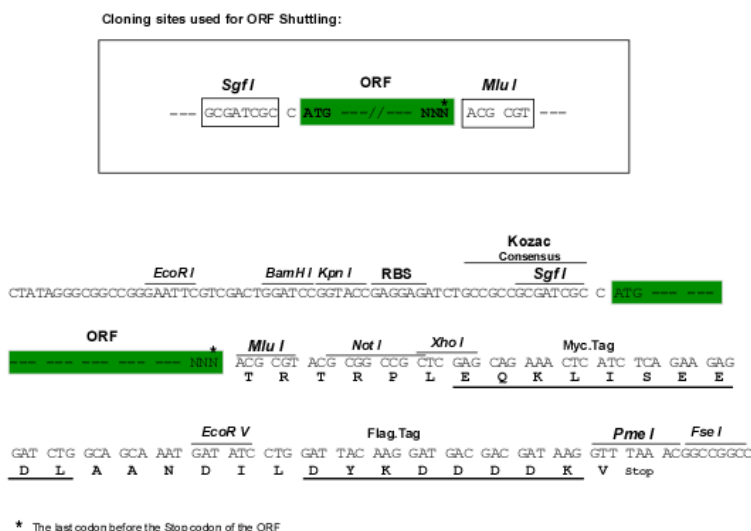
MERPEEGKQSPPPQPWGRLRLGAEEGEPHLLRKREWTIGRRRGCDLFFPSNKLVS GDHCRIVVDEKSG
 QVTLEDSTSGTVINKLKVVKKQTCPLQTDVVIYLVYRKNEPEHNVAYLYESLSEKQGMTQESFEMVPC
 VAQAGLKLLGSSDPPTLASQSIVITGSGGGGISPKGSGPSVASDEVSSFFASALPDRKTASFSSLEPQDQ
 DLEPVKKMKMRGDGLDLNGQLLVAQPRRNAQTVHEDVRAAAGKPKDMEETLTCIICQDLLHDCVSLQPCM
 HTFCAACYSGWMERSSLCPTCRCPVERICKNHILNNLVEAYLIQHPDKSRSEEDVQSM DARNKITQDMLQ
 PKVRRSFDEEGSSEDLLELSDVDESSDISQPYVVCRCPEYRRQAAQPPHCPAPEGEPGAPQALGDAP
 STSVSLTTAVQDYVCPPLQGSALCTCCFPMPDRRAEREQDPRVAPQQCAVCLQPFCHLYWGCTRTGCGY
 CLAPFCELNLDGKCLDGLVNNNSYESDILKNYLATRGLTWKNMLTESLVALQRGVFLLSDYRVTDGTVLC
 YCCGLRSFRELTYQRQNI PASELPVAVTSRPDCYWGRNCR TQVKAHAMKFNHICEQTRFKN

TRTRPLEQKLISEEDLAANDILDYKDDDDKV

Chromatograms: https://cdn.origene.com/chromatograms/mk8070_c03.zip

Restriction Sites: SgfI-MluI

Cloning Scheme:



ACCN: NM_018223

ORF Size: 1869 bp

OTI Disclaimer: The molecular sequence of this clone aligns with the gene accession number as a point of reference only. However, individual transcript sequences of the same gene can differ through naturally occurring variations (e.g. polymorphisms), each with its own valid existence. This clone is substantially in agreement with the reference, but a complete review of all prevailing variants is recommended prior to use. [More info](#)

OTI Annotation: This clone was engineered to express the complete ORF with an expression tag. Expression varies depending on the nature of the gene.

Components: The ORF clone is ion-exchange column purified and shipped in a 2D barcoded Matrix tube containing 10ug of transfection-ready, dried plasmid DNA (reconstitute with 100 ul of water).

- Reconstitution Method:**
1. Centrifuge at 5,000xg for 5min.
 2. Carefully open the tube and add 100ul of sterile water to dissolve the DNA.
 3. Close the tube and incubate for 10 minutes at room temperature.
 4. Briefly vortex the tube and then do a quick spin (less than 5000xg) to concentrate the liquid at the bottom.
 5. Store the suspended plasmid at -20°C. The DNA is stable for at least one year from date of shipping when stored at -20°C.

RefSeq: [NM_018223.2](#), [NP_060693.2](#)

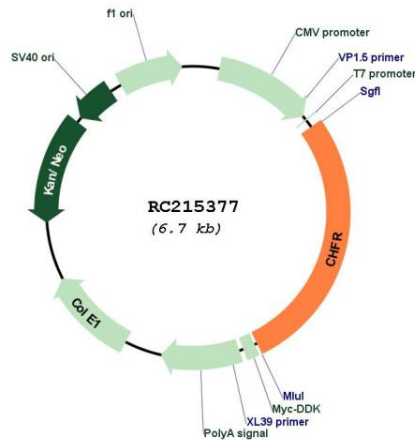
RefSeq Size: 3138 bp

RefSeq ORF: 1872 bp

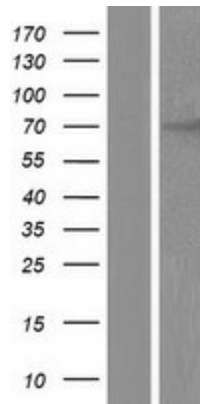
Locus ID: 55743
UniProt ID: [Q96EP1](#)
Cytogenetics: 12q24.33
Domains: FHA, RING
Protein Families: Druggable Genome
MW: 69 kDa

Gene Summary: This gene encodes an E3 ubiquitin-protein ligase required for the maintenance of the antepause checkpoint that regulates cell cycle entry into mitosis and, therefore, may play a key role in cell cycle progression and tumorigenesis. The encoded protein has an N-terminal forkhead-associated domain, a central RING-finger domain, and a cysteine-rich C-terminal region. Alternatively spliced transcript variants that encode different protein isoforms have been described. [provided by RefSeq, Mar 2014]

Product images:



Circular map for RC215377



Western blot validation of overexpression lysate (Cat# [LY413203]) using anti-DDK antibody (Cat# [TA50011-100]). Left: Cell lysates from untransfected HEK293T cells; Right: Cell lysates from HEK293T cells transfected with RC215377 using transfection reagent MegaTran 2.0 (Cat# [TT210002]).