

Product datasheet for **RC215372**

FADS6 (NM_178128) Human Tagged ORF Clone

Product data:

Product Type: Expression Plasmids
Product Name: FADS6 (NM_178128) Human Tagged ORF Clone
Tag: Myc-DDK
Symbol: FADS6
Synonyms: FP18279
Mammalian Cell Selection: Neomycin
Vector: pCMV6-Entry (PS100001)
E. coli Selection: Kanamycin (25 ug/mL)
ORF Nucleotide Sequence: >RC215372 representing NM_178128
Red=Cloning site Blue=ORF Green=Tags(s)

TTTTGTAATACGACTCACTATAGGGCGGCCGGAATTCGTCGACTGGATCCGGTACCGAGGAGATCTGCC
GCC**CGATCGCC**

ATGGAACCCACGGAGCCCATGGAACCTACGGAGCCCATGGAACCGCGCGGAGCGCGCACCGTGGGGCG
AGGCGTCTGCGGGAGCTGGAGGTGCTGGTGCAGGACGTGGTGAGGACGAGCTCCTGGTGGGAGCGCCA
CGGCGTGGACTGCGCCATCCTCGCGCTCAGCCTTTCCGCTTGCCGGCAGGCTTCTGTGCCTGCGCTGG
GAGAATGCCCTGGTCTTTGCATCCGGCATACCATCTTGGGTGTGTGCCACTACACTACTGTCAAGG
GCAGCCACTGGCCACTCATGGGGCCCTCACCGAGTCCAACCGCTGGAGCAAGATCTGGTGTCTTTCTT
TGTGGAGGTGTGCACAGCCTTCACTGCAGAGCACGCCACGCATGGGCACGTCAAGATGCACCATGCCTAC
ACCAACGTGGTGGGCTGGGGGACTCCAGCACGTGGAGGCTGCCTTGCCTCAACCGCTATGTCTACATGT
TCCTTGCTCCTTTCTCCTCCCCATCGCCACTCCACTGGTGGTGTGCGAGCGGCTGAGGAAGGTGGAGCT
CGGGACAGCCCTGCGGACGCTGGCCCTGATTTCTTGGGCTTTATTCTCACTACTGGTGTCTCTGAAC
GTGTCAGGCTTCAAGAACCCAGCTCAGCCCTGGGCTGCATGTTCTCACCAGATCCCTGTTGGCCACC
CCTACCTCCACGTCAACATCTTCCAGCACATCGGACTGCCATGTTCTCCCGGACAACAAGCCCGTGC
GATTCACATGATGAGCCTGGGGGTGCTTAACCTGGCCCGGCTGCCGTGTGGACTGGCGTTTCGGCCAC
TCGATCATCAGTGCATGTGGAACACCATCTATCCCCAGGCTCTCTGATAACATGTGCCTGAAGGTGA
AGCCCGTGGTGTCCAGTTCCTACGTGAGAAGCAGCTACCGTACAACGAGGACTCATACCTGGCTCGCTT
CCAGCTGTTTCTCCGTCGCTATGAGGAATTCATGGTGCAGGCCCCACCCATCACTGAGCTTGTGGGGCTG

ACGCGTACGCGGCCGCTCGAGCAGAACTCATCTCAGAAGAGGATCTGGCAGCAATGATATCCTGGATT
ACAAGGATGACGACGATAAGGTTTAA



[View online »](#)

Protein Sequence: >RC215372 representing NM_178128
 Red=Cloning site Green=Tags(s)

MEPTPEMEPTPEMEPARSAHRGGEALLRELEVLVQDVVRTSSWVERHGVDCAILALSLFALPAGFLCLRW
 ENALVFASGITILGVCHYTLTVKGSHLATHGALTESKRWSKIWLLFFVEVCTAFTAETHATHGHVMMHHAY
 TNVVGLGDSSTWRLPCLNRYVYMFAPFLLPATPLVAVERLRKVELGTALRTLALISGLYSHYWLLLN
 VSGFKNPSSALGCMFLTRSLLAHPYLHVNIHQHIGLPMFSRDNKPRRIHMMSLGVNLARLPVLDWAFGH
 SIIISCHVEHHLFPRLSDNMCLKVKPVVSQFLREKQLPYNEDSYLARFQLFLRRYEEFMVQAPPITELVGL

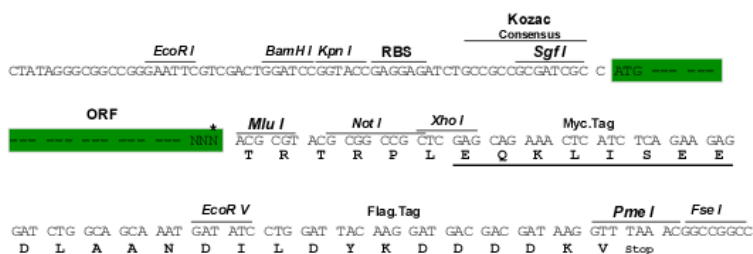
TRTRPLEQKLISEEDLAANDILDYKDDDDKV

Chromatograms: https://cdn.origene.com/chromatograms/mk8101_e12.zip

Restriction Sites: SgfI-MluI

Cloning Scheme:

Cloning sites used for ORF Shuttling:



* The last codon before the Stop codon of the ORF

ACCN: NM_178128

ORF Size: 1050 bp

OTI Disclaimer: The molecular sequence of this clone aligns with the gene accession number as a point of reference only. However, individual transcript sequences of the same gene can differ through naturally occurring variations (e.g. polymorphisms), each with its own valid existence. This clone is substantially in agreement with the reference, but a complete review of all prevailing variants is recommended prior to use. [More info](#)

OTI Annotation: This clone was engineered to express the complete ORF with an expression tag. Expression varies depending on the nature of the gene.

Components: The ORF clone is ion-exchange column purified and shipped in a 2D barcoded Matrix tube containing 10ug of transfection-ready, dried plasmid DNA (reconstitute with 100 ul of water).

Reconstitution Method:

1. Centrifuge at 5,000xg for 5min.
2. Carefully open the tube and add 100ul of sterile water to dissolve the DNA.
3. Close the tube and incubate for 10 minutes at room temperature.
4. Briefly vortex the tube and then do a quick spin (less than 5000xg) to concentrate the liquid at the bottom.
5. Store the suspended plasmid at -20°C. The DNA is stable for at least one year from date of shipping when stored at -20°C.

RefSeq: [NM_178128.4](#)

RefSeq Size: 2052 bp

RefSeq ORF: 1107 bp

Locus ID: 283985

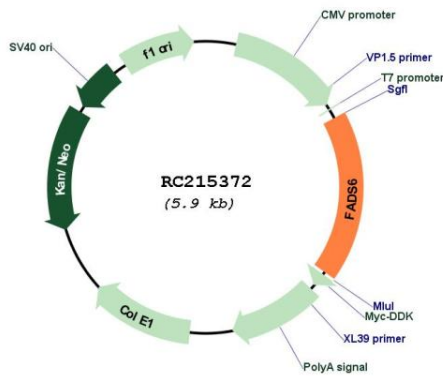
UniProt ID: [Q8N9I5](#)

Cytogenetics: 17q25.1

Protein Families: Transmembrane

MW: 39.8 kDa

Product images:



Circular map for RC215372