

Product datasheet for **RC215371**

PCTAIRE3 (CDK18) (NM_212503) Human Tagged ORF Clone

Product data:

Product Type:	Expression Plasmids
Product Name:	PCTAIRE3 (CDK18) (NM_212503) Human Tagged ORF Clone
Tag:	Myc-DDK
Symbol:	PCTAIRE3
Synonyms:	PCTAIRE; PCTAIRE3; PCTK3
Mammalian Cell Selection:	Neomycin
Vector:	pCMV6-Entry (PS100001)
E. coli Selection:	Kanamycin (25 ug/mL)



[View online »](#)

ORF Nucleotide Sequence:

>RC215371 representing NM_212503
 Red=Cloning site Blue=ORF Green=Tags(s)

TTTTGTAATACGACTCACTATAGGGCGGCCGGAATTCGTCGACTGGATCCGGTACCGAGGAGATCTGCC
 GCC**CGGATCGCC**

ATGATCATGAACAAGATGAAGAACCTTTAAGCGCCGTTTCTCCCTGTCAGTGCCCCGACTGAGACCATTG
 AAGAATCCTTGGCTGAATTCACGGAGCAATTAACCAGCTCCACAACCGCGGAATGAGAACTTGCAGCT
 CGGTCTCTTGGCAGAGACCCCCCGCAGGAGTGCAGCACCTTCTCCCAACAGACAGCGGGAGGAGCCG
 GGGCAGCTCTCCCTGGCGTGCAGTTCCAGCGCGGCAGAACAGCGCCGCTTCTCCATGGAGGTGAGGG
 CCTCTGGAGCTTGCCCCGGCAGGTGGCAGGATGCACGCACAAGGGTGTGCACAGGAGGGCAGCTGCCTT
 ACAGCCAGACTTTGACGTGAGCAAGAGGCTCTCTGCCCATGGATATCCGCCTGCCCAAGGAATTCCTA
 CAGAAGCTACAGATGGAGAGCCAGATCTGCCAAGCCGCTCAGCCGCATGTCCCGCCGGGCTCCCTGT
 CAGACATTGGCTTTGGAAACTGAAACATACGTGAAACTGGACAACTGGGAGAGGGCACCTATGCCAC
 AGTCTTCAAAGGGCGCAGCAAACGACGGAGAACCTTGTGCCCTGAAAGAGATCCGGCTGGAGCAGGAG
 GAGGGAGCGCCCTGCACTGCCATCCGAGAGGTGTCTCTGCTGAAGAACCTGAAGCAGCCAAATTTGTGA
 CCCTGCATGACCTCATCCACACAGATCGGTCCCTCACCTGGTGTGTTGAGTACCTGGACAGTGACCTGAA
 GCAGTATCTGGACCACTGTGGAACTCATGAGCATGCACAACGTCAAGATTTTCATGTTCCAGCTGCTC
 CGGGGCTCGCCTACTGTACCACCGCAAGATCTGCACCGGGACCTGAAGCCCCAGAACCTGCTCATCA
 ACGAGAGGGGGAGCTGAAGCTGGCCGACTTTGGACTGGCCAGGGCAAGTCAGTGCCCAAAAGACTTA
 CTCCAATGAGGTGGTACCCTGTGGTACAGGCCCCCGATGTGCTGTGGGATCCACAGAGTACTCCACC
 CCCATTGATATGTGGGGCTGGGCTGCATCCACTACGAGATGGCCACAGGGAGGCCCTCTCCCGGGCT
 CCACAGTCAAGGAGGAGCTGCACCTCATCTTTCGCCTCCTCGGGACCCCAAGAGAGAGATGGCCCCG
 CGTGACCGCCTTCTCTGAGTCCGCACCTACAGCTTCCCTGCTACCTCCCGCAGCCGCTCATCAACCAC
 GCGCCAGGTTGGATACGGATGGCATCCACCTCCTGAGCAGCCTGCTCCTGTATGAATCCAAGAGTCGCA
 TGTGAGCAGAGGCTGCCCTGAGTCACTCTACTCCGGTCTCTGGGAGAGCGTGTGCACCAGCTTGAAGA
 CACTGCCTCCATCTTCTCCCTGAAGGAGATCCAGCTCCAGAAGGACCCAGGCTACCGAGGCTTGGCTTC
 CAGCAGCCAGGACGAGGGAAGAACAGCGGCAGAGCATCTTC

ACGCGTACGCGGCCGCTCGAGCAGAACTCATCTCAGAAGAGGATCTGGCAGCAAATGATATCTGGATT
 ACAAGGATGACGACGATAAGGTTTAA

Protein Sequence:

>RC215371 representing NM_212503
 Red=Cloning site Green=Tags(s)

MIMNKMKNFKRRFSLVSPRTETIEESLAEFTEQFNQLHNRNENLQLGPLGRDPPQECSTFSPTDSGEEP
 GQLSPGVQFQRRQNQRRFSMEVRASGALPRQVAGCTHKGVHRRRAALQPDFDVSKRLSLPMDIRLPQEF
 QKLQMESPDLPKPLSRMSRRASLSDIGFKLETYVKLDKLGEGTYATVFKGRSKLTENLVALKEIRLEHE
 EGAPCTAIREVSLKLNKLANIVTLHDLIHTDRSLTLVFEYLDSDLKQYLDHCGNLMMSHNKIFMFQLL
 RGLAYCHHRKILHRDLKPQNLLINERGELKLADFLARAKSVPTKYSNEVVTLWYRPPDVLGSTEYST
 PIDMWVGCIIHYEMATGRPLFPGSTVKEELHLIFRLLGTPTEETWPGVTAFASEFRYSFPCYLPQPLINH
 APRLDTDGIHLLSSLLLYESKSRMSAEALSHSYFRSLGERVHQLDITASIFSLKEIQLQKDPGYRGLAF
 QQPGRGKNRRQSF

TRTRPLEQKLISEEDLAANDILDYKDDDDKV

Chromatograms:

https://cdn.origene.com/chromatograms/mk8063_h12.zip

Restriction Sites:

SgfI-MluI

Cloning Scheme:


ACCN: NM_212503

ORF Size: 1512 bp

OTI Disclaimer: The molecular sequence of this clone aligns with the gene accession number as a point of reference only. However, individual transcript sequences of the same gene can differ through naturally occurring variations (e.g. polymorphisms), each with its own valid existence. This clone is substantially in agreement with the reference, but a complete review of all prevailing variants is recommended prior to use. [More info](#)

OTI Annotation: This clone was engineered to express the complete ORF with an expression tag. Expression varies depending on the nature of the gene.

Components: The ORF clone is ion-exchange column purified and shipped in a 2D barcoded Matrix tube containing 10ug of transfection-ready, dried plasmid DNA (reconstitute with 100 ul of water).

Reconstitution Method:

1. Centrifuge at 5,000xg for 5min.
2. Carefully open the tube and add 100ul of sterile water to dissolve the DNA.
3. Close the tube and incubate for 10 minutes at room temperature.
4. Briefly vortex the tube and then do a quick spin (less than 5000xg) to concentrate the liquid at the bottom.
5. Store the suspended plasmid at -20°C. The DNA is stable for at least one year from date of shipping when stored at -20°C.

RefSeq: [NM_212503.2](#), [NP_997668.1](#)

RefSeq Size: 3165 bp

RefSeq ORF: 1515 bp

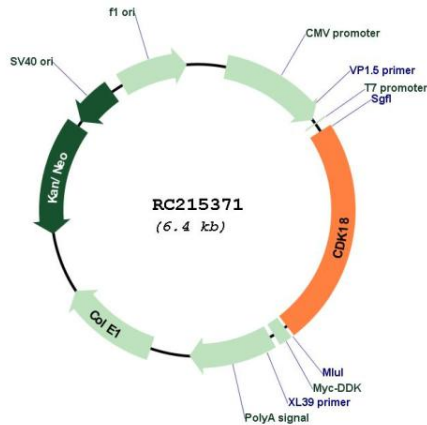
Locus ID: 5129

UniProt ID: [Q07002](#)

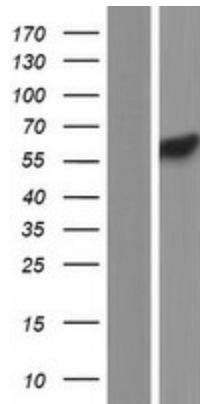
Cytogenetics: 1q32.1

Protein Families: Druggable Genome, Protein Kinase
MW: 57.4 kDa
Gene Summary: May play a role in signal transduction cascades in terminally differentiated cells. [UniProtKB/Swiss-Prot Function]

Product images:



Circular map for RC215371



Western blot validation of overexpression lysate (Cat# [LY403955]) using anti-DDK antibody (Cat# [TA50011-100]). Left: Cell lysates from untransfected HEK293T cells; Right: Cell lysates from HEK293T cells transfected with RC215371 using transfection reagent MegaTran 2.0 (Cat# [TT210002]).