

## Product datasheet for **RC215370**

### **BTNL8 (NM\_001040462) Human Tagged ORF Clone**

#### **Product data:**

Product Type:	Expression Plasmids
Product Name:	BTNL8 (NM_001040462) Human Tagged ORF Clone
Tag:	Myc-DDK
Symbol:	BTNL8
Synonyms:	BTN9.2
Mammalian Cell Selection:	Neomycin
Vector:	pCMV6-Entry (PS100001)
E. coli Selection:	Kanamycin (25 ug/mL)



[View online »](#)

**ORF Nucleotide Sequence:**

>RC215370 representing NM\_001040462  
 Red=Cloning site Blue=ORF Green=Tags(s)

TTTTGTAATACGACTCACTATAGGGCGGCCGGAATTCGTCGACTGGATCCGGTACCGAGGAGATCTGCC  
 GCC**CGGATCGCC**

ATGGCTCTCATGCTCAGTTTGGTTCTGAGTCTCCTCAAGCTGGGATCAGGGCAGTGGCAGGTGTTTGGGC  
 CAGACAAGCCTGTCCAGGCCTTGGTGGGGAGGACGCAGCATTCTCCTGTTTCCTGTCTCCTAAGACCAA  
 TGCAGAGGCCATGGAAGTGCAGTTCTTCCAGGGCCAGTTCTCTAGCGTGGTCCACCTCTACAGGGACGGG  
 AAGACCAGCCATTTATGCAGATGCCACAGTATCAAGGCAGGACAAAAGTGGTGAAGATTCTATTGCGG  
 AGGGGCGCATCTCTGAGGCTGAAAACATTACTGTGTGGATGCTGGCCTCTATGGGTGCAGGATTAG  
 TTCCAGTCTTACTACCAGAAGGCCATCTGGGAGCTACAGGTGTCAGCACTGGGCTCAGTTCCTCTCATT  
 TCCATCACGGGATATGTTGATAGAGACATCCAGCTACTCTGTAGTCTCGGGCTGGTCCCGCGGCCA  
 CAGCGAAGTGAAAGTCCACAAGGACAGGATTTGTCCACAGACTCCAGGACAAACAGAGACATGCATGG  
 CCTGTTTGTATGTGGAGATCTCTGACCGTCCAAGAGAAGCCGGGAGCATATCCTGTTCCATGCGGCAT  
 GCTCATCTGAGCCGAGAGGTGGAATCCAGGGTACAGATAGGAGATACCTTTTTCGAGCCTATATCGTGGC  
 ACCTGGCTACAAAGTACTGGAATACTCTGCTGTGGCCTATTTTTGGCATTGTTGGACTGAAGATTTT  
 CTTCTCCAAATCCAGTGGAAAATCCAGGCGGAACTGGACTGGAGAAGAAAGCACGGACAGGCAGAAATG  
 AGAGACGCCCCGAAACACGCAGTGGAGGTGACTCTGGATCCAGAGACGGCTCACCCGAAGCTCTGCGTTT  
 CTGATCTGAAAATGTAACCCATAGAAAAGCTCCCCAGGAGGTGCCTCACTCTGAGAAGAGATTTACAAG  
 GAAGAGTGTGGTGGCTTCTCAGAGTTTCCAAGCAGGAAACATTACTGGGAGGTGGACGGAGGACACAAT  
 AAAAGTGGCGCTGGGAGTGTCCGGGATGATGTGGACAGGAGGAAGGAGTACGTGACTTTGTCTCCCG  
 ATCATGGGTACTGGTCCCTCAGACTGAATGGAGAACATTTGTATTTACATTAATAATCCCGTTTTATCAG  
 CGTCTTCCCAGGACCCACCTACAAAAATAGGGGTCTTCTGGACTATGAGTGTGGGACCATCTCCTTC  
 TTCAACATAAATGACCAGTCCCTTATTTATACCCTGACATGTCGGTTTGAAGGCTTATTGAGCCCTACA  
 TTGAGTATCCGTCTATAATGAGCAAAATGGAATCCCATAGTCTGCCCAGTACCCAGGAATCAGA  
 GAAAGAGGCTCTTGCAAAGGGCTCTGCAATCCAGAGACAAGCAACAGTGAATCCTCTCACAGGCA  
 ACCACGCCCTTCTCCCGGGTGAATG

**ACGCGT**ACGCGGCCGCTCGAGCAGAACTCATCTCAGAAGAGGATCTGGCAGCAAATGATATCCTGGATT  
 ACAAGGATGACGACGATAAGGTTTAA

**Protein Sequence:**

>RC215370 representing NM\_001040462  
 Red=Cloning site Green=Tags(s)

MALMLSLVLSLLKLGSGQWQVFGPDKPVQALVGEDAASFCLSPKTNAEAMEVRFRRQFSSVVHLYRDLG  
 KDQPFMQMPQYQGRKLVKDSIAEGRISLRLENITVLDAGLYGCRISQSYQKAIWELQVSALGSVPLI  
 SITGYVDRDIQLLCQSSWFPRPTAKWKGPQGDLSTDSRTNRDMHGLFDVEISLTVQENAGSISCSMRH  
 AHL SREVESRVQIGDTFFEPISWHLATKVLGILCCGLFFGIVGLKIFFSKFQWKIQAELEDWRRKHGQAE  
 RDARKHAVEVTLDPETAHPKLCVSDLKTVTHRKAQEVPHSEKRFTRKSVVASQSFQAGKHYWEVDGGHN  
 KRWRVGVCRDDVDRRKEYVTLSPDHGYWVLRNLEHL YFTLNPRFISVFPRTPTKIGVFLDYECGTISF  
 FNINDQSLIYTLTCRFEGLLRPYIEYPSYNEQNGTPIVICPVTQESEKEASWQRASAI PETSNSSESSQA  
 TTPFLPRGEM

**TRTRPLEQKLI**SEEDLAANDILDYKDDDDKV

**Chromatograms:**

[https://cdn.origene.com/chromatograms/mk8005\\_b11.zip](https://cdn.origene.com/chromatograms/mk8005_b11.zip)

**Restriction Sites:**

Sgfl-MluI

**Cloning Scheme:**


**ACCN:** NM\_001040462

**ORF Size:** 1500 bp

**OTI Disclaimer:** The molecular sequence of this clone aligns with the gene accession number as a point of reference only. However, individual transcript sequences of the same gene can differ through naturally occurring variations (e.g. polymorphisms), each with its own valid existence. This clone is substantially in agreement with the reference, but a complete review of all prevailing variants is recommended prior to use. [More info](#)

**OTI Annotation:** This clone was engineered to express the complete ORF with an expression tag. Expression varies depending on the nature of the gene.

**Components:** The ORF clone is ion-exchange column purified and shipped in a 2D barcoded Matrix tube containing 10ug of transfection-ready, dried plasmid DNA (reconstitute with 100 ul of water).

**Reconstitution Method:**

1. Centrifuge at 5,000xg for 5min.
2. Carefully open the tube and add 100ul of sterile water to dissolve the DNA.
3. Close the tube and incubate for 10 minutes at room temperature.
4. Briefly vortex the tube and then do a quick spin (less than 5000xg) to concentrate the liquid at the bottom.
5. Store the suspended plasmid at -20°C. The DNA is stable for at least one year from date of shipping when stored at -20°C.

**RefSeq:** [NM\\_001040462.3](#)

**RefSeq Size:** 2052 bp

**RefSeq ORF:** 1503 bp

**Locus ID:** 79908

**UniProt ID:** [Q6UX41](#)

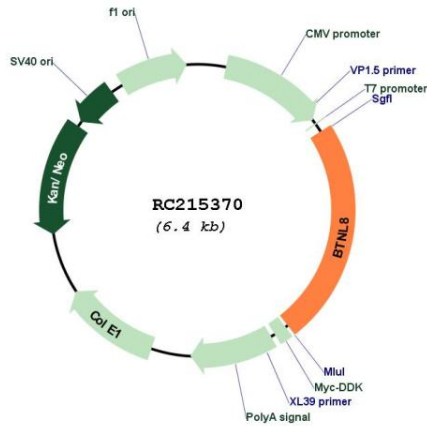
**Cytogenetics:** 5q35.3

**Protein Families:** Druggable Genome, Transmembrane

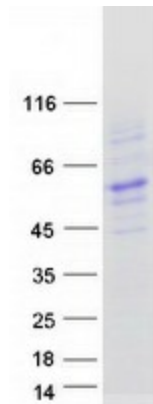
**MW:** 56.6 kDa

**Gene Summary:** May stimulate primary immune response. Acts on T-cell stimulated sub-optimally through the TCR/CD3 complex stimulating their proliferation and cytokine production.[UniProtKB/Swiss-Prot Function]

**Product images:**



Circular map for RC215370



Coomassie blue staining of purified BTNL8 protein (Cat# [TP315370]). The protein was produced from HEK293T cells transfected with BTNL8 cDNA clone (Cat# RC215370) using MegaTran 2.0 (Cat# [TT210002]).