

Product datasheet for RC215365

MOK protein kinase (MOK) (NM_014226) Human Tagged ORF Clone

Product data:

Product Type:	Expression Plasmids
Product Name:	MOK protein kinase (MOK) (NM_014226) Human Tagged ORF Clone
Tag:	Myc-DDK
Symbol:	MOK protein kinase
Synonyms:	RAGE; RAGE-1; RAGE1; STK30
Mammalian Cell Selection:	Neomycin
Vector:	pCMV6-Entry (PS100001)
E. coli Selection:	Kanamycin (25 ug/mL)
ORF Nucleotide Sequence:	>RC215365 representing NM_014226 Red=Cloning site Blue=ORF Green=Tags(s)

TTTTGTAATACGACTCACTATAGGGCGGCCGGAATTCGTCGACTGGATCCGGTACCGAGGAGATCTGCC
GCC**CGATCGCC**

ATGAAGAACTATAAGCAATTGGCAAAATAGGAGAGGGAACGTTTTCTGAAGTTATGAAGATGCAAAGCC
TGAGAGATGGAACTACTATGCATGTAACAAATGAAGCAGCGCTTTGAAAGTATTGAGCAAGTCAACAA
CCTACGAGAGATCCAAGCACTGAGGCGCCTGAATCCGCACCCAAACATTCTTATGTTGCATGAAGTGTT
TTTGACAGAAAATCTGGTCTCTTGCCTAATATGTGAACCTATGGACATGAATATTTATGAGCTAATAC
GAGGGAGAAGATACCCATTATCAGAAAAAAAATTATGCACTATATGTACCAGTTATGTAAGTCCCTGGA
TCATATTCACAGAAATGGAATATTTACAGAGATGTAACCAGAAAATACTAATAAAGCAGGATGTC
CTGAAATTAGGGGACTTTGGCTCCTGCCGAGTGTCTATTCCAAGCAGCCGTACACGGAATACATCTCCA
CCCGCTGGTACCGGGCCCGGAGTGTCTCCTCACTGATGGGTTCTACACGTACAAGATGGACCTGTGGAG
CGCCGGCTGTGTGTTCTACGAGATCGCCAGTCTGCAGCCCTCTTTCTGGAGTAAATGAACTGGACCAA
ATCTCAAAAATCCACGATGTCTCGGCACACCCGCTCAGAAGATCCTCACCAAGTTCAAACAGTCGAGAG
CTATGAATTTGATTTTCCTTTAAAAAGGGATCAGGAATACCTCTACTAACAACCAATTTGCCCCACA
ATGCCTCTCCCTCCTGCACGCAATGGTGGCCTATGATCCCGATGAGAGAATCGCCGCCACCAGGCCCTG
CAGCACCCCTACTTCCAAGAACAGAGAAAACAGAGAAGCGGGCTCTGGGCAGCCACAGAAAAGCTGGCT
TTCCGGAGCACCCCTGTGGCACCGGAACCACTCAGTAACAGCTGCCAGATTTCCAAGGAGGGCAGAAAAGCA
GAAACAGTCCCTAAAGCAAGAGGAGGACCGTCCCAAGAGACGAGGACCGCCTATGTCATGGAAGTCCCG
AACTAAAGCTTTCCGGAGTGGTCACTGTCGCTTACTCCAGCCCCACGCTGCAGTCCGTGCTTGGAT
CTGGAACAAATGGAAGAGTGCCGGTGTGAGACCCCTGAAGTGCATCCCTGCGAGCAAGAAGACAGATCC
GCAGAAGGACCTTAAGCTGCCCGCAGCAGTGTGCCTGCCACCATAGTGCAGAAAGCGGAAGA

ACGCGTACGCGGCCGCTCGAGCAGAACTCATCTCAGAAGAGGATCTGGCAGCAAATGATATCCTGGATT
ACAAGGATGACGACGATAAGGTTTAA



[View online »](#)

Protein Sequence: >RC215365 representing NM_014226
Red=Cloning site Green=Tags(s)

MKNYKAIGKIGEGTFSEVMKMQSLRDGNYYACKQMQRFESEIQVNNLREIQALRRLNPHNMLLHEVV
 FDRKSGSLALICELMDMNIYELIRGRRYPLSEKKIMHYMYQLCKSLDHIHRNGIFHRDVKPENILIKQDV
 LKLGDFGSCRSVYSKQPYTEYISTRWYRAPECLLDGFTYTKMDLWSAGCVFYEIASLQPLFPGVNELDQ
 ISKIHDVIGTPAQKILTKFKQSRAMNDFPFKKGSGIPLLTNLSPOCLSLHAMVAYDPDERIAAHQAL
 QHPYFQEQRKTEKRALGSHRKAGFPEHPVAPEPLSNQCISKEGRKQKQSLKQEEDRPKRRGPAYVMELP
 KKLKLSGVVRLSSYSSPTLQSVLGSSTNGRVPVLRPLKCIIPASKKTDPPQKDLKPAPQQCRLPTIVRKGGR

TRTRPLEQKLISEEDLAANDILDYKDDDDKV

Chromatograms: https://cdn.origene.com/chromatograms/mg4161_g01.zip

Restriction Sites: SgfI-MluI

Cloning Scheme:



ACCN: NM_014226

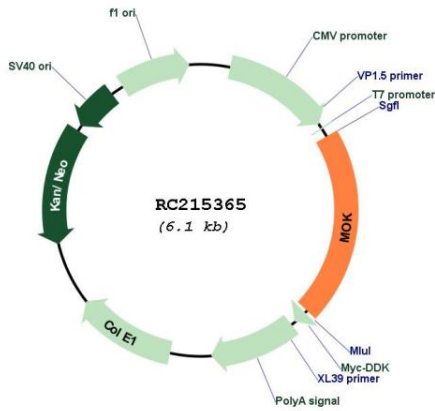
ORF Size: 1257 bp

OTI Disclaimer: Due to the inherent nature of this plasmid, standard methods to replicate additional amounts of DNA in E. coli are highly likely to result in mutations and/or rearrangements. Therefore, OriGene does not guarantee the capability to replicate this plasmid DNA. Additional amounts of DNA can be purchased from OriGene with batch-specific, full-sequence verification at a reduced cost. Please contact our customer care team at custsupport@origene.com or by calling 301.340.3188 option 3 for pricing and delivery.

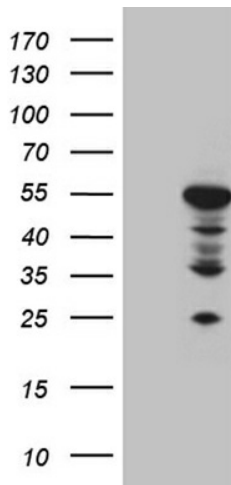
The molecular sequence of this clone aligns with the gene accession number as a point of reference only. However, individual transcript sequences of the same gene can differ through naturally occurring variations (e.g. polymorphisms), each with its own valid existence. This clone is substantially in agreement with the reference, but a complete review of all prevailing variants is recommended prior to use. [More info](#)

OTI Annotation:	This clone was engineered to express the complete ORF with an expression tag. Expression varies depending on the nature of the gene.
Components:	The ORF clone is ion-exchange column purified and shipped in a 2D barcoded Matrix tube containing 10ug of transfection-ready, dried plasmid DNA (reconstitute with 100 ul of water).
Reconstitution Method:	<ol style="list-style-type: none">1. Centrifuge at 5,000xg for 5min.2. Carefully open the tube and add 100ul of sterile water to dissolve the DNA.3. Close the tube and incubate for 10 minutes at room temperature.4. Briefly vortex the tube and then do a quick spin (less than 5000xg) to concentrate the liquid at the bottom.5. Store the suspended plasmid at -20°C. The DNA is stable for at least one year from date of shipping when stored at -20°C.
RefSeq:	NM_014226.3
RefSeq Size:	1954 bp
RefSeq ORF:	1260 bp
Locus ID:	5891
UniProt ID:	Q9UQ07
Cytogenetics:	14q32.31
Domains:	pkinase, TyrKc, S_TKc
Protein Families:	Druggable Genome, Protein Kinase
MW:	47.8 kDa
Gene Summary:	This gene belongs to the MAP kinase superfamily. The gene was found to be regulated by caudal type transcription factor 2 (Cdx2) protein. The encoded protein, which is localized to epithelial cells in the intestinal crypt, may play a role in growth arrest and differentiation of cells of upper crypt and lower villus regions. Multiple alternatively spliced transcript variants encoding different isoforms have been observed for this gene. [provided by RefSeq, Dec 2012]

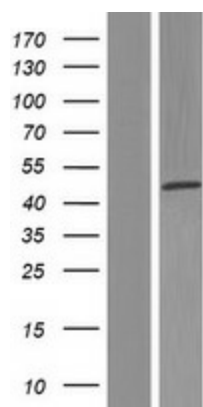
Product images:



Circular map for RC215365



HEK293T cells were transfected with the pCMV6-ENTRY control (Cat# [PS100001], Left lane) or pCMV6-ENTRY RAGE (Cat# RC215365, Right lane) cDNA for 48 hrs and lysed. Equivalent amounts of cell lysates (5 ug per lane) were separated by SDS-PAGE and immunoblotted with anti-RAGE (Cat# [TA810865])(1:2000). Positive lysates [LY415417] (100ug) and [LC415417] (20ug) can be purchased separately from OriGene.



Western blot validation of overexpression lysate (Cat# [LY415417]) using anti-DDK antibody (Cat# [TA50011-100]). Left: Cell lysates from untransfected HEK293T cells; Right: Cell lysates from HEK293T cells transfected with RC215365 using transfection reagent MegaTran 2.0 (Cat# [TT210002]).