

## Product datasheet for **RC215362**

### GRB7 (NM\_005310) Human Tagged ORF Clone

#### Product data:

Product Type:	Expression Plasmids
Product Name:	GRB7 (NM_005310) Human Tagged ORF Clone
Tag:	Myc-DDK
Symbol:	GRB7
Mammalian Cell Selection:	Neomycin
Vector:	pCMV6-Entry (PS100001)
E. coli Selection:	Kanamycin (25 ug/mL)



[View online »](#)

**ORF Nucleotide Sequence:**

>RC215362 representing NM\_005310  
 Red=Cloning site Blue=ORF Green=Tags(s)

TTTTGTAATACGACTCACTATAGGGCGGCCGGAATTCGTCGACTGGATCCGGTACCGAGGAGATCTGCC  
 GCC**GCGATCGCC**

ATGGAGCTGGATCTGTCTCCACCTCATCTTAGCAGCTCTCGGAAGACCTTTGCCAGCCCTGGGACCC  
 CTCTGGGACTCCCGGCCCTGATACCCTCTGCCTGAGGAGGTAAAGAGGTCCAGCCTCTCTCAT  
 CCCAACCCAGCAGGAACTTCGAGAGGAGGAGGCGTCCACCTCCCTCCCTCTATCCCAACCC  
 TTCCCTGAGCTCTGCAGTCTCCCTCACAGAGCCAACTTCGGGGGCCCTCCAGTGCAAGGGGCTGC  
 TCCCCCGGATGCCAGCCGCCCATGTAGTAAAGGTGTACAGTGGAGTGGGCCTGCAGTCTGTGGA  
 GGTGGCAGCAGGTGCCACAGCTCGCCACGTGTGTGAAATGCTGGTGCAGCGAGCTCACGCCTTGAGCGAC  
 GAGACCTGGGGGCTGGTGGAGTCCACCCACCTAGCACTGGAGCGGGTTGGAGGACCAGGATCCG  
 TGGTGAAGTGCAGGCTGCCTGGCCGTGGCGGAGATAGCCGTTTCGTTCCGGAAAACTTCGCCAA  
 GTACGAACTGTTCAAGAGCTCCCAACACTCCCTGTTCCAGAAAAATGGTCTCCAGCTGTCTCGATGCA  
 CACACTGGTATATCCCATGAAGACCTCATCCAGAACTTCCTGAATGCTGGCAGCTTTCCTGAGATCCAGG  
 GCTTCTGCAGCTGCGGGGTTCCAGGACGGAAGCTTTGAAACGCTTTTCTGCTTCTTGCCCGATCTGG  
 CCTTATTAATCCACCAAGGGCACCTCTAAGGATCCGAGGCACCTGCAGTACGTGGCAGATGTGAACGAG  
 TCCAACGTGTACGTGGTACGACAGGCGCAAGCTCTACGGGATGCCACTGACTTCGGTTTCTGTGTCA  
 AGCCCAACAAGCTTCGAAATGGCCACAAGGGGCTTCGGATCTTCTGCAGTGAAGATGAGCAGAGCCGAC  
 CTGCTGGCTGGCTGCCTTCGCCCTTCAAGTACGGGGTGCAGCTGTACAAGAATTACCAGCAGGCACAG  
 TCTCGCCATCTGCATCCATCTTGTGGCTCCCACCTTGAGAAGTGCCTCAGATAATACCTGGTGG  
 CCATGGACTTCTCTGGCCATGCTGGCGTGTCAATTGAGAACCCTGGGAGGCTCTGAGTGGCCCTGGA  
 GGAGGCCAGGCCTGGAGGAAGAAGACAACCACCGCCTCAGCCTGCCATGCCAGCCTCCGGCAGCAGC  
 CTCAGTGCAGCCATCCACCGCACCAACTCTGGTTCACGGGCGCATTTCCCGTGAAGGAGCCAGCGGC  
 TTATTGGACAGCAGGCTTGGTAGACGGCTGTTCTGCTCCGGGAGAGTCAAGGAAACCCAGGGCTT  
 TGTCTCTCTTTGTGCCACCTGCAGAAAGTGAAGCATTATCTCATCTGCCGAGCGAGGAGGAGGCCGC  
 CTGTACTTCAGCATGGATGATGGCCAGACCCGCTTCACTGACCTGCTGCAGCTCGTGGAGTTCACCAGC  
 TGAACCGGCATCTGCCGTGCTGTCGCCATTGCTGCACCGGGTGGCCCT

**ACGCGT**ACGCGGCCGCTCGAGCAGAACTCATCTCAGAAGAGGATCTGGCAGCAAATGATATCTGGATT  
 ACAAGGATGACGACGATAAGGTTTAA

**Protein Sequence:**

>RC215362 representing NM\_005310  
 Red=Cloning site Green=Tags(s)

MELDLSPPHLSSSPEDLCPAPGTPPGTPRPPDTPLEEVKRSQPLLIPPTDRKLREEERRATSLPSIPNP  
 FPELCSPPSQSPIILGGPSSARGLLPRDASRPVVKVYSEDGACRSVEVAAGATARHVCEMLVQRAHALSD  
 ETWGLVECHPHLALERGLEDHESVVEVQAAPVGGDSRFVFRKNFAKYELFKSSPHSLFPEKMOVSSCLDA  
 HTGISHEDLIQNFLNAGSFPEIQGFLQLRGSGRKLWKRFFCFLRRSGLYYSTKGTSKDPRHLQYVADVNE  
 SNVYVVTQGRKLYGMPDFGFVCPKNLNRNGHGLRIFCSEDEQSRTCWLAARFLFKYGVQLYKNYQQAQ  
 SRHLHPSCLGSPPLRSASDNTLVAMDFSGHAGRVNIENPREALSVALEEAQAWRKKTNHRLSLPMPASGTS  
 LSAAIHRQLWFHGRISREESQRLIGQQGLVDGLFLVRESQRNPQGFVLSLCHLQKVKHYLILPSEEEGR  
 LYFSMDDGQTRFTDLLQLVEFHQLNRGILPCLLRHCCTRAL

**TRTRPLEQKLI**SEEDLAANDILDYKDDDDKV

**Chromatograms:**

[https://cdn.origene.com/chromatograms/mk6045\\_h02.zip](https://cdn.origene.com/chromatograms/mk6045_h02.zip)

**Restriction Sites:**

Sgfl-Mlul



**Cytogenetics:** 17q12

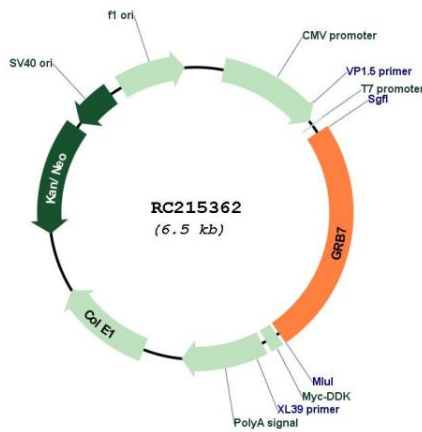
**Domains:** RA, SH2, PH

**Protein Families:** Druggable Genome, Embryonic stem cells, Stem cell - Pluripotency

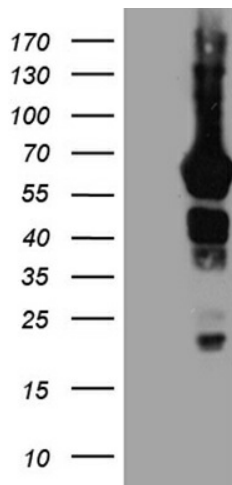
**MW:** 59.5 kDa

**Gene Summary:** The product of this gene belongs to a small family of adapter proteins that are known to interact with a number of receptor tyrosine kinases and signaling molecules. This gene encodes a growth factor receptor-binding protein that interacts with epidermal growth factor receptor (EGFR) and ephrin receptors. The protein plays a role in the integrin signaling pathway and cell migration by binding with focal adhesion kinase (FAK). Several transcript variants encoding two different isoforms have been found for this gene. [provided by RefSeq, Jun 2011]

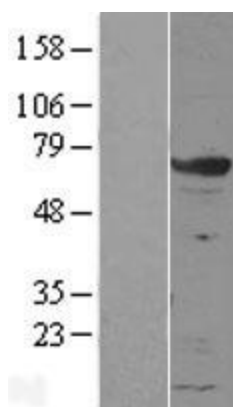
**Product images:**



Circular map for RC215362



HEK293T cells were transfected with the pCMV6-ENTRY control (Cat# [PS100001], Left lane) or pCMV6-ENTRY GRB7 (Cat# RC215362, Right lane) cDNA for 48 hrs and lysed. Equivalent amounts of cell lysates (5 ug per lane) were separated by SDS-PAGE and immunoblotted with anti-GRB7 (Cat# [TA809283])(1:2000). Positive lysates [LY401639] (100ug) and [LC401639] (20ug) can be purchased separately from OriGene.



Western blot validation of overexpression lysate (Cat# [LY401639]) using anti-DDK antibody (Cat# [TA50011-100]). Left: Cell lysates from untransfected HEK293T cells; Right: Cell lysates from HEK293T cells transfected with RC215362 using transfection reagent MegaTran 2.0 (Cat# [TT210002]).