

Product datasheet for RC215355

MAGEA2 (MAGEA2B) (NM_153488) Human Tagged ORF Clone

Product data:

Product Type:	Expression Plasmids
Product Name:	MAGEA2 (MAGEA2B) (NM_153488) Human Tagged ORF Clone
Tag:	Myc-DDK
Symbol:	MAGEA2
Synonyms:	CT1.2; MAGE2
Mammalian Cell Selection:	Neomycin
Vector:	pCMV6-Entry (PS100001)
E. coli Selection:	Kanamycin (25 ug/mL)
ORF Nucleotide Sequence:	>RC215355 ORF sequence Red=Cloning site Blue=ORF Green=Tags(s)

TTTTGTAATACGACTCACTATAGGGCGGCCGGAATTCGTCGACTGGATCCGGTACCGAGGAGATCTGCC
GCC**CGGATCGCC**

ATGCCTCTTGAGCAGAGGAGTCAGCACTGCAAGCCTGAAGAAGGCCTTGAGGCCGAGGAGAGGCCCTGG
GCCTGGTGGGTGCGCAGGCTCCTGCTACTGAGGAGCAGCAGACCGCTTCTCCTTCTACTCTAGTGGA
AGTTACCCTGGGGAGGTGCCTGCTGCCGACTCACCGAGTCTCCACAGTCTCAGGGAGCCTCCAGC
TTCTCGACTACCATCACTACACTCTTTGGAGACAATCCGATGAGGGCTCCAGCAACCAAGAAGAGGAGG
GGCCAAGAATGTTTCCGACCTGGAGTCCGAGTCCAAGCAGCAATCAGTAGGAAGATGGTTGAGTTGGT
TCAATTTCTGCTCCTCAAGTATCAAGCCAGGGAGCCGGTCAAAAAGGCAGAAATGCTGGAGAGTGTCTC
AGAAATTGCCAGGACTTCTTCCCGTGATCTTCAGCAAAGCCTCCGAGTACTTGCAGCTGGTCTTTGGCA
TCGAGGTGGTGAAGTGGTCCCCATCAGCCACTTGACATCCTTGTACCTGCCTGGGCCTCTCCTACGA
TGGCCTGCTGGGCGACAATCAGGTATGCCAAGACAGGCCTCCTGATAATCGTCTGGCCATAATCGCA
ATAGAGGGCGACTGTGCCCTGAGGAGAAAATCTGGGAGGAGCTGAGTATGTTGGAGGTGTTTGGGGGA
GGGAGGACAGTGTCTTCGCACATCCCAGGAAGCTGCTCATGCAAGATCTGGTGCAGGAAAACCTACCTGGA
GTACCGGCAGGTGCCCGCAGTATCCTGCATGCTACGAGTTCCTGTGGGGTCCAAGGGCCCTCATTGAA
ACCAGCTATGTGAAAGTCTGCACCATACTAAAGATCGGTGGAGAACCTCACATTTCTACCCACCCC
TGCATGAACGGGCTTTGAGAGAGGGAGAAGAG

ACGCGTACGCGGCCGCTCGAGCAGAAACTCATCTCAGAAGAGGATCTGGCAGCAAATGATATCCTGGATT
ACAAGGATGACGACGATAAGGTTTAA



[View online »](#)

Protein Sequence: >RC215355 protein sequence
 Red=Cloning site Green=Tags(s)

MPLEQRSQHCKPEEGLEARGEALGLVGAQAPATEEQQTASSSSTLVEVTLGEVPAADSPSPHPSPQGASS
 FSTTINYTLWRQSDGSSNQEEEGPRMFPDLESEFQAAISRKMVELVHFLLLKYQAREPVTKAEMLESVL
 RNCQDFFPVIFSKASEYLQLVFGIEVVEVVPISHLYILVTCLGLSYDGLLDGNQVMPKTGLLIIVLAIIA
 IEGDCAPEEKIWEELSMLEVFEGREDSVFAHPRKLLMQDLVQENYLEYRQVPGSDPACYEFLWGPRALIE
 TSYVKVLHHTLKI GGEPHISYPPLHERALREGEE

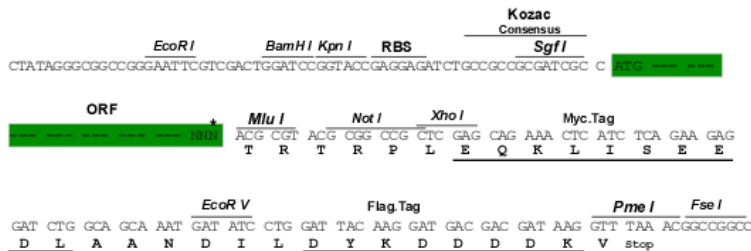
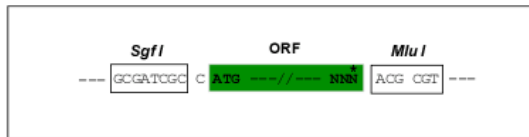
TRTRPLEQKLISEEDLAANDILDYKDDDDKV

Chromatograms: https://cdn.origene.com/chromatograms/mk6525_b09.zip

Restriction Sites: SgfI-MluI

Cloning Scheme:

Cloning sites used for ORF Shuttling:



* The last codon before the Stop codon of the ORF

ACCN: NM_153488

ORF Size: 942 bp

OTI Disclaimer: The molecular sequence of this clone aligns with the gene accession number as a point of reference only. However, individual transcript sequences of the same gene can differ through naturally occurring variations (e.g. polymorphisms), each with its own valid existence. This clone is substantially in agreement with the reference, but a complete review of all prevailing variants is recommended prior to use. [More info](#)

OTI Annotation: This clone was engineered to express the complete ORF with an expression tag. Expression varies depending on the nature of the gene.

Components: The ORF clone is ion-exchange column purified and shipped in a 2D barcoded Matrix tube containing 10ug of transfection-ready, dried plasmid DNA (reconstitute with 100 ul of water).

Reconstitution Method:

1. Centrifuge at 5,000xg for 5min.
2. Carefully open the tube and add 100ul of sterile water to dissolve the DNA.
3. Close the tube and incubate for 10 minutes at room temperature.
4. Briefly vortex the tube and then do a quick spin (less than 5000xg) to concentrate the liquid at the bottom.
5. Store the suspended plasmid at -20°C. The DNA is stable for at least one year from date of shipping when stored at -20°C.

RefSeq: [NM_153488.4](#)

RefSeq Size: 1629 bp

RefSeq ORF: 945 bp

Locus ID: 266740

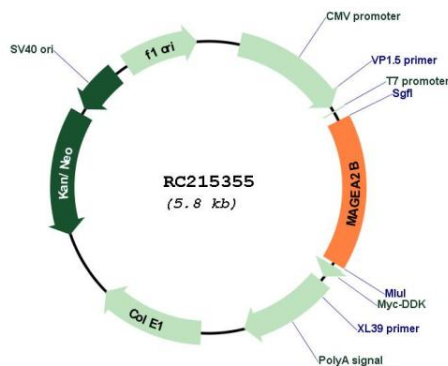
UniProt ID: [P43356](#)

Cytogenetics: Xq28

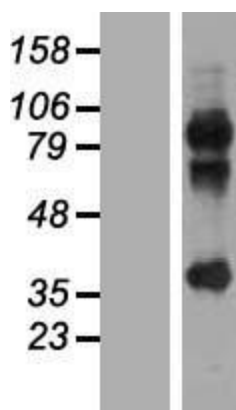
MW: 35 kDa

Gene Summary: This gene is a member of the MAGEA gene family. The members of this family encode proteins with 50 to 80% sequence identity to each other. The promoters and first exons of the MAGEA genes show considerable variability, suggesting that the existence of this gene family enables the same function to be expressed under different transcriptional controls. The MAGEA genes are clustered at chromosomal location Xq28. They have been implicated in some hereditary disorders, such as dyskeratosis congenita. This gene has two identical copies at different loci. [provided by RefSeq, Jul 2008]

Product images:



Circular map for RC215355



Western blot validation of overexpression lysate (Cat# [LY407012]) using anti-DDK antibody (Cat# [TA50011-100]). Left: Cell lysates from untransfected HEK293T cells; Right: Cell lysates from HEK293T cells transfected with RC215355 using transfection reagent MegaTran 2.0 (Cat# [TT210002]).