

Product datasheet for **RC215354**

nkx6.3 (NKX6-3) (NM_152568) Human Tagged ORF Clone

Product data:

Product Type:	Expression Plasmids
Product Name:	nkx6.3 (NKX6-3) (NM_152568) Human Tagged ORF Clone
Tag:	Myc-DDK
Symbol:	nkx6.3
Synonyms:	NKX6.3
Mammalian Cell Selection:	Neomycin
Vector:	pCMV6-Entry (PS100001)
E. coli Selection:	Kanamycin (25 ug/mL)
ORF Nucleotide Sequence:	>RC215354 representing NM_152568 Red=Cloning site Blue=ORF Green=Tags(s)

TTTTGTAATACGACTCACTATAGGGCGGCCGGAATTCGTCGACTGGATCCGGTACCGAGGAGATCTGCC
GCC**CGATCGCC**

ATGCAGCAGGGGCAGCTGGCACCTGGGTCTAGGCTTTGCTCAGGGCCCTGGGGCCTCCCGAGCTCCAAC
CCGCTGCGCCCTCCTCATCAGCCGCTCAGCTGCCCTGGGGCGAGAGCTGGGGGAAGAAGCAGACTCC
TGCATGTCTTTCTGCTTCTGGGTGTGGTTCCAGAACCAGGACCAAGTGGCGGAAGAAGAGCGCCCTG
GAGCCCTCGTCTCCACGCCCGGGCCCGGGCGCGGGTGCAGGCGCAGGCGGGACCGCGCACCT
CGGAGAACGAGGACGACGAGTACAACAAGCCGCTGGACCCGACTCGGACGACGAGAAGATCCGCCTGCT
GCTGCGCAAGCACCGCGCCCTTCTCGGTGCTCAGCCTGGGAGCGCACAGCGTC

ACGCGTACGCGGCCGCTCGAGCAGAACTCATCTCAGAAGAGGATCTGGCAGCAAATGATATCCTGGATT
ACAAGGATGACGACGATAAGGTTTAA

Protein Sequence:	>RC215354 representing NM_152568 Red=Cloning site Green=Tags(s)
Chromatograms:	https://cdn.origene.com/chromatograms/mk8027_c07.zip
Restriction Sites:	SgfI-MluI

MQQGQLAPGSRLCSGPWGLPELQPAAPSSSAAQLPWGESWGEEADTPACL SASGVWFQNRRTKWRKKSAL
EPSSTPRAPGGAGAGAGGDRAPSENEDEYNKPLDPDSDDEKIRLLLRKHRAAFSVLSLGAHSV

TRTRPLEQKLISEEDLAANDILDYKDDDDKV



[View online »](#)

Cloning Scheme:


ACCN: NM_152568

ORF Size: 405 bp

OTI Disclaimer: The molecular sequence of this clone aligns with the gene accession number as a point of reference only. However, individual transcript sequences of the same gene can differ through naturally occurring variations (e.g. polymorphisms), each with its own valid existence. This clone is substantially in agreement with the reference, but a complete review of all prevailing variants is recommended prior to use. [More info](#)

OTI Annotation: This clone was engineered to express the complete ORF with an expression tag. Expression varies depending on the nature of the gene.

Components: The ORF clone is ion-exchange column purified and shipped in a 2D barcoded Matrix tube containing 10ug of transfection-ready, dried plasmid DNA (reconstitute with 100 ul of water).

- Reconstitution Method:**
1. Centrifuge at 5,000xg for 5min.
 2. Carefully open the tube and add 100ul of sterile water to dissolve the DNA.
 3. Close the tube and incubate for 10 minutes at room temperature.
 4. Briefly vortex the tube and then do a quick spin (less than 5000xg) to concentrate the liquid at the bottom.
 5. Store the suspended plasmid at -20°C. The DNA is stable for at least one year from date of shipping when stored at -20°C.

RefSeq: [NM_152568.3](#), [NP_689781.1](#)

RefSeq Size: 1640 bp

RefSeq ORF: 408 bp

Locus ID: 157848

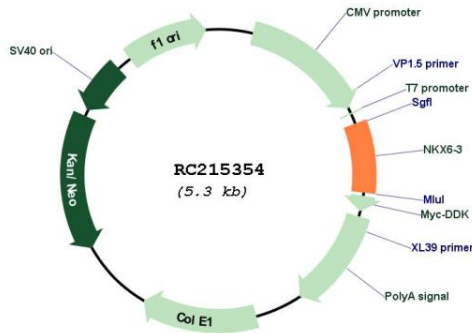
UniProt ID: [A6NJ46](#)

Cytogenetics: 8p11.21

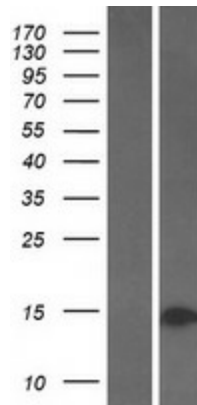
MW: 14.1 kDa

Gene Summary: The NKX family of homeodomain proteins controls numerous developmental processes. Members of the NKX6 subfamily, including NKX6-3, are involved in development of the central nervous system (CNS), gastrointestinal tract, and pancreas (Alanentalo et al., 2006 [PubMed 16326147]).[supplied by OMIM, Mar 2008]

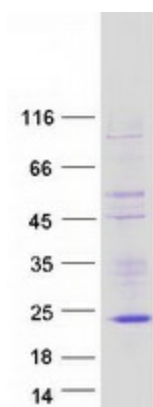
Product images:



Circular map for RC215354



Western blot validation of overexpression lysate (Cat# [LY407438]) using anti-DDK antibody (Cat# [TA50011-100]). Left: Cell lysates from untransfected HEK293T cells; Right: Cell lysates from HEK293T cells transfected with RC215354 using transfection reagent MegaTran 2.0 (Cat# [TT210002]).



Coomassie blue staining of purified NKX6-3 protein (Cat# [TP315354]). The protein was produced from HEK293T cells transfected with NKX6-3 cDNA clone (Cat# RC215354) using MegaTran 2.0 (Cat# [TT210002]).