

## Product datasheet for **RC215347**

### **C9orf127 (TMEM8B) (NM\_001042590) Human Tagged ORF Clone**

#### **Product data:**

|                           |   |
|---------------------------|---|
| Product Type:             | Expression Plasmids                                     |
| Product Name:             | C9orf127 (TMEM8B) (NM_001042590) Human Tagged ORF Clone |
| Tag:                      | Myc-DDK   |
| Symbol:                   | C9orf127  |
| Synonyms:                 | C9orf127; FP588; LINC00950; NAG-5; NAG5; NGX6; NGX6a    |
| Mammalian Cell Selection: | Neomycin  |
| Vector:                   | pCMV6-Entry (PS100001)                                  |
| E. coli Selection:        | Kanamycin (25 ug/mL)                                    |



[View online »](#)

**ORF Nucleotide Sequence:**

>RC215347 representing NM\_001042590  
 Red=Cloning site Blue=ORF Green=Tags(s)

TTTTGTAATACGACTCACTATAGGGCGGCCGGGAATTCGTCGACTGGATCCGGTACCGAGGAGATCTGCC  
 GCC**GCGATCGCC**

ATGAACATGCCCCAGTCCCTGGCAACCCAGCCACTGCCCCAGAACCGCCATCCCTTGGAAACCCTGCGG  
 AGGGCCCTGGGACCACGTCCCCACCCGAGCACTGCTGGCCAGTGCGCCCGACTCTGCGCAACGAGCTGGA  
 CACCTTCTCTGTCCACTTCTACATCTTCTTTGGCCCAAGTGTGGCCCTTCCCCCTGAGCGCCAGCCGTG  
 TTCGCCATGAGGCTGTTGCCAGTCTGGACAGTGGAGGCGTCTCAGCCTGGAGCTCCAGCTCAATGCGA  
 GCTCCGTGCGCCAGGAAAACGTGACGGTGTGGATGCTTACTCAGGAGTGCCTTGAGCCTGGGGGA  
 TGCAGCAGTACCTGTTCCAAAGAGTCCCTGGCCGGCTTCTCCTCTCTGTCACTGCCACCACAGGGTT  
 GCCAGGCTGCGAATCCCATTCCCGCAGACGGGACCTGGTTCTGGCCCTCCGCTCCCTGTGCGGGGTGG  
 GGCCTCGGTTCTGCGGTGCCGAACCGCAGCGCCGAGGTGCGGATGCGCACCTTCTGTCCCCATGCGT  
 GGACGACTGCGGGCCCTACGGCCAGTGAAGCTGCTGCGCACACAATTATCTGTACGCAGCCTGCGAG  
 TGAAGGCCGGGTGGAGAGGCTGGGGCTGCACCGACAGTGCAGATGCGCTCACCTATGGATTCCAGCTGC  
 TGTCACACTCCTGCTCTGCCTGAGCAACCTCATGTTTCTGCCACCTGTGGTCTGGCCATTGCGAGTCG  
 ATATGTGCTGGAAGCTGCAGTCTACACCTTACCATGTTCTTCTCCACGTTCTATCATGCCTGTGACCAG  
 CCAGGCATCGTGGTTTTCTGCATCATGGACTACGATGTGCTGCAGTTCTGTGATTTCTGGGCTCCTTAA  
 TGTCCGTGTTGGTCACTGTCAATGCCATGGCTCGTTTACAGCCCGTGGTCAAGCAGGTGCTGATTTGCT  
 GGGAGCTATGTGCTGTCCATGGCTCTGCAGCTGACCGACATGGACTCTGGAACCTGCTGGACCCAGT  
 CTCTTCGCCCTGGGGATCTTGGCCACAGCCTGGACAGTACGCAGCGTCCGCCCGCCGACTGTACCCAC  
 CCACGTGGCGCCGCTGGCTTTTCTACTTGTGCCCTGACGCTTATTGCAGGCAGTCCGCTCCTGCTTTA  
 TGCTTTTGTGGAGACCCGGGACAACACTTCTACATTACAGCATTGGCATATGCTCATTGCGGGCAGT  
 GTGGGTTCTGCTGCCCCCTCGTGCCAAGACTACCACGGGGTCCCATCTGGAGCCCGGGCCGGGGCT  
 GTGGTTACCAGCTATGCATCAACGAGCAGGAGGAGCTGGGCTCGTGGGCCAGGAGGGCCACTGTGAG  
 CAGCATCTGTGCCAGC

**ACGCGT**ACGCGGCCGCTCGAGCAGAAACTCATCTCAGAAGAGGATCTGGCAGCAAATGATATCCTGGATT  
 ACAAGGATGACGACGATAAGGTTTAA

**Protein Sequence:**

>RC215347 representing NM\_001042590  
 Red=Cloning site Green=Tags(s)

MNMPQSLGNQPLPPEPPSLGTPAEGPGTSPPEHCWPVRPTLRNELDTFSVHFYIFFGPSVALPPERPAV  
 FAMRLLPVLDSSGVLSELEQLNASSVRQENVTVFGCLTHEVPLSLGDAAVTCSKESLAGFLLSVSATTRV  
 ARLRIPFPQTGTWFLALRSLCGVGRFVRCRNATAEVRMRTFLSPCVDDCGPYGQCKLLRTHNYLYAAACE  
 CKAGRWGCTDSADALTYGFQLLSTLLCLSNLMFLPPVVLAIKRSRYVLEAAVYFTMFFSTFYHACDQ  
 PGIIVVFCIMDYDVLQFCDFLGSLSVWVTVIAMARLQPVKQVLYLLGAMLLSMALQLDRHGLWNLLGPS  
 LFALGILATAWTVRSVRRRHCPPTWRRWLFYLCPSGLIAGSAVLLYAFVETRDNYFYIHSIWHMLIAGS  
 VGFLPPRAKTDHGVPSGARARGCYQLCINEQEELGLVPGGATVSSICAS

**TR**TRPLEQKLISEEDLAANDILDYKDDDDKV

**Chromatograms:**

[https://cdn.origene.com/chromatograms/mk8062\\_b09.zip](https://cdn.origene.com/chromatograms/mk8062_b09.zip)

**Restriction Sites:**

Sgfl-Mlul

**Cloning Scheme:**


**ACCN:** NM\_001042590

**ORF Size:** 1416 bp

**OTI Disclaimer:** The molecular sequence of this clone aligns with the gene accession number as a point of reference only. However, individual transcript sequences of the same gene can differ through naturally occurring variations (e.g. polymorphisms), each with its own valid existence. This clone is substantially in agreement with the reference, but a complete review of all prevailing variants is recommended prior to use. [More info](#)

**OTI Annotation:** This clone was engineered to express the complete ORF with an expression tag. Expression varies depending on the nature of the gene.

**Components:** The ORF clone is ion-exchange column purified and shipped in a 2D barcoded Matrix tube containing 10ug of transfection-ready, dried plasmid DNA (reconstitute with 100 ul of water).

- Reconstitution Method:**
1. Centrifuge at 5,000xg for 5min.
  2. Carefully open the tube and add 100ul of sterile water to dissolve the DNA.
  3. Close the tube and incubate for 10 minutes at room temperature.
  4. Briefly vortex the tube and then do a quick spin (less than 5000xg) to concentrate the liquid at the bottom.
  5. Store the suspended plasmid at -20°C. The DNA is stable for at least one year from date of shipping when stored at -20°C.

**RefSeq:** [NM\\_001042590.2](#), [NP\\_001036055.1](#)

**RefSeq Size:** 3747 bp

**RefSeq ORF:** 2775 bp

**Locus ID:** 51754

**UniProt ID:** [A6NDV4](#)

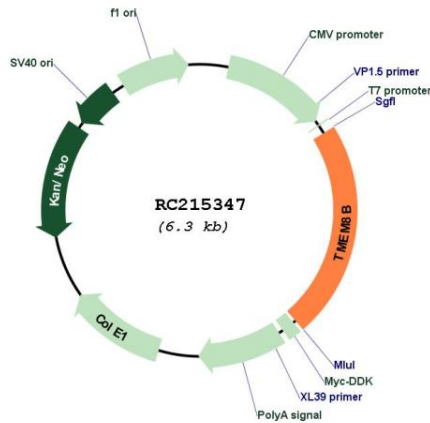
**Cytogenetics:** 9p13.3

**Protein Families:** Transmembrane

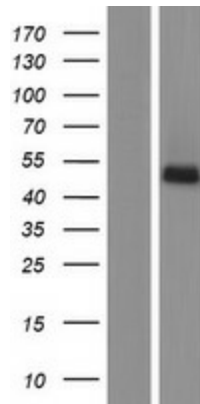
**MW:** 51.8 kDa

**Gene Summary:** May function as a regulator of the EGFR pathway. Probable tumor suppressor which may function in cell growth, proliferation and adhesion.[UniProtKB/Swiss-Prot Function]

**Product images:**



Circular map for RC215347



Western blot validation of overexpression lysate (Cat# [LY420998]) using anti-DDK antibody (Cat# [TA50011-100]). Left: Cell lysates from untransfected HEK293T cells; Right: Cell lysates from HEK293T cells transfected with RC215347 using transfection reagent MegaTran 2.0 (Cat# [TT210002]).