

Product datasheet for **RC215346**

SPATA7 (NM_018418) Human Tagged ORF Clone

Product data:

Product Type:	Expression Plasmids
Product Name:	SPATA7 (NM_018418) Human Tagged ORF Clone
Tag:	Myc-DDK
Symbol:	SPATA7
Synonyms:	HEL-S-296; HSD-3.1; HSD3; LCA3
Mammalian Cell Selection:	Neomycin
Vector:	pCMV6-Entry (PS100001)
E. coli Selection:	Kanamycin (25 ug/mL)



[View online »](#)

ORF Nucleotide Sequence:

>RC215346 representing NM_018418
 Red=Cloning site Blue=ORF Green=Tags(s)

TTTTGTAATACGACTCACTATAGGGCGGCCGGAATTCGTCGACTGGATCCGGTACCGAGGAGATCTGCC
 GCC**CGGATCGCC**

ATGGATGGCAGCCGGAGAGTCCAGAGCAACCTCTGTCTTCCAGATATGGTCCACCGTGCCTATTTAAAG
 GACTTGGAGCACAAAAGTAATGCTTTTTGACTGACTCCTTCTCTCAGACTAAGCACTCTCCAGCT
 GGTCAAGAATCACATGGCTGTCTACTATAATAAATCCTTTCAGCCAAAGCTGCAGTAGACTGCTCGGTT
 CCAGTAAGCATGAGTACCAGCATAAAGTATGCAGACCAACAACGAAGAGAGAACTCAAAAAGGAATTAG
 CACAATGTGAAAAAGAGTTCAAATTAATAAACTGCAATGCGAGCCAATTATAAAAAATAATCCAAAGTC
 ACTTTTTAATACCTTACAAAAGCCCTCAGGCGAACCGCAAATTGAGGATGACATGTTAAAAGAAGAAATG
 AATGGATTTTCATCCTTTGCAAGGTCAGTACCCTTTCAGAGAGACTACACCTAAGTCTACATAAAT
 CCAGTAAAGTCATACAAATGGTCTGAGAAGAACTCCAGTTCCTCCCGTCCAGTGTGGATTATGCAGC
 CTCGGGGCCCCGAAACTGAGCTCTGGAGCCCTGTATGGCAGAAGGCCAGAACACATTCCCAAATTC
 CACCGGTTTCAGTTAGTCATTTGAAAGCACCCAGTGGGGATCTTTGGATAAACATTCTGAACTCTTT
 CTAACAAACAATTGCCATTCCTCCTCGCACTTTAAAAACAGAAGCAAAATCTTCTGTACAGTATCG
 CTATTATACACCTGCCAAAAGAAAAAGGATTTTACAGATCAACGGATAGAAGCTGAAACCCAGACTGAA
 TTAAGCTTTAAATCTGAGTTGGGACAGCTGAGACTAAAAACATGACAGATTAGAAATGAACATAAAGC
 AGGCATCTAATTTGTGACATATGATGCCAAAAGAAAAATAGCTCCTTTACCTTTAGAAGGGCATGACTC
 AACATGGGATGAGATTAAGGATGATGCTTTCAGCATTCTCACAAGGGCAATGTGTCAGTATTCCTG
 AAGCCCCCTTCAACTCGTAAAACTACTCTGATGAAGAAGAACTGTTGTATCTGAGTTTCATTGAAGAT
 TAACAGATGAAATTTTGAACCTTGTTTTATTTTCAAACAGTTTTTGAACGACTGTCGAGCGACATAT
 AAAACAAAATAAACATTTGGAGGAGGAAAAATGCGCCACCTGCTGCATGCTGAAAGTAGACTTAGGC
 TGCACATCGGAGGAAAACTCGGTAAGCAAAATGATGTTGATATGTTGAATGATTTGATTTGAAAAGG
 CTGGGAATTCAGAACCAATGAATTAATAAATGAAAGTGAAGTAAACAATTCAGCAGGAACGTCAACAATA
 CAAAAGGCTTTGGATATGTTATTGTCGGCACCAAGGATGAGAACGAGATATCCCTTACCAACTGAA
 TTTTTCATGCCTATTTATAAATCAAAGCATTGAGAAGGGTTATAATTCAACAGGTGAATGATGAAACAA
 ATCTTGAACTTCAACTTTGGATGAAAATCATCCAAGTATTTAGACAGTTTAAACAGATCGGAAACTTC
 TGTGAATGTCATTGAAGGTGATAGTGACCTGAAAAGTTGAGATTTCAAATGGATTATGTGGTCTTAAC
 ACATCACCTCCCAATCTGTTTCAGTTCTCCAGTGTCAAAGGCGACAATAATCATGACATGGAGTTATCAA
 CTCTAAAATCATGAAATGAGCATTGAGGACTGCCCTTTGGATGTT

ACGCGTACGCGGCCGCTCGAGCAGAAACTCATCTCAGAAGAGGATCTGGCAGCAAATGATATCCTGGATT
 ACAAGGATGACGACGATAAGGTTTAA

Protein Sequence:

>RC215346 representing NM_018418
 Red=Cloning site Green=Tags(s)

MDGSRVRATSVLPRYGPPCLFKGHLSTKSNAFCTDSSSLRLSTLQLVKNHMAVHYNKILSAKAAVDCSV
 PVMSTSIKYADQQRREKLKKELAQCEKEFKLTKTAMRANYKNNKSLFNLTQKPSGEPQIEDMLKEEM
 NGFSSFARSLVPSSERLHLHLKSSKVIINGPEKNSSSSPSSVDYAAAGPRKLSGALYGRRPRSTFPNS
 HRFQLVISKAPSGDLLDKHSELSNKLQFPPTPRTLKTAKSFLSQYRYTPAKRKKDFTDQRIEAEQTE
 LSFKSELGTAETKNMTDSEMNIAQASNCVTDYAKEKIAPLPLEGHDSTWDEIKDDALQHSSPRAMCQYSL
 KPPSTRKIYSDEEELLYLSFIEDVTDEILKLGFLSNRFLERL FERHIKQNKHLEEEKMRHLLHVLKVDLG
 CTSEENSVKQNDVMDLNVDFEKAAGNSEPNELKNESEVTIQQERQQYQKALDMLLSAPKDENEIFPSPT
 FFMPIYKSKHSEGVIIQQVNDENLETSTLDENHPSISDLSLTDRETSVNVVIEGDSPEKVEISNGLCGLN
 TSPSQSVQFSSVKGDNNHDMELSTLKIMEMSIEDCPLDV

TRTRPLEQKLISEEDLAANDILDYKDDDDKV

Chromatograms:

https://cdn.origene.com/chromatograms/mk6487_a06.zip

Restriction Sites: SgfI-MluI

Cloning Scheme:



ACCN: NM_018418

ORF Size: 1797 bp

OTI Disclaimer: The molecular sequence of this clone aligns with the gene accession number as a point of reference only. However, individual transcript sequences of the same gene can differ through naturally occurring variations (e.g. polymorphisms), each with its own valid existence. This clone is substantially in agreement with the reference, but a complete review of all prevailing variants is recommended prior to use. [More info](#)

OTI Annotation: This clone was engineered to express the complete ORF with an expression tag. Expression varies depending on the nature of the gene.

Components: The ORF clone is ion-exchange column purified and shipped in a 2D barcoded Matrix tube containing 10ug of transfection-ready, dried plasmid DNA (reconstitute with 100 ul of water).

- Reconstitution Method:
1. Centrifuge at 5,000xg for 5min.
 2. Carefully open the tube and add 100ul of sterile water to dissolve the DNA.
 3. Close the tube and incubate for 10 minutes at room temperature.
 4. Briefly vortex the tube and then do a quick spin (less than 5000xg) to concentrate the liquid at the bottom.
 5. Store the suspended plasmid at -20°C. The DNA is stable for at least one year from date of shipping when stored at -20°C.

RefSeq: [NM_018418.5](#)

RefSeq Size: 2009 bp

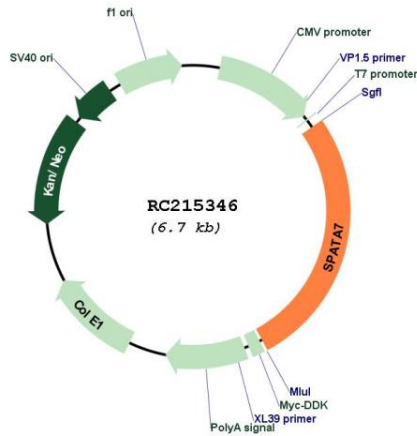
RefSeq ORF: 1800 bp

Locus ID: 55812

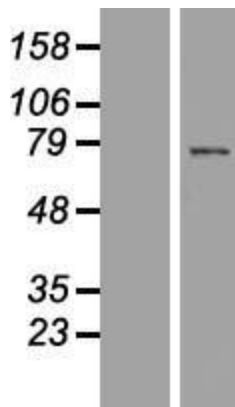
UniProt ID: [Q9P0W8](#)
 Cytogenetics: 14q31.3
 MW: 67.5 kDa

Gene Summary: This gene, originally isolated from testis, is also expressed in retina. Mutations in this gene are associated with Leber congenital amaurosis and juvenile retinitis pigmentosa. Alternatively spliced transcript variants encoding different isoforms have been found for this gene. [provided by RefSeq, May 2010]

Product images:



Circular map for RC215346



Western blot validation of overexpression lysate (Cat# [LY413064]) using anti-DDK antibody (Cat# [TA50011-100]). Left: Cell lysates from untransfected HEK293T cells; Right: Cell lysates from HEK293T cells transfected with RC215346 using transfection reagent MegaTran 2.0 (Cat# [TT210002]).