

Product datasheet for **RC215340**

CD79B (NM_000626) Human Tagged ORF Clone

Product data:

Product Type: Expression Plasmids
Product Name: CD79B (NM_000626) Human Tagged ORF Clone
Tag: Myc-DDK
Symbol: CD79B
Synonyms: AGM6; B29; IGB
Mammalian Cell Selection: Neomycin
Vector: pCMV6-Entry (PS100001)
E. coli Selection: Kanamycin (25 ug/mL)
ORF Nucleotide Sequence: >RC215340 ORF sequence
Red=Cloning site Blue=ORF Green=Tags(s)

TTTTGTAATACGACTCACTATAGGGCGGCCGGAATTCGTCGACTGGATCCGGTACCGAGGAGATCTGCC
GCC**CGATCGCC**

ATGGCCAGGCTGGCGTTGTCTCCTGTGCCAGCCACTGGATGGTGGCGTTGCTGCTGCTCTCAGCTG
AGCCAGTACCAGCAGCCAGATCGGAGGACCGGTACCGGAATCCCAAAGGTAGTGCTTGTTCGCGGATCTG
GCAGAGCCACGTTTCATAGCCAGGAAACGGGGCTTCACGGTGAAAATGCACTGTACATGAACAGCGCC
TCCGGCAATGTGAGCTGGCTCTGGAAGCAGGAGATGGACGAGAATCCCCAGCAGCTGAAGCTGGAAAAGG
GCCGCATGGAAGAGTCCCAGAACGAATCTCTCGCCACCCTCACCATCCAAGGCATCCGGTTTGAGGACAA
TGGCATCTACTTCTGCCAGCAGAAGTGCAACAACACCTCGGAGGTCTACCAGGGCTGCGGCACAGAGCTG
CGAGTCATGGGATTGAGCACCTTGGCACAGCTGAAGCAGAGGAACACGCTGAAGGATGGTATCATCATGA
TCCAGACGCTGCTGATCATCCTCTTCATCATCGTGCCTATCTTCTGCTGCTGGACAAGGATGACAGCAA
GGCTGGCATGGAGGAAGATCACACCTACGAGGGCTGGACATTGACCAGACAGCCACCTATGAGGACATA
GTGACGCTGCGGACAGGGGAAGTGAAGTGGTCTGTAGGTGAGCACCCAGGCCAGGAG

ACGCGTACGCGGGCCGCTCGAGCAGAACTCATCTCAGAAGAGGATCTGGCAGCAAATGATATCCTGGATT
ACAAGGATGACGACGATAAGGTTTAA



[View online »](#)

Protein Sequence: >RC215340 protein sequence
 Red=Cloning site Green=Tags(s)

MARLALSPVPSHWMVALLLLLSAEPVPAARSEDYRNPKGSACSRWQSPRFIARKRGFTVKMHCYMNSA
 SGNVSWLWKQEMDENPQQLKLEKGRMEESQNESLATLTIQGIRFEDNGIYFCQQKCNNTSEVYQGCGETL
 RVMGFSTLAQLKQRNTLKDGIIMIQTLLIILFIIVIPILLDDKDDSKAGMEEDHTYEGLDIDQATYEDI
 VTLRTGEVKWSVGEHPGQE

TRTRPLEQKLISEEDLAANDILDYKDDDDKV

Chromatograms: https://cdn.origene.com/chromatograms/mk6557_h06.zip

Restriction Sites: SgfI-MluI

Cloning Scheme:

Cloning sites used for ORF Shuttling:



* The last codon before the Stop codon of the ORF

ACCN: NM_000626

ORF Size: 687 bp

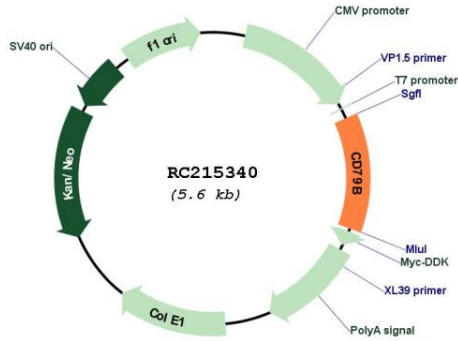
OTI Disclaimer: Due to the inherent nature of this plasmid, standard methods to replicate additional amounts of DNA in E. coli are highly likely to result in mutations and/or rearrangements. Therefore, OriGene does not guarantee the capability to replicate this plasmid DNA. Additional amounts of DNA can be purchased from OriGene with batch-specific, full-sequence verification at a reduced cost. Please contact our customer care team at custsupport@origene.com or by calling 301.340.3188 option 3 for pricing and delivery.

The molecular sequence of this clone aligns with the gene accession number as a point of reference only. However, individual transcript sequences of the same gene can differ through naturally occurring variations (e.g. polymorphisms), each with its own valid existence. This clone is substantially in agreement with the reference, but a complete review of all prevailing variants is recommended prior to use. [More info](#)

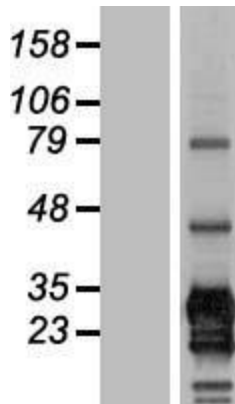
OTI Annotation: This clone was engineered to express the complete ORF with an expression tag. Expression varies depending on the nature of the gene.

Components:	The ORF clone is ion-exchange column purified and shipped in a 2D barcoded Matrix tube containing 10ug of transfection-ready, dried plasmid DNA (reconstitute with 100 ul of water).
Reconstitution Method:	<ol style="list-style-type: none">1. Centrifuge at 5,000xg for 5min.2. Carefully open the tube and add 100ul of sterile water to dissolve the DNA.3. Close the tube and incubate for 10 minutes at room temperature.4. Briefly vortex the tube and then do a quick spin (less than 5000xg) to concentrate the liquid at the bottom.5. Store the suspended plasmid at -20°C. The DNA is stable for at least one year from date of shipping when stored at -20°C.
Note:	Plasmids are not sterile. For experiments where strict sterility is required, filtration with 0.22um filter is required.
RefSeq:	NM_000626.4
RefSeq Size:	1300 bp
RefSeq ORF:	690 bp
Locus ID:	974
UniProt ID:	P40259
Cytogenetics:	17q23.3
Protein Families:	Druggable Genome, Transmembrane
Protein Pathways:	B cell receptor signaling pathway
MW:	26 kDa
Gene Summary:	The B lymphocyte antigen receptor is a multimeric complex that includes the antigen-specific component, surface immunoglobulin (Ig). Surface Ig non-covalently associates with two other proteins, Ig-alpha and Ig-beta, which are necessary for expression and function of the B-cell antigen receptor. This gene encodes the Ig-beta protein of the B-cell antigen component. Alternatively spliced transcript variants encoding different isoforms have been described. [provided by RefSeq, Jul 2008]

Product images:



Circular map for RC215340



Western blot validation of overexpression lysate (Cat# [LY424598]) using anti-DDK antibody (Cat# [TA50011-100]). Left: Cell lysates from untransfected HEK293T cells; Right: Cell lysates from HEK293T cells transfected with RC215340 using transfection reagent MegaTran 2.0 (Cat# [TT210002]).