

Product datasheet for **RC215326**

KIFC1 (NM_002263) Human Tagged ORF Clone

Product data:

Product Type:	Expression Plasmids
Product Name:	KIFC1 (NM_002263) Human Tagged ORF Clone
Tag:	Myc-DDK
Symbol:	KIFC1
Synonyms:	HSET; KNSL2
Mammalian Cell Selection:	Neomycin
Vector:	pCMV6-Entry (PS100001)
E. coli Selection:	Kanamycin (25 ug/mL)



[View online »](#)

ORF Nucleotide
Sequence:

>RC215326 representing NM_002263
Red=Cloning site Blue=ORF Green=Tags(s)

TTTTGTAATACGACTCACTATAGGGCGGCCGGGAATTCGTCGACTGGATCCGGTACCGAGGAGATCTGCC
GCCGCGATCGCC

ATGGATCCGCAGAGGTCCCCCTATTGGAAGTAAAGGGGAACATAGAAGTGAAGAGACCTCTGATTAAGG
CCCTTCCAGCTGCCTCTCTCAGGAAGCAGACTCAAGAGGAGGCCTGACCAGATGGAAGATGGCCTGGA
GCCTGAGAAGAAACGGACAAGAGGCCTGGGTGCAACGACCAAAATTACCACATCCACCCCAAGAGTTCCA
TCCCTCACTACAGTGCCACAGACACAAGGCCAGACCACAGCTCAAAAAGTTTCCAAGAAGACAGGACCCC
GGTGTTCACAGCTATTGCCACAGGGTTGAAGAACCAGAAGCCAGTTCCTGCTGTTCTGTCCAGAAGTC
TGGCACATCAGGTGTTCCCTCCATGGCAGGAGGGAAGAAACCCAGCAAACGTCCAGCCTGGGACTTAAAG
GGTCAGTTATGTGACCTAAATGCAGAACTAAAACGGTGCCGTGAGAGGACTCAAACGTTGGACCAAGAGA
ACCAGCAGCTTCAGGACCAGCTCAGAGATGCCAGCAGCAGGTCAAGGCCCTGGGACAGAGCGCACAAC
ACTGGAGGGGCATTTAGCCAAGGTACAGGCCCAGGCTGAGCAGGGCCAACAGGAGCTGAAGAAGTTCGCT
GCTTGTGTCTGGAGCTGGAAGAGCGGCTGAGCACGCAGGAGGGCTTGGTCAAGAGCTTCAGAAAAAC
AGGTGGAATTGCAGGAAGAACGGAGGGGACTGATGTCCAACTAGAGGAGAAGGAGAGGAGGCTGCAGAC
ATCAGAAGCAGCCCTGTCAAGCAGCCAAGCAGAGGTGGCATCTCTGCGGCAGGAGACTGTGGCCAGGCA
GCCTTACTGACTGAGCGGGAAGAACGTCTTCATGGGCTAGAAAATGGAGCGCCGGCGACTGCACAACCAGC
TGCAGGAAGTCAAGGGCAACATCCGTGTATTCTGCCGGTCCGCCTGTCTGCCGGGGAGCCACTCC
ACCCCTGGCCTCCTCTGTTCCCTCTGGCCCTGGTGGGCCCTGTATCCTCAACCCGCTTAGCCTC
TCCCGTCTGACGAGCGCGTGGGACCTGAGTGGGGCACCAGCTCCCCAACTCGCCATGATTTTTCT
TTGACCGGTATTCCCACCAGGAAGTGGACAGGATGAAGTGTGGAAGAGATTGCCATGCTTGTCCAGTC
AGCCCTGGATGGCTATCCAGTATGCATCTTTGCCATGGCCAGACAGGCAGTGGCAAGACCTTCACAATG
GAGGGTGGCCTGGGGGAGACCCCAAGTTGGAGGGCTGATCCCTCGGGCCTGCGGCACCTCTTCTCTG
TGGCTCAGGAGCTGAGTGGTCAGGGCTGGACCTACAGCTTTGTAGCAAGCTACGTAGAGATCTACAATGA
GACTGTCCGGGACCTGTGGCCACTGGAACCCGGAAGGGTCAAGGGGGGAGTGTGAGATTCGCCGTGCA
GGGCCAGGAGTGAAGGAGCTCACTGTACCAATGCTCGATATGTCCTGTCTCCTGTGAGAAAGAAGTGG
ACGCCCTGCTTCACTGGCCCGCCAGAATCGGGCTGTGGCCCGCACAGCCAGAATGAACGGTCATCAG
CAGCCACAGTGTATTCCAGCTACAGATTTCTGGGAGCACTCCAGCCGAGCCTGCAGTGTGGGGCCCC
CTCAGTCTTGTGACCTGGCCGGGAGTGAAGCACTTGACCCGGCTTAGCCCTCGGCCCGGGAGCGGG
AACGCCTTCGGGAAACACAGGCCATTAACAGCAGCCTGTCCACGCTGGGGCTGGTTATCATGGCCCTGAG
CAACAAGGAGTCCACGTGCCTTACCGAACAGCAAAGTACCTACCTGTGCAGAACTCTCTGGGTGGT
AGTGCTAAGATGCTCATGTTTGTGAACATTTCTCCACTGGAAGAGAAGCTCTCCGAGTCCCTCAACTCTC
TACGCTTTGCCTCAAGGTGAACAGTGTGTTATTGGTACTGCTCAGGCCAACAGGAAG

ACGCGTACGCGGCCGCTCGAGCAGAACTCATCTCAGAAGAGGATCTGGCAGCAATGATATCCTGGATT
ACAAGGATGACGACGATAAGGTTTAA

Protein Sequence: >RC215326 representing NM_002263
Red=Cloning site Green=Tags(s)

MDPQRSPLLEVKGNIELKRPLIKAPSQLPLSGSRLKRRPDQMEDGLEPEKKRTRGLGATTKITTSHPRPV
 SLTTVPQTQGQTAAQKVSKKTGPRCSTAIATGLKNQKPVAVPVQKSGTSGVPPMAGGKKPSKRPADLK
 GQLCDLNAELKRCRERTQTLDQENQQLQDQLRDAQQVKALGTERTTLEGLAKVQAQAEQGGQELKNLR
 ACVLELEERLSTQEGLVQELQKKQVELQEERRGLMSQLEEKERRLQTSAAALSSSQAEVASLRQETVAQA
 ALLTEREERLHGLEMERRRLHNQLQELKGNIRVFCRVRPVLPGPEPTPPPGLLLFPSGPGGSDPPTRL
 SRSDERRGTL SGAPAPTRHDFSFDRVFPFGSGQDEVFEEIAMLVQSALDGYVPCIFAYGQTGSGKTFTM
 EGGPGDPQLEGLIPRALRHLFSAQELSGQGWYSFVASVVEIYNETVRDLLATGTRKGQGGECEIRRA
 GPGSEELTVTNARYVPVSCEKEVDALLHLARQNRAVARTAQNERSRSRSHSVFQLQISGEHSSRGLQCGAP
 LSLVDLAGSERLDPGLALGPGERERLRETQAINSSLSTLGLVIMALSNKESHVPYRNSKLTYLLQNSLGG
 SAKMLMFVNISPLEENVSELSLSLRFASKVNQCIVGTAQANRK

TRTRPLEQKLISEEDLAANDILDYKDDDDKV

Chromatograms: https://cdn.origene.com/chromatograms/mg3772_c09.zip

Restriction Sites: SgfI-MluI

Cloning Scheme:



ACCN: NM_002263

ORF Size: 2019 bp

OTI Disclaimer: The molecular sequence of this clone aligns with the gene accession number as a point of reference only. However, individual transcript sequences of the same gene can differ through naturally occurring variations (e.g. polymorphisms), each with its own valid existence. This clone is substantially in agreement with the reference, but a complete review of all prevailing variants is recommended prior to use. [More info](#)

OTI Annotation: This clone was engineered to express the complete ORF with an expression tag. Expression varies depending on the nature of the gene.

Components: The ORF clone is ion-exchange column purified and shipped in a 2D barcoded Matrix tube containing 10ug of transfection-ready, dried plasmid DNA (reconstitute with 100 ul of water).

Reconstitution Method:

1. Centrifuge at 5,000xg for 5min.
2. Carefully open the tube and add 100ul of sterile water to dissolve the DNA.
3. Close the tube and incubate for 10 minutes at room temperature.
4. Briefly vortex the tube and then do a quick spin (less than 5000xg) to concentrate the liquid at the bottom.
5. Store the suspended plasmid at -20°C. The DNA is stable for at least one year from date of shipping when stored at -20°C.

RefSeq: [NM_002263.4](#)

RefSeq Size: 2391 bp

RefSeq ORF: 2022 bp

Locus ID: 3833

UniProt ID: [Q9BW19](#)

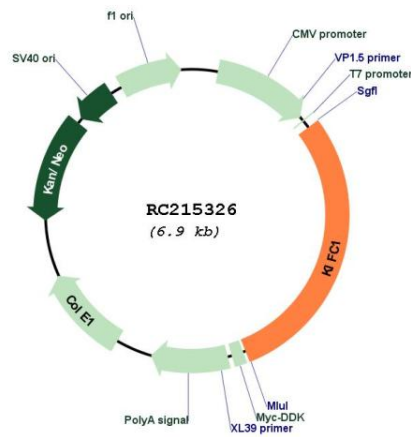
Cytogenetics: 6p21.32

Protein Families: Druggable Genome

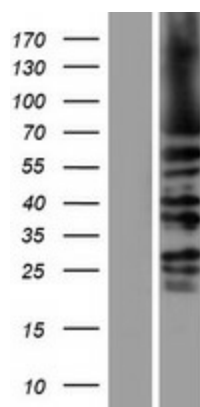
MW: 73.6 kDa

Gene Summary: Minus end-directed microtubule-dependent motor required for bipolar spindle formation (PubMed:15843429). May contribute to movement of early endocytic vesicles (By similarity). Regulates cilium formation and structure (By similarity).[UniProtKB/Swiss-Prot Function]

Product images:



Circular map for RC215326



Western blot validation of overexpression lysate (Cat# [LY419443]) using anti-DDK antibody (Cat# [TA50011-100]). Left: Cell lysates from untransfected HEK293T cells; Right: Cell lysates from HEK293T cells transfected with RC215326 using transfection reagent MegaTran 2.0 (Cat# [TT210002]).