

Product datasheet for **RC215320**

IMPDH1 (NM_001102605) Human Tagged ORF Clone

Product data:

Product Type:	Expression Plasmids
Product Name:	IMPDH1 (NM_001102605) Human Tagged ORF Clone
Tag:	Myc-DDK
Symbol:	IMPDH1
Synonyms:	IMPD; IMPD1; IMPDH-I; LCA11; RP10; sWSS2608
Mammalian Cell Selection:	Neomycin
Vector:	pCMV6-Entry (PS100001)
E. coli Selection:	Kanamycin (25 ug/mL)



[View online »](#)

ORF Nucleotide Sequence:

>RC215320 representing NM_001102605
 Red=Cloning site Blue=ORF Green=Tags(s)

TTTTGTAATACGACTCACTATAGGGCGGCCGGAATTCGTCGACTGGATCCGGTACCGAGGAGATCTGCC
 GCC**CGGATCGCC**

ATGGAGGGGCCACTCACTCCACCACCGCTCAGAGGAGCGGAGCCGCGTGTCCGGAGCCGGAGCC
 GGCAACACCCGGACACGAGACGGCGCGCAGCGGTACAGCGCCGACTGCTGCAGGCGCGCTACGAGCC
 CGAGAGCTGTTTCTCCTAGAATATCTTCAGTGGTCTTACTGGCAGGTGTTGGTGTCCAGATGGATCGC
 CTTTCGAGGGCTAGCATGGCGGACTACCTGATCAGCGGGCACCAGGCTACGTGCCGAGGATGGGCTCA
 CCGCGCAGCAGCTCTTCGCCAGCGCCGACGGCCTCACCTACAACGACTTCTGATTCTCCAGGATTCAT
 AGACTTCATAGCTGATGAGGTGGACCTGACCTCAGCCCTGACCCGGAAGATCACGCTGAAGACGCCACTG
 ATCTCTCCCCATGGACTGTGACAGAGGCTGACATGGCCATTGCCATGGCTCTGATGGGAGGTATTG
 GTTTCATTACCACAACGCACCCAGAGTTCAGGCCAACGAGGTGCGGAAGGTCAAGAAGTTTGAACA
 GGGCTTCATCACGACCCTGTGGTGTGAGCCCTCGCACACTGTGGCGATGTGCTGGAGGCCAAGATG
 CGGCATGGCTTCTCTGGCATCCCATCACTGAGACGGGCACCATGGGCAGCAAGCTGGTGGGCATCGTCA
 CCTCCCGAGACATCGACTTTCTTGTGAGAAGGACCACACCACCCTCCTCAGTGAGGTGATGACGCCAAG
 GATTGAACTGGTGGTGGCTCCAGCAGGTGTGACGTTGAAAGAGGCCAAATGAGATCCTGCAGCGTAGCAAG
 AAAGGGAAGTGCCTATCGTCAATGATTGCGATGAGCTGGTGGCCATCATCGCCCGACCCGACCTGAAGA
 AGAACCGAGACTACCCTCGCCCTCAAGGATTCACAGAACGAGCTGCTCTGTGGGCAGCTGTGGGCAC
 CCGTGAGGATGACAAATACCGTCTGGACCTGCTCACCCAGGCGGGCGTCGACGTCATAGTCTGGACTCG
 TCCCAAGGGAATTCGGTGTATCAGATCGCATGGTGATTACATCAAACAGAAGTACCCACCTCCAGG
 TGATTGGGGGAACGTGGTGACAGCAGCCAGGCCAAGAACCTGATTGATGCTGGTGGAGCCGCTCGG
 CGTGGGCATGGGCTGCGGCTCCATCTGCATCACCCAGGAAGTGATGGCCTGTGGTGGGCCCGGCACT
 GCTGTGTACAAGGTGGCTGAGTATGCCCGCGCTTTGGTGTGCCATCATAGCCGATGGCGGCATCCAGA
 CCGTGGGACACGTGGTCAAGGCCCTGGCCCTTGGAGCCTCCACAGTGATGATGGGCTCCCTGCTGGCCGC
 CACTACGGAGGCCCTGGCGAGTACTTCTTCTCAGACGGGTGCGGCTCAAGAAGTACCGGGGCATGGGC
 TCACTGGATGCCATGGAGAAGAGCAGCAGCAGCCAGAAACGATACTTACGCGAGGGGGATAAAGTGAAGA
 TCGCGCAGGGTGTCTCGGCTCCATCCAGGACAAAGATCCATTAGAAGTTCGTGCCCTACCTCATAGC
 AGGCATCCAACACGGCTGCCAGGATATCGGGCCCGCAGCCTGTCTGTCCTTCGGTCCATGATGTACTCA
 GGAGAGCTCAAGTTTGAAGCGGACCATGTCGGCCAGATTGAGGGTGGTGTCCATGGCCTGCACTCTT
 ACGAAAAGCGGCTGTAC

ACGCGTACGCGGCCGCTCGAGCAGAAACTCATCTCAGAAGAGGATCTGGCAGCAAATGATATCCTGGATT
 ACAAGGATGACGACGATAAGGTTTAA

Protein Sequence:

>RC215320 representing NM_001102605
 Red=Cloning site Green=Tags(s)

MEGPLTPPPLQGGGAAVPEPGARQHPGHETAQRYSARLLQAGYEPESCFLELSSVLLAGVGVQMDR
 LRRASMADYLISGGTGYVPEDGLTAQQLFASADGLTYNDFLILPGFIDFIADVDLTSALTRKITLKTPL
 ISSPMDTVTEADMAIAMALMGGIGFIHHNCTPEFQANEVRKVKKFEQGFITDPVVLSPSHTVGDVLEAKM
 RHGFSGIPITETGTMGSKLVGIVTSRDIDFLAEKDHTLLSEVMPRIELVVAPAGVTLKEANEILQRSK
 KGKLPVNDDELVAIIARTDLKKNRDYPLASKDSQKQLL CGAAVGTREDDKYRLDLLTQAGVDVIVLDS
 SQGNSVYQIAMVHYIKQKYPHLQVIGNVVTAQAQKNLIDAGVDGLRVGMGCGSICITQEVMACGRPQGT
 AVYKVAEYARRFVPIIADGGIQTVGHVVKALALGASTVMMGSLLAATTEAPGEYFFSDGVRLKKYRGMG
 SLDAMEKSSSSQKRYFSEGDKVKIAQGVSGSIQDKGSIQKFPYLIAGIQHGCQDIGARSLSVLRSMYS
 GELKFEKRTMSAQIEGGVHGLHSYEKRLY

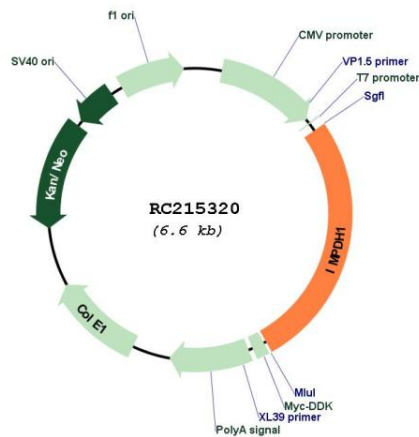
TRTRPLEQKLISEEDLAANDILDYKDDDDKV

Chromatograms:

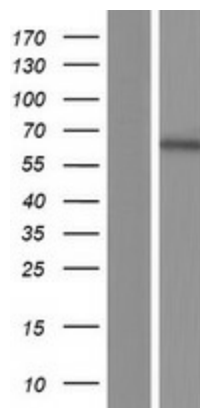
https://cdn.origene.com/chromatograms/mk8068_f07.zip

UniProt ID: [P20839](#)
Cytogenetics: 7q32.1
Protein Families: Druggable Genome
Protein Pathways: Drug metabolism - other enzymes, Metabolic pathways, Purine metabolism
MW: 63.1 kDa
Gene Summary: The protein encoded by this gene acts as a homotetramer to regulate cell growth. The encoded protein is an enzyme that catalyzes the synthesis of xanthine monophosphate (XMP) from inosine-5'-monophosphate (IMP). This is the rate-limiting step in the de novo synthesis of guanine nucleotides. Defects in this gene are a cause of retinitis pigmentosa type 10 (RP10). Several transcript variants encoding different isoforms have been found for this gene. [provided by RefSeq, Dec 2008]

Product images:



Circular map for RC215320



Western blot validation of overexpression lysate (Cat# [LY420173]) using anti-DDK antibody (Cat# [TA50011-100]). Left: Cell lysates from untransfected HEK293T cells; Right: Cell lysates from HEK293T cells transfected with RC215320 using transfection reagent MegaTran 2.0 (Cat# [TT210002]).