

## Product datasheet for **RC215301**

### Cylicin 1 (CYLC1) (NM\_021118) Human Tagged ORF Clone

#### Product data:

Product Type:	Expression Plasmids
Product Name:	Cylicin 1 (CYLC1) (NM_021118) Human Tagged ORF Clone
Tag:	Myc-DDK
Symbol:	Cylicin 1
Synonyms:	CYCL1
Mammalian Cell Selection:	Neomycin
Vector:	pCMV6-Entry (PS100001)
E. coli Selection:	Kanamycin (25 ug/mL)



[View online »](#)

ORF Nucleotide  
Sequence:

>RC215301 ORF sequence  
Red=Cloning site Blue=ORF Green=Tags(s)

TTTTGTAATACGACTCACTATAGGGCGGCCGGGAATTCGTCGACTGGATCCGGTACCGAGGAGATCTGCC  
GCC**CGGATCGCC**

ATGTCTCTCCAAGTTGCTAAAAGTAAACATCAGAACATATGATAATTCATTCCAATCAGTGAATCAA  
GCAGAAAATCATGGAATCAAAAACACTTTGCTTTGACATTTCCAAACCACTCCAGAGAGGTACAAATGA  
TAAATCAAGACCTTTGAAATCACAAATAACAGTTACTAGACATGACAAAAGAAAAGTACAAGAAAGCCAG  
AAACCAGCTCATAAATGGATAAGGCATTCTTCAGAAAAATTTGCAATGGCCACCCATTACACAGCTG  
CCAGGGAACAGACTCCATTCAGACATCTTTATACTTCCAAAACCCATCTTAAAAAGCAGAATATAAAAA  
GTCCAAAGATGAAAAAGGAGGAACACCTTTGAAGAAAGATTCCAAGAAAAAGGAGGTTTCATATGCAACA  
AATCCAGAATCCAAGCAAATAGTAGAAGAGAAAAGTAAAAGACAAAATGAGGCAGATAAAAAGTCCCTTAA  
AATCATCATGAAAATGAACAATCCAAGAAGTCAAAAATCCAGTTCAGAAAATTAATCCAGAATCCAAAA  
TTCTAAGACAGTCTCAAAAAATTTGTTCAAAAAAGATAAGAAAAGATTCAAAGAATCCAAGAAGACAAC  
ACTGAATTCCTACATACAAAAGAACAAATCCAAGAAAGATTTGAAGAGGTCAAAGACTAGTAAATGATCCCA  
TATCAGAGATTTGCTCAGAAAAATAGTTTAAATGTTGATTTCTCATGTTAGTGGGACAGTCTGATGATGA  
ATCCATAAATTTTGATGCATGGTTAAGGAATTACTCACAGAATAATTCAAAGAATTATTCTTTGAAGTAT  
ACAAAGTATACAAAGAAGGACACAAAAAGAATGCAAAGAAAAGCTCTGATGCTGAATCTGAAGACTCAA  
AGGATGCTAAGAAAAGATTCAAAGAAAGTTAAGAAAAATGTCAAGAAAAGATGACAAGAAAAGGATGTAAA  
GAAGGACACAGAGTCTACTGATGCTGAATCTGGAGACTCAAAGGATGAAAGGAAAGATACAAGAAGGAT  
AAGAAAAAATTAAGAAAAGATGACAAGAAAAGGACACAAGAAGTACCCAGAGTCTACTGATACTGAAT  
CAGGAGATGCAAAGGATGCAAGAAATGATTCAGAAAATTTGAAGAAAAGCTTCAAAGAATGATGACAAGAA  
AAAGGATGCAAAGAAAATACATTCTCTACTGATTCTGAATCTGAACTGGAGTCAAAGGAGAGTCAGAAA  
GATGAAAAAAGGATAAAAAAGATTCAAAGACAGATAATAAAAAAGTCTGTCAAGAATGATGAAGAGTCTA  
CTGATGCTGACTCTGAACCGAAGGGAGATTCAAAAAAGGTA AAAAGGATGAAAAGAAGGGGAAGAAAGA  
TTCAAAGAAAGATGACAAAAAGAAGGATGCAAAGAAAATGCAGAATCTACTGAAATGGAATCTGATTTG  
GAGTTAAGAAGGACAAGAAACACTCAAAGGAAAAGAAAGTTCAAAGAAAAGATATCAAGAAGGATGCAA  
GAAAGGACACAGAGTCTACTGATGCTGAATTTGATGAATCTTCCAAGACAGGCTTTAAAACATCTACAAA  
AATCAAAGTTTCAAGATACTGAATCTGAAGAGTCACTATATAAACCTGGGGCTAAGAAGAAAATTGATGAA  
TCAGATGGCACATCTGCAAAATTCAAAGATGGAAGGACTGGAATCAAAGAGAGGATTCAGAATGTCATCCA  
AAAAGACTACATTCAATGAAAAAGGGGAAAAAGCAAGTACAGGTAGAGTTCCTCCATCAAGAGAAAACC  
ACCACTCCCTGCTTGTGAGCCTTCTCTACCATACCAAAGGTCAGACGTCTTTGTTGGTGAAGATGCCT  
CCTCCACCTCAAACCAAGATATGCTCCTTTGCTGAAGCACCGTGGATTATAAGCTGCTT

**ACGCGT**ACGCGGCCGCTCGAGCAGAAAAGTCACTCTCAGAAGAGGATCTGGCAGCAAATGATATCCTGGATT  
ACAAGGATGACGACGATAAGGTTTAA

**Protein Sequence:** >RC215301 protein sequence  
Red=Cloning site Green=Tags(s)

```

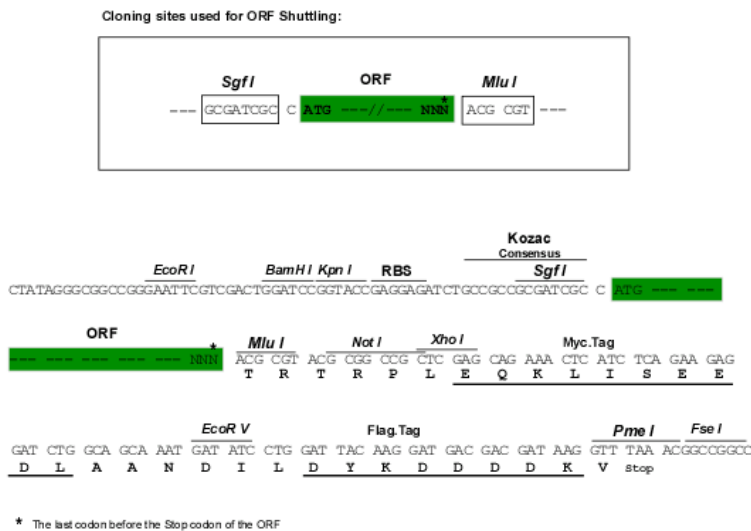
MSLPRLKLVNIRTYDNSIPISESSRKSWNQKHFALTFPKPLQRGTNDKSRPLKSQITVTRHDKRKLEEGQ
KPAHKWIRHSFRKILQWPIIYTAAREQTPFRHL YTSKTHLKKAELYKKSDEKGGTPLKKDSKKKGGSYAT
NPESKQIVEEKTQRONEADKTPLKSSHENEQSKKSSSSETNPESQNSKTVSKNCSQKDKKDSKNSKKTN
TEFLHTKNNPKKDLKRKTSNDPISEICSENSLNVDLMLVGQSDDESINFDAWLRNYSQNSKNYSKLY
TKYTKKDTKKNAKKSSDAESESDDAKKDSKVKKNVKKDKKDVKKDTESTDAESGDSKDERKDTKKD
KKLKKDDKKKDTKKYPESTDTESGDAKARNDNRNLKASKNDDKKKDAKKITFSTDSESELESKESQK
DEKDKKDSKTDNKKSVKNDEESTDADSEPKGDSKKGKDEKKGKDSKDDKKKDAKNAESTEMESDL
ELKDKKHSKEKKGSKDIKDKARKDTESTDAEFDESSKTGFKTSTKIGKSDTESEESLYKPGAKKKIDE
SDGTSANSKMEGLESKRGRMSSKKTTFNEKGEKASTGRVPPSREKPPLPACPSLPSPKVRRLCWCKMP
PPPPKPRYAPLPEAPWIHKLL
  
```

TRTRPLEQKLISEEDLAANDILDYKDDDDKV

**Chromatograms:** [https://cdn.origene.com/chromatograms/mk6605\\_d08.zip](https://cdn.origene.com/chromatograms/mk6605_d08.zip)

**Restriction Sites:** SgfI-MluI

**Cloning Scheme:**



**ACCN:** NM\_021118

**ORF Size:** 1953 bp

**OTI Disclaimer:** The molecular sequence of this clone aligns with the gene accession number as a point of reference only. However, individual transcript sequences of the same gene can differ through naturally occurring variations (e.g. polymorphisms), each with its own valid existence. This clone is substantially in agreement with the reference, but a complete review of all prevailing variants is recommended prior to use. [More info](#)

**OTI Annotation:** This clone was engineered to express the complete ORF with an expression tag. Expression varies depending on the nature of the gene.

**Components:** The ORF clone is ion-exchange column purified and shipped in a 2D barcoded Matrix tube containing 10ug of transfection-ready, dried plasmid DNA (reconstitute with 100 ul of water).

**Reconstitution Method:**

1. Centrifuge at 5,000xg for 5min.
2. Carefully open the tube and add 100ul of sterile water to dissolve the DNA.
3. Close the tube and incubate for 10 minutes at room temperature.
4. Briefly vortex the tube and then do a quick spin (less than 5000xg) to concentrate the liquid at the bottom.
5. Store the suspended plasmid at -20°C. The DNA is stable for at least one year from date of shipping when stored at -20°C.

**RefSeq:** [NM\\_021118.3](#)

**RefSeq Size:** 2143 bp

**RefSeq ORF:** 1956 bp

**Locus ID:** 1538

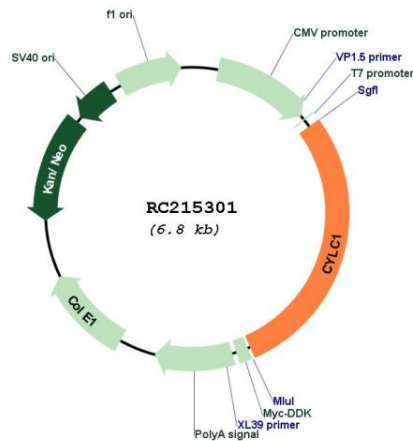
**UniProt ID:** [P35663](#)

**Cytogenetics:** Xq21.1

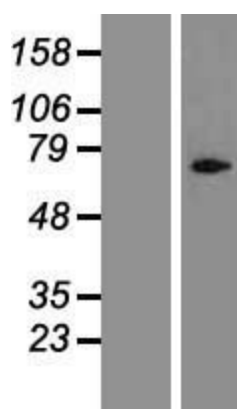
**MW:** 74.2 kDa

**Gene Summary:** This gene encodes a sperm head cytoskeletal protein. The encoded protein is associated with the calyx of spermatozoa and spermatids. Alternative splicing results in multiple transcript variants. [provided by RefSeq, Nov 2012]

**Product images:**



Circular map for RC215301



Western blot validation of overexpression lysate (Cat# [LY412079]) using anti-DDK antibody (Cat# [TA50011-100]). Left: Cell lysates from untransfected HEK293T cells; Right: Cell lysates from HEK293T cells transfected with RC215301 using transfection reagent MegaTran 2.0 (Cat# [TT210002]).