

Product datasheet for **RC215296**

KIRREL2 (NM_032123) Human Tagged ORF Clone

Product data:

Product Type:	Expression Plasmids
Product Name:	KIRREL2 (NM_032123) Human Tagged ORF Clone
Tag:	Myc-DDK
Symbol:	KIRREL2
Synonyms:	FILTRIN; NEPH3; NLG1
Mammalian Cell Selection:	Neomycin
Vector:	pCMV6-Entry (PS100001)
E. coli Selection:	Kanamycin (25 ug/mL)



[View online »](#)

ORF Nucleotide
Sequence:

>RC215296 representing NM_032123
Red=Cloning site Blue=ORF Green=Tags(s)

TTTTGTAATACGACTCACTATAGGGCGGCCGGAATTCGTCGACTGGATCCGGTACCGAGGAGATCTGCC
GCCGCGATCGCC

ATGCTCAGGATGCGGGTCCCCGCCCTCCTCGTCTCTCTCTGCTTCAGAGGGAGAGCAGGCCCGTCGC
CCCATTTCTGCAACAGCCAGAGGACCTGGTGGTCTGCTGGGGAGGAAGCCCGCTGCCGTGTGCTCT
GGGCGCTACTGGGGCTAGTTCAGTGGACTAAGAGTGGGCTGGCCCTAGGGGGCCAAAGGGACCTACCA
GGGTGGTCCCGTACTGGATATCAGGGAATGCAGCCAATGGCCAGCATGACCTCCACATTAGGCCCGTGG
AGCTAGAGGATGAAGCATCATATGAATGTGAGGCTACACAAGCAGGCCTCCGCTCCAGACCAGCCCACT
GCACGTGTGGTCCCCCAGAAGCCCCCAGGTGCTGGGCGGCCCTCTGTGTCTCTGGTTGCTGGAGTT
CCTGCGAACCTGACATGTCGGAGCCGTGGGGATGCCGCCCTACCCCTGAATTGCTGTGGTTCGAGATG
GGTCTGTTGGATGGAGCCACCTTCATCAGACCCTGCTGAAGGAAGGGACCCCTGGGTGAGTGGAGAG
CACCTTAACCCTGACCCCTTTCAGCCATGATGATGGAGCCACCTTTGTCTGCCGGCCCCGGAGCCAGGCC
CTGCCCCAGGAAGAGACACAGCTATCACACTGAGCCTGCACTACCCCCAGAGGTGACTCTGTCTGCTT
CGCCACACACTGTGCAGGAGGGAGAGAAGTCAATTTCTGTGCCAGGCCACAGCCAGCCCTCTGTGTCAC
AGGCTACAGGTGGGCAAAGGGGGCTCTCCGGTCTCGGGGCCCGGGCCAAAGTTAGAGGTCTGGCA
GACGCCTCGTTCTGACTGAGCCCGTGTCTGCGAGGTGACGAACGCCGTGGGTAGCGCCAAACCGCAGTA
CTGCGCTGGATGTGCTGTTTGGGCCGATTCTGCAGGCAAAGCCGGAGCCCGTGTCCGTGGACGTGGGGGA
AGACGCTTCCTCAGTGCCTGGCGCGGGAACCCGCTCCACGGGTAACTGGACCCCGCGGTGGC
GCGCAGGTGCTGGGCTCTGGAGCCACTGCGTCTTCCGTGCGTGGGGCCCGAGGACGCAGGCGACTATG
TGTGCAGAGCTGAGGCTGGGCTATCGGGCCTCGGGGCGCGCCCGGAGGCTCGGCTGACTGTGAACGC
TCCCCCAGTAGTGACCGCCCTGCACTCTGCGCCTGCCTTCTGAGGGGCCCTGCTCGCCTCAGTGTCTG
GTTTTCGCCTCTCCCGCCCAGATGCCGTGGTCTGGTCTTGGGATGAGGGCTTCTGGAGCGGGGTGCG
AGGGCCGGTTCCTGGTGGAGACATTCCTGCCCCAGAGAGCCGCGGGGGACTGGGTCCGGCCCTGATCTC
TGTGCTACACATTTGGGGACCCAGGAGTCTGACTTTAGCAGGAGCTTAACTGCAGTGCCCGGAACCGG
CTGGGCGAGGGAGGTGCCAGGCCAGCCTGGGCCGTAGAGACTTGTGCCACTGTGCGGATAGTGGCCG
GAGTGGCCGCTGCCACCACAACCTCTCTTATGGTCATCACTGGGGTGGCCCTCTGCTGTGGCGCCACAG
CAAGGCCTCAGCCTTTTCTCCGAGCAAAGAACCTGATGCGAATCCCTGGCAGCAGCGACGGCTCCAGT
TCACGAGGTCTGAAGAAGAGGAGACAGGCAGCCGCGAGGACCGGGGCCATTGTGCACACTGACCACA
GTGATCTGGTTCTGGAGGAGGAAGGACTCTGGAGACCAAGGACCAACCAACCGTTACTACAAGTCCG
AGGAGTCACTCCACCCGCTCTCCAGACTCACGTGTGACATCTTCCAATGGAAGAGTCTGGGATCTCC
AATTGCCA

ACGCGTACGCGGCCGCTCGAGCAGAACTCATCTCAGAAGAGGATCTGGCAGCAAATGATATCCTGGATT
ACAAGGATGACGACGATAAGGTTAA

Reconstitution Method:

1. Centrifuge at 5,000xg for 5min.
2. Carefully open the tube and add 100ul of sterile water to dissolve the DNA.
3. Close the tube and incubate for 10 minutes at room temperature.
4. Briefly vortex the tube and then do a quick spin (less than 5000xg) to concentrate the liquid at the bottom.
5. Store the suspended plasmid at -20°C. The DNA is stable for at least one year from date of shipping when stored at -20°C.

RefSeq: [NM_032123.7](#)

RefSeq Size: 2153 bp

RefSeq ORF: 1902 bp

Locus ID: 84063

UniProt ID: [Q6UWL6](#)

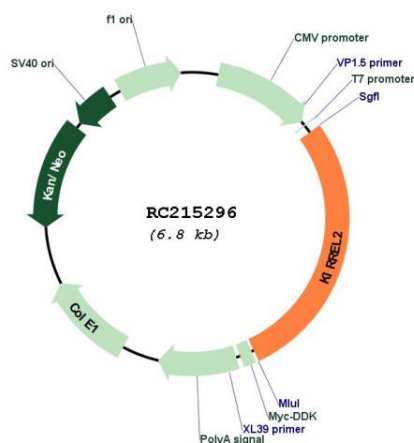
Cytogenetics: 19q13.12

Protein Families: Transmembrane

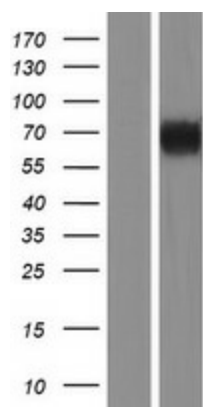
MW: 66.9 kDa

Gene Summary: This gene encodes a type I transmembrane protein and member of the immunoglobulin superfamily of cell adhesion molecules. The encoded protein localizes to adherens junctions in pancreatic beta cells and regulates insulin secretion. Autoantibodies against the encoded protein have been detected in serum from patients with type 1 diabetes. This gene may also play a role in glomerular development and decreased expression of this gene has been observed in human glomerular diseases. This gene and the related opposite-strand gene nephrin (GeneID: 527362) are regulated by a bidirectional promoter. [provided by RefSeq, Jul 2016]

Product images:



Circular map for RC215296



Western blot validation of overexpression lysate (Cat# [LY410052]) using anti-DDK antibody (Cat# [TA50011-100]). Left: Cell lysates from untransfected HEK293T cells; Right: Cell lysates from HEK293T cells transfected with RC215296 using transfection reagent MegaTran 2.0 (Cat# [TT210002]).