

Product datasheet for **RC215292**

TBCEL (NM_152715) Human Tagged ORF Clone

Product data:

Product Type:	Expression Plasmids
Product Name:	TBCEL (NM_152715) Human Tagged ORF Clone
Tag:	Myc-DDK
Symbol:	TBCEL
Synonyms:	EI; LRRC35
Mammalian Cell Selection:	Neomycin
Vector:	pCMV6-Entry (PS100001)
E. coli Selection:	Kanamycin (25 ug/mL)



[View online »](#)

ORF Nucleotide Sequence:

>RC215292 ORF sequence
 Red=Cloning site Blue=ORF Green=Tags(s)

TTTTGTAATACGACTCACTATAGGGCGGCCGGAATTCGTCGACTGGATCCGGTACCGAGGAGATCTGCC
 GCC**CGCATCGCC**

ATGGATCAACCTAGTGAAGAAGTTTCATGCAAGTATTATGTGAAAAATATAGTCTGAAAAATTTTCCTT
 ATCGCCGTGGCCGGGATGGGAGTCCATGTCCCAGCCACACCTCAGGGCTCTCCTATGAAAAGATCGCCT
 CAACCTCCCAAGTGTACTAGTGTGAACAGCTGTGGAATAACCTGTGCAGGAGATGAAAAAGAAATGCT
 GCTTTCTGCGCTCATGTGTGGAACTAGATCTTTCTGACAACAACTCGAAGACTGGCATGAGGTGAGTA
 AAATTGTGTCAAATGTTCTCAGTTGGAGTTTCTAAACCTGAGTTCCAACCTCTGAATTTGTCGGTTTT
 AGAAAGAACATGTGCTGGGTCTTCTCTGGGTTGCGAACTTGCTCAACAACAGCAAAGCTTCTTGG
 GAGACGGTCCACATGATACTACAGGAGTTACCAGATTTGGAGGAGCTCTTCTGTGCCTAATGACTATG
 AACAGTGTCTTGTCTTCTATTTGCTGTCATTCTTAAAGCTACTACATATAACAGACAATAACCTCCA
 AGACTGGACTGAAATACGAAAGTTAGGAGTTATGTTTCCTTCACTGGATACCTCGTCTGGCCAACAAT
 CATTTGAATGCTATTGAGGAGCCTGATGATTCATTGGCCAGGTTGTTTCTAATCTTCGATCCATCAGCC
 TCCACAAGTCAGGTTTGCAGTCTGGGAAGACATTGATAAACTAAATTCATTTCCAAACTGGAAGAAGT
 GAGATTGTTAGGAATTCCTTCTGTCAGCCATATACCACCGAGGAGCGAAGGAAATGGTAAATAGCCAGA
 TTGCCATCAGTTTCCAACTTAATGGCAGCGTTGTTACTGATGGTGAACGAGAAGATTCTGAGAGATTTT
 TTATTCGTTACTATGTGGATGTTCCACAGGAAGAAGTGCATTGAGGATCATGAAGTACTACTAAATA
 TGGGAAGTTGGAGCCTTTGGCAGAAGTGGACCTAAGACCCAGAGCAGTGCAAAAGTAGAAGTCCACTTT
 AACGATCAGGTGGAAGAAATGAGCATTGCTCTGGACCAACAGTGGCAGAAGTAAAGAAACAGTTAAAAA
 CTCTAGTACAATTACCCACAAGCAACATGCTTCTCTACTATTTTGACCATGAAGCACCTTTGGCCAGA
 GAAATGAAGTACAGCTCTCGGGCATTGCATTCCTTTGGCATTAGGGATGGAGATAAAATTTACGTGGAA
 TCCAAAACAAAA

ACGCGTACGCGGCCGCTCGAGCAGAAACTCATCTCAGAAGAGGATCTGGCAGCAATGATATCCTGGATT
 ACAAGGATGACGACGATAAGGTTTAA

Protein Sequence:

>RC215292 protein sequence
 Red=Cloning site Green=Tags(s)

MDQPSGRSFMQVLCEKYSPEFNPYRRGPGMGVHVPATPQGSPMKDRLNLPVSVLVLNSCGITCAGDEKEIA
 AFCAHVSELDLSDNKLEDWHEVSKIVSNVPQLEFLNLSNPLNLSVLERTCAGSFGVRKLVLNNSKASW
 ETVHMILQELPDLEELFLCLNDYETVSCPSICCHSLKLLHITDNNLQDWTEIRKLGVMFPSLDTLVLANN
 HLNAIIEEPDLSLARLFPNLRISLHKSGLQSWEDIDKLNSFPKLEEVRLGLIPLLPYTTERRKLVIA
 LPSVSKLNGSVVTDGEREDSERFFIRYYVDVPQEEVPRYHELITKYGKLEPLAEVDLRPQSSAKVEVHF
 NDQVEEMSIRLDQTVAELEKQKQLTLVQLPTSNMLLYYFDHEAPFGPEEMKYSSRALHSFGIRDGDKIYVE
 SKTK

TRTRPLEQKLISEEDLAANDILDYKDDDDKV

Chromatograms:

https://cdn.origene.com/chromatograms/mk6443_e04.zip

Restriction Sites:

Sgfl-Mlul

Cloning Scheme:


ACCN: NM_152715

ORF Size: 1272 bp

OTI Disclaimer: The molecular sequence of this clone aligns with the gene accession number as a point of reference only. However, individual transcript sequences of the same gene can differ through naturally occurring variations (e.g. polymorphisms), each with its own valid existence. This clone is substantially in agreement with the reference, but a complete review of all prevailing variants is recommended prior to use. [More info](#)

OTI Annotation: This clone was engineered to express the complete ORF with an expression tag. Expression varies depending on the nature of the gene.

Components: The ORF clone is ion-exchange column purified and shipped in a 2D barcoded Matrix tube containing 10ug of transfection-ready, dried plasmid DNA (reconstitute with 100 ul of water).

Reconstitution Method:

1. Centrifuge at 5,000xg for 5min.
2. Carefully open the tube and add 100ul of sterile water to dissolve the DNA.
3. Close the tube and incubate for 10 minutes at room temperature.
4. Briefly vortex the tube and then do a quick spin (less than 5000xg) to concentrate the liquid at the bottom.
5. Store the suspended plasmid at -20°C. The DNA is stable for at least one year from date of shipping when stored at -20°C.

RefSeq: [NM_152715.5](#)

RefSeq Size: 4041 bp

RefSeq ORF: 1275 bp

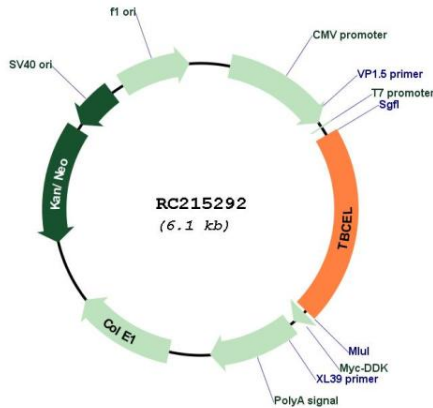
Locus ID: 219899

UniProt ID: [Q5QJ74](#)

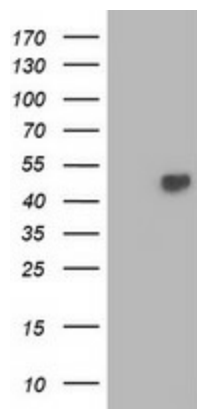
Cytogenetics: 11q23.3

Domains: LRR
Protein Families: Druggable Genome
MW: 48.2 kDa
Gene Summary: Acts as a regulator of tubulin stability.[UniProtKB/Swiss-Prot Function]

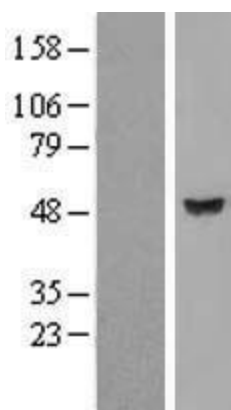
Product images:



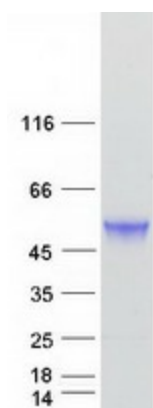
Circular map for RC215292



HEK293T cells were transfected with the pCMV6-ENTRY control (Cat# [PS100001], Left lane) or pCMV6-ENTRY TBCEL (Cat# RC215292, Right lane) cDNA for 48 hrs and lysed. Equivalent amounts of cell lysates (5 ug per lane) were separated by SDS-PAGE and immunoblotted with anti-TBCEL (Cat# [TA502672]). Positive lysates [LY407335] (100ug) and [LC407335] (20ug) can be purchased separately from OriGene.



Western blot validation of overexpression lysate (Cat# [LY427127]) using anti-DDK antibody (Cat# [TA50011-100]). Left: Cell lysates from untransfected HEK293T cells; Right: Cell lysates from HEK293T cells transfected with [RC225691] using transfection reagent MegaTran 2.0 (Cat# [TT210002]).



Coomassie blue staining of purified TBCEL protein (Cat# [TP315292]). The protein was produced from HEK293T cells transfected with TBCEL cDNA clone (Cat# RC215292) using MegaTran 2.0 (Cat# [TT210002]).