

Product datasheet for **RC215290**

PATZ1 (NM_032050) Human Tagged ORF Clone

Product data:

Product Type:	Expression Plasmids
Product Name:	PATZ1 (NM_032050) Human Tagged ORF Clone
Tag:	Myc-DDK
Symbol:	PATZ1
Synonyms:	dj400N23; MAZR; PATZ; RIAZ; ZBTB19; ZNF278; ZSG
Vector:	pCMV6-Entry (PS100001)
E. coli Selection:	Kanamycin (25 ug/mL)
Cell Selection:	Neomycin



[View online »](#)

ORF Nucleotide
Sequence:

>RC215290 representing NM_032050
Red=Cloning site Blue=ORF Green=Tags(s)

TTTTGTAATACGACTCACTATAGGGCGGCCGGGAATTCGTCGACTGGATCCGGTACCGAGGAGATCTGCC
GCCGCGATCGCC

ATGGAGCGGGTGAACGACGCTTCGTGCGGCCGTCTGGCTGCTACACATACCAGGTGAGCAGACACAGCA
CGGAGATGCTGCACAACCTGAACCAGCAGCGCAAAAACGCGGGCGCTTCGCGACGTGCTTTCGGGT
AGGCGACGAGAGCTTCCAGCGCACCGCGCCGTGCTGGCCGCTGCAGCGAGTACTTTGAGTCGGTGTT
AGCGCCAGTTGGGCGACGGCGGAGCTGCGGACGGGGTCCGGCTGATGTAGGGGCGCGACGGCAGCAC
CAGGGCGGGGGCGGGGCGAGCCGGGAGCTGGAGATGCACACTATCAGCTCCAAGGATTTGGGGACAT
TCTGGACTTCGCCTACACTTCCCGCATCGTGGTGCCTTGGAGAGCTTCCCGAACTCATGACGGCCGCC
AAGTTCCTGCTGATGAGGTGGTTATCGAGATCTGCCAGGAAGTCATCAAACAGTCCAACGTACAGATCC
TGGTACCCCTGCCCGCGCCGATATAATGCTCTTTCGCCCCCTGGGACCTCGGACTTGGCTTCCCTTT
GGACATGACCAACGGGGCAGCCTTGGCAGCCAACAGCAATGGCATCGCCGCGCAGCATGCAGCCAGAGGAG
GAGGCAGCTCGGGCGGCTGGTGCAGCCATTGCAGGCCAAGCCTCTTTGCCTGTGTACCTGGGGTGGACC
GCTTGCCCATGGTGGCTGGACCCCTATCCCCCAACTGCTGACTTCCCCATTCCCCAGTGTGGCATCCAG
TGCCCCCTCCCCTGACTGGCAAGCGAGGCCGGGGCCGCCAAGGAAGGCCAACCTGCTGGACTCAATGTTT
GGTCCCAGGGGCGCTGAGGGAGGCAGGCATCCTTCCATGCGGTCTATGTGTAAGGTGTTCACTGATG
CCAACCGGCTCCGGCAGCAGGAGGCCAGCAGGTGTACCAGCCTCCAGCTGGGCTACATCGACCTTCC
TCCTCCGAGGCTGGGTGAGAATGGGCTACCCATCTCTGAAGACCCCGACGGCCCCGAAAGAGGAGCCGG
ACCAGGAAGCAGGTGGCTTGTGAGATCTCGGGCAAGATCTTCCGTGATGTGTATCATCTTAACCGGCACA
AGCTGTCCCCTGTTGGGAGAAGCCCTACTCCTGCCCTGTGTGGGTTGCGGTTCAAGAGAAAAGACCG
CATGTCTTACCATGTGCGGTCCCATGATGGGTCCGTGGCAAGCCTTACATCTGCCAGAGCTGTGGGAAA
GGCTTCTCCAGGCTGATCACTTGAACGACATATCAAGCAGGTGCACACTTCTGAGCGGCTCACAAAT
GTCAGACCTGCAATGCTTCTTTGCCACCCGAGACCGTCTGCGCTCCACCTGGCCTGTCATGAAGACAA
GGTGCCCTGCCAGGTGTGTGGGAAGTACTTGGGGCAGCATAACATGGCAGACCACCTGAAGAAGCACAGC
GAGGGGCCAGCAACTTCTGCAGTATCTGTAACCGAGAAGGCCAGAAATGCTCACATCAGGATCCGATTG
AGAGCTCTGACTCCTATGGTGACCTCTCAGATGCCAGCGACCTGAAGACGCCAGAGAAGCAGAGTGCCAA
TGGCTCTTCTCCTGCGACATGGCAGTCCCCAAAAACAAAATGGAGTCTGATGGGAGAAGAAGTACCCA
TGCCCTGAATGTGGGAGCTTCTTCGCTCTAAGTCTACTTGAACAAACACATCCAGAAGGTGCATGTCC
GGGCTCTCGGGGGCCCCCTGGGGGACCTGGGCCCTGCCCTTGGCTCACCTTCTCTCCTCAGCAGAACAT
GTCTCTCCTCGAGTCTTTGGGTTTCAGATTGTTTCAGTCGGCATTTCGTCATCTTTAGTAGATCCTGAG
GTTGACCAGCAGCCCATGGGGCCTGAAGGGAAA

ACGCGTACGCGGCCGCTCGAGCAGAACTCATCTCAGAAGAGGATCTGGCAGCAATGATATCCTGGATT
ACAAGGATGACGACGATAAGGTTTAA

Protein Sequence: >RC215290 representing NM_032050
 Red=Cloning site Green=Tags(s)

MERVNDASCGPSGCYTYQVSRHSTEMLHNLNQQRKNNGGRFCVLLRVGDESFP AHRVLAACSEYFESVF
 SAQLGDGGAADGGPADVGGATAAPGGGAGGSRELEMHTISSKVF GDILDFAYTSRIVVRLESFPELMTAA
 KFLLMRSVIEICQEVIKQSNVQILVPPARADIMLFRPPGTSDLGFPLDMTNGAALAANSNGIAGSMQPEE
 EAARAAGAAIAGQASLPVLPVDRILPMVAGPLSPQLLTSPPFVSASSAPPLTGKRGRGRPRKANLLDSMF
 GSPGGLREAGILPCGLCGKVF TDANRLRQHEAQHGVTSLQLGYIDLPPRRLGENGLPISEDPGPRKRSR
 TRKQVACEICGKIFRDVYHLNRHKLSHSGEKPYSCPVCGLRFKRKDRMSYHVRSHDGSVGPYICQSCGK
 GFSRPDHLNGHIKQVHTSERPHKCQTCNASFATRDLRSHLACHEDKVPQVCGKYLRAAYMADHLKKHS
 EGPSNFCICNREGQKCSHQDPIESSDSYGDLSADSLKTPEKQSANGSFSCDMAVPKNKME SDGEKKYP
 CPEGCSFFRSKSYLNKHIQKVHVRALGGPLGDLGPALGSPFSPQQNMSLLESFGFQIVQSAFASLVDPE
 VDQQPMGPEGK

TRTRPLEQKLISEEDLAANDILDYKDDDDKV

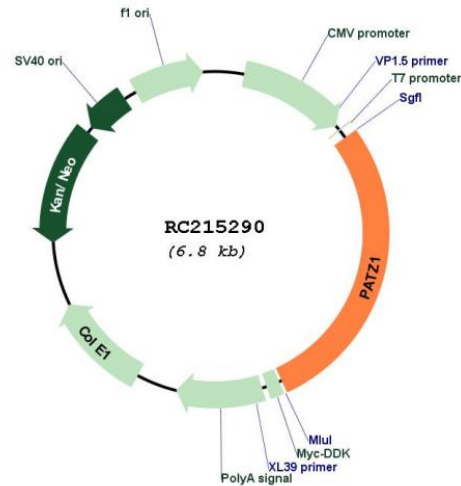
Restriction Sites:

SgfI-MluI

Cloning Scheme:



Plasmid Map:



ACCN: NM_032050

ORF Size: 1923 bp

OTI Disclaimer: The molecular sequence of this clone aligns with the gene accession number as a point of reference only. However, individual transcript sequences of the same gene can differ through naturally occurring variations (e.g. polymorphisms), each with its own valid existence. This clone is substantially in agreement with the reference, but a complete review of all prevailing variants is recommended prior to use. [More info](#)

OTI Annotation: This clone was engineered to express the complete ORF with an expression tag. Expression varies depending on the nature of the gene.

Components: The ORF clone is ion-exchange column purified and shipped in a 2D barcoded Matrix tube containing 10ug of transfection-ready, dried plasmid DNA (reconstitute with 100 ul of water).

Reconstitution Method:

1. Centrifuge at 5,000xg for 5min.
2. Carefully open the tube and add 100ul of sterile water to dissolve the DNA.
3. Close the tube and incubate for 10 minutes at room temperature.
4. Briefly vortex the tube and then do a quick spin (less than 5000xg) to concentrate the liquid at the bottom.
5. Store the suspended plasmid at -20°C. The DNA is stable for at least one year from date of shipping when stored at -20°C.

RefSeq: [NM_032050.2](#)

RefSeq Size:	3674 bp
RefSeq ORF:	1926 bp
Locus ID:	23598
UniProt ID:	Q9HBE1
Cytogenetics:	22q12.2
Domains:	BTB, AT_hook, zf-C2H2
Protein Families:	Transcription Factors
MW:	68.9 kDa
Gene Summary:	<p>The protein encoded by this gene contains an A-T hook DNA binding motif which usually binds to other DNA binding structures to play an important role in chromatin modeling and transcription regulation. Its Poz domain is thought to function as a site for protein-protein interaction and is required for transcriptional repression, and the zinc-fingers comprise the DNA binding domain. Since the encoded protein has typical features of a transcription factor, it is postulated to be a repressor of gene expression. In small round cell sarcoma, this gene is fused to EWS by a small inversion of 22q, then the hybrid is thought to be translocated (t(1;22)(p36.1;q12). The rearrangement of chromosome 22 involves intron 8 of EWS and exon 1 of this gene creating a chimeric sequence containing the transactivation domain of EWS fused to zinc finger domain of this protein. This is a distinct example of an intra-chromosomal rearrangement of chromosome 22. Four alternatively spliced transcript variants are described for this gene. [provided by RefSeq, Jul 2008]</p>