

Product datasheet for **RC215283**

TMEM16K (ANO10) (NM_018075) Human Tagged ORF Clone

Product data:

Product Type:	Expression Plasmids
Product Name:	TMEM16K (ANO10) (NM_018075) Human Tagged ORF Clone
Tag:	Myc-DDK
Symbol:	TMEM16K
Synonyms:	SCAR10; TMEM16K
Mammalian Cell Selection:	Neomycin
Vector:	pCMV6-Entry (PS100001)
E. coli Selection:	Kanamycin (25 ug/mL)



[View online »](#)

ORF Nucleotide
Sequence:

>RC215283 representing NM_018075
Red=Cloning site Blue=ORF Green=Tags(s)

TTTTGTAATACGACTCACTATAGGGCGGCCGGAATTCGTCGACTGGATCCGGTACCGAGGAGATCTGCC
GCCGCGATCGCC

ATGAAAGTGACCTTATCAGCTTTGGATACTTCTGAGAGTTCTTTACACCTTTGGTGGTCATAGAACTTG
CTCAGGATGTCAAAGAAGAAACCAAGAATGGCTGAAAAACAGAATTATAGCTAAAAAAGATGGAGG
TGCCAGTTGTTGTTAGACCATTGTTAAATAAATATGAACAAGAACTAGAAAAATCAGAACTTATAT
CTTGTTGGTGCCTCCAAGATTAGAATGTTACTAGGGCAGAAAGCAGTGGGATTGGTAAAAGAGTGAATG
ATAACACCATGAGAGCCTTACATACAGAACAGACAGAACTTCAAAGTTTTGATGATAACAATGATGA
TTTCTGACAATGGCAGAATGTCAATTCATTATCAAACATGAACTTGAAAATCTTAGAGCTAAAGATGAA
AAAATGATCCCTGGTTACCTCAGGCAAAGTTGTATCCAGGAAAATCATTGTTGAGAAGATTGCTCACGT
CTGGCATCGTGATTACAGGTGTTCCACTGCATGACAGTGAAGCCCTGAAGAAGCTTGAGGACACCTGGTA
CACTCGGTTTGCTTTGAAGTATCAGCCATAGACAGTATTCGTGGCTACTTTGGGAAACAATTGCTCTG
TACTTTGGATTTTTGGAGATTTCACTTTTGCATTAATCCCATGGCTGTATTGGGTTACCTTACTACT
TGTTTGTGTGGGAAGACTATGACAAGTACGTGATCTTTGCCTCGTTCAACCTCATCTGGTCCACGGTGT
TCTGGAAGTGTGGAAGCGTGGCTGTGCCAATGACCTACAGGTGGGGGACACTGCTCATGAAGAGAAA
TTTGAGGAGCCCCGGCCAGGATTCATGGTGTCTTGGGTATCAATTCCATCACTGGGAAGGAGGAGCCTC
TGTACCCAGCTACAAGAGACAGTTGCCATTTACCTGGTCTCCCTGCCATTCGTGTGCCTCTGCCTCTA
TTTCTCACTGTATGTATGATGATTTACTTCGACATGGAGGTTTGGGCCCTGGGTCTACATGAGAACAGC
GGGTCTGAGTGGACCAGTGTCTGTTGTATGTGCCAGCATCATCTATGCCATTGTGATTGAGATCATGA
ATCGTCTCTATCGATATGCTGCCGAGTTTTTAACTTCATGGGAGAATCACAGATTGGAATCTGCCTATCA
GAACCATCTAATTCTGAAAGTTTTAGTGTCAACTTCCTCAATTGCTTTGCCTCACTCTTCTATATTGCC
TTTGTCTTGAAAGATATGAAGCTTTTGCGCCAGAGCTTGGCCACTCTCCTAATTACCTCCAGATCTCA
ACCAAATTATGGAATCTTTTCTCCTTATTGGCTCAAAGGAAGCATGGTGTGCGGGTGAAGAGGAAGGT
GCAGGCTTTAAAGGCAGACATTGATGCTACATTATGAACAAGTCATCCTGGAAAAAGAAATGGGAAT
TATTTGGGCACCTTTGATGATTACTTGGAGTTATTCCTGCAGTTTGGTTATGTGAGCCTTTTCTCCTGTG
TTTACCCATTAGCAGCTGCCTTTGCTGTGTTAAATAACTTCACTGAAGTAAATTCAGATGCCTTAAAAAT
GTGCAGGGTCTTCAAACGTCCATTCTCAGAACCTCAGCCAATATTGGTGTGTGGCAGTTGGCTTTTGAA
ACGATGAGTGTTATATCTGTGGTCACTAACTGTGCGCTGATTGGAATGTCACCACAAGTGAATGCAGTCT
TTCCAGAATCAAAGCAGACCTCATTGATTGTAGTAGCAGTGGAGCACGCACTCCTGGCTTTAAAGTT
TATACTTGCAATTTGCCATACCTGATAAGCCACGGCATATCCAGATGAAACTAGCCAGACTGGAATTTGAG
TCTTTGGAGGCACTCAAGCAGCAGCAAATGAAGCTCGTGACCGAGAACCTGAAGGAGGAACCAATGGAAA
GCGGGAAGGAGAAGGCAACC

ACGCGTACGCGGCCGCTCGAGCAGAACTCATCTCAGAAGAGGATCTGGCAGCAAATGATATCCTGGATT
ACAAGGATGACGACGATAAGGTTTAA

Protein Sequence: >RC215283 representing NM_018075
Red=Cloning site Green=Tags(s)

MKVTL S A L D T S E S S F T P L V V I E L A Q D V K E E T K E W L K N R I A K K K D G G A Q L L F R P L L N K Y E Q E T L E N Q N L Y
 L V G A S K I R M L L G A E A V G L V K E C N D N T M R A F T Y R T R Q N F K G F D D N D D F L T M A E C Q F I I K H E L E N L R A K D E
 K M I P G Y P Q A K L Y P G K S L L R R L L T S G I V I Q V F P L H D S E A L K K L E D T W Y T R F A L K Y Q P I D S I R G Y F G E T I A L
 Y F G F L E Y F T F A L I P M A V I G L P Y Y L F V W E D Y D K Y V I F A S F N L I W S T V I L E L W K R G C A N M T Y R W G T L L M K R K
 F E E P R P G F H G V L G I N S I T G K E E P L Y P S Y K R Q L R I Y L V S L P F V C L C L Y F S L Y V M M I Y F D M E V W A L G L H E N S
 G S E W T S V L L Y V P S I I Y A I V I E I M N R L Y R Y A A E F L T S W E N H R L E S A Y Q N H L I L K V L V F N F L N C F A S L F Y I A
 F V L K D M K L L R Q S L A T L L I T S Q I L N Q I M E S F L P Y W L Q R K H G V R V K R K V Q A L K A D I D A T L Y E Q V I L E K E M G T
 Y L G T F D D Y L E L F L Q F G Y V S L F S C V Y P L A A A F A V L N N F T E V N S D A L K M C R V F K R P F S E P S A N I G V W Q L A F E
 T M S V I S V V T N C A L I G M S P Q V N A V F P E S K A D L I L I V V A V E H A L L A L K F I L A F A I P D K P R H I Q M K L A R L E F E
 S L E A L K Q Q M K L V T E N L K E E P M E S G K E K A T

TRTRPLEQKLISEEDLAANDILDYKDDDDKV

Chromatograms: https://cdn.origene.com/chromatograms/mg4461_h07.zip

Restriction Sites: SgfI-MluI

Cloning Scheme:

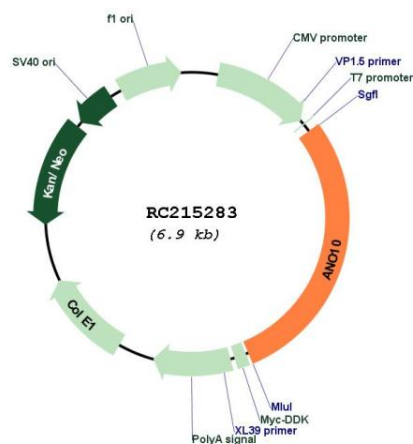


ACCN: NM_018075

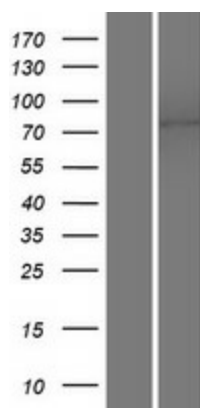
ORF Size: 1980 bp

OTI Disclaimer:	<p>Due to the inherent nature of this plasmid, standard methods to replicate additional amounts of DNA in E. coli are highly likely to result in mutations and/or rearrangements. Therefore, OriGene does not guarantee the capability to replicate this plasmid DNA. Additional amounts of DNA can be purchased from OriGene with batch-specific, full-sequence verification at a reduced cost. Please contact our customer care team at custsupport@origene.com or by calling 301.340.3188 option 3 for pricing and delivery.</p> <p>The molecular sequence of this clone aligns with the gene accession number as a point of reference only. However, individual transcript sequences of the same gene can differ through naturally occurring variations (e.g. polymorphisms), each with its own valid existence. This clone is substantially in agreement with the reference, but a complete review of all prevailing variants is recommended prior to use. More info</p>
OTI Annotation:	<p>This clone was engineered to express the complete ORF with an expression tag. Expression varies depending on the nature of the gene.</p>
Components:	<p>The ORF clone is ion-exchange column purified and shipped in a 2D barcoded Matrix tube containing 10ug of transfection-ready, dried plasmid DNA (reconstitute with 100 ul of water).</p>
Reconstitution Method:	<ol style="list-style-type: none">1. Centrifuge at 5,000xg for 5min.2. Carefully open the tube and add 100ul of sterile water to dissolve the DNA.3. Close the tube and incubate for 10 minutes at room temperature.4. Briefly vortex the tube and then do a quick spin (less than 5000xg) to concentrate the liquid at the bottom.5. Store the suspended plasmid at -20°C. The DNA is stable for at least one year from date of shipping when stored at -20°C.
RefSeq:	NM_018075.5
RefSeq Size:	2743 bp
RefSeq ORF:	1983 bp
Locus ID:	55129
UniProt ID:	Q9NW15
Cytogenetics:	3p22.1-p21.33
Domains:	DUF590
Protein Families:	Transmembrane
MW:	76.1 kDa
Gene Summary:	<p>The transmembrane protein encoded by this gene belongs to the anoctamin family of calcium-activated chloride channels, also known as the transmembrane 16 family. The encoded protein contains eight transmembrane domains with cytosolic N- and C-termini. Defects in this gene may cause autosomal recessive spinocerebellar ataxia-10. Alternative splicing results in multiple transcript variants. [provided by RefSeq, Oct 2016]</p>

Product images:



Circular map for RC215283



Western blot validation of overexpression lysate (Cat# [LY413334]) using anti-DDK antibody (Cat# [TA50011-100]). Left: Cell lysates from untransfected HEK293T cells; Right: Cell lysates from HEK293T cells transfected with RC215283 using transfection reagent MegaTran 2.0 (Cat# [TT210002]).