

Product datasheet for **RC215282**

APLP1 (NM_005166) Human Tagged ORF Clone

Product data:

Product Type:	Expression Plasmids
Product Name:	APLP1 (NM_005166) Human Tagged ORF Clone
Tag:	Myc-DDK
Symbol:	APLP1
Synonyms:	APLP
Mammalian Cell Selection:	Neomycin
Vector:	pCMV6-Entry (PS100001)
E. coli Selection:	Kanamycin (25 ug/mL)



[View online »](#)

ORF Nucleotide
Sequence:

>RC215282 representing NM_005166
Red=Cloning site Blue=ORF Green=Tags(s)

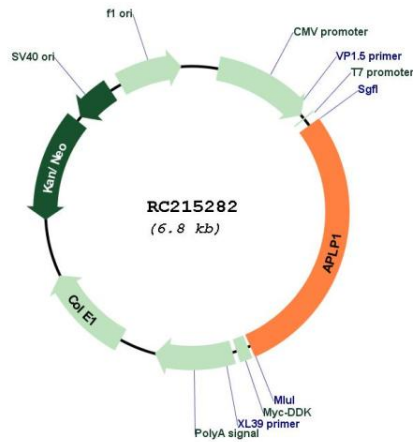
TTTTGTAATACGACTCACTATAGGGCGGCCGGAATTCGTCGACTGGATCCGGTACCGAGGAGATCTGCC
GCCGCGATCGCC

ATGGGGCCCGCCAGCCCCGCTGCTCGCGGTCTAAGTCGCCGCCCGGGCCAGCCGCCGCTGCCGCTGCTGC
TGCCACTATTGCTGCTGCTTCTGCGCGCGCAGCCGCCATCGGGAGCCTGGCCGGTGGGAGCCCCGGCGC
GGCCGAGGCCCGGGTTCGGCCAGGTGGCTGGACTATGCGGGCGCTAACCCCTTACCAGGACCTGCGC
ACCGGCCGCTGGGAACCAGACCCACAGCGCTCTCGACGCTGTCTCCGGGACCCGAGCGCGTGTGGAGT
ACTGCAGACAGATGTACCCGGAGCTGCAGATTGCACGTGTGGAGCAGGCTACGCAGGCCATCCCCATGGA
GCGCTGGTGGGGGTTCCCGGAGCGGCAGCTGCGCCACCCACCAGGTTGTGCCCTTCCGCTGC
CTGCTGGTGAATTTGTGAGTGAGGCCCTGCTGGTGCCTGAAGGCTGCCGTTCTTGACCAGGAGCGCA
TGGACCAATGTGAGAGTCAACCCGGAGGCATCAGGAGGCACAGGAGGCTGCAGCTCCAGGGCCCTCAT
CCTGCACGGCTCGGCATGCTTTACCCTGTGGCTCGGATCGGTTCCGTTGGTGTGGAGTATGTGTGCTGT
CCCCCTCAGGGACCCCGACCCATCTGGGACAGCAGTTGGTGACCCCTCCACCCGGTCTGGCCCCCGG
GGAGCAGAGTAGAGGGGGCTGAGGACGAGGAAGAGGAGGAATCCTTCCCACAGCCAGTAGATGATTACTT
CGTGGAGCCTCCGAGGCTGAAGAGGAAGAGAAACGGTCCCACCCCAAGCTCCCATACACTTGCAGTG
GTCGGCAAAGTCACTCCCACCCCGAGGCCACAGACGGTGTGGATATTTACTTTGGCATGCCTGGGGAAA
TCAGTGAGCAGAGGGGTTCTGAGGGCAAGATGGACCTGGAGGAGCGTAGGATGCGCCAGATTAATGA
GGTGATGCGTGAATGGCCATGGCAGACAACAGTCCAAGAACCTGCCTAAAGCCGACAGACAGGCCCTG
AATGAGCACTTCCAGTCCATTCTGCAGACTCTGGAGGAGCAGGTGTCTGGTGAGCGACAGCGCCTGGTGG
AAACCCACGCGCACCCGCGTCATCGCCCTTATCAACGACCAGCGCCGGGCTGCCTTGAGGGGCTTCCCTGGC
AGCCCTGCAGGCAGATCCGCCTCAGGCGGAGCGTGTCTGTTGGCCCTGCGGCGCTACCTGCGTGGGAG
CAGAAGGAACAGAGGCACACGCTGCGCCACTACCAGCATGTGGCCGCGTGGATCCCAGAAAGGCACAGC
AGATGCGCTTCCAGGTGCATACCCACCTTCAAGTGATTGAGGAGAGGGTGAATCAGAGCCTGGGCCTGCT
TGACCAGAACCCACCTGGCTCAGGAGCTGCGGCCCAAATCCAGGAACTCCTCCACTCTGAACACCTG
GGTCCCAGTGAATTGGAAGCCCTGCCCTGGGGCAGCAGCGAGGACAAGGGTGGGCTGCAGCCTCCAG
ATTCCAAGGATGACACCCCATGACCCTTCCAAAAGGGTCCACAGAACAAGATGCTGCATCCCCTGAGAA
AGAGAAGATGAACCCGCTGGAACAGTATGAGCGAAAGGTGAATGCGTCTGTTCCAAGGGGTTTCCCTTTC
CACTCATCGGAGATTAGAGGGATGAGCTGGCACCAGCTGGGACAGGGGTGCCCGTGGGCTGTGTCGG
GTCTGCTGATCATGGGAGCGGGCGGAGGCTCCCTCATCGTCTCTCCATGCTGCTCCTGCGCAGGAAGAA
GCCCTACGGGGCTATCAGCCATGGCGTGGTGGAGGTGGACCCATGCTGACCCTGGAGGAGCAGCAGCTC
CGGAACTGCAGCGGCACGGCTATGAGAACCCACTTACCCTTCTGGAGGAACGACCC

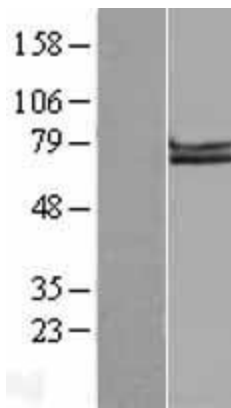
ACGCGTACGCGGCCGCTCGAGCAGAACTCATCTCAGAAGAGGATCTGGCAGCAAATGATATCCTGGATT
ACAAGGATGACGACGATAAGGTTTAA

Reconstitution Method:	<ol style="list-style-type: none">1. Centrifuge at 5,000xg for 5min.2. Carefully open the tube and add 100ul of sterile water to dissolve the DNA.3. Close the tube and incubate for 10 minutes at room temperature.4. Briefly vortex the tube and then do a quick spin (less than 5000xg) to concentrate the liquid at the bottom.5. Store the suspended plasmid at -20°C. The DNA is stable for at least one year from date of shipping when stored at -20°C.
Note:	Plasmids are not sterile. For experiments where strict sterility is required, filtration with 0.22um filter is required.
RefSeq:	NM_005166.4
RefSeq Size:	2447 bp
RefSeq ORF:	1953 bp
Locus ID:	333
UniProt ID:	P51693
Cytogenetics:	19q13.12
Domains:	A4_EXTRA
Protein Families:	Druggable Genome, Transmembrane
MW:	72.18 kDa
Gene Summary:	This gene encodes a member of the highly conserved amyloid precursor protein gene family. The encoded protein is a membrane-associated glycoprotein that is cleaved by secretases in a manner similar to amyloid beta A4 precursor protein cleavage. This cleavage liberates an intracellular cytoplasmic fragment that may act as a transcriptional activator. The encoded protein may also play a role in synaptic maturation during cortical development. Alternatively spliced transcript variants encoding different isoforms have been described. [provided by RefSeq, Jul 2008]

Product images:



Circular map for RC215282



Western blot validation of overexpression lysate (Cat# [LY401581]) using anti-DDK antibody (Cat# [TA50011-100]). Left: Cell lysates from untransfected HEK293T cells; Right: Cell lysates from HEK293T cells transfected with RC215282 using transfection reagent MegaTran 2.0 (Cat# [TT210002]).