

Product datasheet for RC215278

Synaptojanin (SYNJ1) (NM_203446) Human Tagged ORF Clone

Product data:

| | |
|---------------------------|---|
| Product Type: | Expression Plasmids |
| Product Name: | Synaptojanin (SYNJ1) (NM_203446) Human Tagged ORF Clone |
| Tag: | Myc-DDK |
| Symbol: | Synaptojanin |
| Synonyms: | DEE53; EIEE53; INPP5G; PARK20 |
| Mammalian Cell Selection: | Neomycin |
| Vector: | pCMV6-Entry (PS100001) |
| E. coli Selection: | Kanamycin (25 ug/mL) |
| ORF Nucleotide Sequence: | >RC215278 representing NM_203446 Red=Cloning site Blue=ORF Green=Tags(s) |

TTTTGTAATACGACTCACTATAGGGCGGCCGGAATTCGTCGACTGGATCCGGTACCGAGGAGATCTGCC
GCC**CGATCGCC**

ATGGCGTTCAGTAAAGGATTCGGATCTATCACAAATTGGATCCCCACCTTTCAGCCTCATAGTGAAA
CTAGGCATAAGGAAGAATGTCTCATGTTTCGAGTCTGGGGCTGTCGCTGTGCTCTCATCTGCAGAAAAAGA
GGCAATCAAGGGTACATACTCCAAAGTACTGGATGCATATGGACTCTTAGGTGTTCTGCGGTTAAATCTT
GGTGATACTATGTTACATTATCTGGTCTAGTCACTGGATGTATGTCTGTTGGAAAAATCAAGAATCTG
AAGTTTTCCGAGTTACTCCACTGAGTTTATATCACTGCGAATCGATTCTCAGATGAGGATCGCATTTC
AGAAGTGCAGAAAGTTTTGAATTCAGGAACTTTATTTGCATGGTCTGCATCTGGCATCAGTTTAGAT
TTGAGTCTTAATGCGCATCGTAGCATGCAAGAACAGACAAGTATAATAGATTTTTCTGGAAATCAGTCTT
TGCATTTGCATCTCAAACACTATGGCGTGAATTGTGATGACTGGTTATTACGCTCTATGTGTGGAGGAGT
AGAAATCAGAACAATTTATGCTGCTCATAAACAGGCGAAGGCTTGCCTCATTTCAGATTAAGCTGTGAA
CGAGCTGGGACCAGGTTAATGTCCGGGAACAATGATGATGGTCATGTTGCCAATTTGTAGAAAACAG
AACAGGTTGTGACTTAGATGACTCAGTTTCTTCCTTCATACAAATCCGAGGATCTGTTCCATTGTTCTG
GGAGCAACCAGGTTGCAAGTGGATCTCATCGTGTCCGTATGTCAAGGGGATTTGAAGCCAATGCACCT
GCTTTTGACAGGCATTTTGAACACTTAAGAACTTATATGGTAAACAAATATAGTAAATTTGCTTGGAT
CTAAGGAAGGTGAACATATGCTAAGTAAAGCTTCCAGAGTCATTTGAAAGCTTCTGAACATGCTGCTGA
TATCCAGATGGTGAATTTGACTATCATCAAATGGTTAAGGGAGGAAAAGGCAGAAAAATTACATAGTGT
CTTAAACCTCAAGTCCAGAAGTTTCTAGATTATGGATTTTTTATTTCAATGGAAGTGAAGTTCAAAGAT
GCCAGAGTGGTACAGTTCGAACAACTGCTTGGATTGTCTTGATAGAACAATAGTGTGCAGGCATTTCT
TGGCTTAGAGATGCTAGCTAAACAGTTGGAAGCTCTTGGTTTAGCTGAAAAGCCTCAGTTGGTGACTCGC
TTTCAAGAAGTTTTCCGGTCAATGTGGTCCGTGAATGGTATTCAATCAGTAAGATATATGCAGGAAGT
GAGCTCTTGAAGGAAAGCGAAGTTAAAAGATGGTGTCTGCTCTGTTACCCGAACAATTCAGAATAACT
CTTTGACAGCTCAAGCAAGAGGCCATTGATGTTTTGCTACTGGGAAACTCTGAATAGTATTAGCT



[View online >](#)

GACAAAGCTCGAGCACTTTAACTACTGGAAGTTTGCCTGTTTCTGAGCAGACATTACAGTCAGCATCTT
CTAAAGTACTAAAGAGCATGTGTGAGAATTTCTACAAATATTCAAAGCCTAAGAAAATTCGAGTATGTGT
CGGAACCTGGAATGTGAATGGTGGGAAGCAATTCGCAGCATAGCTTTTAAAGATCAGACACTCACTGAC
TGGCTTCTTGATGCACCCAAGTTAGCTGGCATCCAGGAGTTTCAAGATAAAAAGAAGTAAGCCAACCTGATA
TATTTGCAATTTGGTTTGAAGAAATGGTAGAATTGAATGCTGGAAACATTGTGAGTGCAAGCACAACAAA
TCAGAAGCTCTGGGCTGTAGAACTTCAGAAGACAATCTCCAGAGACAACAAGTATGTGCTGCTGGCTTCT
GAACAGTTGGTGGGCGTCTGTTTGTGTTTATCAGACCACAGCATGCTCCTTTTATCAGGGATGTTG
CAGTTGATACTGTGAAGACTGGAATGGGAGGTGCAACTGGAAATAAGGGAGCAGTTGCAATCCGAATGCT
CTTCCATAACAACAGCCTTTGCTTCGTCTGTAGCCACTTTGCTGCAGGGCAGTCAACAAGTCAAAGAAAGA
AATGAAGATTTTATAGAAATAGCACGAAAATTGAGTTTTCTATGGGAAGGATGCTATTTTCCCATGACT
ATGATTTTGGTGTGGTATTTCAACTATCGAATCGATCTCCCTAACGAAGAAGTTAAAGAGCTCATAAG
ACAGCAAAATTTGGGATTCTTTATAGCAGGAGATCAACTATCAATCAGAAAAATGCTGGACAGGTTTTT
AGAGGATTTTTAGAAGGAAAGGTAACCTTTGCTCCGACATATAAGTATGACTTGTGTTTCTGACGACTATG
ACACCAGTGAAAAGTGCCGACCCCTGCCTGGACAGACCGTGTCTTTGGAGAAGGAGGAAATGGCCTTT
TGATAGATCAGCTGAAGATCTAGATCTTCTAAATGCTAGTTTTCAAGATGAAAGCAAAATCTGTACACG
TGGACTCCAGGCACTTTGCTGCACTATGGAAGAGCTGAGCTGAAGACTTCTGACCACAGGCTGTGCTTG
CCCTGATTGATATAGATATATTTGAAGTTGAAGCTGAAGAGAGGCAAAACATTTATAAAGAAAGTAATTGC
AGTTACAGGTCACCAGATGGTACAGTATTGGTCTCAATCAAAAGTTCTTTACCAGAAAATAATTTTTTT
GATGATGCCTTGATTGATGAGCTTCTGCAGCAGTTTGAAGTTTTGGTGAAGTTACTTATAAGATTTG
TAGAAGATAAAATGTGGGTTACATTTTTGGAGGGAAGCTCTGCCTTGAATGTTCTGAGCCTAAATGGTAA
AGAGTTATTGAATCGGACTATACTATTGCTTTAAAAAGTCCAGACTGGATCAAAAATTTGGAAGAAGAA
ATGAGTTTAGAGAAAATTAGCATTGCATTGCCATCAACAAGCTCTACCCTGCTTGGTGAAGATGCAG
AGGTTGCAGCAGATTTGATATGGAAGGTGATGTTGATGACTATAGTGCTGAAGTGAGGAACTTCTTCC
TCAGCATCTCCAGCCATCTTCAAGTTCCGGCCTTGGTACTTCCCCAGCTTTCACCCCGAAGTATGCTCC
TGCCAGTCACTACAATATCAGAGGGTCTGTACCTTCCCTTCCCATCAGACCAAGCCGAGCACCCTCAA
GAACTCTGGGCCTCCCAGTGCACAGAGTTCTCTATTGACGCGCAGCCAGCAACGCCGCTGCCGAGAA
AGACCCCGCCAGCCCTTGGAGCCCAAGCGGCCGCGCCGCCCCGCGCTGCCCTCCCACACGCCCG
GCTCCCCACAGAGACCTCCTCCGCTTCCAGGGGCTAGGAGTCTGCACCCACTAGAAAGGAATTTGGAG
CACCCAAAAGCCCTGGAACAACAAGGAAAGATAATATAGGACGCAGTCAAGCTTCACTCAAGCAGGACT
TGCAGGCCAGGACCTGCTGGATACAGTACAGCCAGCCGACGATTCTCTCTGCTGGAGTTATCAGT
GCCCCACAGAGCCACGCGGGGATCTGCTGGAAGACTGACTCCTGAAAGCCAAAGCAAAACATCAGAAA
CGTCGAAAAGTTCAACTTCTTCTGAACTGAAAGCCTCAGGCTGCTTTTCTCCGAGTCTTCTTT
GCCCCGCTGCTCAAAGGTTGCAAGAGCCTTGTCCCTGTGGCAGCACCTATGCCTCAGTCTGGCCCC
CAGCCAAATTTGGAACCCACCACAACCACCCTCGAAGCAGGTCATCCCATAGCTTGCCTTCAGAAG
CTTCTCACACCCGAACAGGAGCAACCATCAGGG

ACGCGTACGCGGCCGCTCGAGCAGAACTCATCTCAGAAGAGGATCTGGCAGCAATGATATCCTGGATT
ACAAGGATGACGACGATAAGGTTTAA

Protein Sequence: >RC215278 representing NM_203446
 Red=Cloning site Green=Tags(s)

```
MAFSKGFRIYHKLDPPPFSLIVETRHKEECLMFESGAVAVLSSAEKEAIKGTYSKVLDAYGLLGVLRLNL
GDTMLHYLVLTGCMSSVGKIQESEVFRVTSTEFISLRIDSSDEDRISEVRKVLNSGNFYFAWSASGISLD
LSLNAHRSMQEQTNDNRFWNQSLHLHLKHYGVNCDWLLRLMCGGVEIRTIYAAHKQAKACLISRLSCE
RAGTRFNVRGTNDGDGHVANFVETEQQVYLDSDSVSSFIQIRGSVPLFWEQPLQVGSHRVMSRGFEANAP
AFDRHFRTLKNLYGKQIIVNLLGSKEGEHMLSKAFQSHLKASEHAADIQMVNFDYHQMVKGGKAELHSV
LKPQVQKFLDYGFFYFNGSEVQRCQSGTVRTNCLDCLDRTNVQAFGLGLEMLAKQLEALGLAEKPQLVTR
FQEVFRSMWSVNGDSISKIYAGTGALEGKAKLKDARSVRTIQNNFFDSSKQEAIDVLLGNTLNSDLA
DKARALLTTGSLRVSEQTLQSASSKVLKSMCENFYKYSKPKKIRVCVGTWVNVGGKQFRSIAFNQTLTD
WLLDAPKLAGIQEFQDKRSKPTDIFAIGFEEMVELNAGNIVSASTTNQKLWAVELQKTI SRDNKYVLLAS
EQLVGVCLFVFI RPHAFPI RDVAVDVTKTGMGGATGNKGAVAIRMLFHTTSLCFVCSHF AAGQSQVKER
NEDFIEIARKLSFPMGRMLFSDHYVFWCGDFNYRIDLPNEEVKELIRQQNWDSL IAGDQLINQKNAGQVF
RGFLEGGVTFAPTYKYDLFSDDYDTSEKCRTPAWTDRVLWRRRKWPFDRSAEDL DLLNASFQDESKILYT
WTPGTL LHYGRAELKTS DHRPVVALIDIDIFEVEAEERQNIYKEVIAVQGPDPGT VLVSIKSSLPENNF
DDALIDELLQQFASFGEVILIRFVEDKMVWTFLEGSSALNVL SLNGKELLNRTITIALKSPDWIKNLEEE
MSLEKISIALPSSTSSLLGEDAEVAADFMEGDVDDYSAEVEELLPQHLQPSSSSGLTSPSSSPRTSP
CQSPTISEGPVPSLPIRPSRAPSRTPGPPSAQSSPIDAQPATPLPQKDPAPLEPKRPPPPRPVAPTRP
APPQRPPPPSGARSPAPTRKEFGAPKSPGTRKDNIGRSQSPQAGLAGPGPAGYSTARPTIPPRAGVIS
APQSHARASAGRLTPESQSKTSETSKGSTFLPEPLKPQAAFPQSSLPAPAQLQEPLVPVAAMPQSGP
QPNLETPPQPPRSRSSHSLPSEASSPQQEQPSG
```

TRTRPLEQKLI SEEDLAANDILDYKDDDDKV

Chromatograms: https://cdn.origene.com/chromatograms/mk6683_b12.zip

Restriction Sites: SgfI-MluI

Cloning Scheme:

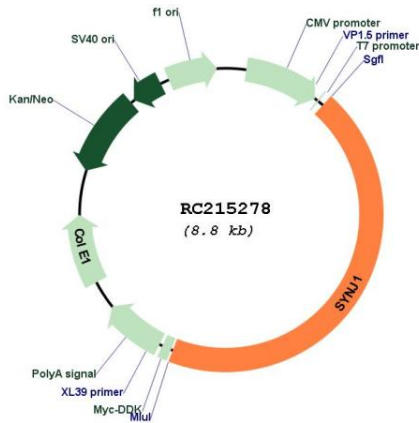


ACCN: NM_203446

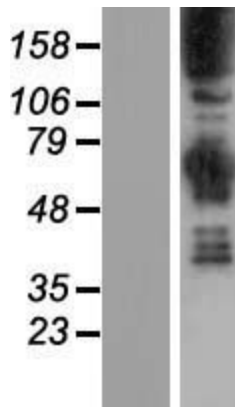
ORF Size: 3885 bp

| | |
|-------------------------------|---|
| OTI Disclaimer: | The molecular sequence of this clone aligns with the gene accession number as a point of reference only. However, individual transcript sequences of the same gene can differ through naturally occurring variations (e.g. polymorphisms), each with its own valid existence. This clone is substantially in agreement with the reference, but a complete review of all prevailing variants is recommended prior to use. More info |
| OTI Annotation: | This clone was engineered to express the complete ORF with an expression tag. Expression varies depending on the nature of the gene. |
| Components: | The ORF clone is ion-exchange column purified and shipped in a 2D barcoded Matrix tube containing 10ug of transfection-ready, dried plasmid DNA (reconstitute with 100 ul of water). |
| Reconstitution Method: | <ol style="list-style-type: none">1. Centrifuge at 5,000xg for 5min.2. Carefully open the tube and add 100ul of sterile water to dissolve the DNA.3. Close the tube and incubate for 10 minutes at room temperature.4. Briefly vortex the tube and then do a quick spin (less than 5000xg) to concentrate the liquid at the bottom.5. Store the suspended plasmid at -20°C. The DNA is stable for at least one year from date of shipping when stored at -20°C. |
| RefSeq: | NM_203446.1 , NP_982271.1 |
| RefSeq Size: | 7039 bp |
| RefSeq ORF: | 3936 bp |
| Locus ID: | 8867 |
| UniProt ID: | O43426 |
| Cytogenetics: | 21q22.11 |
| Protein Families: | Druggable Genome, Phosphatase |
| Protein Pathways: | Inositol phosphate metabolism, Metabolic pathways, Phosphatidylinositol signaling system |
| MW: | 149.1 kDa |
| Gene Summary: | This gene encodes a phosphoinositide phosphatase that regulates levels of membrane phosphatidylinositol-4,5-bisphosphate. As such, expression of this enzyme may affect synaptic transmission and membrane trafficking. Multiple transcript variants encoding different isoforms have been found for this gene. [provided by RefSeq, Sep 2011] |

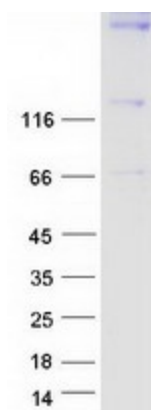
Product images:



Circular map for RC215278



Western blot validation of overexpression lysate (Cat# [LY431693]) using anti-DDK antibody (Cat# [TA50011-100]). Left: Cell lysates from untransfected HEK293T cells; Right: Cell lysates from HEK293T cells transfected with [RC228665] using transfection reagent MegaTran 2.0 (Cat# [TT210002]).



Coomassie blue staining of purified SYNJ1 protein (Cat# [TP315278]). The protein was produced from HEK293T cells transfected with SYNJ1 cDNA clone (Cat# RC215278) using MegaTran 2.0 (Cat# [TT210002]).