

Product datasheet for RC215274

DIAPH2 (NM_006729) Human Tagged ORF Clone

Product data:

Product Type:	Expression Plasmids
Product Name:	DIAPH2 (NM_006729) Human Tagged ORF Clone
Tag:	Myc-DDK
Symbol:	DIAPH2
Synonyms:	DIA; DIA2; DRF2; POF; POF2; POF2A
Mammalian Cell Selection:	Neomycin
Vector:	pCMV6-Entry (PS100001)
E. coli Selection:	Kanamycin (25 ug/mL)
ORF Nucleotide Sequence:	>RC215274 representing NM_006729 Red=Cloning site Blue=ORF Green=Tags(s)

TTTTGTAATACGACTCACTATAGGGCGGCCGGAATTCGTCGACTGGATCCGGTACCGAGGAGATCTGCC
GCC**CGATCGCC**

ATGGAGCAGCCCGGGCGCGCGTCTGGGAGCGGGAGCGCGCAGCGAGGAACCCGGTGGGGCCGGAGCA
ACAAGCGGAGCGCGGGAAACCGGCCGCAATGAAGAGGAAACGAAAAACAAACCAAATGAACATTCA
AATAAAAACTTTGGCAGATGATGTGCGTGACCGAATTACAAGTTTAGAAAACTACTGTCAAAAAAGAA
AAACCTCTTATCAACATCCTATTGATTCTCAAGTCGCGATGAGTGAGTTTCTGCAGCTCAGCCATTAT
ATGATGAACGATCTTTGAATTTGCAGAAAAGGAAGTATTGGATCTCTTTGAAAAATGATGGAGGACAT
GAACCTTAACGAAGAGAAAAAGCTCCTTACGAAACAAAGACTTTACCACCAAACGTGAGATGGTTGTC
CAGTATATTTCTGCCACTGCCAAATCTGGTGGGCTGAAAAACAGCAAACATGAATGCACCCTGTCTTCAC
AAGAATATGTTTACGAATTACGATCGGGTATATCAGATGAGAACTTCTTAATTGCCTAGAATCCCTCAG
GGTTTCTTTAACCAGCAATCCGGTCAGCTGGGTTAACAACCTTTGGCCATGAAGGTCTTGGACTCTTATTG
GATGAGCTGAAAAAGCTTCTGGACAAAAACAGCAAGAAAATATTGACAAGAAGAATCAGTATAAACTTA
TTCAATGCCTCAAAGCATTATGAATAAAGTTTGGATTACAAAGGATTCTAGGAGATGAAAGAAGTCT
TTTACTATTGGCAAGAGCAATTGACCCCAACAACCAACATGATGACTGAAATAGTAAAAATACTTTCT
GCTATTTGCATTGTTGGAGAAGAGAACATTCTAGATAAACTTTTAGGGGCTATAACAACAGCAGCAGAAA
GAAATAACAGGGAACGATTTTACCAATTGTGGAAGGTTTAGAAAATCAGGAAGCCTTGCAATTACAGGT
GGCCTGCATGCAGTTTATAAATGCCCTTGTCACTTCTCCTTATGAGCTTGATTTTGAATACATTTAAGG
AATGAATCTCCGTTCCAGGACTAAAAACAATGTTACCAGATCTAAAAGAAAAAGAGAATGATGAGCTTG
ATATTCAGTTGAAAGTATTTGATGAAAAACAAGAGATGACCTAACTGAATTATCACACCGTCTCAATGA
CATTGAGCAGAAATGGATGATATGAATGAAGTCTACCATCTTCTATATAATATGCTGAAGGACTGCT
GCTGAAAATTACTTCTTATCTATTCTACAACATTTTTTGGCTTACAGAAATGATTATTATATCAGGCCAC
AATATTATAAAAAAATTGAGGAATGTGTTTACAGATAGTGCTACACTGCAGTGGTATGGATCCAGACTT
CAAATACAGGCAAGATTAGACATCGATTTAACTCATCTGATAGATTCTTGTGTGAACAAGCGAAAGTT



[View online >](#)

GAAGAAAGTGAACAAAAAGCTGCAGAGTTTTCAAAGAAGTTCGATGAAGAATTCACAGCTCGACAGGAAG
 CTCAAGCAGAGCTTCAAAAAAGAGATGAGAAAAATCAAAGAAGTTCGAGCAGAAATCCAGCAACTTCGAAC
 CCAGGCACAAGTACTCTCAAGTTCATCAGGAATTCAGGTCTCTGCAGCACCTCCATTGCCAGGTGTA
 GGGCCGCTCCACCACCACCCGCGCCACCTCTACCCGAGGAGCTCTCTTCTCTCCACCACCTCCTT
 TACCTGGAATGATGGGGATACCACCACCACCCACCACCTTTATTTGGGGGACCTCCTCCACCACC
 ACCCCTTGAGGAGTTCCTCTCCCCAGGAATACACTTAATCTACCTTATGGAATGAAGCAGAAAAA
 ATGTATAAACCTGAAGTGTCCATGAAGAGAATCAATTGGTCAAAGATTGAACCCACAGAATTACTGAGA
 ACTGTTTCTGGTTAAGAGTCAAAGAAGCAAGTTTGAGAATCCAGATCTCTTTGCCAAATTGGCATTGAA
 TTTTGCTACTCAGATAAAAAGTTCAAAAGAAGCAGAAAGCATTAGAAGAAAAGAAGACTGGGCCTACAAAG
 AAGAAAGTGAAGAAGTGAATTTTGGATCCCAAAACAGCTCAGAATCTGTCCATCTTTCTGGGATCAT
 ATCGCATGCCATATGAAGACATAAAGAACGTTATTCTGGAGGTTAATGAAGACATGCTGAGTGAGGCTTT
 AATTGAGAACCTTGTGAAACATCTTCTGAGCAGAAGATACTCAACGAATTAGCAGAGCTTAAGAATGAA
 TATGATGACCTCTGTGAGCCTGAACAATTTGGAGTTGTGATGAGCTCTGTGAAAAATTACAGCCTCGTC
 TCAGTAGTATCCTGTTCAAGCTCACATTTGAAGAACACATAAACAACATCAAACCAAGCATCATAGCAGT
 AACTCTTGCTGTGAAGAAGTGAAGAAAAGTGAAGCTTTAACAGACTTTTAGAGTTAGTCTTCTTGT
 GAAACTACATGAACTCAGGCTCAAGAAATGCCAGTCTTTGGGATTTAAGATCAACTTCCTTTGTAAAG
 TCAGAGATACTAAATCAGCGGATCAAAAAACAACCTTTTGCATTTTATTGCCGACATTTGTGAGAAAA
 ATATCGAGATATCCTAAAATTTCTGAAGAAGTGAACACGTAGAAAAGTGAAGCAAGCAAGTTTCAGCTCAA
 ATTCTCAAGAGCAACCTTGCATCAATGGAACAACAAATTTGTTTCTGGAACGTGACATCAAGAAATTC
 CCCAAGCAGAAAAATCAACACGATAAGTTTGTGGAAAAGATGACCAGCTTTACAAAGACTGCCCGAGAACA
 GTATGAAAACTCTCCACCATGCACAACAACATGATGAAGCTCTATGAGAATCTTGAGAATACTTCATT
 TTTGACTCAAAGACAGTGAAGTGAAGAGTTCCTTTGGTATCTCAACAACCTCCGAACTTTGTTTTGG
 AAGCAGTGAGAGAAAAAATAAGAGAAGAGAAAATGGAAGAGAAGACCAGGAGGGCAAAACTTGCAAAAAGA
 GAAAGCTGAACAAGAAAAGTTAGAAGCCAGAAGAAAAGAAAACAACCTCATTGATATAAACAAAGAGGGT
 GATGAGACTGGTGTGATGGATACTTCTAGAAGCCCTACAATCAGGTGCAGCATTTCAGAGACCCTCGAA
 AGCGGATTCGAAGGAATCCAGATAACAGACGAGTACCTTTGAAAAGTGCAGCTCTCGCCACAATGGAGC
 TATCTCATCTAAG

ACGCGTACGCGGCGCTCGAGCAGAAACTCATCTCAGAAGAGGATCTGGCAGCAATGATATCCTGGATT
 ACAAGGATGACGACGATAAGGTTTAA

Protein Sequence:

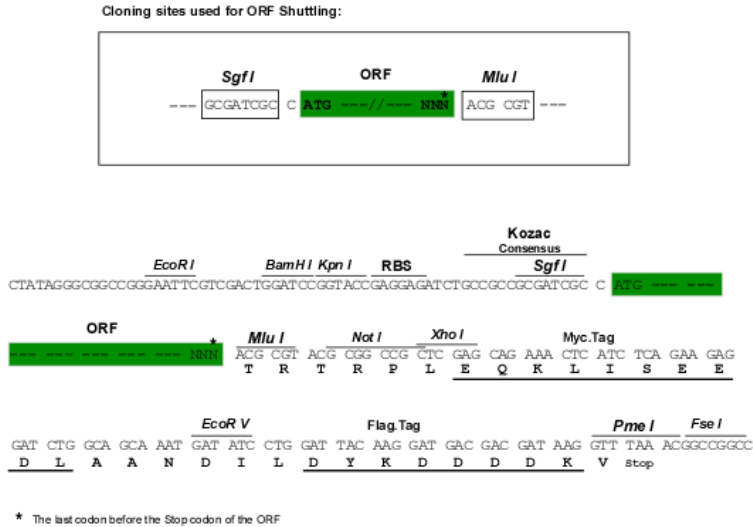
>RC215274 representing NM_006729
 Red=Cloning site Green=Tags(s)

MEQPGAAASGAGGGSEEPGGGRSNKRSAGNRAANEEETKNKPKLNIQIKTLADDVRDRITSFRKSTVKKE
 KPLIQHPIDSQVAMSEFPAAQPLYDERSLNLSEKEVLDLFEKMMEDMNLNEEKKAPLRNKDFTTKREMVV
 QYISATAKSGGLKNSKHECTLSSQEYVHELRSGISDEKLLNLCLESLRVSLTSNPVSWVNNFGHEGLGLLL
 DELEKLLDKKQQENIDKKNQYKLIQCLKAFMNNKFLQRLGDERSLLLLARAIDPKQPNMTEIVKILS
 AICIVGEENILDKLLGAIITTAERNRERFSPIVEGLENQEALQLQVACMQFINALVTSPEYELDFRIHLR
 NEFLRSLKTMPLDLKEKENDELDIQLKVFDENKEDDLTELSHRLNDIRAEMDMNEVYHLLYNMLKDTA
 AENYFLSILQHFLLIRNDYYIRPQYKIIIEECVSQIVLHCSGMDPDFKYRQLDIDLTHLIDSCVNKAKV
 EESEQKAAEFSKFDEEFTARQEAQAEQKRDEKIKELEAEIQQLRTQAQVLSSSSGIPGPPAAPPLPGV
 GPPPPPPAPPLPGGAPLPPPPPLPGMMGIPPPPPPLFGGPPPPPLGGVPPPPGISLNLPGYMKQKK
 MYKPEVSMKRINWSKIEPTELSENCFWLRVKEDKFENPDLFAKLALNFATQIKVQKNAEALKEKKTGPTK
 KVKELRILDPKTAQNL SIFLGSYRMPYEDIRNVILEVNEMLSEALIQNLVKHLPEQKILNELAELKNE
 YDDLCEPEQFGVVMSSVKMLQPRLSSILFKLTFEEHINNIPSI IAVTLACEELKKSSEFNRLLELVLLV
 GNYMNSGSRNAQSLGFKINFLCKIRDTSADQKTTLLHF IADICEEKYRDILKFPPELEHVESASKVSAQ
 ILKSNLASMEQQIVHLERDIKKFPQAEHQDKFVEKMTSFTKTAREQYEKLSMTHNMMKLYENLGEYFI
 FDSKTVSIEEFFGDLNFRITLFLAVRENNKRREMEKTRRAKLAKEKAEQEKLERQKKKQLIDINKEG
 DETGVMDNLEALQSGAAFRDRRKRIPRNPDRRVPLEERSRSHNGAISSK

TRTRPLEQKLISEEDLAANDILDYKDDDDKV

Restriction Sites: SgfI-MluI

Cloning Scheme:



ACCN: NM_006729

ORF Size: 3303 bp

OTI Disclaimer: The molecular sequence of this clone aligns with the gene accession number as a point of reference only. However, individual transcript sequences of the same gene can differ through naturally occurring variations (e.g. polymorphisms), each with its own valid existence. This clone is substantially in agreement with the reference, but a complete review of all prevailing variants is recommended prior to use. [More info](#)

OTI Annotation: This clone was engineered to express the complete ORF with an expression tag. Expression varies depending on the nature of the gene.

Components: The ORF clone is ion-exchange column purified and shipped in a 2D barcoded Matrix tube containing 10ug of transfection-ready, dried plasmid DNA (reconstitute with 100 ul of water).

Reconstitution Method:

1. Centrifuge at 5,000xg for 5min.
2. Carefully open the tube and add 100ul of sterile water to dissolve the DNA.
3. Close the tube and incubate for 10 minutes at room temperature.
4. Briefly vortex the tube and then do a quick spin (less than 5000xg) to concentrate the liquid at the bottom.
5. Store the suspended plasmid at -20°C. The DNA is stable for at least one year from date of shipping when stored at -20°C.

RefSeq: [NM_006729.5](#)

RefSeq Size: 9344 bp

RefSeq ORF: 3306 bp

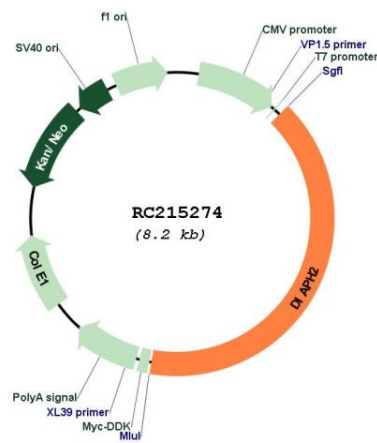
Locus ID: 1730

UniProt ID: [O60879](#)

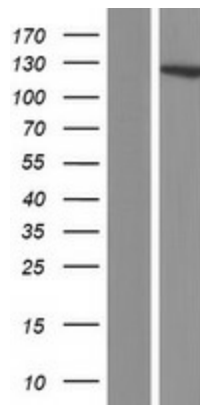
Cytogenetics: Xq21.33
Domains: FH2
Protein Families: Druggable Genome
Protein Pathways: Regulation of actin cytoskeleton
MW: 125.4 kDa

Gene Summary: The product of this gene belongs to the diaphanous subfamily of the formin homology family of proteins. This gene may play a role in the development and normal function of the ovaries. Defects in this gene have been linked to premature ovarian failure 2. Alternatively spliced transcript variants encoding different isoforms have been identified. [provided by RefSeq, Jul 2008]

Product images:



Circular map for RC215274



Western blot validation of overexpression lysate (Cat# [LY416466]) using anti-DDK antibody (Cat# [TA50011-100]). Left: Cell lysates from untransfected HEK293T cells; Right: Cell lysates from HEK293T cells transfected with RC215274 using transfection reagent MegaTran 2.0 (Cat# [TT210002]).