

Product datasheet for RC215270

ATP13A2 (NM_022089) Human Tagged ORF Clone

Product data:

Product Type:	Expression Plasmids
Product Name:	ATP13A2 (NM_022089) Human Tagged ORF Clone
Tag:	Myc-DDK
Symbol:	ATP13A2
Synonyms:	CLN12; HSA9947; KRPPD; PARK9; SPG78
Mammalian Cell Selection:	Neomycin
Vector:	pCMV6-Entry (PS100001)
E. coli Selection:	Kanamycin (25 ug/mL)
ORF Nucleotide Sequence:	>RC215270 representing NM_022089 Red=Cloning site Blue=ORF Green=Tags(s)

TTTTGTAATACGACTCACTATAGGGCGGCCGGAATTCGTCGACTGGATCCGGTACCGAGGAGATCTGCCGCCGCGATCGCC

ATGAGCGCAGACAGCAGCCCTCTCGTGGGCAGCACGCCACCGTTATGGGACCTGACGATAGGGACAT
CAATAGATCCCCTCAGCTCCTCAGTTTCATCCGTGAGGCTCAGCGGCTACTGTGGCAGTCCATGGAGGGT
CATCGGCTATCACGTCGTGGTCTGGATGATGGCTGGGATCCCTTTGCTGCTTCCGTTGGAAGCCCTG
TGGGGGTGCGGCTCGGCTCCGCCCTGCAACCTGGCCACGCCGAAACTCGTTATCGAAATAAGAG
ACAAAGAGGATAGTTCTGGCAGCTCTTACTGTCCAGGTGCAGACTGAGGCCATCGGCGAGGGCAGCCT
GGAGCCGTCCCCACAGTCCCAGGCAGAGGATGGCCGGAGCCAGGCGGCAGTTGGGGCGGTACCAGAGGGT
GCCTGGAAGGATACGGCCAGCTCCACAAGAGCGAGGAGGCGGTGAGTGTGCGACAGAAGCGGGTGTCTG
GGTATTACCTCTTCCAGGGCCAGCGCTATATCTGGATCGAGACCCAGCAAGCCTTCTACCAGGTCAGCCT
CCTGGACCATGGCCGCTCTTGTGACGACGTCCACCGCTCCCGCATGGCCTCAGCCTCCAGGACCAATG
GTGAGGAAGGCCATTTACGGCCCAACGTGATCAGCATACCGGTCAAGTCTACCCAGCTGCTGGTGG
ACGAGGCACTGAACCCCTACTATGGGTTCCAGGCTTCCAGCATCGCGCTGGCTGGCTGACCACTACTA
CTGGTACGCCCTGTGCATCTTCTCATTTCCTCCATCTCCATCGCTGTGCGTGTACAAGACCAGAAAG
CAAAGCCAGACTCTAAGGACATGGTCAAGTTGTCCATGCGGGTGTGCGTGTGCGCCAGGGGGAGAGG
AAGAGTGGGTGGACTCCAGTGAAGTGTGAGTGTGAGTGTGAGTGTGAGTGTGAGTGTGAGTGTGAGTGTGAGT
GCCCTGTGATGCCGCCCTGGTGGCCGGCAGTGCATGGTGAATGAGAGCTCTCTGACAGGAGAGAGCATT
CCAGTGTGAAGACGGCACTGCCGGAGGGGCTGGGGCCCTACTGTGACAGACACACCCGGCGGCACACAC
TCTTCTGCGGGACCCTCATCTTGCAGGCCCGGGCTATGTGGACCGCACGTCTGGCAGTGGTACCCG
CACAGGGTTCTGCACGGCAAAAGGGGCTGGTGAAGTCCATCTTGCACCCCGGCCATCAACTCAAG
TTCTATAAACACAGCATGAAGTTTGTGGTGCCTCTCTGCTGCTGCTCTCTCGGCACCATCTACAGCA
TCTTCATCTCTACCGAAACCGGTGCCTCTGAATGAGATTGTAATCCGGGCTCTCGACCTGGTACCGT
GGTGGTGCACCTGCCCTGCCTGCTGCCATGACTGTGTGCAGCTCTACGCCAGAGCCGACTGCGGAGA



[View online »](#)

CAGGGCATTCTGCATCCACCCACTGCGCATCAACCTGGGGGGCAAGCTGCAGCTGGTGTGTTTCGACA
AGACGGGCACCCTCACTGAGGACGGCTTAGACGTGATGGGGTGGTGCCCTGAAGGGCAGGCATTCT
GCCCTGGTCCCAGAGCCTCGCCGCTGCCTGTGGGGCCCTGCTCCGAGCACTGGCCACCTGCCATGCC
CTCAGCCGGCTCCAGGACACCCCGTGGGGACCCCATGGACTTGAAGATGGTGGAGTCTACTGGCTGG
TCCTGGAGGAAGAGCCGGCTGCAGACTCAGCATTTGGGACCCAGGTCTTGGCAGTGATGAGACCCCACT
TTGGGAGCCCCAGCTGCAGGCAATGGAGGAGCCCCGGTGCCAGTCAGCGTCTCCACCCTTCCCCTTC
TCTTCGGCTCTGCAGCGCATGAGTGTGGTGGTGGCGTGGCCAGGGGCCACTCAGCCGAGGCCTACGTCA
AAGGCTCCCCGGAGCTGGTGGCAGGGCTCTGCAACCCGAGACAGTGCCACCGACTTCGCCAGATGCT
GCAGAGCTATACAGCTGCTGGCTACCGTGTCTGGCCCTGGCCAGCAAGCCACTGCCACTGTGCCAGC
CTGGAGGCAGCCAGCAACTGACGAGGGACACTGTGGAAGGAGACCTGAGCCTCTGGGGCTGTGGTCA
TGAGGAACCTACTGAAGCCGAGACAACGCCAGTTATCCAGGCTCTGCAAGGACCCGCATCCGCGCCGT
CATGGTACAGGGGACAACCTGCAGACAGCGGTGACTGTGGCCCGGGGCTGTGGCATGGTGGCCCCCAG
GAGCATCTGATCATCGTCCACGCCACCCACCTGAGCGGGGTGAGCTGCCTCTCTCGATTCTGCCGA
TGGAGTCCCCACAGCCGTGAATGGCGTAAAGGATCTGACCAGGCTGCAAGCTACACCGTGGAGCCAGA
CCCCCGATCCAGGCACCTGGCCCTCAGCGGGCCACCTTTGGTATCATTGTGAAGCACTTCCCCAAGCTG
CTGCCAAGGTCCTGGTCCAGGGCACTGCTTTGCCCGCATGGCCCTGAGCAGAAGACAGAGCTGGTGT
GCGAGCTACAGAAGCTTCACTACTGCGTGGCATGTGCGGAGACGGCGCAATGACTGTGGGGCCCTGAA
GGCGGCTGATGTCGGCATCTCGCTGTCCAGGCAGAAAGCCTCAGTGGTCTCACCTTACCTCGAGCATG
GCCAGTATTGAGTGCCTGCCATGGTCAACAGGGAGGGGCGCTGTTCCCTTGACACTTCCGTTACGCGTCT
TCAAGTACATGGCTCTGTACAGCCTGACCCAGTTCATCTCCGCTCTGATCCTCTACACGATCAACACCA
CCTGGGTGACCTGCAGTTCCTGGCCATCGACCTGGTCAACACCACAGTGGCAGTGCTCATGAGCCGC
ACGGGGCCAGCGCTGGTCTGGGACGGGTGCGGCCACCGGGGGCGCTGCTCAGCGTGCCCGTGTGCTCAGCA
GCCTGCTGCTGCAGATGGTCTGGTACCAGCGTGCAGCTAGGGGGCTACTTCTGACCCCTGGCCAGCC
ATGTTTCTGCTGCTGAAACAGGACAGTGGCCGCACCAGACAACCTGCCAACTACGAGAACACCGTGGTC
TTCTCTGTCCAGCTTCCAGTACCTCATCTGGCTGCAGCCGTGTCAGGGGGCGCCCTTCCGCGGC
CGCTCTACACCAATGTGCCCTTCTGGTGGCCCTGGCGCTCCTGAGCTCCGTCTGGTGGGCTTGTCT
GGTCCCCGGCCTCCTGCAGGGGCGCTGGCGCTGAGGAACATCACTGACACCGGCTTCAAGCTGCTGCTG
CTGGGTCTGGTCAACCTCAACTTCGTGGGGCCTTCAAGCTGGAGAGCGTGTAGACCAGTGCCTCCCCG
CCTGCCTGCGCCGCTCCGGCCAAAGCGGGCCTCAAGAAGCGCTTCAAGCAGCTGGAACGAGAGCTGGC
CGAGCAGCCCTGGCCGCGCTGCCCGCCGCCCTGAGG

ACGCGTACGCGGCGCTCGAGCAGAACTCATCTCAGAAGAGGATCTGGCAGCAAATGATATCCTGGATT
ACAAGGATGACGACGATAAGGTTTAA

Protein Sequence: >RC215270 representing NM_022089
Red=Cloning site Green=Tags(s)

```
MSADSSPLVGSTPTGYGTLTIGTIDPLSSSVSSVRLSGYCGSPWRVIGYHVVVMMAGIPLLLFRWKPL
WGVRLRLRPCNLAHAETLVIEIRDKEDSSWQLFTVQVQTEAIGEGSLEPSQSQAEGRSQAAVAVPEG
AWKDATALHKSEEAVSVGQKRVLRYYLFQGRYIWIETQQAFYQVSLLDHGRSCDDVHRSRHLGLSLQDQM
VRKAIYGNVISIPVKSYPQLLVDEALNPYYGFQAFSIALWLADHYHYWYALCIFLISSISICLSLYKTRK
QSQTLRDMVKLSMRVCVCRPGGEEWVDSSELVPGDCLVLPQEGGLMPCDAALVAGECMVNESSLTGESI
PVLKTALPEGLGPYCAETHRRHTLFCGTLILQARAYVGPVHLAVVTRTGFTAKGGLVSSILHPRPINFK
FYKHSMKFVAALSVLALLGTIYSIFILYRNRVPLNEIVIRALDLVTVVPPALPAAMTVCTLYAQSRLRR
QGIFCIHPLRINLGGKLQVCFDKGTGLTEDGLDVMGVVPLKQGAFLPLVPEPRRLPVGPLLALATCHA
LSRLQDTPVGDPMCLKMVESTGWVLEEPAADSAFGTQVLAVMRPPLWEPQLQAMEEPPVPSVLHRFPF
SSALQRMSVVVAWPGATQPEAYVKGSPELVAGLCNPETVPTDF AQMLQSYTAAGYRVVALASKPLPTVPS
LEAAQQLTRDTVEGDL SLLGLLVMRNLKPKQTPVIQALRRTRIRAVMVTGDNLQTAVTVARGCGMVAPO
EHLIIIVHATHPERGQPASLEFLPMESPTAVNGVKDPDQAASYTVEPDRSRHLALSGPTFGIIVKHFPKL
LPKVLVQGTVFARMAPEQKTELVCLEQLQYCVGMC GDGANDCGALKAADVGISLSQAEASVSPFTSSM
ASIECVPMVIREGRCLDTSFSVFKYMALYSLTQFISVLILYTINTNLGDLQFLAIDLVIITTVAVLMSR
TGPALVLRVPRPGALLSVPVLSLLLQMLVLTGVQLGGYFLTLAQPWFVPLNRTVAAPDNLPNYENTVV
FSLSSFQYLILAAAVSKGAPFRRPLYTNPFLVALALLSSVLVGLVLPVGLLQGPLALRNITDTGFKLLL
LGLVTLNFVGFMLESVLDQCLPACLRRLRPKRASKKRFKQLERELAEQPWPPLPAGPLR
```

TRTRPLEQKLISEEDLAANDILDYKDDDDKV

Chromatograms: https://cdn.origene.com/chromatograms/mk8010_f12.zip

Restriction Sites: SgfI-MluI

Cloning Scheme:

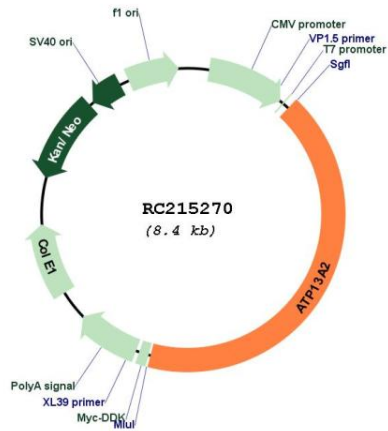


ACCN: NM_022089

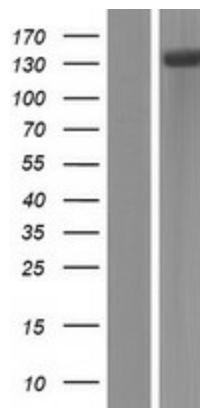
ORF Size: 3540 bp

OTI Disclaimer:	The molecular sequence of this clone aligns with the gene accession number as a point of reference only. However, individual transcript sequences of the same gene can differ through naturally occurring variations (e.g. polymorphisms), each with its own valid existence. This clone is substantially in agreement with the reference, but a complete review of all prevailing variants is recommended prior to use. More info
OTI Annotation:	This clone was engineered to express the complete ORF with an expression tag. Expression varies depending on the nature of the gene.
Components:	The ORF clone is ion-exchange column purified and shipped in a 2D barcoded Matrix tube containing 10ug of transfection-ready, dried plasmid DNA (reconstitute with 100 ul of water).
Reconstitution Method:	<ol style="list-style-type: none">1. Centrifuge at 5,000xg for 5min.2. Carefully open the tube and add 100ul of sterile water to dissolve the DNA.3. Close the tube and incubate for 10 minutes at room temperature.4. Briefly vortex the tube and then do a quick spin (less than 5000xg) to concentrate the liquid at the bottom.5. Store the suspended plasmid at -20°C. The DNA is stable for at least one year from date of shipping when stored at -20°C.
RefSeq:	NM_022089.4
RefSeq Size:	3840 bp
RefSeq ORF:	3543 bp
Locus ID:	23400
UniProt ID:	Q9NQ11
Cytogenetics:	1p36.13
Domains:	E1-E2_ATPase, Hydrolase
Protein Families:	Transmembrane
MW:	128.6 kDa
Gene Summary:	This gene encodes a member of the P5 subfamily of ATPases which transports inorganic cations as well as other substrates. Mutations in this gene are associated with Kufor-Rakeb syndrome (KRS), also referred to as Parkinson disease 9. Multiple transcript variants encoding different isoforms have been found for this gene.[provided by RefSeq, Nov 2008]

Product images:



Circular map for RC215270



Western blot validation of overexpression lysate (Cat# [LY411771]) using anti-DDK antibody (Cat# [TA50011-100]). Left: Cell lysates from untransfected HEK293T cells; Right: Cell lysates from HEK293T cells transfected with RC215270 using transfection reagent MegaTran 2.0 (Cat# [TT210002]).