

## Product datasheet for **RC215268**

### ARFGAP1 (NM\_018209) Human Tagged ORF Clone

#### Product data:

Product Type:	Expression Plasmids
Product Name:	ARFGAP1 (NM_018209) Human Tagged ORF Clone
Tag:	Myc-DDK
Symbol:	ARFGAP1
Synonyms:	ARF1GAP; HRIHFB2281
Mammalian Cell Selection:	Neomycin
Vector:	pCMV6-Entry (PS100001)
E. coli Selection:	Kanamycin (25 ug/mL)
ORF Nucleotide Sequence:	>RC215268 representing NM_018209 Red=Cloning site Blue=ORF Green=Tags(s)

TTTTGTAATACGACTCACTATAGGGCGGCCGGAATTCGTCGACTGGATCCGGTACCGAGGAGATCTGCC  
GCC**CGATCGCC**

ATGGCCAGCCCAAGAACCAGGAAGGTTCTTAAAGAAGTCAGGGTGCAGGATGAGAACAACGTTTGTTTT  
AGTGTGGCGGTTCAATCCTCAGTGGGTGACCTACGGCATCTGGATCTGCCTGGAGTGTCTCGG  
GAGACACCGCGGCTTGGGTTACCTCAGCTTGTGCGCTCTGTTACTATGGACAAGTGAAGGACATT  
GAGCTTGAGAAGATGAAAGCTGGTGGGAATGCTAAGTCCGAGAGTTCCTGGAGTCTCAGGAGGATTACG  
ATCCTTGTGGTCTTGCAGGAGAAGTACAACAGCAGAGCCGCGCCCTTTAGGGATAAGGTGGTCGC  
TCTGGCCGAAGGCAGAGAGTGGTCTCTGGAGTCATCACCTGCCAGAACTGGACCCACCTCAGCCAGG  
ACGCTGCCGTCCATGGTGCACCGAGTCTCTGGCCAGCCGAGAGTGTGACCGCCTCTCGGACAAGGCTT  
TTGAAGACTGGCTGAATGATGACCTCGGCTCCTATCAAGGGGCCAGGGGAATCGCTACGTGGGTTTGG  
GAACACGCCACCGCCTCAGAAGAAAGAAGTACTTCTCAACAACGCCATGTCTCCCTGTACTCGGGC  
TGGAGCAGCTTCACTGGAGCCAGCCGGTTGCCTCGGCAGCCAAGGAGGGCGCTACAAAATTTGGAT  
CCCAAGCGAGTCAGAAGGCGTCCGAGCTGGGCCACAGCCTGAACGAGAACGTCTCAAGCCTGCGCAGGA  
GAAGGTGAAGGAGGAAAGATTTTTGATGATGTCTCCAGTGGGGTCTCTCAGTTGGCGTCCAAGTCCAG  
GGAGTCGGTAGTAAGGGATGGCGGACGTCACCACCTTTTTTTCGGGAAAGCAGAGGGCCCTTTGGACA  
GCCCTCGGAGGGCCACAGTTATCAGAACAGCGGTCTGGACCACTTCCAAAACAGCAACATAGACCAGAG  
CTTCTGGGAGACCTTTGGAAGTGTGAGCCACCAAGACCGCAAGTCCCGAGCAGCGACAGCTGGACG  
TGCGCGGACACCTCCACCGAGAGGAGGAGCTCGGACAGCTGGGAGGTGTGGGGCTCGGCCTCCACCAACA  
GGAACAGCAACAGCGACGGCGGGAGGGCGGGAGGGCACCAAGAAGGCAGTGCCGCCGGCGTGCCAC  
TGATGATGGCTGGGACAACCAACTGG

**ACGGT**ACGCGGCCGCTCGAGCAGAACTCATCTCAGAAGAGGATCTGGCAGCAATGATATCCTGGATT  
ACAAGGATGACGACGATAAGGTTTAA



[View online >](#)

**Protein Sequence:** >RC215268 representing NM\_018209  
Red=Cloning site Green=Tags(s)

MASPRTRKVLKEVRVQDENNVCFECGAFNPQWVSVTYGIWICLECSGRHRGLGVHLSFVRSVTMDKWKDI  
 ELEKMKAGGNAKFREFLESQEDYDPCWSLQEKYNSRAALFRDKVVALAEGREWSLESSPAQNWTPPQPR  
 TLPMSVHRVSGQPQSVTASSDKAFEDWLNDDLGSYQGAQGNRYVGFNTPPPQKKEDDFLNNAMSSLYSG  
 WSSFTTGASRFASAAKEGATKFGSQASQKASELGHSLNENVLKPAAQEKVKEGKIFDDVSSGVSQLASKVQ  
 GVGSKGWRDVTTFSGKAEGLDSPSEGHYQNSGLDHFQNSNIDQSFWETFGSAEPTKTRKSPSSDSWT  
 CADTSTERRSSDSWEVWGSASTNRNSNSDGGEGGEGTKKAVPPAVPTDDGWDNQNW

TRTRPLEQKLISEEDLAANDILDYKDDDDKV

**Chromatograms:** [https://cdn.origene.com/chromatograms/mk6478\\_g01.zip](https://cdn.origene.com/chromatograms/mk6478_g01.zip)

**Restriction Sites:** SgfI-MluI

**Cloning Scheme:**



\* The last codon before the Stop codon of the ORF

**ACCN:** NM\_018209

**ORF Size:** 1218 bp

**OTI Disclaimer:** The molecular sequence of this clone aligns with the gene accession number as a point of reference only. However, individual transcript sequences of the same gene can differ through naturally occurring variations (e.g. polymorphisms), each with its own valid existence. This clone is substantially in agreement with the reference, but a complete review of all prevailing variants is recommended prior to use. [More info](#)

**OTI Annotation:** This clone was engineered to express the complete ORF with an expression tag. Expression varies depending on the nature of the gene.

**Components:** The ORF clone is ion-exchange column purified and shipped in a 2D barcoded Matrix tube containing 10ug of transfection-ready, dried plasmid DNA (reconstitute with 100 ul of water).

**Reconstitution Method:**

1. Centrifuge at 5,000xg for 5min.
2. Carefully open the tube and add 100ul of sterile water to dissolve the DNA.
3. Close the tube and incubate for 10 minutes at room temperature.
4. Briefly vortex the tube and then do a quick spin (less than 5000xg) to concentrate the liquid at the bottom.
5. Store the suspended plasmid at -20°C. The DNA is stable for at least one year from date of shipping when stored at -20°C.

**RefSeq:** [NM\\_018209.4](#)

**RefSeq Size:** 3250 bp

**RefSeq ORF:** 1221 bp

**Locus ID:** 55738

**UniProt ID:** [Q8N6T3](#)

**Cytogenetics:** 20q13.33

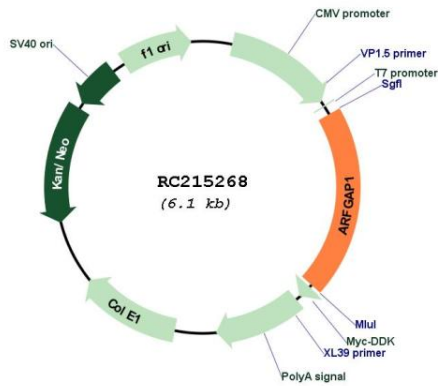
**Domains:** ArfGap

**Protein Pathways:** Endocytosis

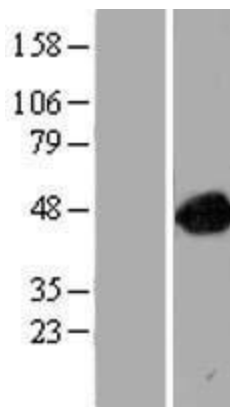
**MW:** 44.5 kDa

**Gene Summary:** The protein encoded by this gene is a GTPase-activating protein, which associates with the Golgi apparatus and which interacts with ADP-ribosylation factor 1. The encoded protein promotes hydrolysis of ADP-ribosylation factor 1-bound GTP and is required for the dissociation of coat proteins from Golgi-derived membranes and vesicles. Dissociation of the coat proteins is required for the fusion of these vesicles with target compartments. The activity of this protein is stimulated by phosphoinositides and inhibited by phosphatidylcholine. Alternative splicing results in multiple transcript variants. [provided by RefSeq, Jul 2013]

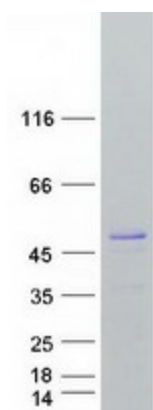
Product images:



Circular map for RC215268



Western blot validation of overexpression lysate (Cat# [LY413218]) using anti-DDK antibody (Cat# [TA50011-100]). Left: Cell lysates from untransfected HEK293T cells; Right: Cell lysates from HEK293T cells transfected with RC215268 using transfection reagent MegaTran 2.0 (Cat# [TT210002]).



Coomassie blue staining of purified ARFGAP1 protein (Cat# [TP315268]). The protein was produced from HEK293T cells transfected with ARFGAP1 cDNA clone (Cat# RC215268) using MegaTran 2.0 (Cat# [TT210002]).