

## Product datasheet for RC215265

### ODF1 (NM\_024410) Human Tagged ORF Clone

#### Product data:

Product Type:	Expression Plasmids
Product Name:	ODF1 (NM_024410) Human Tagged ORF Clone
Tag:	Myc-DDK
Symbol:	ODF1
Synonyms:	CT133; HSPB10; ODF; ODF2; ODF27; ODFP; ODFPG; ODFPGA; ODFPGB; RT7; SODF
Mammalian Cell Selection:	Neomycin
Vector:	pCMV6-Entry (PS100001)
E. coli Selection:	Kanamycin (25 ug/mL)
ORF Nucleotide Sequence:	>RC215265 ORF sequence Red=Cloning site Blue=ORF Green=Tags(s)

TTTTGTAATACGACTCACTATAGGGCGCCGGAATTCGTCGACTGGATCCGGTACCGAGGAGATCTGCC  
GCC**CGATCGCC**

ATGGCTGCACTGAGTTGTCTCTTGGACAGTGTCAGAAGGGACATAAAGAAGGTGGACAGAGAACTAAGGC  
AACTGAGATGCATCGACGAATTTAGCACACGGTGCCTGTGCGACTTGTATATGCACCCCTATTGCTGCTG  
TGACTTGCACCCATATCCGTACTGCTTGTGCTATTCCAAGCGATCAGCTCTTGCGGCCTGTGTGATCTC  
TACCCATGTTGCCTGTGTGATTATAAGCTTTACTGTCTGCGACCATCTCTCAGAAGTTTGGAGAGGAAAG  
CCATCAGAGCCATAGAAGATGAGAAGCGAGAGCTTGCCAACTGAGAAGAACAACAATAGAATTCTGGC  
TTCTCTCTGCTGTAGCAGTAACATTTTAGGATCGGTGAATGTATGCGGTTTTGAACCCGATCAAGTCAAA  
GTTTCGAGTGAAGGATGGAAGGTATGTGTGTCGGCTGAGCGGGAGAACAGGTACGACTGCCTTGGATCGA  
AAAAGTACAGCTACATGAACATCTGCAAAGAGTTCAGCTTGCCGCCCTGTGTGGATGAGAAGGATGTAAC  
ATACTCTATGGGCTCGGCAGCTGTGTCAAGATCGAGTCTCCTTGCTACCTTGCCTTCTCCTTGACAGC  
CCGTGCAGCCCGTGAACCCCTGCAACCCTGCAGCCCTGCAACCCGTGCAGCCCATATGATCCTTGCA  
ACCCGTGTATCCCTGTGGAAGCCGATTTCTGTAGGAAGATGATTTTG

**ACGCGT**ACGCGGCCGCTCGAGCAGAACTCATCTCAGAAGAGGATCTGGCAGCAAATGATATCCTGGATT  
ACAAGGATGACGACGATAAGGTTTAA



[View online »](#)

**Protein Sequence:** >RC215265 protein sequence  
 Red=Cloning site Green=Tags(s)

MAALSCLLDVSRDIKKVDRELRLRCIDFSTRCLCDLYMHPYCCDLHPYPYCLCYSKRSRSCGLCDL  
 YPCCLCDYKLYCLRPSLRSLERKAIRAIIEDEKRELAKLRRTTNRILASSCCSSNILGVSINVCGFEPDQVK  
 VRVKDGVKVCVSAERENRYDCLGSKKYSYMNICKEFSLPPCVDEKDVITYSYGLGSCVKIESPCYPCTSPCS  
 PCSPCNPSPCPCNPSPYDPCNPNPCYPCGSRFSCRKMIL

TRTRPLEQKLISEEDLAANDILDYKDDDDKV

**Chromatograms:** [https://cdn.origene.com/chromatograms/mk6447\\_f03.zip](https://cdn.origene.com/chromatograms/mk6447_f03.zip)

**Restriction Sites:** SgfI-MluI

**Cloning Scheme:**

Cloning sites used for ORF Shuttling:



\* The last codon before the Stop codon of the ORF

**ACCN:** NM\_024410

**ORF Size:** 750 bp

**OTI Disclaimer:** The molecular sequence of this clone aligns with the gene accession number as a point of reference only. However, individual transcript sequences of the same gene can differ through naturally occurring variations (e.g. polymorphisms), each with its own valid existence. This clone is substantially in agreement with the reference, but a complete review of all prevailing variants is recommended prior to use. [More info](#)

**OTI Annotation:** This clone was engineered to express the complete ORF with an expression tag. Expression varies depending on the nature of the gene.

**Components:** The ORF clone is ion-exchange column purified and shipped in a 2D barcoded Matrix tube containing 10ug of transfection-ready, dried plasmid DNA (reconstitute with 100 ul of water).

**Reconstitution Method:**

1. Centrifuge at 5,000xg for 5min.
2. Carefully open the tube and add 100ul of sterile water to dissolve the DNA.
3. Close the tube and incubate for 10 minutes at room temperature.
4. Briefly vortex the tube and then do a quick spin (less than 5000xg) to concentrate the liquid at the bottom.
5. Store the suspended plasmid at -20°C. The DNA is stable for at least one year from date of shipping when stored at -20°C.

**RefSeq:** [NM\\_024410.2](#), [NP\\_077721.1](#)

**RefSeq Size:** 1007 bp

**RefSeq ORF:** 753 bp

**Locus ID:** 4956

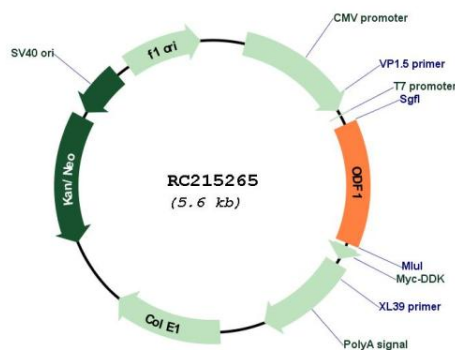
**UniProt ID:** [Q14990](#)

**Cytogenetics:** 8q22.3

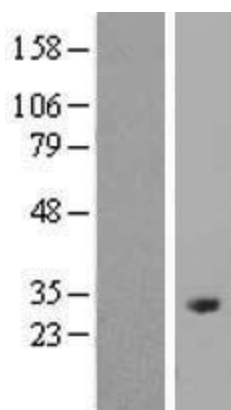
**MW:** 28.4 kDa

**Gene Summary:** The outer dense fibers are cytoskeletal structures that surround the axoneme in the middle piece and principal piece of the sperm tail. The fibers function in maintaining the elastic structure and recoil of the sperm tail as well as in protecting the tail from shear forces during epididymal transport and ejaculation. Defects in the outer dense fibers lead to abnormal sperm morphology and infertility. The human outer dense fibers contains at least 10 major proteins and this gene encodes the main protein. [provided by RefSeq, Jul 2008]

### Product images:



Circular map for RC215265



Western blot validation of overexpression lysate (Cat# [LY411277]) using anti-DDK antibody (Cat# [TA50011-100]). Left: Cell lysates from untransfected HEK293T cells; Right: Cell lysates from HEK293T cells transfected with RC215265 using transfection reagent MegaTran 2.0 (Cat# [TT210002]).