

Product datasheet for RC215253

PTCD2 (NM_024754) Human Tagged ORF Clone

Product data:

Product Type:	Expression Plasmids
Product Name:	PTCD2 (NM_024754) Human Tagged ORF Clone
Tag:	Myc-DDK
Symbol:	PTCD2
Mammalian Cell Selection:	Neomycin
Vector:	pCMV6-Entry (PS100001)
E. coli Selection:	Kanamycin (25 ug/mL)
ORF Nucleotide Sequence:	>RC215253 representing NM_024754 Red=Cloning site Blue=ORF Green=Tags(s)

TTTTGTAATACGACTCACTATAGGGCGGCCGGAATTCGTCGACTGGATCCGGTACCGAGGAGATCTGCC
GCCCGATCGCC

ATGGTCCGAGACAGTATGGCTGCTGCATTCGGCCCTCGAATCGAGTTCTCCTGCAGGCGCTGCAGATTT
TGGTGTATCCTGGGGTGGGAGGCTCCGGCTCTGTACGCTGCCGCTGCCCTCTCGGAGCTAAAAGATACCT
ACTTACAGATAATGTGGTGAATTTAAAAGAATTTCAACAAAAGAAAGTGGCTGTTGCATGTAATCTTTCT
GGCACTAAAGAACGTATTTAGAACTTGAAAAAGAACTGACCCAGAACAAGCTCATCTTGAAGGGG
AGTTGATAACCTTACTACATTTGTGTGAGTCTCGGGACCATGTGGAAGTGGCTAAAAATGTCATTTACAG
GTACCATGCAGAGAACAATAATTTCACTTTGGGGAGTATAAATTTGGACCGCTTTTTGTGAGGTTGTGT
TACGAGTTGATCTCGAGGAATTCGAGTGGAGCTCATGAAAGACCAGCATTTACGAGGTTTCTTCTCAG
ACTCCACATCATTCAATATTTTGTGATGATGTTATTTATCAAAGGCAAAATAAAAAGTCTTTGCAAGT
ATTGATAGAGATGAAAAACCAAGATGTGAAGTTCACCAAAGATACCTATGTTCTTGCTTTTGCAATTTGC
TACAACTGAATAGCCCTGAGTCTTTCAAATCTGTACTACATTAAGAGAAGAAGCTCTACTCAAAGGAG
AAATCTCTCCAGGAGAGCATCCTGTTTCGCTGTGGCATTAGCTCTGAATCAGAATGAGATGGCAAAAGC
TGTGTCCATTTTTCTCAAATCATGAATCCAGAAAGCATAGCCTGCATTAATTTAAATATTATAATCCAT
ATCCAGTCAAATATGTTGAAAACCTGATAAAGACTCTAAAAATGCTGCAGAAGGAAATTTATCAAAT
TTGTGAAAAGACATGTGTTCTCGGAGGAAGTGTGGCCAAAGTGAGGGAAAAAGTGAAGGATGTGCCTGC
CCTTGTGGCCAAATTTGATGAGATCTATGGGACTGCACATCACTGGCCAGGTCACTACTGATTCTTTG
GATGCTGTGCTCTGCCACACCCCGAGGACAGGAAATCTCACAGTTGCTATTAACAAGAGGATGGTCA
GCCGTCGCACCTTCCAGCCACTCAGCCAGTCCCTGTTGGCTGAG

ACGCGTACGCGGCCGCTCGAGCAGAACTCATCTCAGAAGAGGATCTGGCAGCAAATGATATCCTGGATT
ACAAGGATGACGACGATAAGGTTTAA



[View online »](#)

Protein Sequence: >RC215253 representing NM_024754
 Red=Cloning site Green=Tags(s)

MVRDSMAAAFRRPSNRVLLQALQILVYPGVGGSGSVSCRCPLGAKRYLLTDNVVKLKEFQQKKVAVACNLS
 GTKETYFRNLKKKL TQNKLILKGELITLLHLCESRDHVELAKNVIYRYHAENKNFTLGEYKFGPLFVRLC
 YELDLEESAVELMKDQHLRGFFSDSTSFNILMDMLFIKGYKSALQVLIEMKNQDVKFTKDTYVLAFAIC
 YKLNSPESFKICTTLREEALLKGEILSRRASCF AVALALNQEMAKAVSIFSQIMNPESIACINLNIIH
 IQSNMLENLIKTLKNAAEGLSKFVKRHVFSEEVLAKVREKVKDVPALVAKFDEIYGTLHITGQVTTDSL
 DAVLCHTPRDRKSHTLLLNKRMVSRRTFQPLSQSLLAE

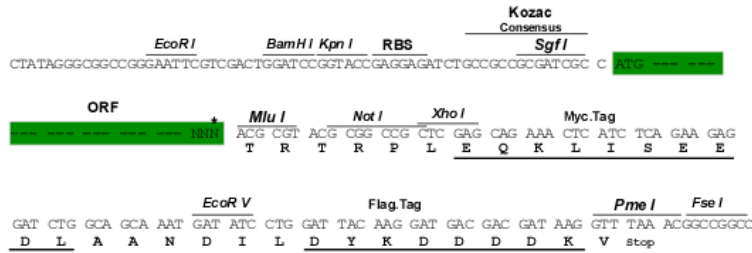
TRTRPLEQKLISEEDLAANDILDYKDDDDKV

Chromatograms: https://cdn.origene.com/chromatograms/mg2527_a03.zip

Restriction Sites: SgfI-MluI

Cloning Scheme:

Cloning sites used for ORF Shuttling:



* The last codon before the Stop codon of the ORF

ACCN: NM_024754

ORF Size: 1164 bp

OTI Disclaimer: The molecular sequence of this clone aligns with the gene accession number as a point of reference only. However, individual transcript sequences of the same gene can differ through naturally occurring variations (e.g. polymorphisms), each with its own valid existence. This clone is substantially in agreement with the reference, but a complete review of all prevailing variants is recommended prior to use. [More info](#)

OTI Annotation: This clone was engineered to express the complete ORF with an expression tag. Expression varies depending on the nature of the gene.

Components: The ORF clone is ion-exchange column purified and shipped in a 2D barcoded Matrix tube containing 10ug of transfection-ready, dried plasmid DNA (reconstitute with 100 ul of water).

Reconstitution Method:

1. Centrifuge at 5,000xg for 5min.
2. Carefully open the tube and add 100ul of sterile water to dissolve the DNA.
3. Close the tube and incubate for 10 minutes at room temperature.
4. Briefly vortex the tube and then do a quick spin (less than 5000xg) to concentrate the liquid at the bottom.
5. Store the suspended plasmid at -20°C. The DNA is stable for at least one year from date of shipping when stored at -20°C.

RefSeq: [NM_024754.5](#)

RefSeq Size: 2103 bp

RefSeq ORF: 1167 bp

Locus ID: 79810

UniProt ID: [Q8WV60](#)

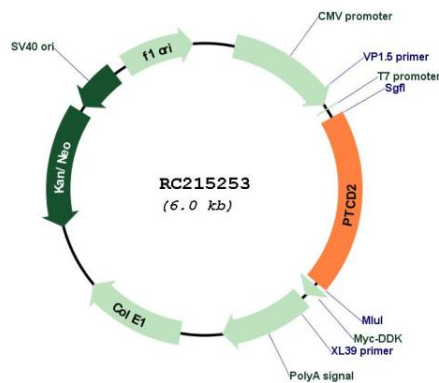
Cytogenetics: 5q13.2

Domains: PPR

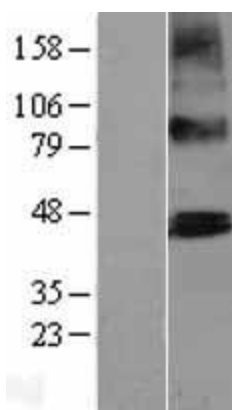
MW: 43.8 kDa

Gene Summary: Involved in mitochondrial RNA maturation and mitochondrial respiratory chain function. [UniProtKB/Swiss-Prot Function]

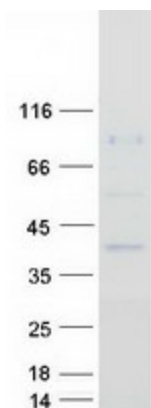
Product images:



Circular map for RC215253



Western blot validation of overexpression lysate (Cat# [LY403024]) using anti-DDK antibody (Cat# [TA50011-100]). Left: Cell lysates from untransfected HEK293T cells; Right: Cell lysates from HEK293T cells transfected with RC215253 using transfection reagent MegaTran 2.0 (Cat# [TT210002]).



Coomassie blue staining of purified PTCD2 protein (Cat# [TP315253]). The protein was produced from HEK293T cells transfected with PTCD2 cDNA clone (Cat# RC215253) using MegaTran 2.0 (Cat# [TT210002]).