

## Product datasheet for RC215251

### Tenascin C (TNC) (NM\_002160) Human Tagged ORF Clone

#### Product data:

Product Type:	Expression Plasmids
Product Name:	Tenascin C (TNC) (NM_002160) Human Tagged ORF Clone
Tag:	Myc-DDK
Symbol:	Tenascin C
Synonyms:	150-225; DFNA56; GMEM; GP; HXB; JI; TN; TN-C
Mammalian Cell Selection:	Neomycin
Vector:	pCMV6-Entry (PS100001)
E. coli Selection:	Kanamycin (25 ug/mL)
ORF Nucleotide Sequence:	>RC215251 representing NM_002160 Red=Cloning site Blue=ORF Green=Tags(s)

TTTTGTAATACGACTCACTATAGGGCGGCCGGAATTCGTCGACTGGATCCGGTACCGAGGAGATCTGCCGCCGCGATCGCC

ATGGGGGCCATGACTCAGCTGTTGGCAGGTGTCTTTCTTGCTTTCCTTGCCTCGCTACCGAAGGTGGG  
TCCTCAAGAAAGTCATCCGGCACAAGCGACAGAGTGGGGTGAACGCCACCCTGCCAGAAGAGAACCAGCC  
AGTGGTGTAAACACGTTTACAACATCAAGCTGCCAGTGGGATCCCAGTGTTCGGTGGATCTGGAGTCA  
GCCAGTGGGGAGAAAGACCTGGCACCCTTCAGAGCCAGCGAAAGCTTTCAGGAGCACACAGTAGATG  
GGGAAAACCAGATTGTCTTCACACATCGCATCAACATCCCCCGCCGGCCTGTGGCTGTGCCGAGCCCC  
TGATGTTAAGGAGCTGCTGAGCAGACTGGAGGAGCTGGAGAACCCTGGTGTCTTCCCTGAGGGAGCAATGT  
ACTGCAGGAGCAGGCTGTCTCCAGCCTGCCACAGGCCGCTTGGACACCAGGCCCTTCTGTAGCGGTC  
GGGGCAACTTCAGCACTGAAGGATGTGGCTGTGTCTGCGAACCTGGCTGGAAAGGCCCAACTGCTCTGA  
GCCCCAATGTCCAGGCAACTGTCACCTTCGAGGCCGGTGCATTGATGGGCAGTGCATCTGTGACGACGGC  
TTCACGGGCGAGGACTGCAGCCAGCTGGCTTCCCCAGCGACTGCAATGACCAGGGCAAGTGCCTGAATG  
GAGTCTGCATCTGTTTCGAAGGCTACGCCGGGGCTGACTGCAGCCGTGAAATCTGCCAGTGCCTGCAG  
TGAGGAGCACGGCACATGTGTAGATGGCTTGTGTGTGTGCCACGATGGCTTTCAGGCGATGACTGCAAC  
AAGCCTCTGTGTCTCAACAATTGCTACAACCGTGGACGATGCGTGGAGAATGAGTGCCTGTGTGATGAGG  
GTTTCACGGGCGAAGACTGCAGTGAGCTCATCTGCCCAATGACTGCTTCGACCGGGCCGCTGCATCAA  
TGGCACCTGCTACTGCGAAGAAGGCTTTCACAGGTGAAGACTGCGGGAAACCCACCTGCCACATGCCTGC  
CACACCCAGGGCCGGTGTGAGGAGGGCAGTGTGTATGTGATGAGGGCTTTCGCCGTGTGGACTGCAGCG  
AGAAGAGGTGCTCTGCTGACTGTCACAATCGTGGCCGCTGTGTAGACGGGCGGTGTGAGTGTGATGATG  
TTTCACTGGAGCTGACTGTGGGAGCTCAAGTGTCCCAATGGCTGCAGTGGCCATGGCCGCTGTGTCAAT  
GGGCAGTGTGTGTGATGAGGGCTATACTGGGAGGACTGCAGCCAGCTACGGTCCCCAATGACTGTC  
ACAGTCGGGGCCGCTGTGTGAGGGCAAATGTGTATGTGAGCAAGGCTTCAAGGGCTATGACTGCAGTGA  
CATGAGCTGCCAATGACTGTACCAGCACGGCCGCTGTGTGAATGGCATGTGTGTTGTGATGACGGC



[View online >](#)

TACACAGGGGAAGACTGCCGGGATCGCCAATGCCCCAGGGACTGCAGCAACAGGGGCCTCTGTGTGGACG  
GACAGTGCCTGTGTGAGGACGGCTTACCGGCCCTGACTGTGCAGAACTCTCTGTCCAAATGACTGCCA  
TGGCCGGGGTTCGCTGTGTGAATGGGCAGTGCCTGTGCCATGAAGGATTTATGGGCAAAGACTGCAAGGAG  
CAAAGATGTCCCAGTACTGTATGCCCAGGGCCGCTGCGTGGACGGCCAGTGCATCTGCCACGAGGGCT  
TCACAGGCCTGGACTGTGGCCAGCACTCTGCCCCAGTACTGCAACAATTAGGACAATGCGTCTCGGG  
CCGCTGCATCTGCAACGAGGGCTACAGCGGAGAAGACTGCTCAGAGGTGTCTCTCCCAAAGACCTCGTT  
GTGACGAAGTACGCGAAGAGACGGTCAACCTGGCCTGGGACAATGAGATGCGGGTACAGGATACCTTG  
TCGTGTACACGCCACCCACGAGGGTGGTCTGGAATGCAGTTCGCTGTGCTGGGGACCAGACGCTCCAC  
CATCATCCGGGAGCTGGAGCCTGGTGTGGAGTACTTTATCCGTGTATTTGCCATCTGGAGAACAAGAAG  
AGCATTCTGTACAGGCCAGGGTGGCCAGTACTTACCTGCACCTGAAGGCCTGAAATTCAGTCCATCA  
AGGAGACATCTGTGGAAGTGGAGTGGGATCCTCTAGACATTGCTTTTGAACCTGGGAGATCATCTTCCG  
GAATATGAATAAAGAAGATGAGGAGAGATCACAAAAGCCTGAGGAGGCCAGAGACCTCTTACCGGCAA  
ACTGGTCTAGCTCCTGGCAAGAGTATGAGATATCTCTGCACATAGTAAAAACAATACCCGGGGCCCTG  
GCCTGAAGAGGGTGACCACCACACGCTTGGATGCCCCAGCCAGATCGAGGTGAAAGATGCACAGACAC  
CACTGCCTTGATCACCTGGTTCAAGCCCTGGCTGAGATCGATGGCATTGAGCTGACCTACGGCATCAA  
GACGTGCCAGGAGACCGTACCACCATCGATCTCACAGAGGACGAGAACCAGTACTCCATCCGGAACTGA  
AGCCTGACACTGAGTACGAGGTGTCCTCATCTCCCGCAGAGGTGACATGTCAAGCAACCAGCCAAAGA  
GACCTTCAACAACAGGCCTCGATGCTCCCAGGAATCTTCGACGTGTTTCCAGACAGATAACAGCATCACC  
CTGGAATGGAGGAATGGCAAGGCAGCTATTGACAGTTACAGAATTAAGTATGCCCCATCTCTGGAGGGG  
ACCACGCTGAGGTTGATGTTCCAAAGAGCCAACAAGCCACAACCAAAACCACTCACAGGTCTGAGGCC  
GGGAATGAATATGGGATGGAGTTTCTGCTGTGAAGGAAGACAAGGAGAGCAATCCAGCGACCATCAAC  
GCAGCCACAGAGTTGGACACGCCAAGGACCTTACGGTTTCTGAAACTGCAGAGACCAGCCTGACCCTGC  
TCTGGAAGACACCGTTGGCCAAATTTACCCTACCCTCAATTACAGTCTCCCAACAGGCCAGGAGTACAAT  
GGGAGTGCAGCTTCCAAGAAACACCACTTCTATGCTGAGAGGGCTGGAACCCAGGAGTACAAT  
GTCCTCTGACAGCCGAGAAAGGACAGACAAGAGCAAGCCGACGCTGGAAGGCATCCACTGAACAAG  
CCCCTGAGCTGGAAAACCTCACCGTACTGAGGTTGGCTGGGATGGCCTCAGACTCAACTGGACCGCAGC  
TGACCAGGCCTATGAGCACTTTATCATTAGGTGCAGGAGGCCAACAAGGTGGAGGCAGCTCGGAACCTC  
ACCGTGCCTGGCAGCCTTCGGGCTGTGGACATACCGGCCCTCAAGGCTGTACGCCTTATACAGTCTCCA  
TCTATGGGGTATCCAGGGCTATAGAACCAGTGTCTCTGCTGAGGCCCCACAGGGGAACTCCCAA  
TTTGGGAGAGGTCGTGGTGGCCAGGTGGGCTGGGATGCCCTCAAACCTCAACTGGACTGCTCCAGAAGG  
GCCTATGAGTACTTTTTTATTAGGTGCAGGAGGCTGACACAGTACAGGAGCCAGAACCTCACCGTCC  
CAGGAGGACTGAGGTCCACAGACCTGCCTGGGCTCAAAGCAGCCACTCATTATACCATCACCATCCGCGG  
GGTCACTCAGGACTTCAGCACAACCCCTCTCTCTGTTGAAGTCTTGACAGAGGAGGTTCCAGATATGGGA  
AACCTCACAGTGACCGAGGTTAGCTGGGATGCTCTCAGACTGAACTGGACCACGCCAGATGGAACCTATG  
ACCAGTTTACTATTAGGTCCAGGAGGCTGACCAGGTGGAAGAGGCTCACAATCTCACGGTTCCTGGCAG  
CCTGCGTTCATGGAAATCCCAGGCCTCAGGGCTGGCACTCCTTACACAGTACCCCTGCACGGCGAGGTC  
AGGGGCCACAGCACTCGACCCCTTGCTGTAGAGGTCGTACAGAGGATCTCCACAGTGGGAGATTTAG  
CCGTGTCTGAGGTTGGCTGGGATGGCCTCAGACTCAACTGGACCCAGCTGACAATGCCTATGAGCACTT  
TGTCACTCAGGTGCAGGAGTCAACAAGTGGAGGCAGCCAGAACCTCACGTTGCCTGGCAGCCTCAGG  
GCTGTGGACATCCCGGGCTCGAGGCTGCCACGCCTTATAGAGTCTCCATCTATGGGGTATCCGGGGCT  
ATAGAACCACAGTACTCTCTGCTGAGGCCTCCACAGCCAAAGAACCTGAAATGGAACTTAAATGTTTC  
TGACATAACTCCCAGAGCTTCAATCTCTCCTGGATGGCTACCGATGGGATCTTCGAGACCTTTACCATT  
GAAATTATTGATTCGAATAGGTTGCTGGAGACTGTGGAATATAATATCTCTGGTGTGAACGAACTGCC  
ATATCTCAGGGCTACCCCTAGTACTGATTTTATTGTCTACCTCTCTGGACTTGTCCCAGCATCCGGAC  
CAAAACCATCAGTGCCACAGCCACGACAGAGGCCCTGCCCTTCTGGAAAACCTAACATTTCCGACATT  
AATCCCTACGGGTTACAGTTTCTGGATGGCATCGGAGAATGCCTTTGACAGCTTCTAGTAACGGTGG  
TGGATTCTGGAAAGCTGTGGACCCCAAGGAATCACACTTTCAGGAACCCAGAGGAAGCTGGAGCTTAG  
AGGCCTCATAACTGGCATTGGCTATGAGGTTATGGTCTCTGGCTTACCCAAGGGCATCAAACCAAGCCC  
TTGAGGGCTGAGATTGTTACAGAAGCCGAACCGGAAGTTGACAACCTTCTGGTTTCAGATGCCACCCAG  
ACGTTTCCGTCTGCTCTGGACAGCTGATGAAGGGGCTTTCGACAATTTTGTCTCAAAATCAGAGATAC  
CAAAAAGCAGTCTGAGCCACTGGAATAAACCCTACTTCCCCGAACGTACCAGGGACTTAACAGGTCTC  
AGAGAGGCTACTGAATACGAAATGAACTCTATGGAATAAGCAAAGGAAGGCGATCCCAGACAGTCACTG

CTATAGCAACAACAGCCATGGGCTCCCCAAGGAAGTCATTTTCTCAGACATCACTGAAAATTCGGCTAC  
TGTCAGCTGGAGGGCACCCACAGCCCAAGTGGAGAGCTTCGGATTACCTATGTGCCATTACAGGAGGT  
ACACCCCTCATGGTAACTGTGGACGGAACCAAGACTCAGACCAGGCTGGTGAAACTACACCTGGCGTGG  
AGTACCTTGTGACATCATCGCCATGAAGGGCTTTGAGGAAAGTGAACCTGTCTCAGGGTCATTACCAC  
AGCTCTGGATGGCCATCTGGCCTGGTGACAGCCAACATCACTGACTCAGAAGCCTTGGCCAGGTGGCAG  
CCAGCCATTGCCACTGTGGACAGTTATGTCATCTCCTACACAGGGGAGAAAAGTCCAGAAAATTACACGCA  
CGGTGTCGGGGAACACAGTGGAGTATGCTCTGACCGACCTCGAGCCTGCCACGGAATACACACTGGAAT  
CTTTGCAGAGAAAAGGGCCCGAGAAGAGCTCAACCATCACTGCCAAGTTCACAACAGACCTCGATTCTCCA  
AGAGACTTGACTGCTACTGAGGTTCACTCGAAAAGTGCCTCCTTACCTGGCGACCCCCCGGGCATCAG  
TCACCGGTTACCTGCTGGTCTATGAATCAGTGGATGGCACAGTCAAGGAAGTCATTGTGGGTCCAGATAC  
CACCTCTACAGCCTGGCAGACCTGAGCCCATCCACCCACTACACAGCCAAGATCCAGGCACTCAATGGG  
CCCCTGAGGAGCAATATGATCCAGACCATCTTACCACAATTGGACTCCTGTACCCTTCCCCAAGGACT  
GCTCCCAAGCAATGCTGAATGGAGACACGACCTCTGGCCTCTACACCATTTATCTGAATGGTGATAAGGC  
TCAGGCGCTGGAAGTCTTCTGTGACATGACCTCTGATGGGGTGGATGGATTGTGTTCTGAGACGCAA  
AACGGACGCGAGAAGTCTACCAAAAAGTGAAGGCATATGCTGCTGGATTGGGGACCGCAGAGAAGAAT  
TCTGGCTTGGGCTGGACAACCTGAACAAAATCACAGCCAGGGGAGTACGAGCTCCGGGTGGACCTGCG  
GGACCATGGGGAGACAGCCTTTGCTGTCTATGACAAGTTCAGCGTGGGAGATGCCAAGACTCGCTACAAG  
CTGAAGGTGGAGGGGTACAGTGGGACAGCAGGTGACTCCATGGCCTACCAATGGCAGATCCTTCTCCA  
CCTTTGACAAGGACACAGATTAGCCATCACCAACTGTGCTCTGTCTACAAAGGGGCTTCTGGTACAG  
GAACTGTCACCGTGTCAACCTGATGGGGAGATATGGGGACAATAACCACAGTCAGGGCGTTAACTGGTTC  
CACTGGAAGGGCCACGAACACTCAATCCAGTTTGCTGAGATGAAGCTGAGACCAAGCAACTCAGAAATC  
TTGAAGGCAGGCGCAACGGGCA

ACGCGTACGCGGCGCTCGAGCAGAACTCATCTCAGAAGAGGATCTGGCAGCAAATGATATCCTGGATT  
ACAAGGATGACGACGATAAGGTTTAA

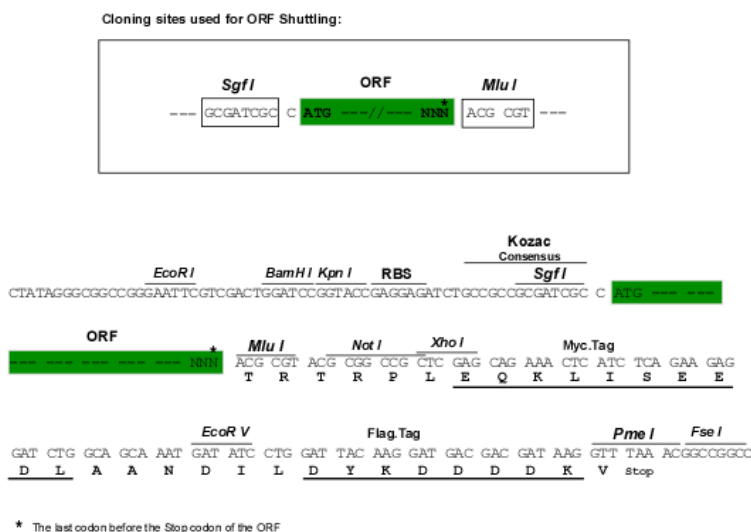
**Protein Sequence:** >RC215251 representing NM\_002160  
 Red=Cloning site Green=Tags(s)

MGAMTQLLAGVFLAFLALATEGGVLKQVIRHKRQSGVNTLPEENQPVVFNHVNLIKLPVGSQCSVDLES  
 ASGEKDLAPPSESESFQEHTVDGENQIVFTHRINIPRRACGCAAAPDVKELLSRLEENLVSSLREQC  
 TAGAGCCLQPATGRLDTRPFCSGRGNFSTEGCGVCEPGWKGPNCSEPECPGNCHLRGRCIDGQCICDDG  
 FTGEDCSQLACPSDCNDQKCVNGVICIFEGYAGADCSREICPVPCSEEHGTCVDGLCVCHDGFAGDDCN  
 KPCLCLNCCYNRGRVCVENECVDEGFTGEDCSELICPNDCFDRGRCINGTCYCEEFTGEDCGKPTCPHAC  
 HTQGRCEEQCVCEGFAVDCSEKRCPADCHNRGRCVDGRCECDGFTGADCGELKCPNGCSGHGRVCN  
 GQVCVDEGYTGEDCSQLRCPNDCHSRGRCVEGKCVCEQGFKGYDCSDMSPNDCHQHGRVCNMGVCDDG  
 YTGEDCRDRQCPDRCSNRGLCVDGQVCEDGFTGPDCAELSCPNDCHGRGRCVNGQVCHEGFMGDKCE  
 QRCPSDCHGQRCVDGQICHEGFTGLDCGQHSCPSDCNNLQCVSGRCICNEGYSGEDCSEVSPPKDLV  
 VTEVTEETVNLAWDNEMRVTEYL VVYTPTHEGGLEMQFRVPGDQTSTIIRELEPGVEYFIRVFAILENKK  
 SIPV SARVATYLPAPGLKFKSIKETSVEVEWPLDIAFETWEIIFRNMNKEDEGEITKSLRRPETS YRQ  
 TGLAPGQEYEISLHIVKNNTRGPGLRVTTTRLDAPSQIEVKDVTDTTALITWFKPLAEIDGIELTYGIK  
 DYPGDRTTIDLTEENQYSIGNLKPDEYEVSLISRRGMSSNPAKETFTTGLDAPRNLRRVSQTNSIT  
 LEWRNGKAAIDSYRIKYAPISGGDHAEDVDPKSQQATTKTTLTGLRPGTEYIGVSAVKEDKESNPATIN  
 AATELDTPKDLQVSETAETSLTLLWKTPLAKFDRYRLNYSLPTGQWVGVLPRNTTSYVLRGLEPGQEYN  
 VLLTAEKGRHKS KPARVKASTEQAPELENLTVTEVGWDGLRLNWTAADQAYEHFIIQVQEAANKVEAARNL  
 TVPGLSRAVDIPGLKAATPYTVSIYGVIIQGYRTPVLSAEASTGETPNLGEVVVAE VGDALKNWTAPEG  
 AYEYFFIQVQEAADTVEAAQNLTPVGGRLSTDLPGLKAATHYITIRGVTQDFSTTPLSVEVLTEVPDMG  
 NLTVTEVSWDALRLNWTTPDGTQDFTIQVQEAADQVEEAHNLTPVGLSRSMIEPGLRAGTPYTVTLHGEV  
 RGHSTRPLAVEVVTEDLPQLGDLAVSEVGWDGLRLNWTAADNAYEHFVIQVQEVNVEAAQNLTPGLSLR  
 AVDIPGLEAATPYRVSIYGVIRGYRTPVLSAEASTAKEPEIGNLVSDITPESFNL SWMATDGIFFETFI  
 EIIDSNRLLLETVEYNISGAERTAHISGLPPSTDFIVYLSGLAPSIRTKTISATATTEALPLENLTISDI  
 NPYGFTVSWMASENAFDSFLVTVVDSGKLLDPQEF TSGTQRKLELRGLITGIGYEVMSGFTQGHQTKP  
 LRAEIVTEAEPEVDNLLVSDATPDGFRLSWTADEGVDFNFKIRDTKKQSEPLEITLLAPERTDRLTGL  
 REATEYEIELYGISKGRRSQTVSAIATTAMGSPKEVIFSDITENSATVSWRAPTAQVESFRITYVPITGG  
 TPSMVTVDGKTQTRLVKLIPGVEYLVSIAMKGFEESEPVSGSFTTALDGPGLVTANITDSEALARWQ  
 PAIATVDSYVISYTGKVEITRTVSGNTVEYALTDLEPATEYTLRIFAEKGPQKSTITAKFTTDLDSP  
 RDLTATEVQSETALLTWRPPRASVTGYLLVYESVDGTVKEVIVGPDTTSYSLADLSPSTHYTAKIQALNG  
 PLRSNMIQTIFTTIGLLYFPKDCSQAMLNGDTSGLYTIYLNKDQAQALEVFCDMTSDGGGWIVFLRRK  
 NGRENFYQNWKAYAAGFGDRREEFWLGLDNLNKITAQQQYELRVDLRDHGETAFVYDKFSVGDATRYK  
 LKVEGYSGTAGDSMAYHNGRSFSTFDKDTDSAITNCALS YKGAFWYRNCHRVNLMGRYGDNNHSQGVNWF  
 HWKGHEHSIQFAEMKLRPSNFRNLEGRKRA

TRTRPLEQKLI SEEDLAANDILDYKDDDDKV

**Chromatograms:** [https://cdn.origene.com/chromatograms/mg3517\\_c01.zip](https://cdn.origene.com/chromatograms/mg3517_c01.zip)

**Restriction Sites:** SgfI-MluI

**Cloning Scheme:**

**ACCN:** NM\_002160

**ORF Size:** 6603 bp

**OTI Disclaimer:** Due to the inherent nature of this plasmid, standard methods to replicate additional amounts of DNA in E. coli are highly likely to result in mutations and/or rearrangements. Therefore, OriGene does not guarantee the capability to replicate this plasmid DNA. Additional amounts of DNA can be purchased from OriGene with batch-specific, full-sequence verification at a reduced cost. Please contact our customer care team at [custsupport@origene.com](mailto:custsupport@origene.com) or by calling 301.340.3188 option 3 for pricing and delivery.

The molecular sequence of this clone aligns with the gene accession number as a point of reference only. However, individual transcript sequences of the same gene can differ through naturally occurring variations (e.g. polymorphisms), each with its own valid existence. This clone is substantially in agreement with the reference, but a complete review of all prevailing variants is recommended prior to use. [More info](#)

**OTI Annotation:** This clone was engineered to express the complete ORF with an expression tag. Expression varies depending on the nature of the gene.

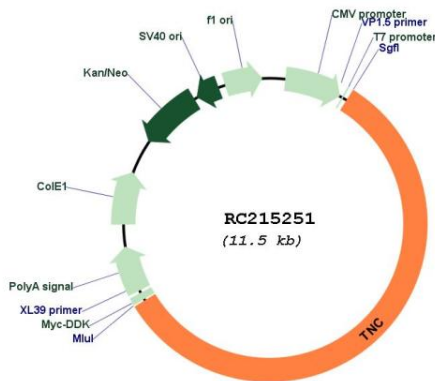
**Components:** The ORF clone is ion-exchange column purified and shipped in a 2D barcoded Matrix tube containing 10ug of transfection-ready, dried plasmid DNA (reconstitute with 100 ul of water).

**Reconstitution Method:**

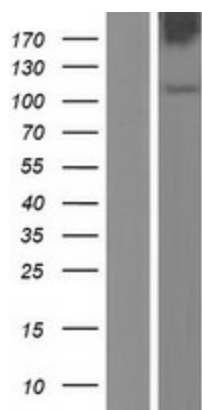
1. Centrifuge at 5,000xg for 5min.
2. Carefully open the tube and add 100ul of sterile water to dissolve the DNA.
3. Close the tube and incubate for 10 minutes at room temperature.
4. Briefly vortex the tube and then do a quick spin (less than 5000xg) to concentrate the liquid at the bottom.
5. Store the suspended plasmid at -20°C. The DNA is stable for at least one year from date of shipping when stored at -20°C.

**RefSeq:** [NM\\_002160.4](#)  
**RefSeq Size:** 7560 bp  
**RefSeq ORF:** 6606 bp  
**Locus ID:** 3371  
**UniProt ID:** [P24821](#)  
**Cytogenetics:** 9q33.1  
**Domains:** toxin\_2, FBG, FN3, EGF, EGF  
**Protein Families:** Druggable Genome, ES Cell Differentiation/IPS, Secreted Protein, Transmembrane  
**Protein Pathways:** ECM-receptor interaction, Focal adhesion  
**MW:** 240.91 kDa  
**Gene Summary:** This gene encodes an extracellular matrix protein with a spatially and temporally restricted tissue distribution. This protein is homohexameric with disulfide-linked subunits, and contains multiple EGF-like and fibronectin type-III domains. It is implicated in guidance of migrating neurons as well as axons during development, synaptic plasticity, and neuronal regeneration. [provided by RefSeq, Jul 2011]

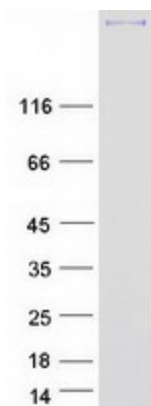
### Product images:



Circular map for RC215251



Western blot validation of overexpression lysate (Cat# [LY419496]) using anti-DDK antibody (Cat# [TA50011-100]). Left: Cell lysates from untransfected HEK293T cells; Right: Cell lysates from HEK293T cells transfected with RC215251 using transfection reagent MegaTran 2.0 (Cat# [TT210002]).



Coomassie blue staining of purified TNC protein (Cat# [TP315251]). The protein was produced from HEK293T cells transfected with TNC cDNA clone (Cat# RC215251) using MegaTran 2.0 (Cat# [TT210002]).