

## Product datasheet for RC215246

### Syntaxin 16 (STX16) (NM\_001001433) Human Tagged ORF Clone

#### Product data:

Product Type:	Expression Plasmids
Product Name:	Syntaxin 16 (STX16) (NM_001001433) Human Tagged ORF Clone
Tag:	Myc-DDK
Symbol:	Syntaxin 16
Synonyms:	SYN16
Mammalian Cell Selection:	Neomycin
Vector:	pCMV6-Entry (PS100001)
E. coli Selection:	Kanamycin (25 ug/mL)
ORF Nucleotide Sequence:	>RC215246 representing NM_001001433 Red=Cloning site Blue=ORF Green=Tags(s)

TTTTGTAATACGACTCACTATAGGGCGGCCGGAATTCGTCGACTGGATCCGGTACCGAGGAGATCTGCC  
GCC**CGATCGCC**

ATGGCCACCAGGCGTTTAAACCGACGCTTCTTGTGTTGCGGAATAATCCATCCAAAACCGGCAGCTGT  
TAGCCGAGCAAGTGAGTAGTCACATCACCTCCAGCCCTCTGCATTACGTAGCATTGCTGCGGAGCTGGA  
CGAGCTTGCTGATGACCGTATGGCACTGGTGTGAGGCATCAGCTTAGATCCAGAAGCAGCGATTGGTGTG  
ACAAAACGGCCACCTCTAAGTGGTGGATGGAGTGGATGAAATTCAGTATGATGTTGGCCGGATTAAGC  
AGAAGATGAAAGAATTGGCCAGCCTTCATGACAAGCATTTAAACAGACCCACCCTGGATGACAGCAGCGA  
AGAGGAACATGCCATTGAGATAACTACCCAAGAGATCACTCAGCTCTCCACAGGTGCCAGCGTGCCGCTG  
CAGGCCCTGCCGAGCCGGGCCCGGGCCTGCTCCGAGCAGGAGGGGCGGCTGCTTGGGAACGTGGTGGCT  
CGCTGGCGCAGGCCCTGCAGGAACCTCCACCAGCTTCCGGCACGCACAGTCAGGCTACCTCAAACGCAT  
GAAGAATCGAGAGGAAAGATCCCAGCATTTTTTCGACACATCAGTACCACTAATGGATGATGGAGACGAT  
AACACTCTTTACCATCGGGGTTTACAGAGGACCAGTTAGTTCGGTGGAGCAGAACACACTGATGGTGG  
AAGAGCGGGAACGAGAGATTCCGAGATTGTACAGTCCATTTCTGACCTGAATGAAATATTCAGGGACTT  
AGGGGCGATGATTGTAGAACAGGGTACAGTCCCTTGACAGAATTGACTATAACGTTGAACAGTCCTGTATC  
AAAACCTGAAGATGGTTTGAACAGCTTCAAGGCAGAACAGTATCAAAGAAGAATCGGAAGATGCTTG  
TGATTTAATATTATTTGTCATCATCATTGTGCTCATTGTTGCTCCTCGTTGGCGTGAAGTCTCGA

**ACGCGT**ACGCGGCCGCTCGAGCAGAAACTCATCTCAGAAGAGGATCTGGCAGCAAATGATATCCTGGATT  
ACAAGGATGACGACGATAAGGTTTAA



[View online »](#)

**Protein Sequence:** >RC215246 representing NM\_001001433  
Red=Cloning site Green=Tags(s)

MATRRLDAFLLLRNNSIQNRQLLAEQVSSHITSSPLHSRSIAAELDELADDRMALVSGISLDPEAAIGV  
 TKRPPPKWVDGVDEIQYDVGRKQKMKELASLHDKHLNRPTLDDSEEEHAIEITTQEITQLFHRCQRAV  
 QALPSRARACSEQEGRLLGNVVASLAQALQELSTFRHAQSGYLKRMKNREERSQHFFDTSVPLMDDGDD  
 NTLYHRGFTEQQLVLEQNTLMVEEREREIRQIVQISIDLNEIFRDLGAMIVEQGTVLDRIDYNVEQSCI  
 KTEDGLKQLHKAQYQKKNRKMVLILILFVIIIVLIVVLVGVKSR

TRTRPLEQKLISEEDLAANDILDYKDDDDKV

**Chromatograms:** [https://cdn.origene.com/chromatograms/mk8052\\_c09.zip](https://cdn.origene.com/chromatograms/mk8052_c09.zip)

**Restriction Sites:** SgfI-MluI

**Cloning Scheme:**



**ACCN:** NM\_001001433

**ORF Size:** 975 bp

**OTI Disclaimer:** The molecular sequence of this clone aligns with the gene accession number as a point of reference only. However, individual transcript sequences of the same gene can differ through naturally occurring variations (e.g. polymorphisms), each with its own valid existence. This clone is substantially in agreement with the reference, but a complete review of all prevailing variants is recommended prior to use. [More info](#)

**OTI Annotation:** This clone was engineered to express the complete ORF with an expression tag. Expression varies depending on the nature of the gene.

**Components:** The ORF clone is ion-exchange column purified and shipped in a 2D barcoded Matrix tube containing 10ug of transfection-ready, dried plasmid DNA (reconstitute with 100 ul of water).

**Reconstitution Method:**

1. Centrifuge at 5,000xg for 5min.
2. Carefully open the tube and add 100ul of sterile water to dissolve the DNA.
3. Close the tube and incubate for 10 minutes at room temperature.
4. Briefly vortex the tube and then do a quick spin (less than 5000xg) to concentrate the liquid at the bottom.
5. Store the suspended plasmid at -20°C. The DNA is stable for at least one year from date of shipping when stored at -20°C.

**RefSeq:** [NM\\_001001433.3](#)

**RefSeq Size:** 4959 bp

**RefSeq ORF:** 978 bp

**Locus ID:** 8675

**UniProt ID:** [O14662](#)

**Cytogenetics:** 20q13.32

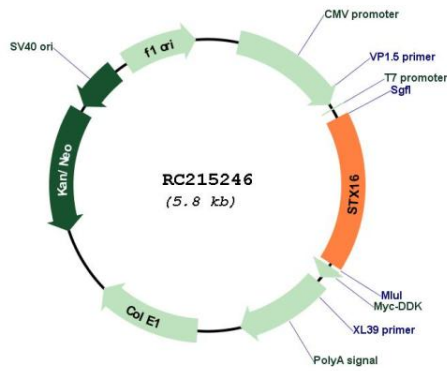
**Protein Families:** Druggable Genome, Transmembrane

**Protein Pathways:** SNARE interactions in vesicular transport

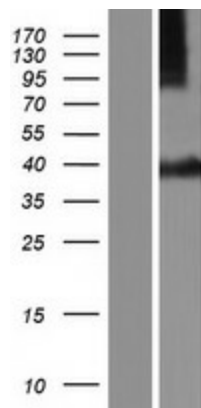
**MW:** 36.9 kDa

**Gene Summary:** This gene encodes a protein that is a member of the syntaxin or t-SNARE (target-SNAP receptor) family. These proteins are found on cell membranes and serve as the targets for V-SNARES (vesicle-SNAP receptors) permitting specific synaptic vesicle docking and fusion. A microdeletion in the region of chromosome 20 where this gene is located has been associated with pseudohypoparathyroidism type Ib. Multiple transcript variants have been found for this gene. Read-through transcription also exists between this gene and the neighboring downstream aminopeptidase-like 1 (NPEPL1) gene. [provided by RefSeq, Mar 2011]

Product images:



Circular map for RC215246



Western blot validation of overexpression lysate (Cat# [LY424352]) using anti-DDK antibody (Cat# [TA50011-100]). Left: Cell lysates from untransfected HEK293T cells; Right: Cell lysates from HEK293T cells transfected with RC215246 using transfection reagent MegaTran 2.0 (Cat# [TT210002]).