

Product datasheet for **RC215243**

SAMD4A (NM_015589) Human Tagged ORF Clone

Product data:

Product Type:	Expression Plasmids
Product Name:	SAMD4A (NM_015589) Human Tagged ORF Clone
Tag:	Myc-DDK
Symbol:	SAMD4A
Synonyms:	SAMD4; SMAUG; SMAUG1; SMG; SMGA
Mammalian Cell Selection:	Neomycin
Vector:	pCMV6-Entry (PS100001)
E. coli Selection:	Kanamycin (25 ug/mL)



[View online »](#)

ORF Nucleotide Sequence:

>RC215243 representing NM_015589
 Red=Cloning site Blue=ORF Green=Tags(s)

TTTTGTAATACGACTCACTATAGGGCGGCCGGGAATTCGTGACTGGATCCGGTACCGAGGAGATCTGCC
 GCC**GCGATCGCC**

ATGTTTCGCGACCAGGTCGGGGTCTGGCGGGCTGGTTTAAAGGGCTGGAACGAGTGCAGCAGACTGTTG
 CGCTGCTGTCGCTGCTCAAGCGGTGAGCCAGACCCAGGCCCGCTTCTCCAGCTCTGCCTGGAGCACTC
 GCTGGCCGACTGCGCCGAGCTGCACGCTCTCGAACCGGAGGCCAACAGCCCCGGAATCATTAACCAATGG
 CAACAGGAATCCAAGGATAAAGTGATTTCCCTCTGTTAACTCATCTGCCTTTGCTGAAGCCAGGAAACC
 TCGACGCGAAAGTAGAATATATGAAACTGCTGCCAAAATCCTGGCTCACTCTATTGAACACAACCAGCA
 CATTGAGGAGAGCAGGCAGCTGCTGTCTATGCTTTGATACATCCAGCCACTTCGTTAGAAGACCGTAGT
 GCTTTAGCCATGTGGCTGAATCACTTGGAGACCCGACGTCGACCAGCTTTGGTGGCCAGAACCAGGCC
 GCTCAGACTCTGTGGATTATGGACAGACACTACTATCACAAAGACAGAACTCTGATGACAAGCTCAA
 TGGGTGGCAGAACTCTCGGGATTCTGGGATTTGCATCAATGCCTCCAACGGCAGGACAAAAGCATGGGG
 TGTGAGAAATGGCCATGTGCCCTCTACTCTCCTCATCTGTCCCCACCACAATCAATACGATTGGAACCA
 GCACAAGTACAATTCTCTCAGGCCAGGCACACCACAGCCCTTTGAAACGATCTGTGTCCCTTACCCACC
 CATGAATGTGCCAAACCAGCCTCTAGGACATGGATGGATGTCTCATGAGGACTTACGAGCTAGAGGACCC
 CAGTGCCCTCCCATCCGATCATGCCCCCTGTCTCCACAAAGCAGTGTAGCCTCTTCAGGAAGTGGTGGGA
 GTGAACACTTAGAAGATCAGACCACTGCTCGTAACACATTCCAAGAAGAAGGTAGTGGGATGAAAGATGT
 TCCAGCCTGGCTGAAAAGCCTCCGCCTGCACAAATATGCCCGCTTTTCTCCAGATGACCTATGAGGAG
 ATGATGGCCCTCACCGAGTGCCAGCTGGAGGCGCAGAATGTTACCAAAGGTGCAAGACACAAAATTGTCA
 TCAGATTTCAGAAGCTCAAAGAAAAGACAAAATCTCCTGAAGCTTTTGGAAAGGGACATCATCGAGGGGG
 CAGCCTGCGCATCCCGCTCCAGGAACTGCACCAGATGATCCTGACTCCGATCAAGGCCTACAGCTCCCCG
 AGCACCACCCCGAGGCTCGCCGCGGGAGCCCAAGGCCCGCGTCAGCCCTCACTGATGGGCCCGGAGA
 GCCAGAGCCCGACTGCAAAGATGGGGCCGAGCCACTGGCGCCACGGCCACCCCTCGGCCGGGCCAG
 CGGGGGGCTCCAGCCGACCCAGCTGAGCAGCTGCGATGGGGAGCTGGCCGTGCCCCCTGCCAGAGGGG
 GACCTCCCGGGCAGTTCACACGCGTCATGGGAAAGTGTGCACACAGCTCTTGGTCTCCAGACCTGATG
 AGGAAAAATAAGTTCCTATTTACAGCTCATAGACAAGTGTCTAATTCATGAGGCATTTACAGAGACACA
 GAAAAAAGATTGTTGTCATGAAACAGCAGGTGCAGAAGCTCTTTCGGTCTTCCCTCGGAAAACCTT
 CTAGACATATCAGGATATCGACAGCAAAGAAATCGAGGCTTTGGGCAATCCAACCTCCCTCCCGACGGCTG
 GCTCTGTGGGCGGTGGCATGGGCAGACGGAACCCGCGCCAGTACCAGATCCCTCTCGGAAACGTCCTTC
 CGCCCGCCTGGGCTCTTGGGCACCAGTGGATTCGTGAGCTCAAACCAGCGCAACACCACAGCTACCCCC
 ACCATCATGAAACAAGGAAGACAGAACCTGTGGTTTGCCAAACCCGGGGGAGCAATAGCATGCCAAGCC
 GCACCCACAGCTCAGTCCAGAGGACCCGCTCGCTGCCCGTGCACACTTCCCACAGAACATGCTGATGTT
 CCAGCAGCCAGAATTCAGCTTCCCGTGACCGAACCTGACATCAACAACAGGCTGGAGTCGTTGTGCCTC
 AGTATGACCGAACACGCCCTGGGAGACGGGGTTGACCGGACCTCCACCATC

AGCGGACCGACGCGTACGCGCCGCTCGAGCAGAAAATCATCTCAGAAGAGGATCTGGCAGCAAATGATATCC
 TGGATTACAAGGATGACGACGATAAGGTTTAA

Protein Sequence: >RC215243 representing NM_015589
Red=Cloning site Green=Tags(s)

```
MFRDQVGLAGWFKGWNECEQTVALLSLLKRVSTQARFLQLCLEHSLADCAELHVLEREANSPGIINQW
QQESKDKVISLILLTHLPLLKPGNLDAKVEYMKLLPKILAHSEIHNQHIIEESRQLLSYALIHPATSLIEDRS
ALAMWLNHLEDRTSTSFGGQNRGRSDSDVDYGGQTHYYHQIQNSDDKLNWQNSRDGICINASNWQDKSMG
CENGHVPLYSSSSVPTTINTIGTSTILSGQAHHSPLKRSVSLTPPMNVPNQPLGHGWMSHEDLRARGP
QCLPSPDHAPLSPQSSVASSGSGGEHLEDQTTARNTFQEEGSGMKDVPWLKSLRLHKYAALFSQMTYEE
MMALTECQLEAQNVTKGARHKIVISIQKLERQNLKSLERDIEGGSLRIPLQELHQMILTPIKAYSSP
STTPEARRRREPQAPRQPSLMGPESQSPDCKDGAATGATATPSAGASGGLQPHQLSSCDGELAVAPLPEG
DLPQGQFTRVMGKVCTQLLVSRPDEENISSYLQLIDKCLIEAFTETQKKRLLSWKQQVQKLFRSFPRKTL
LDISGVRQQRNRGFGQSNLPTAGSVGGMGRRNPRQYQIPSRNVPSARLGLLGTSGFVSSNQRTTATP
TIMKQGRQNLWFANPGGSNSMPSRTHSSVQRTRSLPVHTSPQNMLMFQQPEFQLPVTEPDINNRLSCL
SMTEHALGDGVDRTSTI
```

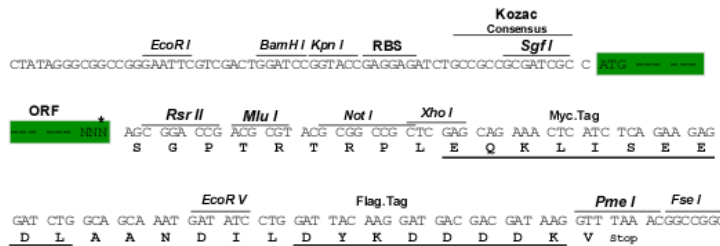
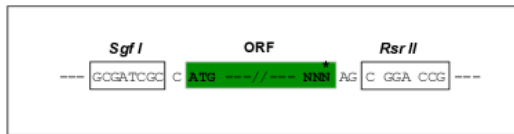
SGPTRRRLEQKLISEEDLAANDILDYKDDDDKV

Chromatograms: https://cdn.origene.com/chromatograms/mk8027_a10.zip

Restriction Sites: SgfI-RsrII

Cloning Scheme:

Cloning sites used for ORF Shutting:



* The last codon before the Stop codon of the ORF

ACCN: NM_015589

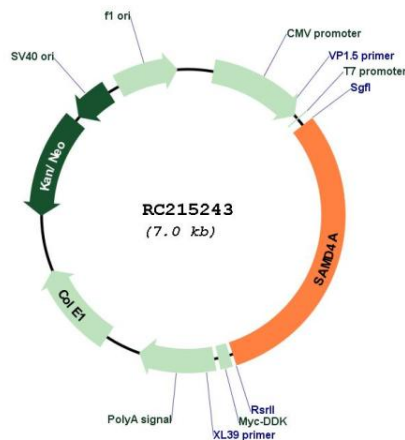
ORF Size: 2151 bp

OTI Disclaimer: The molecular sequence of this clone aligns with the gene accession number as a point of reference only. However, individual transcript sequences of the same gene can differ through naturally occurring variations (e.g. polymorphisms), each with its own valid existence. This clone is substantially in agreement with the reference, but a complete review of all prevailing variants is recommended prior to use. [More info](#)

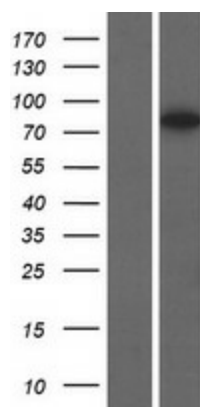
OTI Annotation: This clone was engineered to express the complete ORF with an expression tag. Expression varies depending on the nature of the gene.

Components:	The ORF clone is ion-exchange column purified and shipped in a 2D barcoded Matrix tube containing 10ug of transfection-ready, dried plasmid DNA (reconstitute with 100 ul of water).
Reconstitution Method:	<ol style="list-style-type: none"> 1. Centrifuge at 5,000xg for 5min. 2. Carefully open the tube and add 100ul of sterile water to dissolve the DNA. 3. Close the tube and incubate for 10 minutes at room temperature. 4. Briefly vortex the tube and then do a quick spin (less than 5000xg) to concentrate the liquid at the bottom. 5. Store the suspended plasmid at -20°C. The DNA is stable for at least one year from date of shipping when stored at -20°C.
RefSeq:	<u>NM_015589.4</u>
RefSeq Size:	2356 bp
RefSeq ORF:	2157 bp
Locus ID:	23034
UniProt ID:	<u>Q9UPU9</u>
Cytogenetics:	14q22.2
MW:	79.1 kDa
Gene Summary:	Sterile alpha motifs (SAMs) in proteins such as SAMD4A are part of an RNA-binding domain that functions as a posttranscriptional regulator by binding to an RNA sequence motif known as the Smaug recognition element, which was named after the Drosophila Smaug protein (Baez and Boccaccio, 2005 [PubMed 16221671]).[supplied by OMIM, Mar 2008]

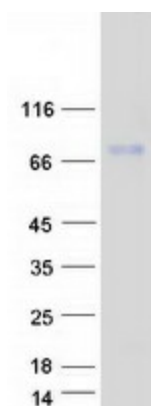
Product images:



Circular map for RC215243



Western blot validation of overexpression lysate (Cat# [LY414440]) using anti-DDK antibody (Cat# [TA50011-100]). Left: Cell lysates from untransfected HEK293T cells; Right: Cell lysates from HEK293T cells transfected with RC215243 using transfection reagent MegaTran 2.0 (Cat# [TT210002]).



Coomassie blue staining of purified SAM4A protein (Cat# [TP315243]). The protein was produced from HEK293T cells transfected with SAM4A cDNA clone (Cat# RC215243) using MegaTran 2.0 (Cat# [TT210002]).