

Product datasheet for **RC215235**

IL21 (NM_021803) Human Tagged ORF Clone

Product data:

Product Type: Expression Plasmids
Product Name: IL21 (NM_021803) Human Tagged ORF Clone
Tag: Myc-DDK
Symbol: IL21
Synonyms: CVID11; IL-21; Za11
Mammalian Cell Selection: Neomycin
Vector: pCMV6-Entry (PS100001)
E. coli Selection: Kanamycin (25 ug/mL)
ORF Nucleotide Sequence: >RC215235 representing NM_021803
Red=Cloning site Blue=ORF Green=Tags(s)

TTTTGTAATACGACTCACTATAGGGCGGCCGGAATTCGTCGACTGGATCCGGTACCGAGGAGATCTGCC
GCC**CGGATCGCC**

ATGAGATCCAGTCTGGCAACATGGAGAGGATTGTCATCTGTCTGATGGTCATCTTCTTGGGGACTGG
TCCACAAATCAAGCTCCAAGGTCAAGATCGCCACATGATTAGAATGCGTCAACTATAGATATTGTTGA
TCAGCTGAAAAATTATGTGAATGACTTGGTCCCTGAATTTCTGCCAGCTCCAGAAGATGTAGAGACAAAC
TGTGAGTGGTCACTTTTCTGCTTTTCAGAAGGCCCACTAAAGTCAGCAAATACAGGAAACAATGAAA
GGATAATCAATGTATCAATTAAGCTGAAGAGGAAACCACCTCCACAAATGCAGGGAGAAGACAGAA
ACACAGACTAACATGCCCTTCATGTGATTCTTATGAGAAAAACCACCCAAAGAATTCCTAGAAAGATTC
AAATCACTTCTCCAAAAGATGATTCATCAGCATCTGTCCTCTAGAACACACGGAAGTGAAGATCC

ACGCGTACGCGGCCGCTCGAGCAGAACTCATCTCAGAAGAGGATCTGGCAGCAAATGATATCCTGGATT
ACAAGGATGACGACGATAAGGTTTAA

Protein Sequence: >RC215235 representing NM_021803
Red=Cloning site Green=Tags(s)

MRSSPGNMERIVICLMVIFLGLTVHKSSSQGDRHMIRMRLIDIVDQLKNYVNDLVPEFLPAPEDVETN
CEWSAFSCFQKAQLKSANTGNNERIINVSIIKLRKPPSTNAGRQKHLRHTCPSCDSYEKKPPKEFLERF
KSLLQKMIHQHLSRTHGSEDS

TRTRPLEQKLISEEDLAANDILDYKDDDDKV

Chromatograms: https://cdn.origene.com/chromatograms/mg2783_b01.zip



[View online >](#)

Locus ID: 59067

UniProt ID: [Q9HBE4](#)

Cytogenetics: 4q27

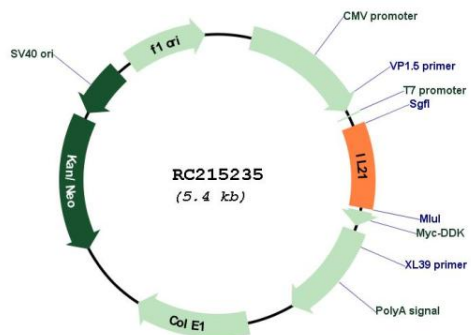
Protein Families: Druggable Genome, Secreted Protein

Protein Pathways: Cytokine-cytokine receptor interaction, Jak-STAT signaling pathway

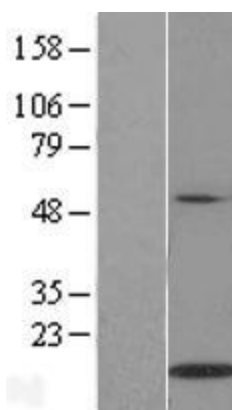
MW: 18.5 kDa

Gene Summary: This gene encodes a member of the common-gamma chain family of cytokines with immunoregulatory activity. The encoded protein plays a role in both the innate and adaptive immune responses by inducing the differentiation, proliferation and activity of multiple target cells including macrophages, natural killer cells, B cells and cytotoxic T cells. Dysregulation of this gene plays a role in multiple immune-mediated diseases including lupus, psoriasis and chronic inflammatory diseases. Alternatively spliced transcript variants encoding multiple isoforms have been observed for this gene. [provided by RefSeq, Dec 2011]

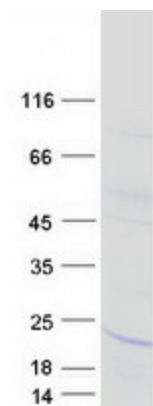
Product images:



Circular map for RC215235



Western blot validation of overexpression lysate (Cat# [LY411922]) using anti-DDK antibody (Cat# [TA50011-100]). Left: Cell lysates from untransfected HEK293T cells; Right: Cell lysates from HEK293T cells transfected with RC215235 using transfection reagent MegaTran 2.0 (Cat# [TT210002]).



Coomassie blue staining of purified IL21 protein (Cat# [TP315235]). The protein was produced from HEK293T cells transfected with IL21 cDNA clone (Cat# RC215235) using MegaTran 2.0 (Cat# [TT210002]).