

Product datasheet for RC215233

HDAC7 (NM_015401) Human Tagged ORF Clone

Product data:

Product Type:	Expression Plasmids
Product Name:	HDAC7 (NM_015401) Human Tagged ORF Clone
Tag:	Myc-DDK
Symbol:	HDAC7
Synonyms:	HD7; HD7A; HDAC7A
Mammalian Cell Selection:	Neomycin
Vector:	pCMV6-Entry (PS100001)
E. coli Selection:	Kanamycin (25 ug/mL)
ORF Nucleotide Sequence:	>RC215233 representing NM_015401 Red=Cloning site Blue=ORF Green=Tags(s)

TTTTGTAATACGACTCACTATAGGGCGGCCGGAATTCGTCGACTGGATCCGGTACCGAGGAGATCTGCC
GCC**CGATCGCC**

ATGCACAGCCCCGGCGCTGATGGGACCCAGGTGAGCCCGGGTGCCCACTACTGCAGCCCCACTGGCGCAG
GCTGCCCCAGGCCCTGTGCAGACACACCAGGCCCTCAGCCGCAGCCCATGGACCTGCGGGTGGGCCAGCG
GCCCCAGTGGAGCCCCACCAGAGCCACATTGCTGGCCCTGCAGCGTCCCCAGCGCTGCACCACCAC
CTTTCTAGCAGGCTGCAGCAGCAGCGCTCGGTGGAGCCCATGAGGCTCTCCATGGACACGCCGATGC
CCGAGTTGCAGGTGGGACCCAGGAACAAGAGCTGCGGCAGCTTCTCCACAAGGACAAGAGCAAGCGAAG
TGCTGTAGCCAGCAGCGTGGTCAAGCAGAAGCTAGCGGAGGTGATTCTGAAAAAACAGCAGCGGCCCTA
GAAAGAACAGTCCATCCCAACAGCCCCGGCATTCCCTACAGAACCCTGGAGCCCCCTGGAGACGGAAGGAG
CCACCCGCTCCATGCTCAGCAGCTTTTTGCCTCCTGTTCCAGCCTGCCAGTGACCCCCAGAGCACTT
CCCTCTGCGCAAGACAGTCTCTGAGCCCAACCTGAAGCTGCGCTATAAGCCCAAGAAGTCCCTGGAGCGG
AGGAAGAATCCACTGCTCCGAAAGGAGAGTGCGCCCCCAGCCTCCGGCGGGCGCCCGCAGAGACCCCTCG
GAGACTCCTCCCAAGTAGTAGCAGCACGCCGCATCAGGGTGCAGCTCCCCAATGACAGCGAGCACGG
CCCCAATCCATCCTGGGCTCGGAGCGCTCTTGGGCCAGCGGCTGCGGCTGCAGGAGACTTCTGTGGCC
CGTTTCGCTTGGCAGAGTGTCTTGGTGCCTGCCCCAATCACTCTGGGGCTGCCCGCCCTGCCAGGGTG
ACAGTGACCGCAGGACCCATCCGACTCTGGGCCCTCGGGGCCAATCCTGGGGAGCCCCCAGACTCCCT
CTTCTGCCCCATGGCTTGGAGCCCGAGGCTGGGGCACCTTGCCTCTCGCCTGCAGCCATTCTCCTC
CTGGACCCCTCAGGCTCTCATGCCCCGCTGCTGACTGTGCCCGGCTTGGGCCCTTGGCCTTCCACTTTG
CCCAGTCTTAATGACCACCGAGCGGCTCTCTGGGTGAGGCTCCACTGGCCACTGAGCCGGACTCGCTC
AGAGCCCCTGCCCCCAGTGCCACCGCTCCCCACCGCGGGCCCCATGCAGCCCCGCTGGAGCAGCTC
AAAACACGTCCAGGTGATCAAGAGGTGAGCCAAAGCCGAGTGAGAAGCCCCGGCTGCGGCAGATACCT
CGGCTGAAGACCTGGAGACAGATGGCGGGGACCGGGCCAGGTGGTGGACGATGGCTGGAGCACAGGGA
GCTGGGCCATGGGCAGCCTGAGGCCAGAGGCCCGCTCCTCTCCAGCAGACCCTCAGGTGTTGCTCTGG



GAACAGCAGCGACTGGCTGGGCGGCTCCCCGGGGCAGCACCGGGGACACTGTGCTGCTTCTCTGGCCC
 AGGGTGGGCACCGGCTCTGTCCCGGGCTCAGTCTTCCCAGCCGCACCTGCCTCACTGTGAGCCCCAGA
 GCCTGCCAGCCAGGCCGAGTCTCTCCAGCTCAGAGACCCCTGCCAGGACCCTGCCCTTACCACAGGG
 CTGATCTATGACTCGGTTCATGCTGAAGCACCAGTGTCTTGCCTGCAACAGCAGGCACCCGGAGCAGC
 CCGGCCGATCCAGAGCATCTGGTCCCGGCTGCAGGAGCGGGGCTCCGGAGCCAGTGTGAGTGTCTCCG
 AGGCCGGAAGGCTCCCTGGAAGAGCTGCAGTCGGTCCACTCTGAGCGGCACGTGCTCCTACGGCACC
 AACCCGCTCAGCCGCTCAAACCTGGACAACGGGAAGCTGGCAGGGCTCCTGGCACAGCGGATGTTTGTGA
 TGCTGCCCTGTGGTGGGTTGGGTGGACTGACACCATCTGGAATGAGCTTATTCTCCAATGCAGC
 CCGCTGGGCGCTGGCAGTGTCACTGACCTCGCCTTCAAAGTGGCTTCTCGTGAGCTAAAGAATGTTTC
 GCTGTGGTGGGCCCCAGGACACCATGCAGATCATTCAACAGCCATGGGCTTCTGCTTCTCAACTCAG
 TGGCCATCGCCTGCCGCGAGTGAACAGCAGAGCAAGGCCAGCAAGATCCTCATTGTAGACTGGGACGT
 GCACCATGGCAACGGCACCCAGCAAACCTTCTACCAAGACCCAGTGTGCTTACATCTCCCTGCATCGC
 CATGACGACGGCAACTTCTCCCGGGAGTGGGCTGTGGATGAGGTAGGGGCTGGCAGCGGTGAGGGCT
 TCAATGTCAATGTGGCTGGGCTGGAGGTCTGGACCCCCCATGGGGATCCTGAGTACCTGGCTGCTTT
 CAGGATAGTCGTGATGCCATCGCCGAGAGTTCTCTCCAGACCTAGTCTGGTGTCTGCTGGATTTGAT
 GCTGCTGAGGGTACCCGGCCCCACTGGTGGCTACCATGTTTCTGCCAATGTTTTGGATACATGACGC
 AGCAACTGATGAACCTGGCAGGAGGCGCAGTGGTGTGGCCTTGAGGGTGGCCATGACCTCACAGCCAT
 CTGTGACGCTCTGAGGCTGTGTGGTCTTCTGGTAACAGGGTGGATCCCCTTTCAGAAGAAGGC
 TGGAAACAGAAACCAACCTCAATGCCATCCGCTCTCTGGAGGCCGTGATCCGGGTGCACAGTAAACT
 GGGGCTGCATGCAGCGCTGGCCTCCTGTCCAGACTCTGGGTGCCTAGAGTGCCAGGGGCTGACAAAGA
 AGAAGTGGAGGCACTGACCGCACTGGCCTCCCTCTGTGGGCATCCTGGCTGAAGATAGGCCCTCGGAG
 CAGCTGGTGGAGGAGGAAGAACCTATGAATCTC

ACGCGTACGCGGCGCTCGAGCAGAACTCATCTCAGAAGAGGATCTGGCAGCAAATGATATCCTGGATT
 ACAAGGATGACGACGAT AAGTTTAA

Protein Sequence:

>RC215233 representing NM_015401
 Red=Cloning site Green=Tags(s)

MHSPGADGTQVSPGAHYCSPTGAGCPRPCADTPGPQPQMDLRVGRPPVEPPPEPTLLALQRPQRLLHHH
 LFLAGLQQRSVEPMRLSMDTPMPELQVGPQEQLRQLLHKDKSKRSVASSVVKQLAEVILKKQQAAL
 ERTVHPNSPGIPYRTLEPLETEGATRSMLSSFLPPVPSLPSDPPPEHPLRKTVSEPNLKLRYKPKSLER
 RKNPLLRKESAPPSLRRRPAETLGDSSPSSSTPASGSSPNDSEHGPNPILGSEALLGQRLRLQETSVA
 PFALPTVSLLPAILGLPAPARADSDRRHTPLGPRGPILGSPHTPLFLPHGLEPEAGGTLPSRLQPILL
 LDPSGSHAPLLTVPGLGPLPFHFAQSLMTTERLSGSLHWPLSRTRSEPLPPSATAPPPGPMQPRLEQL
 KTHVQVIKRSAPSEKPRLRQIPSAEDLETGGGPGQVVDGLEHRELGHGQPEARGPAPLQHPQVLLW
 EQQLRAGRLPRGSTGDTVLLPLAQGGHRPLSRAQSSPAAPASLSAPEPASQARVLSSETPARTLPFTTG
 LIYDSVMLKHQCSGDNRRHPEHAGRIQSIWSRLQERGLRSQCECLRGRKASLEELQSVHSEHVLLYGT
 NPLSRLKLDNGKLAGLLAQRMFVMLPCGGVGVDTDTIWNELHSSNAARWAAGSVTDLAFKVASRELKNGF
 AVVRPPGHADHSTAMGFCFFNSVAIACRQLQQQSKASKILIVDWDVHHGNGTQQTFYQDPSVLYISLHR
 HDDGNFFPGSAGVDEVGAGSGEGFNVNVAWAGGLDPPMGDPEYLAAFRIVVMPIAREFSPDLVLSAGFD
 AAEGHPAPLGGYHVSACFGYMTQQLMNLAGGAVVLALEGGHDLTAICDASEACVAALLGNRVDPLSEEG
 WKQKPNLNAIRSLEAIVRVHSHKYWGCMQRLASCPDSWVPRVPGADKEEVEAVTALASLSVGILAEADRPSE
 QLVVEEPPMNL

TRTRPLEQKLISEEDLAANDILDYKDDDDKV

Restriction Sites:

Sgfl-MluI

Cloning Scheme:


ACCN: NM_015401

ORF Size: 2973 bp

OTI Disclaimer: Due to the inherent nature of this plasmid, standard methods to replicate additional amounts of DNA in E. coli are highly likely to result in mutations and/or rearrangements. Therefore, OriGene does not guarantee the capability to replicate this plasmid DNA. Additional amounts of DNA can be purchased from OriGene with batch-specific, full-sequence verification at a reduced cost. Please contact our customer care team at custsupport@origene.com or by calling 301.340.3188 option 3 for pricing and delivery.

The molecular sequence of this clone aligns with the gene accession number as a point of reference only. However, individual transcript sequences of the same gene can differ through naturally occurring variations (e.g. polymorphisms), each with its own valid existence. This clone is substantially in agreement with the reference, but a complete review of all prevailing variants is recommended prior to use. [More info](#)

OTI Annotation: This clone was engineered to express the complete ORF with an expression tag. Expression varies depending on the nature of the gene.

Components: The ORF clone is ion-exchange column purified and shipped in a 2D barcoded Matrix tube containing 10ug of transfection-ready, dried plasmid DNA (reconstitute with 100 ul of water).

Reconstitution Method:

1. Centrifuge at 5,000xg for 5min.
2. Carefully open the tube and add 100ul of sterile water to dissolve the DNA.
3. Close the tube and incubate for 10 minutes at room temperature.
4. Briefly vortex the tube and then do a quick spin (less than 5000xg) to concentrate the liquid at the bottom.
5. Store the suspended plasmid at -20°C. The DNA is stable for at least one year from date of shipping when stored at -20°C.

RefSeq: [NM_015401.5](#)

RefSeq Size: 4301 bp

RefSeq ORF: 2976 bp

Locus ID: 51564

UniProt ID: [Q8WU14](#)

Cytogenetics: 12q13.11

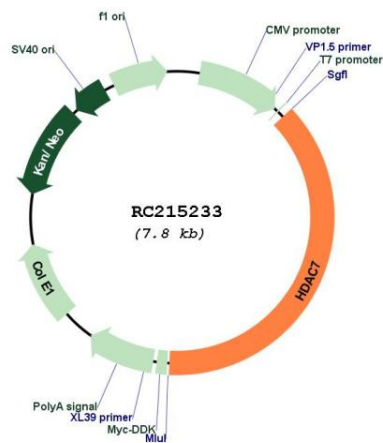
Domains: Hist_deacetyl

Protein Families: Druggable Genome, Transcription Factors

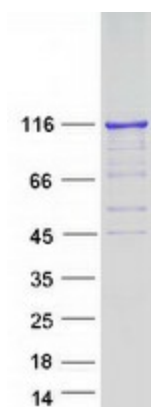
MW: 106.6 kDa

Gene Summary: Histones play a critical role in transcriptional regulation, cell cycle progression, and developmental events. Histone acetylation/deacetylation alters chromosome structure and affects transcription factor access to DNA. The protein encoded by this gene has sequence homology to members of the histone deacetylase family. This gene is orthologous to mouse HDAC7 gene whose protein promotes repression mediated via the transcriptional corepressor SMRT. Alternatively spliced transcript variants encoding different isoforms have been found for this gene. [provided by RefSeq, Jul 2008]

Product images:



Circular map for RC215233



Coomassie blue staining of purified HDAC7 protein (Cat# [TP315233]). The protein was produced from HEK293T cells transfected with HDAC7 cDNA clone (Cat# RC215233) using MegaTran 2.0 (Cat# [TT210002]).