

Product datasheet for **RC215232**

Relaxin 3 receptor 1 (RXFP3) (NM_016568) Human Tagged ORF Clone

Product data:

Product Type:	Expression Plasmids
Product Name:	Relaxin 3 receptor 1 (RXFP3) (NM_016568) Human Tagged ORF Clone
Tag:	Myc-DDK
Symbol:	Relaxin 3 receptor 1
Synonyms:	GPCR135; RLN3R1; RXFP3; SALPR
Mammalian Cell Selection:	Neomycin
Vector:	pCMV6-Entry (PS100001)
E. coli Selection:	Kanamycin (25 ug/mL)



[View online »](#)

ORF Nucleotide Sequence:

>RC215232 representing NM_016568
 Red=Cloning site Blue=ORF Green=Tags(s)

TTTTGTAATACGACTCACTATAGGGCGGCCGGGAATTCGTCGACTGGATCCGGTACCGAGGAGATCTGCC
 GCC**GCGATCGCC**

ATGCAGATGGCCGATGCAGCCACGATAGCCACCATGAATAAGGCAGCAGGCGGGGACAAGCTAGCAGAAC
 TCTTCAGTCTGGTCCCGACCTTCTGGAGGCGGCCAACACGAGTGGTAACGCGTCGCTGCAGCTTCCGGA
 CTTGTGGTGGGAGCTGGGGCTGGAGTTGCCGGACGGCGCCGCCAGGACATCCCCGGGACGGCGGG
 GCAGAGAGCGGGACACAGAGGCCCGGGTGCAGTTCTCATCAGCGTGGTGTACTGGGTGGTGTGCGCCC
 TGGGGTTGGCGGCAACCTGCTGGTTCTCTACCTGATGAAGAGCATGCAGGGCTGGCGCAAGTCTCTAT
 CAACCTCTTCGTACCAACCTGGCGTACGGACTTTCAGTTTGTCTCACCTGCCCTTCTGGCGGTG
 GAGAACGCTCTTGACTTCAAATGGCCCTTCGGCAAGGCCATGTGAAGATCGTGTCCATGGTGACGTCCA
 TGAACATGTACGCCAGCGTGTCTTCTCACTGCCATGAGTGTGACGCGCTACCATTCCGGTGGCCTCGGC
 TCTGAAGAGCCACCGACCCGAGGACACGGCCGGGGCGACTGCTGCGGCCGGAGCCTGGGGACAGCTGC
 TGCTTCTCGGCCAAGGCGCTGTGTGTGGATCTGGGCTTTGGCCGCGCTGGCCTCGCTGCCAGTGCCA
 TTTTCTCCACCACGGTCAAGGTGATGGGCGAGGAGCTGTGCCTGGTGCCTTCCCGGACAAGTTGCTGGG
 CCGCGACAGGCAGTTCTGGCTGGGCTCTACCACTCGCAGAAGGTGCTGTTGGGCTTCGTGCTGCCGCTG
 GGCATCATTATCTTGTGTACTCTGCTGCTGGTGCCTTCATCGCCGACCGCCGCGCGGGGACCAAAAG
 GAGGGGCCCGGTAGCCGGAGGACGCCGACCGGAGCCAGCGCCCGGAGACTGTGCAAGGTACCAAATC
 AGTGACCATCGTGTCTGTCTTCTTCTGTGTGGTGCCTCAACCCCGTCTCTACTGCCTCGTGCAGTTCGG
 CCGTGTGCCTAGCGCACTCCAACAGCTGCCTCAACCCCGTCTCTACTGCCTCGTGCAGTTCGGTCCG
 CAAGGCGCTCAAGAGCCTGCTGTGGCGCATCGCTCTCTTCGATCACCAGCATGCGCCCTTACCGCC
 ACTACCAAGCCGAGCACGAGGATCAGGGGCTGCAGGCCCGGCCGCCCCACGCGCCCGGAGCCGG
 ACCTGCTCTACTACCACTGGCGTGTGGTCTACAGCGGGGGCGCTACGACCTGCTGCCAGCAGCTC
 TGCTAC

AG**GCGACCG**ACGCGTACGCGGCCGCTCGAGCAGAACTCATCTCAGAAGAGGATCTGGCAGCAAATGATATCC
 TGGATTACAAGGATGACGACGATAAGGTTTAA

Protein Sequence:

>RC215232 representing NM_016568
 Red=Cloning site Green=Tags(s)

MQMADAATIATMKAAGGDKLAELFSLVPDLLEAANTSGNASLQLPDLWWELGLELPDGAPPHPGPPGSGG
 AESADTEARVRILISVVYVVVLCALGLAGNLLVLYMKSMQGWKSSINLFTNLALTFDFQFVLTLPFWAV
 ENALDFKWPFGKAMCKIVSMVTSNMNYASVFFLTAMSVTRYHSVASALKSHRTRGHGRGDCCGRSLGDCS
 CFSAKALCVWIWALAALASLPSAIFSTTVKVMGEELCLVRFDPKLLGRDRQFWLGLYHSQVLLGFVPL
 GIIILCYLLLVRFIADRRRAAGTKGGAAVAGGRPTGASARRLSKVTKSVTVVLSFFLCWLPNQALTTWSI
 LIKFNAVFPFSQEYFLCQVYAFPVSVCLAHSNSCLNPVLYLVRREFRKALKSLLWRIASPISITSMRPFTA
 TTKPEHEDQQLQAPAPPHAAAEPDLLYPPGVVVYSGGRYDLLPSSSAY

SGPTRRRLEQKLISEEDLAANDILDYKDDDDKV

Chromatograms:

https://cdn.origene.com/chromatograms/mk6187_d05.zip

Restriction Sites:

Sgfl-RsrII

Cloning Scheme:


ACCN: NM_016568

ORF Size: 1407 bp

OTI Disclaimer: Due to the inherent nature of this plasmid, standard methods to replicate additional amounts of DNA in E. coli are highly likely to result in mutations and/or rearrangements. Therefore, OriGene does not guarantee the capability to replicate this plasmid DNA. Additional amounts of DNA can be purchased from OriGene with batch-specific, full-sequence verification at a reduced cost. Please contact our customer care team at custsupport@origene.com or by calling 301.340.3188 option 3 for pricing and delivery.

The molecular sequence of this clone aligns with the gene accession number as a point of reference only. However, individual transcript sequences of the same gene can differ through naturally occurring variations (e.g. polymorphisms), each with its own valid existence. This clone is substantially in agreement with the reference, but a complete review of all prevailing variants is recommended prior to use. [More info](#)

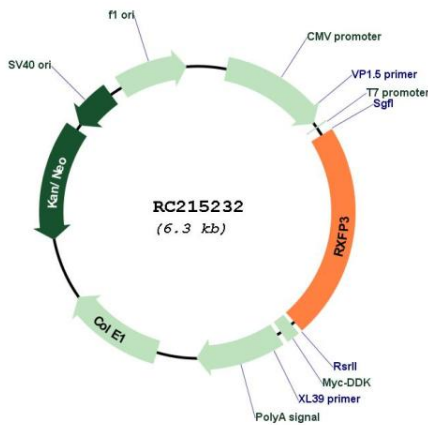
OTI Annotation: This clone was engineered to express the complete ORF with an expression tag. Expression varies depending on the nature of the gene.

Components: The ORF clone is ion-exchange column purified and shipped in a 2D barcoded Matrix tube containing 10ug of transfection-ready, dried plasmid DNA (reconstitute with 100 ul of water).

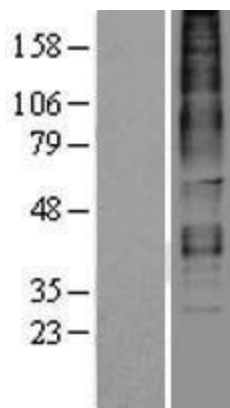
- Reconstitution Method:**
1. Centrifuge at 5,000xg for 5min.
 2. Carefully open the tube and add 100ul of sterile water to dissolve the DNA.
 3. Close the tube and incubate for 10 minutes at room temperature.
 4. Briefly vortex the tube and then do a quick spin (less than 5000xg) to concentrate the liquid at the bottom.
 5. Store the suspended plasmid at -20°C. The DNA is stable for at least one year from date of shipping when stored at -20°C.

RefSeq: [NM_016568.2](#)
RefSeq Size: 1857 bp
RefSeq ORF: 1410 bp
Locus ID: 51289
UniProt ID: [Q9NSD7](#)
Cytogenetics: 5p13.2
Protein Families: Druggable Genome, GPCR, Transmembrane
MW: 50.9 kDa
Gene Summary: Receptor for RNL3/relaxin-3. Binding of the ligand inhibit cAMP accumulation. [UniProtKB/Swiss-Prot Function]

Product images:



Circular map for RC215232



Western blot validation of overexpression lysate (Cat# [LY402566]) using anti-DDK antibody (Cat# [TA50011-100]). Left: Cell lysates from untransfected HEK293T cells; Right: Cell lysates from HEK293T cells transfected with RC215232 using transfection reagent MegaTran 2.0 (Cat# [TT210002]).