

Product datasheet for **RC215230**

CD239 (BCAM) (NM_001013257) Human Tagged ORF Clone

Product data:

Product Type:	Expression Plasmids
Product Name:	CD239 (BCAM) (NM_001013257) Human Tagged ORF Clone
Tag:	Myc-DDK
Symbol:	CD239
Synonyms:	AU; CD239; LU; MSK19
Mammalian Cell Selection:	Neomycin
Vector:	pCMV6-Entry (PS100001)
E. coli Selection:	Kanamycin (25 ug/mL)



[View online »](#)

ORF Nucleotide Sequence:

>RC215230 representing NM_001013257
 Red=Cloning site Blue=ORF Green=Tags(s)

TTTTGTAATACGACTCACTATAGGGCGGCCGGGAATTCGTCGACTGGATCCGGTACCGAGGAGATCTGCC
 GCC**CGGATCGCC**

ATGGAGCCCCCGACGCACCGGCCAGGCGCGGGGCCCGCGGCTGCTGTTGCTCGCAGTCTGTGG
 CGGCGCACCCAGATGCCAGGCGAGGTGCGCTTGTGTACCCCGCTGGTGGAGGTGATGCGAGGAAA
 GTCTGTCAATTCTGGACTGCACCCCTACGGGAACCCACGACCATTATATGCTGGAATGGTTCTTACCGAC
 CGCTCGGGAGCTCGCCCCGCTAGCCTCGGCTGAGATGCAGGGCTCTGAGCTCCAGGTCACAATGCACG
 ACACCCGGGGCCGAGTCCCCATACCAGCTGGACTCCAGGGCGCCTGGTGTGGCTGAGGCCAGGT
 GGGCGACGAGCGAGACTACGTGTGCGTGGTGGGGCAGGGCGGCAGGCACTGCTGAGGCCACTGCGCGG
 CTAACGTGTTTGCAAAGCCAGAGGCCACTGAGGTCTCCCCAACAAAGGGACACTGTCTGTGATGGAGG
 ACTCTGCCAGGAGATCGCCACCTGCAACAGCCGGAACGGGAACCCGGCCCCAAGATCACGTGGTATCG
 CAACGGCAGCGCTGGAGGTGCCGTAGAGATGAACCCAGAGGGCTACATGACCAGCCGACGGTCCGG
 GAGGCCTCGGGCCTGCTCCTCACCAGCACCTCTACCTGCGGCTCCGCAAGGATGACCGAGACGCCA
 GCTTCCACTGCGCCGCCACTACAGCTGCCAGGGGCCACGCGCCTGGACAGCCCCACCTTCCA
 CCTCACCTGCACTATCCACGGAGCACGTGCAGTTCTGGGTGGGAGCCGTCACCCAGCAGGCTGG
 GTACGCGAGGGTGACACTGTCCAGCTGCTGCGGGGGGACGGCAGCCCCAGCCGGAGTATACGCTTT
 TCCGCCTCAGGATGAGCAGGAGGAAGTCTGAATGTGAATCTCGAGGGAACTTACCCCTGGAGGGAGT
 GACCCGGGGCCAGAGCGGACCTATGGCTGCAGAGTGGAGGATTACGACGCGGCAGATGACGTGCAGCTC
 TCCAAGACGCTGGAGCTGCGCGTGGCCTATCTGGACCCCTGGAGCTCAGCGAGGGGAAGGTGCTTTCCT
 TACCTCTAAACAGCAGTGCAGTCTGAAGTCTCCGTGCACGGCCTGCCACCCCTGCCCTACGCTGGAC
 CAAGGACTCCACTCCCCTGGGCGATGGCCCATGCTGTCGCTCAGTTCTATCACCTTCGATTCCAATGGC
 ACCTACGTATGTGAGGCCTCCCTGCCACAGTCCCGTCTCAGCCGACCCAGAACTTACGCTGCTGG
 TCCAAGGCTCGCCAGAGCTAAAGACAGCGGAAATAGAGCCCAAGGCAGATGGCAGCTGGAGGGAAGGAGA
 CGAAGTCACTCATCTGCTCTGCCCGCGGCCATCCAGACCCAAACTCAGCTGGAGCCAATTGGGGGGC
 AGCCCCGAGAGCCAATCCCGGACGGCAGGGTGGGTGAGCAGCTCTGACCCGAAAGTGACCAGCG
 CCCTGAGCCGATGGCATCTCCTGTGAAGCCTCAACCCACGGGAACAAGCGCCATGTCTTCCACTT
 CGGCACCGTGAAGCCCCAGACCTCCAGGCTGGAGTGGCCGTATGGCCGTGGCCGTGAGCGTGGCCCTC
 CTGCTCCTCGTGTGCTTCTACTGCGTGAAGCGAAAGGGGGCCCTGCTGCCGCCAGCGGGGG
 AGAAGGGGGCTCCG

ACGCGTACGCGGGCCGCTCGAGCAGAAACTCATCTCAGAAGAGGATCTGGCAGCAAATGATATCCTGGATT
 ACAAGGATGACGACGATAAGGTTTAA

Protein Sequence:

>RC215230 representing NM_001013257
 Red=Cloning site Green=Tags(s)

MEPPDAPAQARGAPRLLLLAVLLAAHPDAQAEVRLSVPPLVEVMRGKSVILDCTPTGTHDHMLEWFLTD
 RSGARPRLASAEMQGSSELQVTMHDTRGRSPPYQLDSQGRVLAEAVQVGDERTDYVVRAGAAGTAEATAR
 LNVFAKPEATEVSPNKGTL SVMEDSAQEIATCNSRNGNPAPKITWYRNGQRLEVPVEMNPEGYMTSRTVR
 EASGLLSLTSTLYLRLRKDDRDASFHCAAHYSLPEGRHGRLDSPTFHLTLHYPTHEHVQFWGSPSTPAGW
 VREGDTVQLLCRGGSPSPEYTLFRLQDEQEEVLNVNLEGNLTLEGVTRGQSGTYGCRVEDYDAADDVQL
 SKTLELRVAYLDPLELSEGKVLSLPLNSSAVVNCVHGLPTPALRWTKSTPLGDGPMPLSLSSITFDNSG
 TYVCEASLPTVPVLSRTQNFLLVQGSPELKTAIEIPKADGWSWREGDEVTLICSRGHDPKLSWSQLGG
 SPAEPIPRQGWVSSSLTKVTSALSRDGISCEASNPHGNKRHFHFGTVSPQTSQAGVAVMAVAVSVGL
 LLLVVAVFYCVRKGGPCCRQRREKGP

TRTRPLEQKLISEEDLAANDILDYKDDDDKV

Chromatograms:

https://cdn.origene.com/chromatograms/mk8068_f05.zip

Restriction Sites: SgfI-MluI

Cloning Scheme:



ACCN: NM_001013257

ORF Size: 1764 bp

OTI Disclaimer: The molecular sequence of this clone aligns with the gene accession number as a point of reference only. However, individual transcript sequences of the same gene can differ through naturally occurring variations (e.g. polymorphisms), each with its own valid existence. This clone is substantially in agreement with the reference, but a complete review of all prevailing variants is recommended prior to use. [More info](#)

OTI Annotation: This clone was engineered to express the complete ORF with an expression tag. Expression varies depending on the nature of the gene.

Components: The ORF clone is ion-exchange column purified and shipped in a 2D barcoded Matrix tube containing 10ug of transfection-ready, dried plasmid DNA (reconstitute with 100 ul of water).

Reconstitution Method:

1. Centrifuge at 5,000xg for 5min.
2. Carefully open the tube and add 100ul of sterile water to dissolve the DNA.
3. Close the tube and incubate for 10 minutes at room temperature.
4. Briefly vortex the tube and then do a quick spin (less than 5000xg) to concentrate the liquid at the bottom.
5. Store the suspended plasmid at -20°C. The DNA is stable for at least one year from date of shipping when stored at -20°C.

RefSeq: [NM_001013257.2](#)

RefSeq Size: 2434 bp

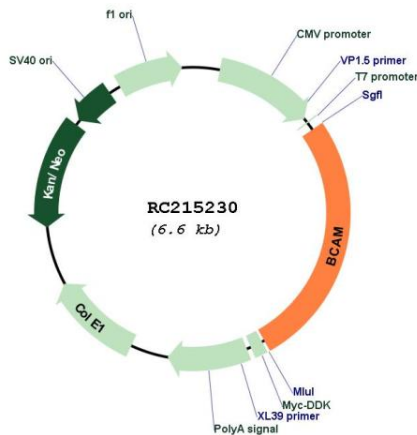
RefSeq ORF: 1767 bp

Locus ID: 4059

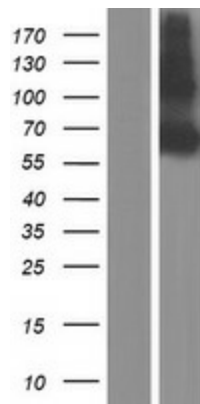
UniProt ID: [P50895](#)
Cytogenetics: 19q13.32
Protein Families: Druggable Genome, Transmembrane
MW: 63.69 kDa

Gene Summary: This gene encodes Lutheran blood group glycoprotein, a member of the immunoglobulin superfamily and a receptor for the extracellular matrix protein, laminin. The protein contains five extracellular immunoglobulin domains, a single transmembrane domain, and a short C-terminal cytoplasmic tail. This protein may play a role in epithelial cell cancer and in vaso-occlusion of red blood cells in sickle cell disease. Polymorphisms in this gene define some of the antigens in the Lutheran system and also the Auberger system. Inactivating variants of this gene result in the recessive Lutheran null phenotype, Lu(a-b-), of the Lutheran blood group. Two transcript variants encoding different isoforms have been found for this gene. [provided by RefSeq, May 2012]

Product images:



Circular map for RC215230



Western blot validation of overexpression lysate (Cat# [LY422959]) using anti-DDK antibody (Cat# [TA50011-100]). Left: Cell lysates from untransfected HEK293T cells; Right: Cell lysates from HEK293T cells transfected with RC215230 using transfection reagent MegaTran 2.0 (Cat# [TT210002]).