

Product datasheet for **RC215217**

VILL (NM_015873) Human Tagged ORF Clone

Product data:

Product Type:	Expression Plasmids
Product Name:	VILL (NM_015873) Human Tagged ORF Clone
Tag:	Myc-DDK
Symbol:	VILL
Mammalian Cell Selection:	Neomycin
Vector:	pCMV6-Entry (PS100001)
E. coli Selection:	Kanamycin (25 ug/mL)



[View online »](#)

ORF Nucleotide Sequence:

>RC215217 representing NM_015873
 Red=Cloning site Blue=ORF Green=Tags(s)

TTTTGTAATACGACTCACTATAGGGCGGCCGGAATTCGTCGACTGGATCCGGTACCGAGGAGATCTGCC
 GCC**CGGATCGCC**

ATGGACATCAGCAAGGGCTCCAGGCATGCAGGGAGGCCTCCACATATGGATCTCTGAGAACC^{GAAGA}
 TGGTGCCGGTACCCGAGGGGCTTACGGGAAC^{TTTTTTGAGGA}ACTGCTATGTCATCCTCCACGTCCC
 CCAGAGCCCAAGGCCACGCAGGGGGCTCCAGCGACCTGCACTACTGGGTCGGGAAGCAGGCGGGTGC
 GAAGCGCAGGGCGCTGCGGAGGCCTTCCAGCAGCGCTACAGGACGAGCTGGGGGCCAGACCGTGTCTGC
 ACCGCGAGGGCGCAGGGCCACGAGTCCGACTGCTTCTGCAGCTACTCCGCCCGGAATCATCTACAGGAA
 GGGAGGCCTAGCATCTGACCTCAAGCATGTGGAGACCACTTGTCAACATCCAGCGACTGCTGCACATC
 AAAGGGAGGAAGCACGTGTCTGCCACTGAGGTGGAGCTCTCTGGAACAGCTTTAATAAGGGTGACATCT
 TCCTGCTGGACCTAGGCAAGATGATGATTCAAGTGAATGGGCCAAGACCAGCATTTCTGAGAAGGCTCG
 GGGGCTGGCTTTGACCTACAGCCTCCGGGACAGGGAACGTGGTGGTGGTGTGCACAGATTGGTGTGGT
 GATGATGAGGCCAAAGCCCCGGACTCATGCAGATCATGGAGGCTGTGCTGGGCCGAGGGTGGGCAGCC
 TGCCTGCCGCCACGCCAGCAAGGATATCAACCAGCTGCAGAAGGCCAATGTTCCGCTGTACCATGTCTA
 TGAGAAGGGCAAAGACCTGGTGGTCTGGAGTTGGCGACCCCCCACTGACCCAGGACCTGCTGCAGGAG
 GAGGACTTCTACATCCTGGACCAGGGTGGCTTCAAGATCTATGTGTGGCAGGGACGCATGTCTAGCCTCC
 AGGAGAGAAAGGCTGCCTTACGCCGGGCTGTGGGCTTCAAGGCAAGGGCTACCCGACCTACACCAA
 CGTGGAGGTGGTGAACGACGGCGCCGAGTCGGCCCGTCAAGCAGCTCTCCGGACTGGTCTGAGAAG
 CGGCGCAGGAACCAGAAGCTCGGGGGAGGGATAAATCGATTATGTAAGCTGGACGTGGGCAAGCTGC
 ACACCCAGCCTAAGTTAGCGGCCAGCTCAGGATGGTGGACAGCGCTCTGGGAAGTGGAGGTGGTGGT
 CATCCAGGACTTACACAGGCAGCCCGTGGACCCCAAGCGTCATGGACAGCTGTGTGACAGGCAACTGCTAC
 CTTGTGCTCTACACATACCAGAGGCTGGGCCGTGCCAGTACATCCTGTACCTATGGCAGGGCCACCAGG
 CCACTGCGGATGAGATTGAGGCCCTGAACAGCAACGCTGAGGAACTAGATGTCATGTATGGTGGCGTCTCT
 AGTACAGGAGCATGTGACCATGGGCAGCGAGCCCCCACTTCTCGCCATCTTCCAGGGCCAGCTGGT
 ATCTTCCAGGAGAGACTGGGCACCATGGAAGGGGCGAGTCAGCATCCACCACAAGGCTTTTCCAAGTGC
 AAGGCACTGACAGCCACAACACCAGGACCATGGAGGTGCCAGCCCGTGCCTCATCCCTCACTCCAGTGA
 CATCTTCTTGTGTCACAGCCAGCGTCTGCTACCTCTGGTTGGGAAGGGCTGTAATGGTATCAGCGT
 GAGATGGCACGGGTGGTGGTCACTGTCAATTTCCAGGAAGATGAGGAAACGGTGTGGAGGGTCAAGGAGC
 CTCCCCACTTCTGGGAGGCCCTGGGAGGCCGGGCCCTACCCAGCAACAAGAGGCTCCCTGAGGAGGT
 CCCCAGCTTCCAGCCACGACTGTTTGTGCTCCAGCCACATGGGCTGCCTGGTCCCTCGCAGAAGTGGGG
 TTCTTCCAGCCAGGAGGACCTGGACAAGTATGACATCATGTTACTGGACACCTGGCAGGAGATCTTCTGT
 GGCTTGGGGAAGCTGCAAGTGAAGTGAAGGAGGGCGGTGGCCTGGGGCCAGGAGTACCTGAAGACTCACCC
 AGCAGGGAGGAGCCCGGCCACACCCATCGTGTGGTCAAGCAGGGCCATGAGCCTCCACCTTATTGGA
 TGGTCTTCACTTGGGACCCCTACAAGTGGACTAGCCACCCGTCACCAAGGAAGTGGTGGATGGCAGCC
 CGGCAGCAGCATCAACATCTCTGAGATAACAGCAGAAGTCAACAACCTTCCGGCTATCCAGATGGCCGGG
 CAATGGCAGGGCAGGTGCCGTGGCCCTGCAGGCCCTCAAGGGCTCCAGGACAGCTCAGAGAATGATCTG
 GTGCGAAGCCCCAAGTCGGCTGGCAGCAGAACCAGCAGCTCCGTACGACAGCACCAGCGCCAGCATCAACG
 GGGCCTGCGCCGGAACTGATGCACCAGGCTGTTGAGGACCTGCCAGAGGGCGTGGACCCTGCCCG
 CAGGGAGTTCTATCTCTCAGACTCTGACTTCCAAGATATCTTTGGGAAATCCAAGGAGGAATTCTACAG
 ATGGCCACGTGGAGGCAGCGGCAGGAGAAAAAGCAGCTGGGCTTCTTC

ACCGGTACGCGGCCGCTCGAGCAGAACTCATCTCAGAAGAGGATCTGGCAGCAATGATATCCTGGATT
 ACAAGGATGACGACGATAAGGTTTAA

Protein Sequence: >RC215217 representing NM_015873
Red=Cloning site Green=Tags(s)

MDISKGLPGMQGGLHIWISENRKMVPVPEGAYGNFFEEHCYVILHVPQSPKATQGASSDLHYWVGKQAGA
EAQGAAEAFQRLQDELGGQTVLHREAQGHESDCFCSYFRPGIIRKGGGLASDLKHVETNLFNIQRLLHI
KGRKHVSATEVELSWNSFNKGDIFLLDLGKMMIQWNGPKTISEKARGLALTYSLRDRERGGGRAQIGVV
DDEAKAPDLMQIMEAVLGRRVGSLSRAATPSKDIQLQKANVRLYHVYKGGKDLVLELATPPLTQDLLQE
EDFYILDQGGFKIYVWQGRMSSLQERKAAFRAVGFIAKGYPTYTNVEVVNDGAESAFAFKQLFRTWSEK
RRRNQKLGGRDKSIHVKLDVGLHTQPKLAAQLRMVDDGSGKVEVWCIQDLHRQPVPDKRHGQLCAGNCY
LVLYTYQRLGRVQYILYLWQGHQATADEIEALNSNAEELDVMYGGVLVQEHVTMGSEPPHFLAIFQGQLV
IFQERAGHHGKQSASTTRLFQVQGTDSHNTRTMEVPARASSLNSSDIFLLVTASVCYLWFGKGCNGDQR
EMARVVVTVISRKNEETVLEGQEPHFWEALGGRAPYPSNKRLPEEVPSFQPRLFECSSHMGLVLAEVG
FFSQEDLDKYDIMLLDTWQEIFLWLGEASEWKEAVAWGQEYLKTHPAGRSPATPIVLVKQGHPPPTFIG
WFFTWDPYKWTSHPSHKEVVDGSPAAASTISEITAEVNNLRLSRWPGNGRAGAVALQALKGSQDSSENDL
VRSPKSAGSRTSSVSSTSATINGGLRREQLMHQAVEDLPEGVDPARREFYLSDSDFQDIFGKSKEEFYS
MATWRQRQEKKQLGFF

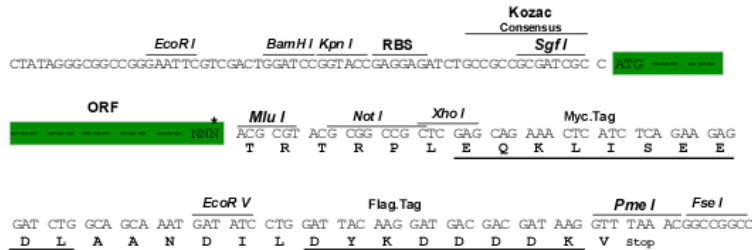
TRTRPLEQKLISEEDLAANDILDYKDDDDKV

Chromatograms: https://cdn.origene.com/chromatograms/mk8027_b04.zip

Restriction Sites: SgfI-MluI

Cloning Scheme:

Cloning sites used for ORF Shuttling:



* The last codon before the Stop codon of the ORF

ACCN: NM_015873

ORF Size: 2568 bp

OTI Disclaimer: The molecular sequence of this clone aligns with the gene accession number as a point of reference only. However, individual transcript sequences of the same gene can differ through naturally occurring variations (e.g. polymorphisms), each with its own valid existence. This clone is substantially in agreement with the reference, but a complete review of all prevailing variants is recommended prior to use. [More info](#)

OTI Annotation: This clone was engineered to express the complete ORF with an expression tag. Expression varies depending on the nature of the gene.

Components: The ORF clone is ion-exchange column purified and shipped in a 2D barcoded Matrix tube containing 10ug of transfection-ready, dried plasmid DNA (reconstitute with 100 ul of water).

Reconstitution Method:

1. Centrifuge at 5,000xg for 5min.
2. Carefully open the tube and add 100ul of sterile water to dissolve the DNA.
3. Close the tube and incubate for 10 minutes at room temperature.
4. Briefly vortex the tube and then do a quick spin (less than 5000xg) to concentrate the liquid at the bottom.
5. Store the suspended plasmid at -20°C. The DNA is stable for at least one year from date of shipping when stored at -20°C.

RefSeq: [NM_015873.3](#), [NP_056957.3](#)

RefSeq Size: 2787 bp

RefSeq ORF: 2571 bp

Locus ID: 50853

UniProt ID: [O15195](#)

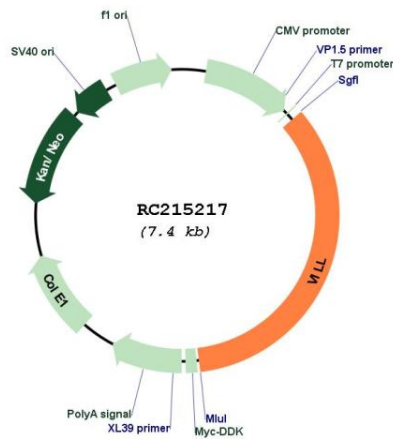
Cytogenetics: 3p22.2

Domains: VHP, GEL, Gelsolin

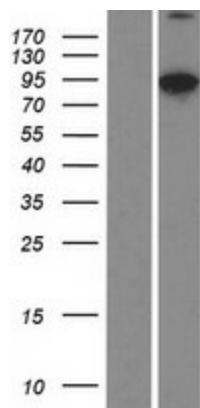
MW: 95.7 kDa

Gene Summary: The protein encoded by this gene belongs to the villin/gelsolin family. It contains 6 gelsolin-like repeats and a headpiece domain. It may play a role in actin-bundling. [provided by RefSeq, Jul 2008]

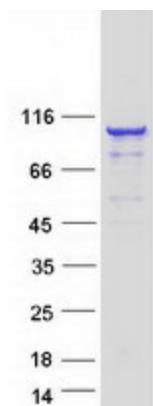
Product images:



Circular map for RC215217



Western blot validation of overexpression lysate (Cat# [LY414343]) using anti-DDK antibody (Cat# [TA50011-100]). Left: Cell lysates from untransfected HEK293T cells; Right: Cell lysates from HEK293T cells transfected with RC215217 using transfection reagent MegaTran 2.0 (Cat# [TT210002]).



Coomassie blue staining of purified VILL protein (Cat# [TP315217]). The protein was produced from HEK293T cells transfected with VILL cDNA clone (Cat# RC215217) using MegaTran 2.0 (Cat# [TT210002]).