

Product datasheet for RC215213

Bcl G (BCL2L14) (NM_138723) Human Tagged ORF Clone

Product data:

Product Type:	Expression Plasmids
Product Name:	Bcl G (BCL2L14) (NM_138723) Human Tagged ORF Clone
Tag:	Myc-DDK
Symbol:	Bcl G
Synonyms:	BCLG
Mammalian Cell Selection:	Neomycin
Vector:	pCMV6-Entry (PS100001)
E. coli Selection:	Kanamycin (25 ug/mL)
ORF Nucleotide Sequence:	>RC215213 ORF sequence Red=Cloning site Blue=ORF Green=Tags(s)

TTTTGTAATACGACTCACTATAGGGCGGCCGGAATTCGTCGACTGGATCCGGTACCGAGGAGATCTGCC
GCC**CGATCGCC**

ATGTGTAGCACCAGTGGGTGTGACCTGGAAGAAATCCCCCTAGATGATGATGACCTAAACACCATAGAAT
TCAAAATCCTCGCTACTACACCAGACATCATGTCTTCAAGAGCACCCCTGCTCTTCTCACCAAAGCT
GCTGAGAACAGAAGTTTGTCCCAGAGGGGCTGGGAATTGTTTCAGCAAATGAGTCATGGACAGAGGTG
TCATGGCCTTGCAGAAATCCCAATCCAGTGAGAAGGCCATAAACCTTGGCAAGAAAAAGTCTTCTTGA
AAGCATTCTTTGGAGTAGTGGAGAAGGAAGATTTCGAGAGCACGCCTGCCAAGGTCTCTGCTCAGGGTCA
AAGGACGTTGGAATACCAAGATTCGCACAGCCAGCAGTGGTCCAGGTGTCTTTCTAACCTGGAGCAGTGC
TTGGAGCATGAAGCTGTGGACCCCAAAGTCATTTCCATTGCCAACCGAGTAGCTGAAATTGTTTACTCCT
GGCCACCACCACAAGCGACCCAGGCAGGAGGCTTCAAGTCCAAAGAGATTTTTGTAAGTGAAGGTTCTCTC
CTTCCAGCTCCAAGGCCACGTGCCTGTAGCTTCAAGTTCTAAGAAAGATGAAGAAGAACAATACTAGCC
AAAATTGTTGAGCTGCTGAAATATTCAGGAGATCAGTTGGAAAGAAAGCTGAAGAAGATAAGGCTTTGA
TGGGCACTTCCAGGATGGGCTGTCTACTCTGTTTTCAAGACCATCACAGACCAGTCCATATGGGTGT
GGACCCAGGGGAGAATCAGAGGTCAAAGCTCAGGGCTTTAAGGCTGCCCTTGTAAATAGAGTACAGGCC
AAGCTCACAGCTATTGACAACCACCCGATGAACAGGGTCTGGGCTTTGGCACCAAGTACCTGAAAGAGA
ACTTCTGCCATGGATCCAGCAGCACGGTGGATGGGAAAAAATACTTGGGATATCACATGAAGAAGTAGA
C

ACGCGTACGCGGCCGCTCGAGCAGAACTCATCTCAGAAGAGGATCTGGCAGCAAATGATATCCTGGATT
ACAAGGATGACGACGATAAGGTTTAA



[View online »](#)

Reconstitution Method:

1. Centrifuge at 5,000xg for 5min.
2. Carefully open the tube and add 100ul of sterile water to dissolve the DNA.
3. Close the tube and incubate for 10 minutes at room temperature.
4. Briefly vortex the tube and then do a quick spin (less than 5000xg) to concentrate the liquid at the bottom.
5. Store the suspended plasmid at -20°C. The DNA is stable for at least one year from date of shipping when stored at -20°C.

RefSeq: [NM_138723.2](#)

RefSeq Size: 1930 bp

RefSeq ORF: 984 bp

Locus ID: 79370

UniProt ID: [Q9BZR8](#)

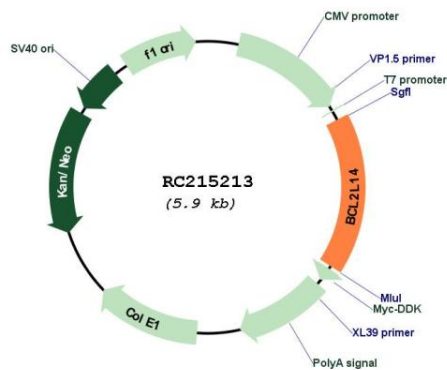
Cytogenetics: 12p13.2

Protein Families: Druggable Genome

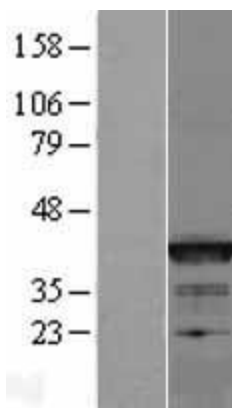
MW: 36.6 kDa

Gene Summary: The protein encoded by this gene belongs to the BCL2 protein family. BCL2 family members form hetero- or homodimers and act as anti- or pro-apoptotic regulators that are involved in a wide variety of cellular activities. Overexpression of this gene has been shown to induce apoptosis in cells. Three alternatively spliced transcript variants encoding two distinct isoforms have been reported for this gene. [provided by RefSeq, May 2009]

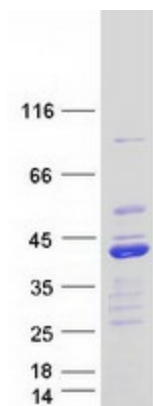
Product images:



Circular map for RC215213



Western blot validation of overexpression lysate (Cat# [LY408532]) using anti-DDK antibody (Cat# [TA50011-100]). Left: Cell lysates from untransfected HEK293T cells; Right: Cell lysates from HEK293T cells transfected with RC215213 using transfection reagent MegaTran 2.0 (Cat# [TT210002]).



Coomassie blue staining of purified BCL2L14 protein (Cat# [TP315213]). The protein was produced from HEK293T cells transfected with BCL2L14 cDNA clone (Cat# RC215213) using MegaTran 2.0 (Cat# [TT210002]).