

Product datasheet for RC215210

FTSJ1 (NM_012280) Human Tagged ORF Clone

Product data:

Product Type:	Expression Plasmids
Product Name:	FTSJ1 (NM_012280) Human Tagged ORF Clone
Tag:	Myc-DDK
Symbol:	FTSJ1
Synonyms:	CDLIV; JM23; MRX9; MRX44; SPB1; TRMT7
Mammalian Cell Selection:	Neomycin
Vector:	pCMV6-Entry (PS100001)
E. coli Selection:	Kanamycin (25 ug/mL)
ORF Nucleotide Sequence:	>RC215210 ORF sequence Red=Cloning site Blue=ORF Green=Tags(s)

TTTTGTAATACGACTCACTATAGGGCGGCCGGAATTCGTCGACTGGATCCGGTACCGAGGAGATCTGCC
GCC**CGATCGCC**

ATGGGACGGACGTCAAAGGACAAGCGGGATGTCTACTACCGCCTGGCCAAGGAGAATGGCTGGCGTGCTC
GCAGCGCCTTCAAAGTGTACAAGTGGATAAGGAATTCAACTCTTCAAGGCGTGACACGGGCAGTTGA
CCTGTGTGCAGCCCCAGGCAGCTGGAGCCAGGTGCTGAGCCAGAAGATCGGGGGCAAGGGTCCGGCCAC
GTGGTGGCTGTGGACCTGCAGGCTATGGCTCCACTACCAGGTGTGGTACAGATCCAGGGGACATCACCC
AGCTGTCCACTGCCAAGGAGATCATCCAGCACTTAAGGGCTGCCCTGCGGACCTAGTGGTGTGTGACGG
GGCTCCTGATGTAACCGGTCTCCATGATGTTGATGAGTATATGCAGGCCAGCTCCTCCTAGCTGCTCTG
AACATTGCTACACATGTCTGAAGCCAGGGGGTCTTTGTGGCCAAGATATTCCGAGGCCGGGATGTGA
CGCTCCTCTACAGCCAGCTGCAGGTCTTCTTCTCCAGCGTGTGTGTGCCAAGGCCAGGAGCAGCCGGAA
CTCTAGCATCGAGGCCTTCGCTGTCTGTGAGGGCTATGACCCCTCCGAGGGCTTCATCCCGGACCTGAGC
AAACCCCTGTGGACATTCTTACGACCCAGATTTCAACCAGCTGGATGGTCCCACCCGCATCATTGTGC
CTTTTGTGACCTGTGGGACCTGAGCTCCTATGATTCGGACCGCAGTTACCCACTGGACCTAGAGGGCGG
CTCAGAGTACAAGTACACTCCACCCACACAGCCCCCATCTCGCCACCATAACCAGGAGCCTGCACGTTG
AAGAGGAAGGGGACGTGGCCAAGGAGATCCGCCCCAGGACTGCCCATCAGCAGAGTGGACACGTTTC
CCAGCCCTGGCCGCCCTCAGTGCCACACCTGCTGGCCCTGAGATGGAAGACAATGAAATGAGTTG
TTCACCT

ACGCGTACGCGGCCGCTCGAGCAGAACTCATCTCAGAAGAGGATCTGGCAGCAAATGATATCCTGGATT
ACAAGGATGACGACGATAAGGTTTAA



[View online »](#)

Protein Sequence: >RC215210 protein sequence
Red=Cloning site Green=Tags(s)

MGRTSKDKRDVYRLAKENGWRARSFAKLLQLDKEFQLFQGVTRAVDLCAAPGSWSQVLSQKIGGQGS
 VVAVDLQAMAPLPGVVQIQGDITQLSTAKEIIQHFKGCPADLVVCDGAPDVTGLHDVDEYMQAQLLLAAL
 NIATHVLKPGGCFVAKIFRGRDVTLLYSQLQVFFSSVLCAKPRSSRNSSIEAFVACQGYDPPPEGFIPDLS
 KPLLDHSYDPDFNQLDGPTRIIVPFVTCGDLSSYSDRSYPLDLEGGSEYKYTPPTQPPISPPYQEA
 CTLKRRKQLAKEIRPQDCPISRVDTFPQPLAAPQCHTLLAPEMEDNEMSCSP

TRTRPLEQKLISEEDLAANDILDYKDDDDKV

Chromatograms: https://cdn.origene.com/chromatograms/mk6427_b10.zip

Restriction Sites: SgfI-MluI

Cloning Scheme:

Cloning sites used for ORF Shuttling:



* The last codon before the Stop codon of the ORF

ACCN: NM_012280

ORF Size: 987 bp

OTI Disclaimer: The molecular sequence of this clone aligns with the gene accession number as a point of reference only. However, individual transcript sequences of the same gene can differ through naturally occurring variations (e.g. polymorphisms), each with its own valid existence. This clone is substantially in agreement with the reference, but a complete review of all prevailing variants is recommended prior to use. [More info](#)

OTI Annotation: This clone was engineered to express the complete ORF with an expression tag. Expression varies depending on the nature of the gene.

Components: The ORF clone is ion-exchange column purified and shipped in a 2D barcoded Matrix tube containing 10ug of transfection-ready, dried plasmid DNA (reconstitute with 100 ul of water).

Reconstitution Method:

1. Centrifuge at 5,000xg for 5min.
2. Carefully open the tube and add 100ul of sterile water to dissolve the DNA.
3. Close the tube and incubate for 10 minutes at room temperature.
4. Briefly vortex the tube and then do a quick spin (less than 5000xg) to concentrate the liquid at the bottom.
5. Store the suspended plasmid at -20°C. The DNA is stable for at least one year from date of shipping when stored at -20°C.

RefSeq: [NM_012280.4](#)

RefSeq Size: 2091 bp

RefSeq ORF: 990 bp

Locus ID: 24140

UniProt ID: [Q9UET6](#)

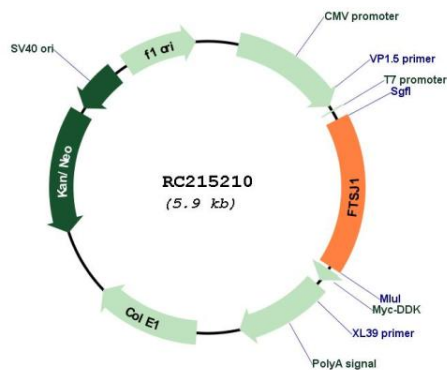
Cytogenetics: Xp11.23

Domains: Ftsj

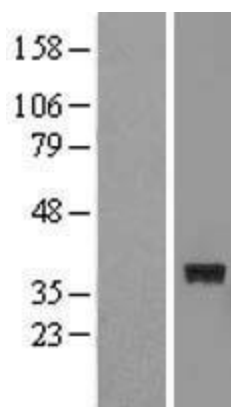
MW: 36.1 kDa

Gene Summary: This gene encodes a member of the methyltransferase superfamily. The encoded protein localizes to the nucleolus, binds to S-adenosylmethionine, and may be involved in the processing and modification of ribosomal RNA. Mutations in this gene are associated with cognitive disability. Alternative splicing results in multiple transcript variants. [provided by RefSeq, Aug 2013]

Product images:



Circular map for RC215210



Western blot validation of overexpression lysate (Cat# [LY415848]) using anti-DDK antibody (Cat# [TA50011-100]). Left: Cell lysates from untransfected HEK293T cells; Right: Cell lysates from HEK293T cells transfected with RC215210 using transfection reagent MegaTran 2.0 (Cat# [TT210002]).