

Product datasheet for RC215205

NALP1 (NLRP1) (NM_033007) Human Tagged ORF Clone

Product data:

Product Type:	Expression Plasmids
Product Name:	NALP1 (NLRP1) (NM_033007) Human Tagged ORF Clone
Tag:	Myc-DDK
Symbol:	NLRP1
Synonyms:	AIADK; CARD7; CILED; CLR17.1; DEFCAP; DEFCAP-L/S; JRRP; MSPC; NAC; NALP1; PP1044; SLEV1; VAMAS1
Vector:	pCMV6-Entry (PS100001)
E. coli Selection:	Kanamycin (25 ug/mL)
Cell Selection:	Neomycin
ORF Nucleotide Sequence:	>RC215205 representing NM_033007 Red=Cloning site Blue=ORF Green=Tags(s)

TTTTGTAATACGACTCACTATAGGGCGGCCGGAATTCGTCGACTGGATCCGGTACCGAGGAGATCTGCC
GCC**CGATCGCC**

ATGGCTGGCGGAGCCTGGGGCCGCTGGCCTGTTACTTGGAGTTCCTGAAGAAGGAGGAGCTGAAGGAGT
TCCAGTCTCTGCTCGCCAATAAAGCGCACTCCAGGAGCTCTTCGGGTGAGACACCCGCTCAGCCAGAGAA
GACGAGTGGCATGGAGTGGCCTCGTACCTGGTGGCTCAGTATGGGGAGCAGCGGGCCTGGGACCTAGCC
CTCCATACCTGGGAGCAGATGGGGTGGGCTACTGTGCGCCCAAGCCAGGAAGGGGCAGGCCACTCTC
CCTCATTCCCCTACAGCCCAAGTGAACCCACCTGGGGTCTCCAGCCAACCCACCTCCACCGCAGTGCT
AATGCCCTGGATCCATGAATTGCCGGCGGGTGCACCCAGGGCTCAGAGAGAAGGGTTTTGAGACAGCTG
CCTGACACATCTGGACGCCGCTGGAGAGAAATCTGCTCACTCCTCTACCAAGCTCTTCCAAGCTCCC
CAGACCATGAGTCTCAAGCCAGGAGTCAACCAACGCCCCACATCCACAGCAGTCTGGGGAGCTGGGG
ATCCCCACCTCAGCCAGCCTAGCACCCAGAGAGCAGGAGGCTCCTGGGACCCAATGGCCTCTGGATGAA
ACGTGAGGAATTTACTACACAGAAATCAGAGAAAGAGAGAGAGAAATCAGAGAAAGGCAGGCCCCAT
GGGCAGCGGTGGTAGGAACGCCCCACAGGCGCACACCAGCCTACAGCCCCACCACCACCATGGGAGCC
TTCTGTGAGAGAGAGCCTCTGTTCCACATGGCCCTGGAAAAATGAGGATTTTAACCAAAAATTCACACAG
CTGCTACTTCTACAAAGACCTCACCCAGAAGCAAGATCCCCTGGTCAAGAGAAGCTGGCCTGATTATG
TGGAGGAGAATCGAGGACATTTAATTGAGATCAGAGACTTATTTGGCCAGGCCTGGATACCCAAGAACC
TCGCATAGTCATACTGCAGGGGGCTGCTGGAATTGGGAAGTCAACACTGGCCAGGAGGTGAAGGAAGCC
TGGGGGAGAGGCCAGCTGTATGGGGACCCTTCCAGCATGTCTTCTACTTCAGCTGCAGAGAGCTGGCCC
AGTCCAAGGTGGTGAATCTCGCTGAGCTCATCGGAAAAGATGGGACAGCCACTCCGGCTCCCATTAGACA
GATCCTGTCTAGGCCAGAGCGGTGCTCTTCATCCTCGATGGTGTAGATGAGCCAGGATGGGTCTTGCA
GAGCCGAGTTCTGAGCTCTGTCTGCACTGGAGCCAGCCACAGCCGGCGGATGCACTGCTGGGCAGTTTGC
TGGGAAAACTATACTTCCGAGGCATCCTTCTGATCACGGCTCGGACCACAGCTCTGCAGAACCTCAT
TCCTTCTTGGAGCAGGCAGTGGGTAGAGGCTCTGGGTTCTCTGAGTCCAGCAGGAAGGAATATTT



[View online »](#)

TACAGATATTTACAGATGAAAGGCAAGCAATTAGAGCCTTTAGGTTGGTCAAATCAAACAAAGAGCTCT
GGGCCCTGTGTCTGTGCCCTGGGTGTCCTGGCTGGCCTGCACCTGCCTGATGCAGCAGATGAAGCGGAA
GGAAAACTCACACTGACTTCCAAGACCACCACAACCCCTGTCTACATTACCTTGCCAGGCTCTCCAA
GCTCAGCCATTGGGACCCAGCTCAGAGACCTCTGCTCTCTGGCTGCTGAGGGCATCTGGCAAAAAAGA
CCCTTTTCAGTCCAGATGACCTCAGGAAGCATGGGTTAGATGGGGCCATCATCTCCACCTTCTTGAAGAT
GGGTATTCTTCAAGACACCCCATCCCTCTGAGCTACAGCTTCATTACCTCTGTTTTCAAGAGTTCTTT
GCAGCAATGTCTATGTCTTGGAGGATGAGAAGGGGAGAGGTAACATTCTAATTGCATCATAGATTTGG
AAAAGACGCTAGAAGCATATGGAATACATGGCCTGTTTGGGCATCAACCACACGTTTCTATTGGCCT
GTTAAGTGATGAGGGGGAGAGAGATGGAGAACATCTTCACTGCCGGCTGTCTCAGGGGAGGAACCTG
ATGCAGTGGTCCCGTCCCTGCAGCTGCTGCTGCAGCCACACTCTCTGGAGTCCCTCCACTGCTTGTACG
AGACTCGGAACAAAACGTTCTGACACAAGTGATGGCCATTTGGAAGAAATGGGCATGTGTGTAGAAAC
AGACATGGAGCTTCTAGTGTGCACTTTCTGCATTAATTCAGCCGCCACGTGAAGAAGCTTCAGCTGATT
GAGGGCAGGCAGCACAGATCAACATGGAGCCCCACCATGGTAGTCTGTTGAGTGGTCCCAGTACAG
ATGCCTATTGGCAGATTCTTCTCCGTCTCAAGGTACCAGAAACCTGAAGGAGCTGGACCTAAGTGG
AAACTCGCTGAGCCACTCTGCAGTGAAGAGTCTTGTGAAGACCCTGAGACGCCCTCGCTGCCTCCTGGAG
ACCCTGCGGTTGGCTGGCTGTGGCCTCACAGCTGAGGACTGCAAGGACCTTGCCCTTTGGGCTGAGAGCCA
ACCAGACCCTGACCGAGCTGGACCTGAGCTTCAATGTGCTCACGGATGCTGGAGCCAAAACACCTTTGCCA
GAGACTGAGACAGCCGAGCTGCAAGCTACAGCGACTGCAGCTGGTGCAGCTGTGGCCTCACGTCTGACTGC
TGCCAGGACCTGGCCTCTGTGCTTAGTGCCAGCCCCAGCTGAAGGAGCTAGACCTGCAGCAGAACAACC
TGGATGACGTTGGCGTGCAGTCTCTGTGAGGGGCTCAGGCATCCTGCCTGCAAACTCATACGCTGGG
GAAACCAAGTGTGATGACCCCTACTGAGGGCCTGGATACGGGAGAGATGAGTAATAGCACATCCTCACTC
AAGCGGCAGAGACTCGGATCAGAGAGGGCGCTTCCATGTTGCTCAGGCTAATCTCAAACCTCCTGGACG
TGAGCAAGATCTTCCCAATTGCTGAGATTGCAGAGGAAAGCTCCCAGAGGTAGTACCGGTGAACTCTT
GTGCGTGCCTTCTCCTGCCTCTCAAGGGGACCTGCATACGAAGCCTTTGGGGACTGACGATGACTTCTGG
GGCCCCACGGGGCCTGTGGCTACTGAGGTAGTTGACAAAAGAAAAGAACTGTACCGAGTTCACTTCCCTG
TAGCTGGCTCCTACCGCTGGCCAAACACGGTCTCTGCTTTGTGATGAGAGAAGCGGTGACCGTTGAGAT
TGAATTCTGTGTGGGACCAAGTTCCTGGGTGAGATCAACCCACAGCACAGCTGGATGGTGGCAGGGCCT
CTGCTGGACATCAAGGCTGAGCCTGGAGCTGTGGAAGCTGTGCACCTCCCTCACTTTGTGGCTCTCCAAG
GGGGCCATGTGGACACATCCCTGTTCCAAATGGCCCACTTTAAAGAGGAGGGGATGCTCCTGGAGAAGCC
AGCCAGGGTGGAGCTGCATCACATAGTTCTGAAAACCCAGCTTCTCCCCCTTGGGAGTCTCCTGAAA
ATGATCCATAATGCCCTGCGCTTCAATCCCGTCACCTCTGTGGTGTGCTTTACCACCGCTCCATCCTG
AGGAAGTCACCTTCCACCTCTACCTGATCCAAGTACTGCTCCATTTCGGAAGGAACTGGAGCTCTGCTA
TCGAAGCCCTGGAGAAGACCAGCTGTTCTCGGAGTTCTACGTTGGCCACTTGGGATCAGGGATCAGGCTG
CAAGTGAAGACAAGAAAGATGAGACTCTGGTGTGGGAGGCTTGGTGAACCCAGGAGATCTCATGCCTG
CAACTACTCTGATCCCTCCAGCCCGCATAGCCGTACCTTACCTCTGGATGCCCCGAGTTGCTGCACCT
TGTGGACCAATCGAGAGCAGCTGATAGCCCGAGTGACATCGGTGGAGGTTGTCTTGGACAACTGCAT
GGACAGGTGCTGAGCCAGGAGCAGTACGAGAGGGTGTGGCTGAGAACACGAGGCCAGCCAGATGCGGA
AGCTGTTACGCTTGAAGCAGTCTGGGACCGGAAGTGCAAAGATGGACTTACCAAGCCCTGAAGGAGAC
CCATCTCACCTCATTATGGAACCTCTGGGAGAAGGGCAGCAAAAAGGGACTCTGCCACTCAGCAGC

ACGCGTACGCGGCCGCTCGAGCAGAACTCATCTCAGAAGAGGATCTGGCAGCAAATGATATCCTGGATT
ACAAGGATGACGACGATAAGGTTTAA

Protein Sequence: >RC215205 representing NM_033007
 Red=Cloning site Green=Tags(s)

MAGGAWGRLACYLEFLKKEELKEFQLLLANKAHSRSSSGETPAQPEKTSGMEVASYLVAQYGEQRAWDLA
 LHTWEQMGLRSLCAQAQEGAGHSPSPFPYSPSEPHLGSPSQPTSTAVLMPWIHELPAAGCTQGSERRVLRQL
 PDTSGRRWREISASLLYQALPSSPDHESPSQESPNAPTSTAVLGSWGSPPQPSLAPREQEAPGTQWPLDE
 TSGIYYTEIREREREKSEKGRPPWAAVVGTTPQAHSTLQPHHHPWEPVRESLCSSTWPWKNEFDNQKFTQ
 LLLLQRPHRSQDPLVKRSWPDYVEENRGHLIEIRDLFPGPLDTQEPRIVILQGAAGIGKSTLARQVKEA
 WGRGQLYGDRFQHVYFSCRELAQSKVVSALAELIGKDGATPAPIRQILSRPERLLFILDGVDEPGWVLQ
 EPSSELCLHWSQPQPADALLGSLGKTIPEASFLITARTTALQNLIPSLEQARWVEVLGFSESSRKEYF
 YRYFTDERQAIRAFRLVKSNEKELWALCLVPVSWLACTCLMQQMKRKEKLTLSKTTTTLCLHYLAALQ
 AQPLGPQLRDLCSLAAEGIWQKTLFSPDDL RKHGLDGAIISTFLKMGILQEHPISYSFIHLCFQEFF
 AAMSYVLEDEKGRGKHSNCIIDLEKTL EAYGIHGLFGASTTRFLLGLLSDEGEREMENIFHCRLSQGRNL
 MQWVPSLQLLLQPHSLESLHCLYETRNKTFLTQVMAHFEEGMVCVETDMELLVCTFCIKFSRHVKKLQLI
 EGRQHRSTWSPTMVVLRWVPVTDAYWQILFVSLKVTRNLKELDLSGNSLSHSAVKSCLKTLRRPRCLLE
 TLRLAGCGLTAEDCKDLAFGLRANQTLTELDLSFNVLTDAGAKHL CQRLRQPSCKLQRLQLVSCGLTSDC
 CQDLASVLSASPSLKELDLQNNLDDVGVRLCEGLRHPACKLIRLGKPSVMTPTTEGLDTGEMSNSTSSL
 KRQRLGSEARAASHVAQANLKLDDVSKIFPIAIEIAEESSPEVVPVELLCPVSPASQGD LHTKPLGTDDDFW
 GPTGPVATEVVDKEKNLYRVHFPVAGSYRWPNTGLCFVMREAVTVEIEFCVWDQFLGEINPQHSWMVAGP
 LLDIKAEPGAVEAVHLPHFVALQGGHVDTSLFQMAHFKEEGMLLEKPARVELHHIVLENPFSPLGVLLK
 MIHNALRFIPVTSVLLYHRVHPEEVTFHLYLIPSDCSIRKELELCYRSPGEDQLFSEFYVGHLSGIRL
 QVKDKKDETLVWEALVKPGDLPATTLIPPARIAVPSPLDAPQLLHFVDQYREQLIARVTSVEVVDKHL
 GQVLSQEYERVLAENTRPSQMRKLFSLSQSWDRKCKDGLYQALKETHPHLIMELWEKSGSKKGLLPLSS

TRTRPLEQKLISEEDLAANDILDYKDDDDKV

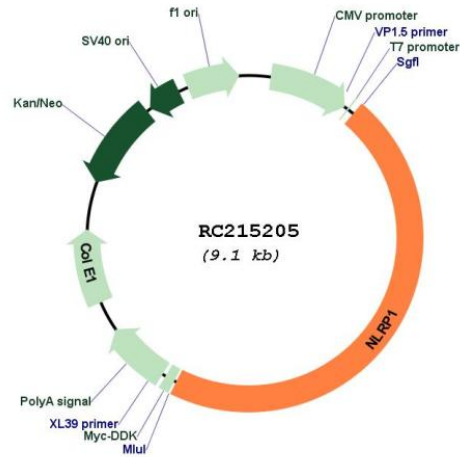
Restriction Sites:

SgfI-MluI

Cloning Scheme:



Plasmid Map:



ACCN: NM_033007

ORF Size: 4197 bp

OTI Disclaimer: The molecular sequence of this clone aligns with the gene accession number as a point of reference only. However, individual transcript sequences of the same gene can differ through naturally occurring variations (e.g. polymorphisms), each with its own valid existence. This clone is substantially in agreement with the reference, but a complete review of all prevailing variants is recommended prior to use. [More info](#)

OTI Annotation: This clone was engineered to express the complete ORF with an expression tag. Expression varies depending on the nature of the gene.

Components: The ORF clone is ion-exchange column purified and shipped in a 2D barcoded Matrix tube containing 10ug of transfection-ready, dried plasmid DNA (reconstitute with 100 ul of water).

Reconstitution Method:

1. Centrifuge at 5,000xg for 5min.
2. Carefully open the tube and add 100ul of sterile water to dissolve the DNA.
3. Close the tube and incubate for 10 minutes at room temperature.
4. Briefly vortex the tube and then do a quick spin (less than 5000xg) to concentrate the liquid at the bottom.
5. Store the suspended plasmid at -20°C. The DNA is stable for at least one year from date of shipping when stored at -20°C.

RefSeq: [NM_033007.4](#)

RefSeq Size: 5401 bp

RefSeq ORF: 4200 bp

Locus ID: 22861

UniProt ID: [Q9C000](#)

Cytogenetics: 17p13.2

Protein Families:	Druggable Genome
Protein Pathways:	NOD-like receptor signaling pathway
MW:	157.3 kDa
Gene Summary:	<p>This gene encodes a member of the Ced-4 family of apoptosis proteins. Ced-family members contain a caspase recruitment domain (CARD) and are known to be key mediators of programmed cell death. The encoded protein contains a distinct N-terminal pyrin-like motif, which is possibly involved in protein-protein interactions. This protein interacts strongly with caspase 2 and weakly with caspase 9. Overexpression of this gene was demonstrated to induce apoptosis in cells. Multiple alternatively spliced transcript variants encoding distinct isoforms have been found for this gene, but the biological validity of some variants has not been determined. [provided by RefSeq, Jul 2008]</p>