

Product datasheet for **RC215203**

ETS1 (NM_005238) Human Tagged ORF Clone

Product data:

Product Type:	Expression Plasmids
Product Name:	ETS1 (NM_005238) Human Tagged ORF Clone
Tag:	Myc-DDK
Symbol:	ETS1
Synonyms:	c-ets-1; ETS-1; EWSR2; p54
Mammalian Cell Selection:	Neomycin
Vector:	pCMV6-Entry (PS100001)
E. coli Selection:	Kanamycin (25 ug/mL)



[View online »](#)

ORF Nucleotide Sequence:

>RC215203 representing NM_005238
 Red=Cloning site Blue=ORF Green=Tags(s)

TTTTGTAATACGACTCACTATAGGGCGGCCGGAATTCGTCGACTGGATCCGGTACCGAGGAGATCTGCC
 GCC**GCGATCGCC**

ATGAAGGCGGCCGTCGATCTCAAGCCGACTCTCACCATCATCAAGACGGAAAAAGTCGATCTGGAGCTTT
 TCCCTCCCGGATATGGAATGTGCAGATGTCCCACTATTAAGTCCAAGCAGCAAAGAAATGATGTCTCA
 AGCATTAAAAGCTACTTTCAAGTGGTTTCACTAAAGAACAGCAACGACTGGGGATCCCAAAAGACCCCGG
 CAGTGGACAGAAACCCATGTTCCGGGACTGGGTGATGTGGGCTGTGAATGAATTCAGCCTGAAAGGTGTA
 ACTTCCAGAAGTTCTGTATGAATGGAGCAGCCCTCTGCGCCCTGGGTAAAGACTGCTTTCTCGAGCTGGC
 CCCAGACTTTGTTGGGACATCTTATGGGAACATCTAGAGATCCTGCAGAAAGAGGATGTGAAACCATAT
 CAAGTTAATGGAGTCAACCCAGCCTATCCAGAATCCCGCTATACCTCGGATTACTTCATTAGCTATGGTA
 TTGAGCATGCCAGTGTGTTCCACCATCGGAGTTCTCAGAGCCAGCTTCATCACAGAGTCTATCAGAC
 GCTCCATCCCATCAGCTCGGAAGAGCTCCTCTCCCTCAAGTATGAGAATGACTACCCCTCGGTCAATCTC
 CGAGACCTCTCCAGACAGACACCTTGCAGAATGACTACTTTGCTATCAACAAGAAGTCGTCACCCCGAG
 ACAACATGTGCATGGGGAGGACCAGTCTGGTAAACTCGGGGGCCAGGACTCTTTTGAAAGCATAGAGAG
 CTACGATAGTTGTGATCGCCTCACCCAGTCTGGAGCAGCCAGTCATCTTTCAACAGCCTGCAGCGTGT
 CCCTCCTATGACAGCTTCGACTCAGAGGACTATCCGGCTGCCCTGCCAACCAAGCCCAAGGGCACCT
 TCAAGGACTATGTGCGGGACCGTCTGACCTCAATAAGGACAAGCCTGTCATTCTGTGCTGCCCTAGC
 TGGCTACACAGGCAGTGGACCAATCCAGCTGTGGCAGTTTCTTCTGGAATTACTCACTGATAAATCTGT
 CAGTCTTTTATCAGCTGGACAGGAGATGGCTGGGAATTCAAACTTTCTGACCCAGATGAGGTGGCCAGGA
 GATGGGGAAGAGGAAAAACAACCTAAGATGAATTATGAGAACTGAGCCGTGGCCTACGCTACTATTA
 CGACAAAAACATCATCCACAAGACAGCGGGAAACGCTACGTGTACCGCTTTGTGTGTGACCTGCAGAGC
 CTGCTGGGGTACACCCCTGAGGAGCTGCACGCCATGCTGGACGTCAAGCCAGATGCCGACGAG

ACGCGTACGCGGCCGCTCGAGCAGAAACTCATCTCAGAAGAGGATCTGGCAGCAAATGATATCCTGGATT
 ACAAGGATGACGACGATAAGGTTTAA

Protein Sequence:

>RC215203 representing NM_005238
 Red=Cloning site Green=Tags(s)

MKAAVDLKPTLTIKTEKVDLELFPSPDMECADVPLLTPSSKEMMSQALKATFSGFTEQQRLGIPKDP
 QWTETHVRDWMWAVNEFSLKGVDFQKFCMNGAALCALGKDCFLELAPDFVGDILWEHLEILQKEDVKPY
 QVNGVNPAYPESRYTSDYFISYIEHAQCVPPEFSEPSFITESYQTLHPISSEELLSLKYENDYPSVIL
 RDPLQDTLQNDYFAIKQEVVTPDNMCMGRTSRGKLGQDSFESIESYDSCDRLTQSWSSQSSFNLSQRV
 PSYDSFSEDYPAALPNHKPKGTFKDYVRDRADLNKDKPVIIPAAALAGYTGSGPIQLWQFLELLTDKSC
 QSFISWTGDGWEFKLSDPDEVARRWGKRKNPKMNYEKL SRGLRYYYYDKNIIHKTAGKRYVYRFVCDLQS
 LLGYTPEELHAML DVKPDAD E

TRTRPLEQKLISEEDLAANDILDYKDDDDKV

Chromatograms:

https://cdn.origene.com/chromatograms/mk6119_g05.zip

Restriction Sites:

Sgfl-Mlul

Cloning Scheme:


ACCN: NM_005238

ORF Size: 1323 bp

OTI Disclaimer: Due to the inherent nature of this plasmid, standard methods to replicate additional amounts of DNA in E. coli are highly likely to result in mutations and/or rearrangements. Therefore, OriGene does not guarantee the capability to replicate this plasmid DNA. Additional amounts of DNA can be purchased from OriGene with batch-specific, full-sequence verification at a reduced cost. Please contact our customer care team at custsupport@origene.com or by calling 301.340.3188 option 3 for pricing and delivery.

The molecular sequence of this clone aligns with the gene accession number as a point of reference only. However, individual transcript sequences of the same gene can differ through naturally occurring variations (e.g. polymorphisms), each with its own valid existence. This clone is substantially in agreement with the reference, but a complete review of all prevailing variants is recommended prior to use. [More info](#)

OTI Annotation: This clone was engineered to express the complete ORF with an expression tag. Expression varies depending on the nature of the gene.

Components: The ORF clone is ion-exchange column purified and shipped in a 2D barcoded Matrix tube containing 10ug of transfection-ready, dried plasmid DNA (reconstitute with 100 ul of water).

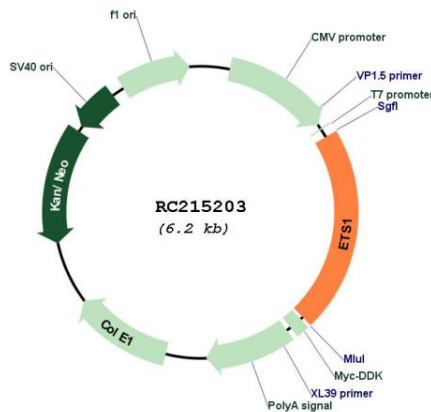
- Reconstitution Method:**
1. Centrifuge at 5,000xg for 5min.
 2. Carefully open the tube and add 100ul of sterile water to dissolve the DNA.
 3. Close the tube and incubate for 10 minutes at room temperature.
 4. Briefly vortex the tube and then do a quick spin (less than 5000xg) to concentrate the liquid at the bottom.
 5. Store the suspended plasmid at -20°C. The DNA is stable for at least one year from date of shipping when stored at -20°C.

RefSeq: [NM_005238.4](#)

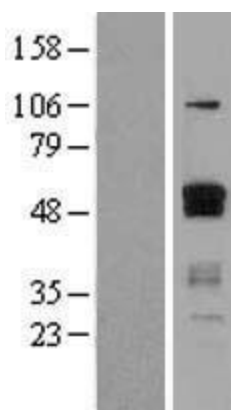
RefSeq Size: 5228 bp
RefSeq ORF: 1326 bp
Locus ID: 2113
UniProt ID: [P14921](#)
Cytogenetics: 11q24.3
Domains: ETS, SAM_PNT
Protein Families: Druggable Genome, Transcription Factors
Protein Pathways: Dorso-ventral axis formation, Pathways in cancer, Renal cell carcinoma
MW: 50.2 kDa

Gene Summary: This gene encodes a member of the ETS family of transcription factors, which are defined by the presence of a conserved ETS DNA-binding domain that recognizes the core consensus DNA sequence GGAA/T in target genes. These proteins function either as transcriptional activators or repressors of numerous genes, and are involved in stem cell development, cell senescence and death, and tumorigenesis. Alternatively spliced transcript variants encoding different isoforms have been described for this gene.[provided by RefSeq, Jul 2011]

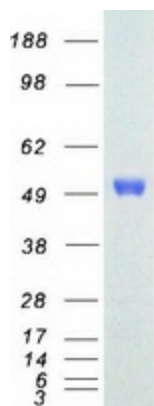
Product images:



Circular map for RC215203



Western blot validation of overexpression lysate (Cat# [LY401606]) using anti-DDK antibody (Cat# [TA50011-100]). Left: Cell lysates from untransfected HEK293T cells; Right: Cell lysates from HEK293T cells transfected with RC215203 using transfection reagent MegaTran 2.0 (Cat# [TT210002]).



Coomassie blue staining of purified ETS1 protein (Cat# [TP315203]). The protein was produced from HEK293T cells transfected with ETS1 cDNA clone (Cat# RC215203) using MegaTran 2.0 (Cat# [TT210002]).