

Product datasheet for **RC215197**

SPRR2A (NM_005988) Human Tagged ORF Clone

Product data:

Product Type: Expression Plasmids
Product Name: SPRR2A (NM_005988) Human Tagged ORF Clone
Tag: Myc-DDK
Symbol: SPRR2A
Mammalian Cell Selection: Neomycin
Vector: pCMV6-Entry (PS100001)
E. coli Selection: Kanamycin (25 ug/mL)
ORF Nucleotide Sequence: >RC215197 ORF sequence
Red=Cloning site Blue=ORF Green=Tags(s)

TTTTGTAATACGACTCACTATAGGGCGGCCGGAATTCGTCGACTGGATCCGGTACCGAGGAGATCTGCC
GCC**CGATCGCC**

ATGTCTTATCAACAGCAGCAGTGCAAGCAGCCCTGCCAGCCACCTCCTGTGTGCCCCACGCCAAAGTGCC
CAGAACCATGTCCACCCCGAAGTGCCCTGAGCCCTGCCACCACCAAAGTGCCACAGCCCTGCCACC
TCAGCAGTGCCAGCAGAAATATCCTCCTGTGACACCTTCCCCACCTGCCAGTCAAAGTATCCACCGAAG
AGCAAG

ACGCGTACGCGGCCGCTCGAGCAGAACTCATCTCAGAAGAGGATCTGGCAGCAAATGATATCCTGGATT
ACAAGGATGACGACGATAAGGTTTAA

Protein Sequence: >RC215197 protein sequence
Red=Cloning site Green=Tags(s)
MSYQQQCKQPCQPPVCPKPCPEPCPPKCPQPCPPQCCQKYPVTPSPPCQSKYPPK
SK

TRTRPLEQKLISEEDLAANDILDYKDDDDKV

Chromatograms: https://cdn.origene.com/chromatograms/mk6451_c10.zip

Restriction Sites: Sgfl-MluI



[View online »](#)

Cloning Scheme:


ACCN: NM_005988

ORF Size: 216 bp

OTI Disclaimer: The molecular sequence of this clone aligns with the gene accession number as a point of reference only. However, individual transcript sequences of the same gene can differ through naturally occurring variations (e.g. polymorphisms), each with its own valid existence. This clone is substantially in agreement with the reference, but a complete review of all prevailing variants is recommended prior to use. [More info](#)

OTI Annotation: This clone was engineered to express the complete ORF with an expression tag. Expression varies depending on the nature of the gene.

Components: The ORF clone is ion-exchange column purified and shipped in a 2D barcoded Matrix tube containing 10ug of transfection-ready, dried plasmid DNA (reconstitute with 100 ul of water).

Reconstitution Method:

1. Centrifuge at 5,000xg for 5min.
2. Carefully open the tube and add 100ul of sterile water to dissolve the DNA.
3. Close the tube and incubate for 10 minutes at room temperature.
4. Briefly vortex the tube and then do a quick spin (less than 5000xg) to concentrate the liquid at the bottom.
5. Store the suspended plasmid at -20°C. The DNA is stable for at least one year from date of shipping when stored at -20°C.

RefSeq: [NM_005988.3](#)

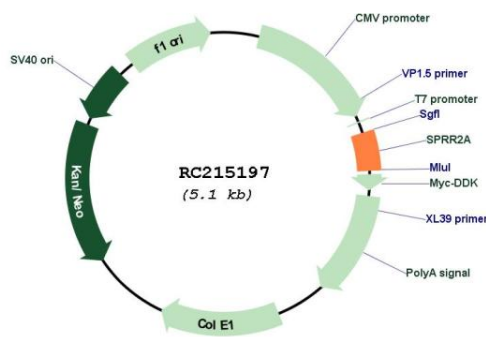
RefSeq Size: 692 bp

RefSeq ORF: 219 bp

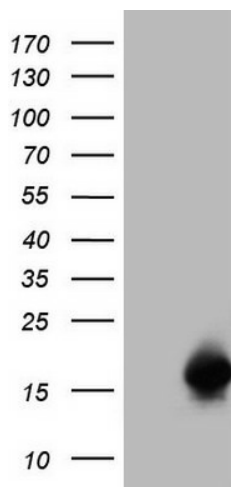
Locus ID: 6700
 UniProt ID: [P35326](#)
 Cytogenetics: 1q21.3
 MW: 8 kDa

Gene Summary: Cross-linked envelope protein of keratinocytes. It is a keratinocyte protein that first appears in the cell cytosol, but ultimately becomes cross-linked to membrane proteins by transglutaminase. All that results in the formation of an insoluble envelope beneath the plasma membrane.[UniProtKB/Swiss-Prot Function]

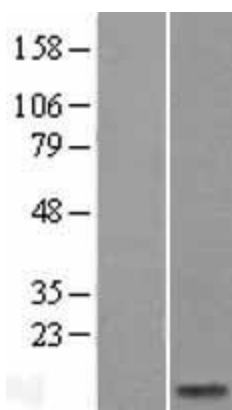
Product images:



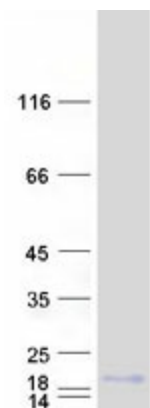
Circular map for RC215197



HEK293T cells were transfected with the pCMV6-ENTRY control (Cat# [PS100001], Left lane) or pCMV6-ENTRY SPRR2A (Cat# RC215197, Right lane) cDNA for 48 hrs and lysed. Equivalent amounts of cell lysates (5 ug per lane) were separated by SDS-PAGE and immunoblotted with anti-SPRR2A (Cat# [TA808452])(1:2000). Positive lysates [LY416935] (100ug) and [LC416935] (20ug) can be purchased separately from OriGene.



Western blot validation of overexpression lysate (Cat# [LY416935]) using anti-DDK antibody (Cat# [TA50011-100]). Left: Cell lysates from untransfected HEK293T cells; Right: Cell lysates from HEK293T cells transfected with RC215197 using transfection reagent MegaTran 2.0 (Cat# [TT210002]).



Coomassie blue staining of purified SPRR2A protein (Cat# [TP315197]). The protein was produced from HEK293T cells transfected with SPRR2A cDNA clone (Cat# RC215197) using MegaTran 2.0 (Cat# [TT210002]).