

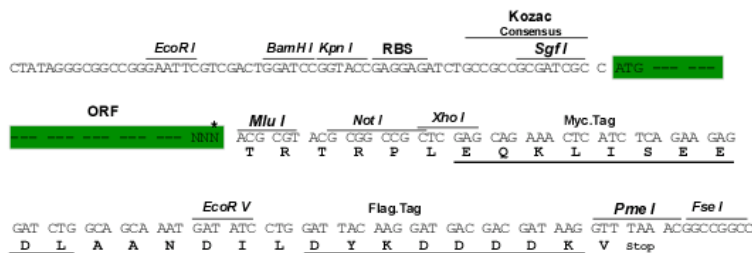
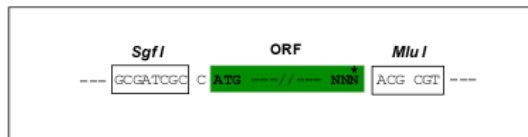
## Product datasheet for RC215188

### C14orf151 (INF2) (NM\_001031714) Human Tagged ORF Clone

#### Product data:

Product Type:	Expression Plasmids
Product Name:	C14orf151 (INF2) (NM_001031714) Human Tagged ORF Clone
Tag:	Myc-DDK
Symbol:	C14orf151
Synonyms:	C14orf151; C14orf173; CMTDIE; FSGS5; pp9484
Mammalian Cell Selection:	Neomycin
Vector:	pCMV6-Entry (PS100001)
E. coli Selection:	Kanamycin (25 ug/mL)
Restriction Sites:	SgfI-MluI
Cloning Scheme:	

Cloning sites used for ORF Shuttling:



\* The last codon before the Stop codon of the ORF

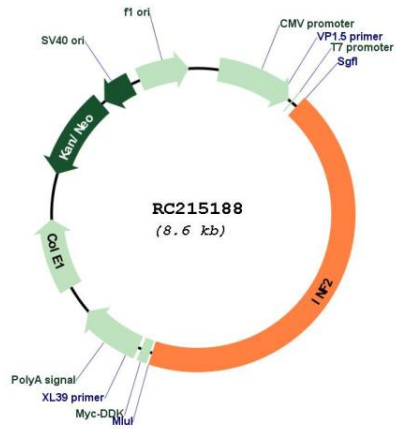
ACCN:	NM_001031714
ORF Size:	3720 bp



[View online >](#)

<b>OTI Disclaimer:</b>	The molecular sequence of this clone aligns with the gene accession number as a point of reference only. However, individual transcript sequences of the same gene can differ through naturally occurring variations (e.g. polymorphisms), each with its own valid existence. This clone is substantially in agreement with the reference, but a complete review of all prevailing variants is recommended prior to use. <a href="#">More info</a>
<b>OTI Annotation:</b>	This clone was engineered to express the complete ORF with an expression tag. Expression varies depending on the nature of the gene.
<b>Components:</b>	The ORF clone is ion-exchange column purified and shipped in a 2D barcoded Matrix tube containing 10ug of transfection-ready, dried plasmid DNA (reconstitute with 100 ul of water).
<b>Reconstitution Method:</b>	<ol style="list-style-type: none"><li>1. Centrifuge at 5,000xg for 5min.</li><li>2. Carefully open the tube and add 100ul of sterile water to dissolve the DNA.</li><li>3. Close the tube and incubate for 10 minutes at room temperature.</li><li>4. Briefly vortex the tube and then do a quick spin (less than 5000xg) to concentrate the liquid at the bottom.</li><li>5. Store the suspended plasmid at -20°C. The DNA is stable for at least one year from date of shipping when stored at -20°C.</li></ol>
<b>RefSeq:</b>	<a href="#">NM_001031714.4</a>
<b>RefSeq Size:</b>	4668 bp
<b>RefSeq ORF:</b>	3723 bp
<b>Locus ID:</b>	64423
<b>UniProt ID:</b>	<a href="#">Q27J81</a>
<b>Cytogenetics:</b>	14q32.33
<b>Protein Families:</b>	Druggable Genome
<b>MW:</b>	134.4 kDa
<b>Gene Summary:</b>	This gene represents a member of the formin family of proteins. It is considered a diaphanous formin due to the presence of a diaphanous inhibitory domain located at the N-terminus of the encoded protein. Studies of a similar mouse protein indicate that the protein encoded by this locus may function in polymerization and depolymerization of actin filaments. Mutations at this locus have been associated with focal segmental glomerulosclerosis 5.[provided by RefSeq, Aug 2010]

Product images:



Circular map for RC215188